



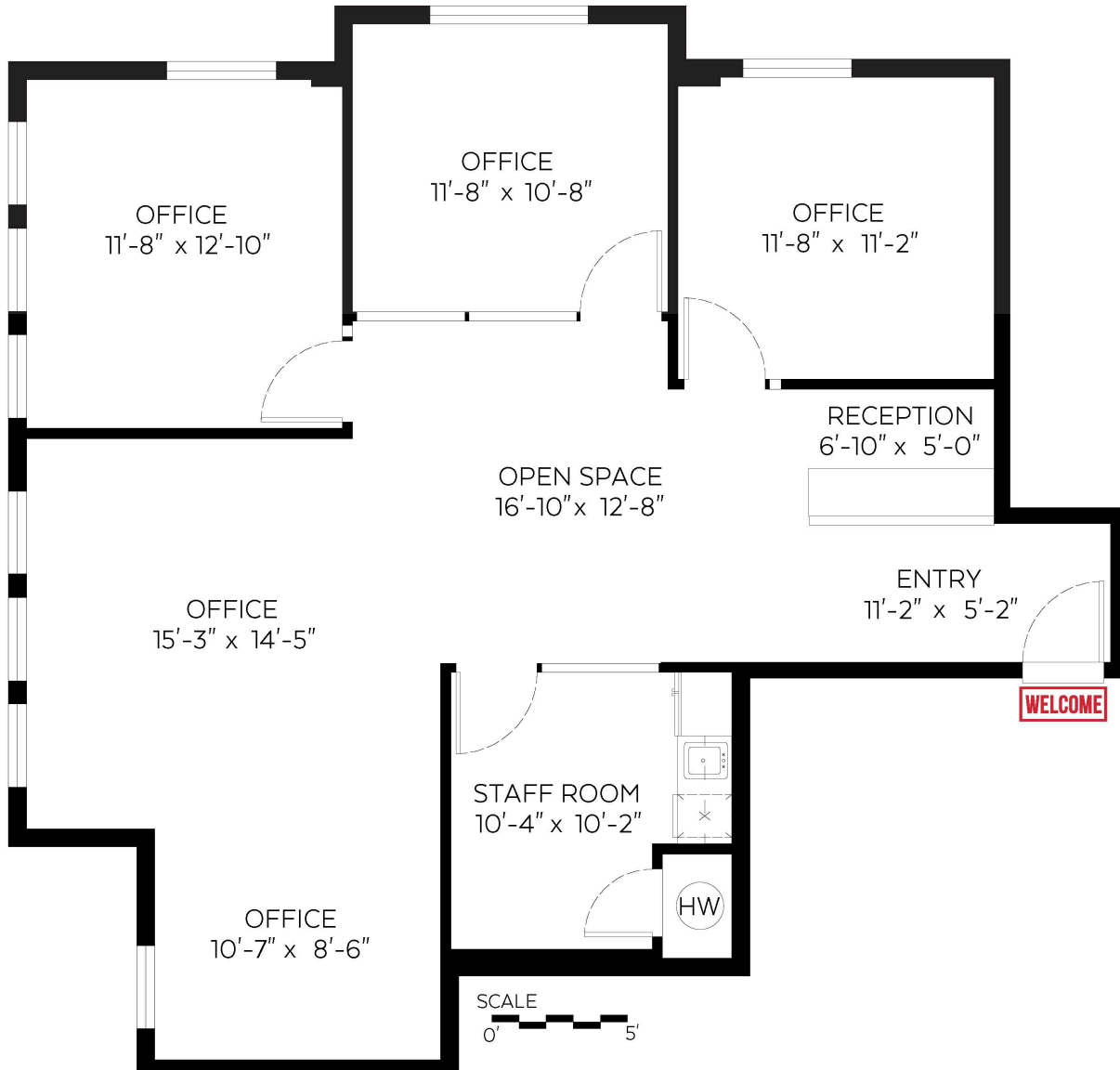
MICHAEL SHILTON, CCIM
 COMMERCIAL & RESIDENTIAL REAL ESTATE INVESTMENT ADVISOR
 Michael Shilton Personal Real Estate Corporation
 604.897.2363
 michael@michaelshilton.com
 www.MichaelShilton.com



#201 23189 Francis Avenue,
 Langley, B.C.

Occupant Area: 1,218 sq.ft.
 Ceiling Height: 8'-0"

Coastal Key
 Mortgage &
 Realty Group



Valid Until: January 30, 2026

The floor plan is not suitable for architectural/construction and is covered under E&O. © Excelsior Measuring Inc. 2025. All rights reserved for Excelsior Measuring Inc. Users shall not publish and distribute such material (in whole or in part) and/or incorporate it in other works in any form.

