

2300 Genoa Business Park Drive

Brighton, Michigan 48114

AVISON
YOUNG

Cross  Pointe
HEALTH CENTER

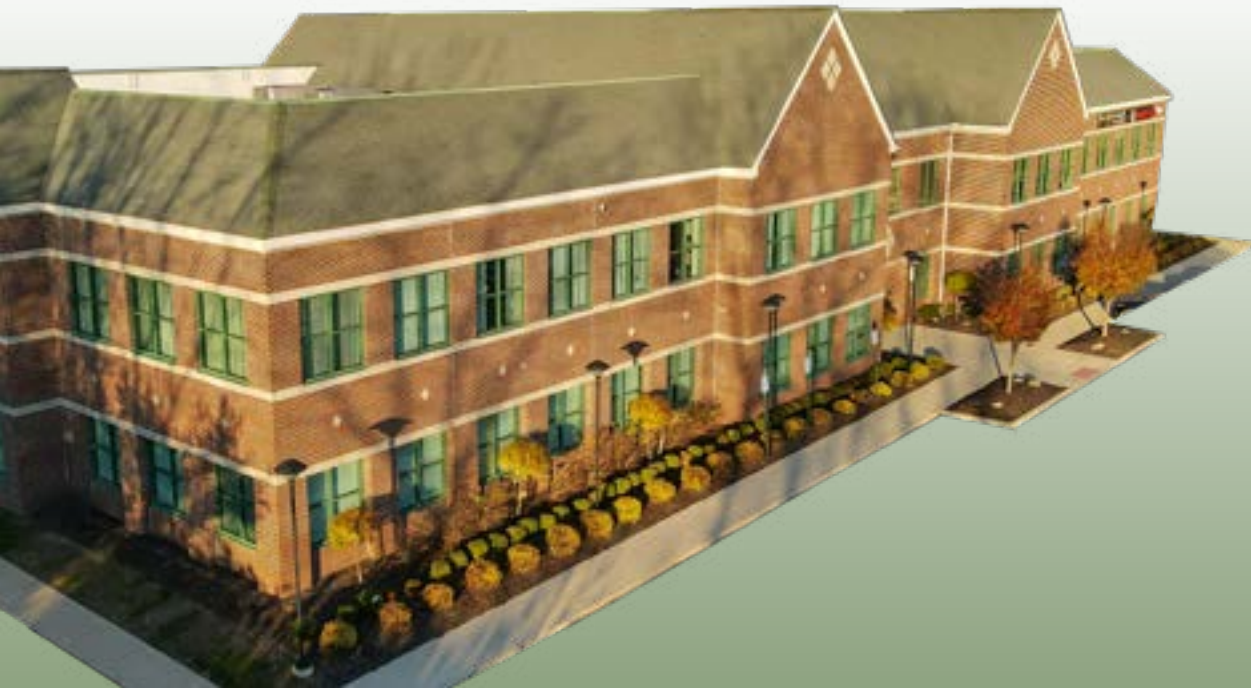
NOW LEASING

The CrossPointe advantage.

CrossPointe Health Center is recognized for its prime location; strategically positioned amongst a full-spectrum of medical practices, and adjacent to the new Trinity Health Hospital, creating a robust referring network of patients for your clients' needs.

AVAILABILITY SNAPSHOT

- ◆ Suite 160 | 1,093 sf
- ◆ Suite 190 | 2,980 sf
- ◆ Suite 230 | 988 sf
- ◆ Suite 250 | 1,725 sf (2nd generation dental suite)



Property Snapshot

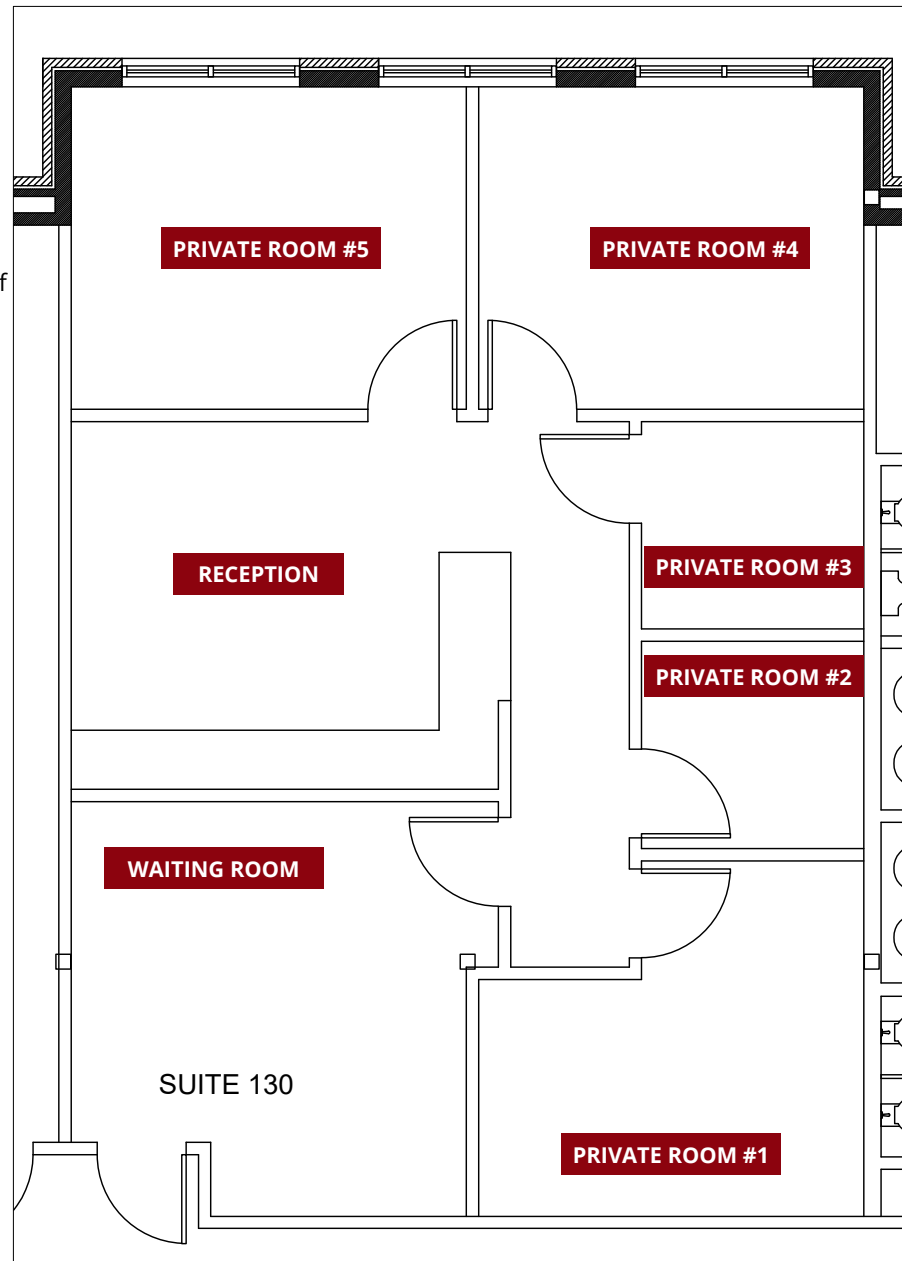
Distinguished 31,050 square foot medical office building with just a few suites remaining!

- Adjacent to Trinity Health Hospital's new medical campus and circuled by leading gynecology, oncology, orthopedic and cardiovascular practices
- Attractive newly renovated lobby with seating, tenant directory and bathrooms on each floor for convenience
- Rich referring tenant roster comprising of physical therapy, behavioral health, dentistry and urology
- Spacious parking lot consisting of 143 parking spaces
- Prominent location off Grand River Avenue, less than two-miles from I-96 and 2.5 miles from Downtown Brighton
- Professionally managed and maintained by ownership

SUITE 130

1,171 SF AVAILABLE

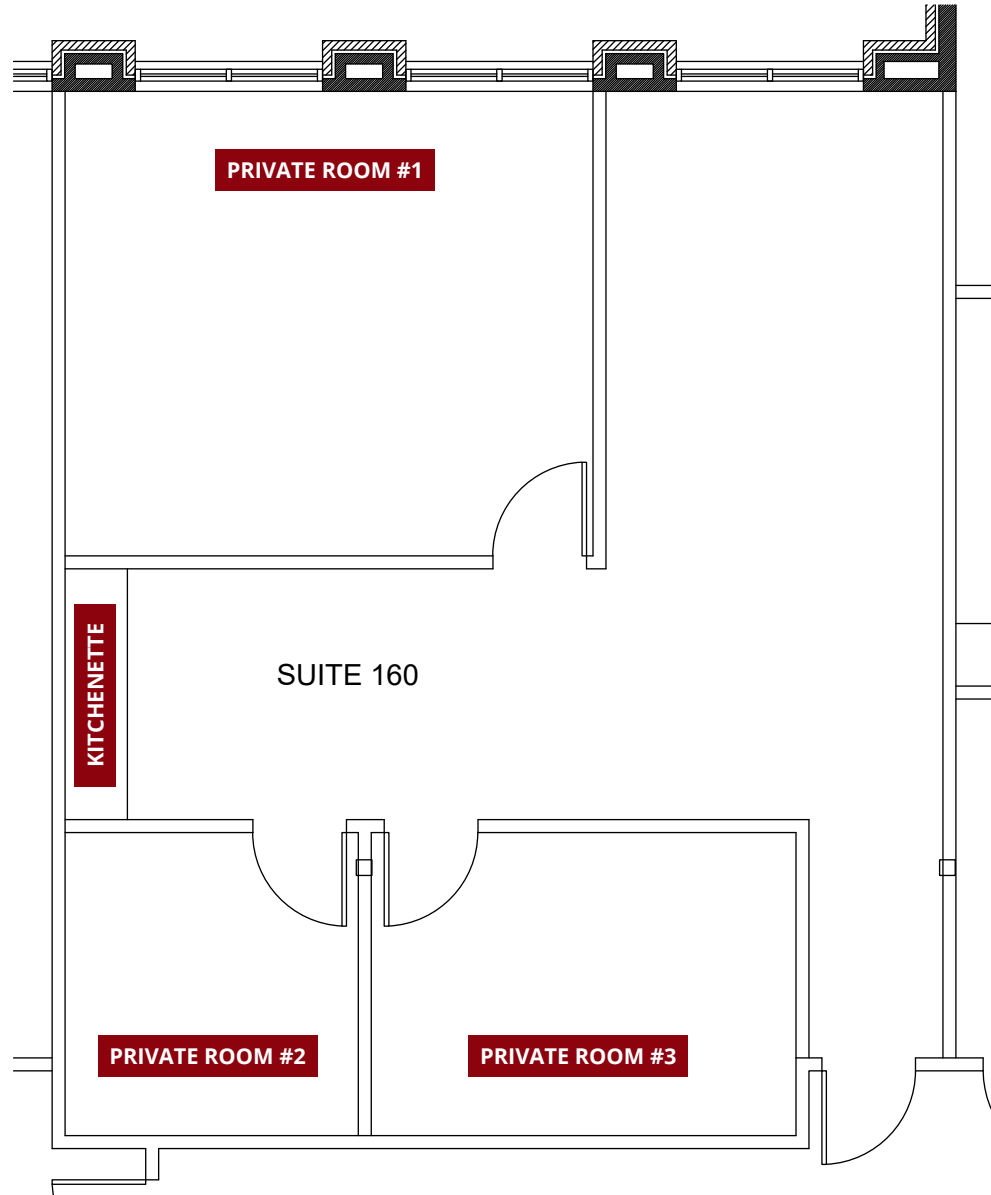
- ◆ First floor availability as of September 2024
- ◆ The suite offers a reception/waiting room and five private offices, two of which are window-lined
- ◆ Subject Suite is contiguous with Suite 160 for a total opportunity of 2,264sf



SUITE 160

1,093 SF AVAILABLE

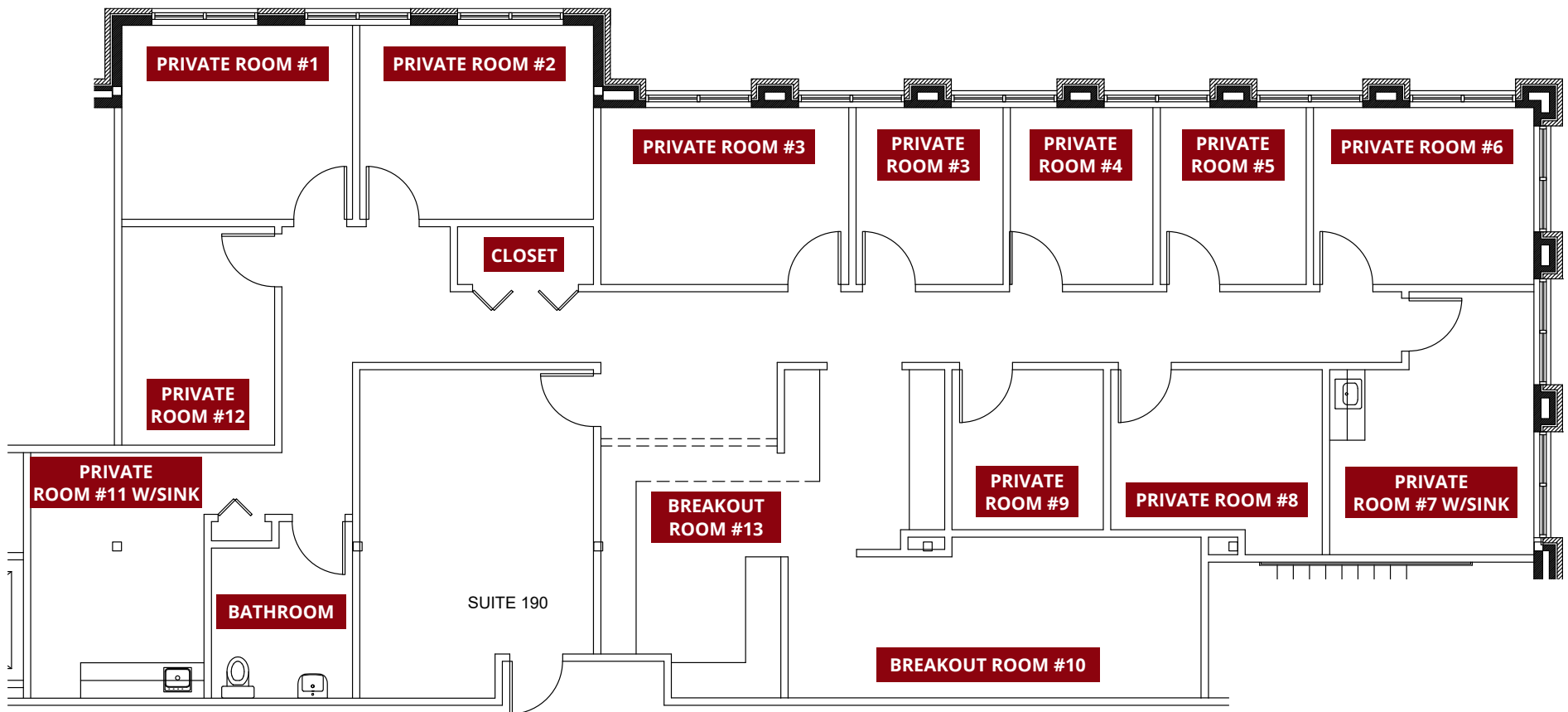
- ◆ First floor suite offers over-sized windows with southern exposure overlooking front entrance of the building



SUITE 190

2,980 SF AVAILABLE

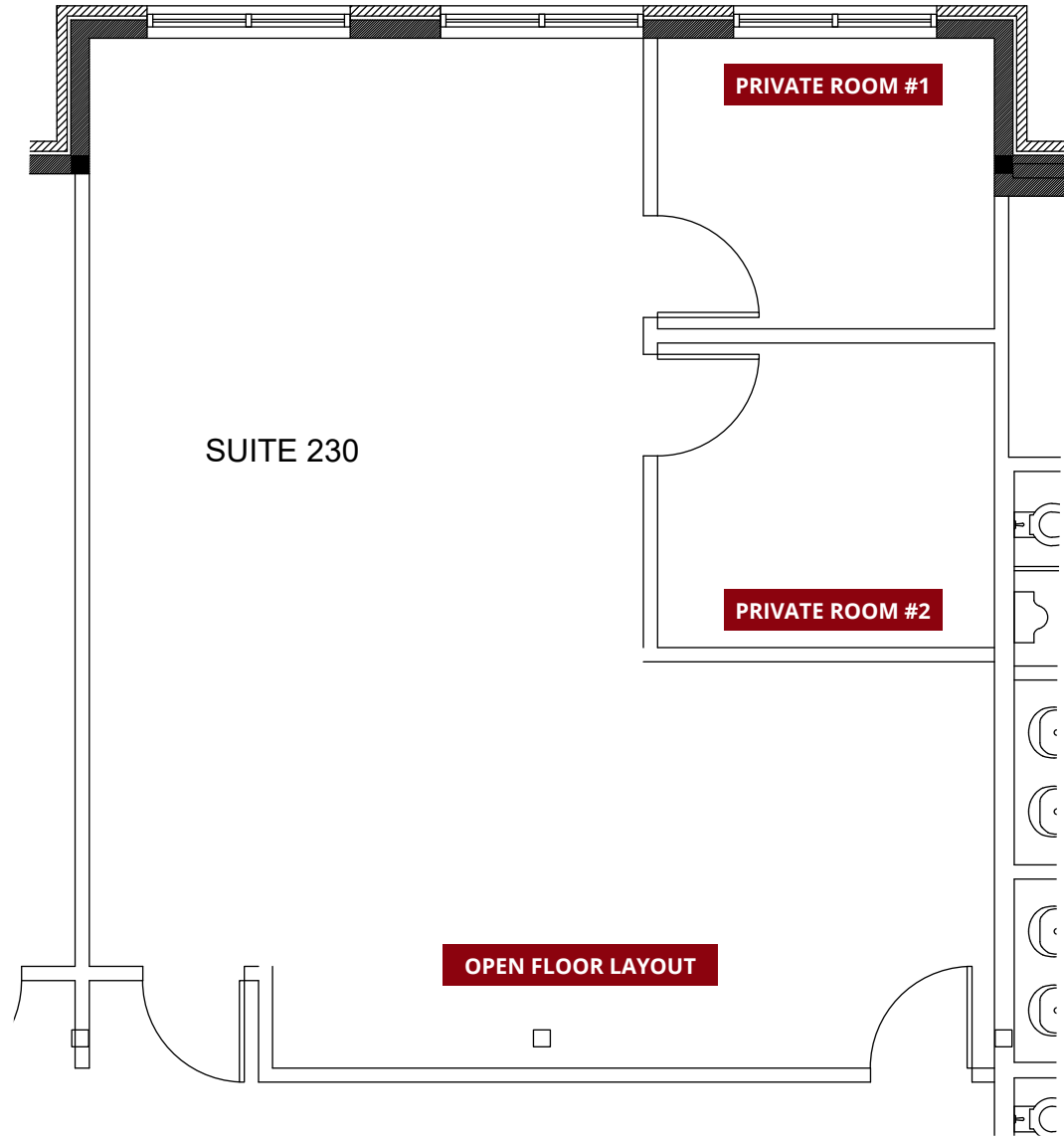
- ◆ First floor trophy suite
- ◆ The suite is equipped with a common area, private bathroom and 13 rooms



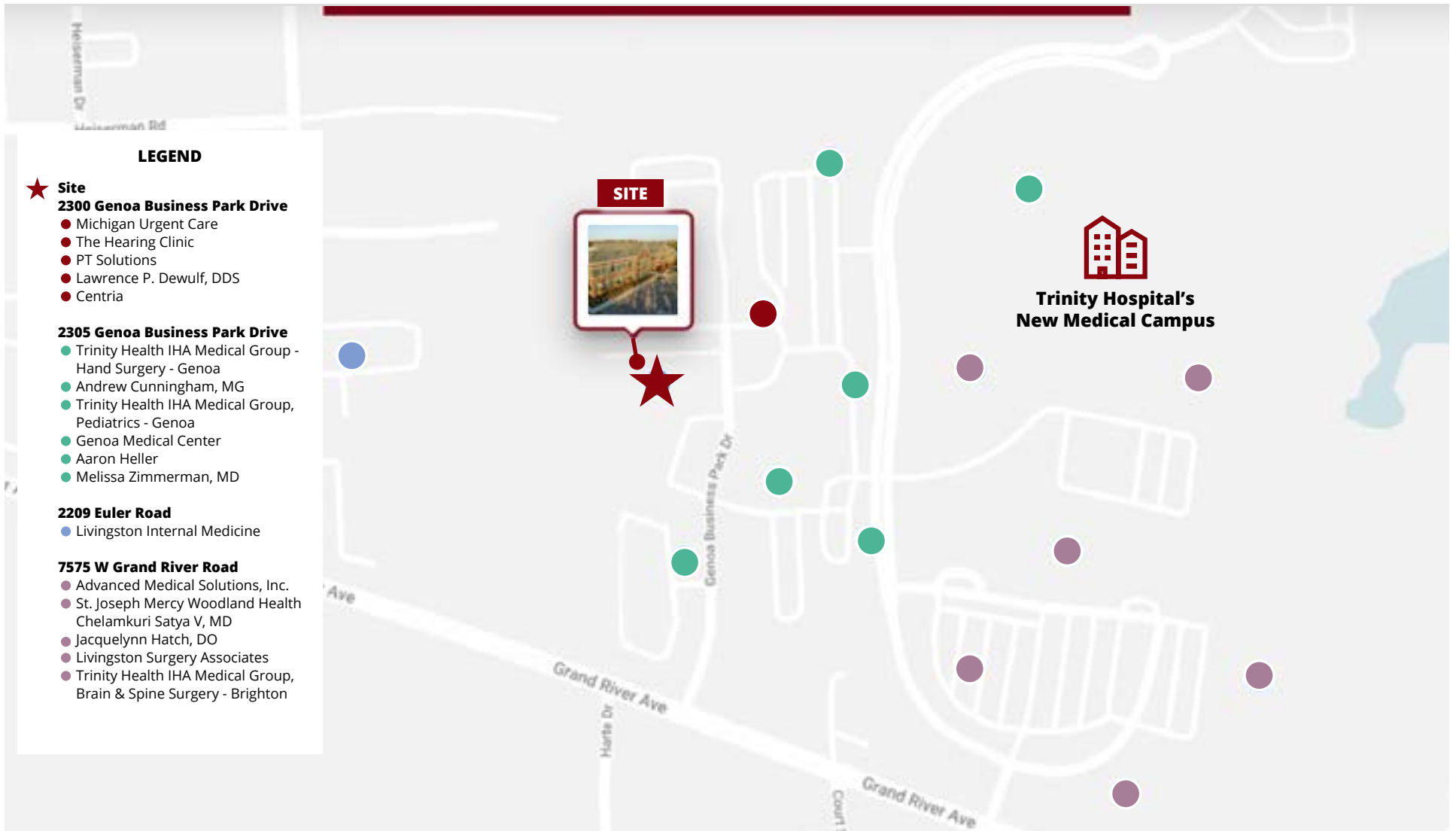
SUITE 230

988 SF AVAILABLE

- ◆ Second floor suite offers two offices with open floor plan
- ◆ Adjacent to second floor bathrooms with convenient access to the elevator
- ◆ Private room #1 is approximately 8'9" x 10'
- ◆ Private room #2 is approximately 8'11" x 10'



The right location for your practice.



Let's
talk.



AVISON YOUNG

Joanna K. Konopka

D: +1 313 209 4124

E: joanna.konopka@avisonyoung.com

Visit us online

[crosspointehealth.com](https://www.crosspointehealth.com)

© 2024. Avison Young. Information contained herein was obtained from sources deemed reliable and, while thought to be correct, have not been verified. Avison Young does not guarantee the accuracy or completeness of the information presented, nor assumes any responsibility or liability for any errors or omissions therein.