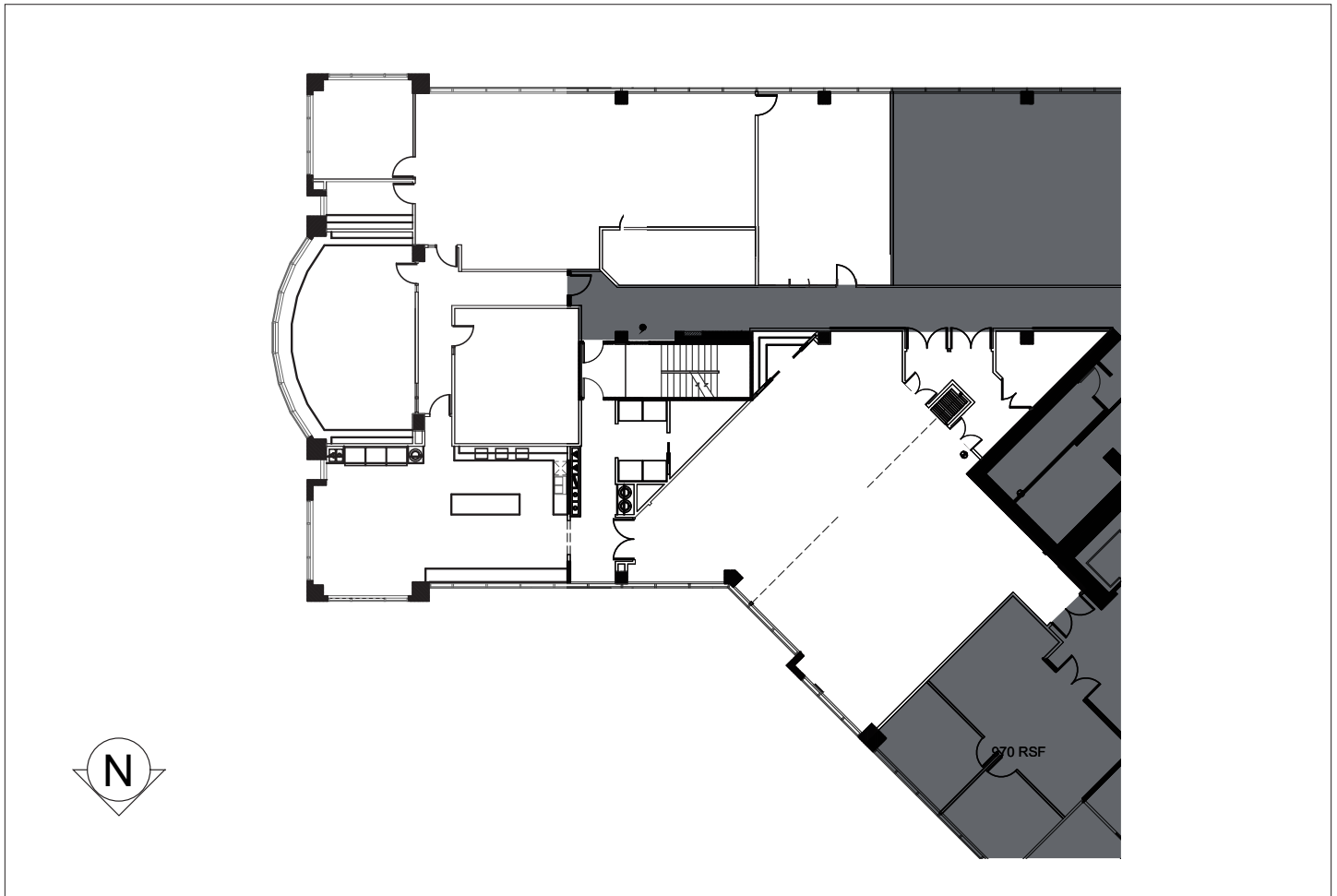


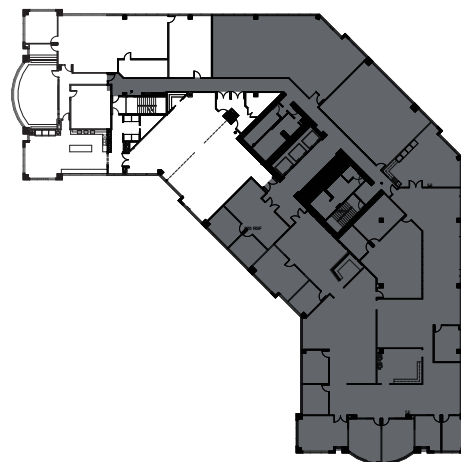
WSCC

Third Floor

4025 Delridge Way, Seattle WA



 **SUITE 315**
8,427 RSF



FOR MORE INFORMATION, CONTACT:

Mike George

+1 425 586 5618
mgeorge@nai-pp.com

Tony Rona

+1 425 586 5634
trona@nai-pp.com

NAI Puget Sound
Properties