

SUBLEASE
AVAILABLE

CLASS "A" OFFICE SPACE

± 2,051 SF

600 N ROBINSON AVE, SUITE 920
OKLAHOMA CITY, OK 73102

CITIZEN



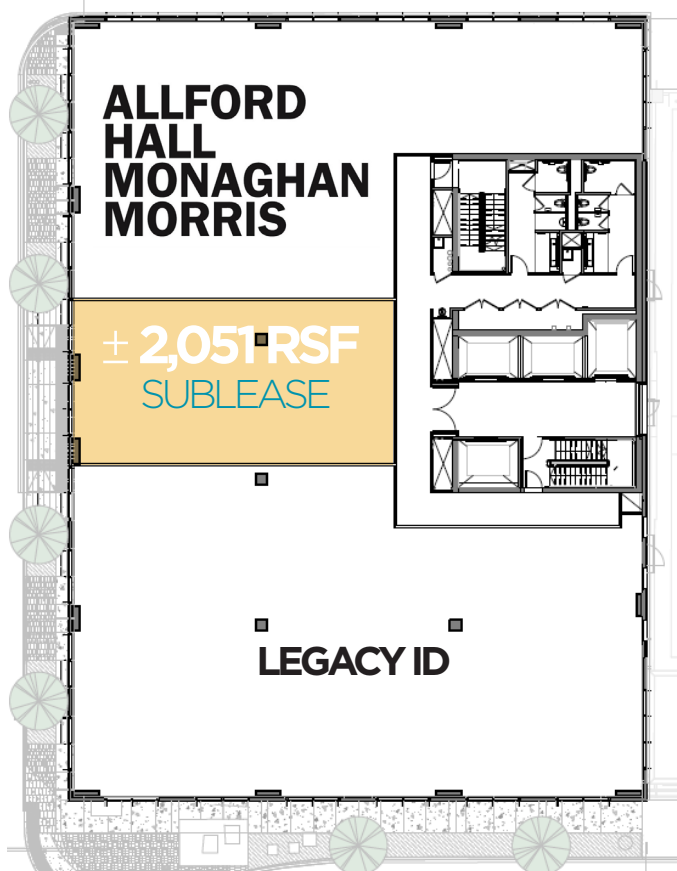
SUBLEASE AVAILABLE

600 N ROBINSON AVE, STE 920
OKLAHOMA CITY, OK 73102



COMMERCIAL
OKLAHOMA

LEVEL 09



PROPERTY HIGHLIGHTS

- **BUILDING SIZE:** ± 160,000 SF
- **SUBLEASE SPACE SUITE 920:** ± 2,051 SF
- SUBLEASE TERM:** Expires 3/31/35
- LEASE RATE:** \$30.00 FSG
\$100 - TI for remainder of term

Located in downtown Oklahoma City, the Citizen combines a modern social club with retail, office, executive workspace and an upscale hotel. The Citizen is a first-of-its-kind concept in Oklahoma City that blends work, leisure and community connection together. The 160,000-square-foot mid-rise building has expansive views of the city all around, including an overlook of the Oklahoma City National Memorial across the street.

CONTACT US

204 N Robinson Ave, Ste 2000 | Oklahoma City, OK 73102
+ 1 405 563 5000 | commercialoklahoma.com

FOR SUBLEASE

VIVIENNE VOGLER
+1 405 570 8595
vvogler@commercialoklahoma.com

MICAH SHERMAN, CCIM
+1 405 488 5548
msherman@commercialoklahoma.com

TRAVIS MASON
+1 405 297 9924
tmason@commercialoklahoma.com

©2026 Cushman & Wakefield | Commercial Oklahoma. Independently Owned and Operated / A Member of the Cushman & Wakefield Alliance
All rights reserved. The information contained in this communication is strictly confidential. This information has been obtained from sources believed to be reliable but has not been verified. No warranty or representation, express or implied, is made as to the condition of the property (or properties) referenced herein or as to the accuracy or completeness of the information contained herein, and same is submitted subject to errors, omissions, change of price, rental or other conditions, withdrawal without notice, and to any special listing conditions imposed by the property owner(s). Any projections, opinions or estimates are subject to uncertainty and do not signify current or future property performance.