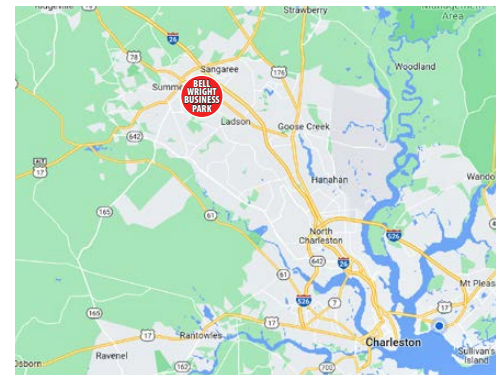




INDUSTRIAL SPACE FOR LEASE

217 CEMBER WAY
SUMMERVILLE, SC 29483



OFFERING SUMMARY

THE PROPERTY

Address	217 Cember Way Summerville, SC 29483
Zoning	Light Industrial
County	Berkeley County
Municipality	North Charleston
Lease Type	NNN
Available SF	Unit E - 2,879 SF

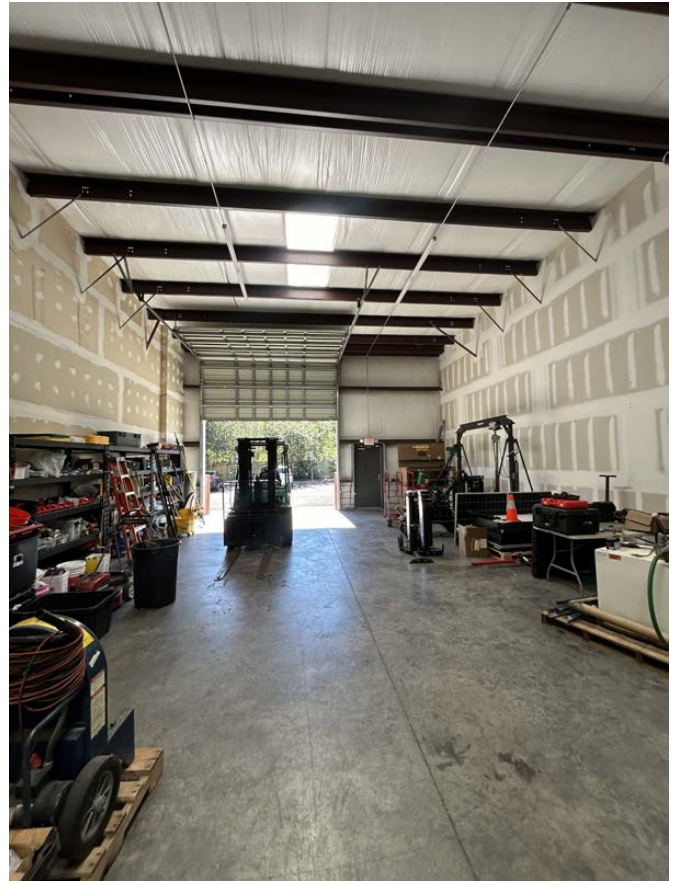
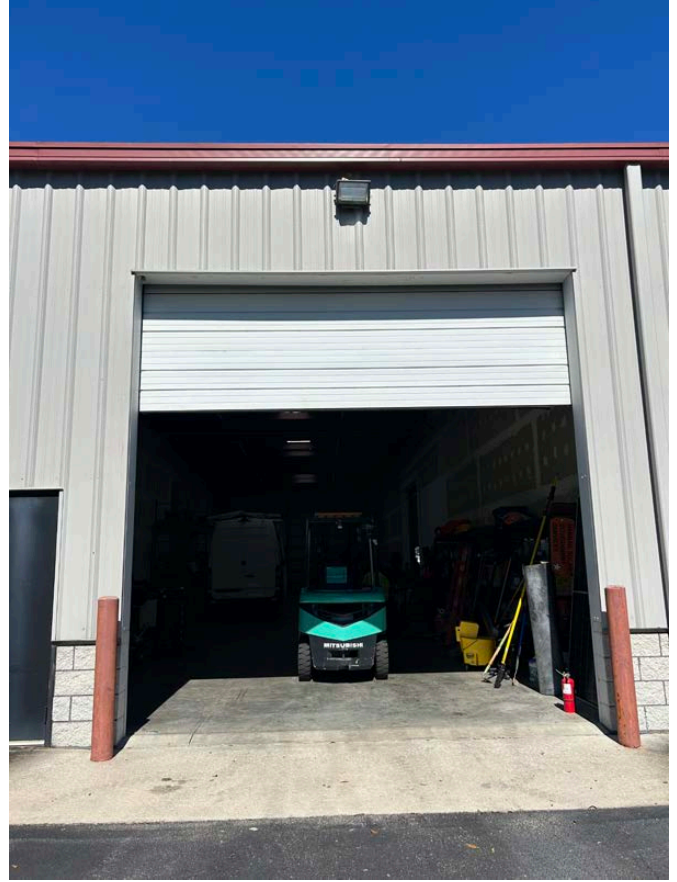
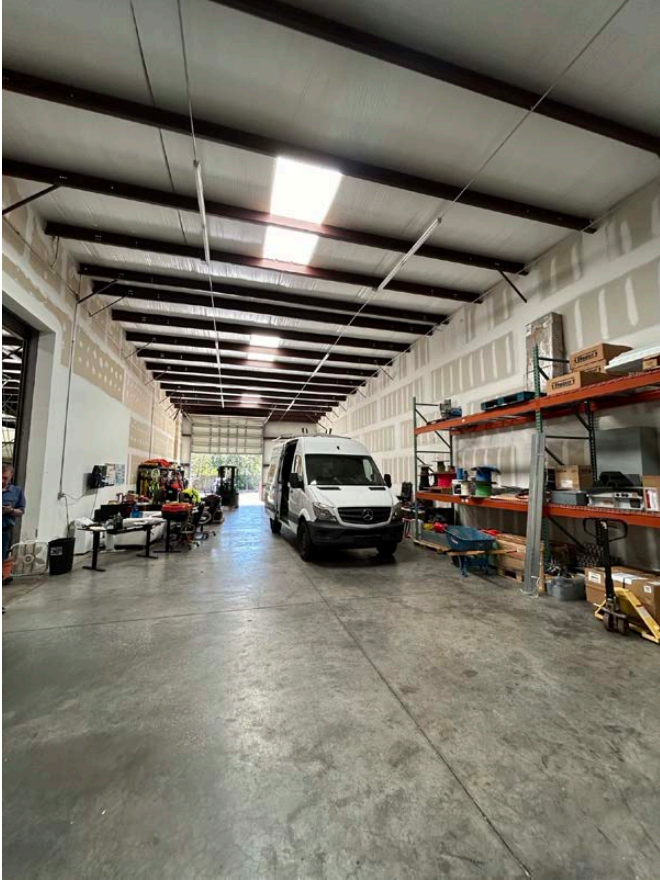
Bell Wright Business Park is located just off of Highway 78 in Summerville, 4 miles South of Exit 199 on I-26. The industrial park is in close proximity to I-26 connecting it to The Charleston Port Terminals, The Charleston International Airport and local manufacturers, Mercedes, Boeing, Volvo and Bosch.

Unit features 18' clear height and two 14' x 14' drive-in doors on opposite sides of the building for convenient drive-through access. Space available 1/1/2025.

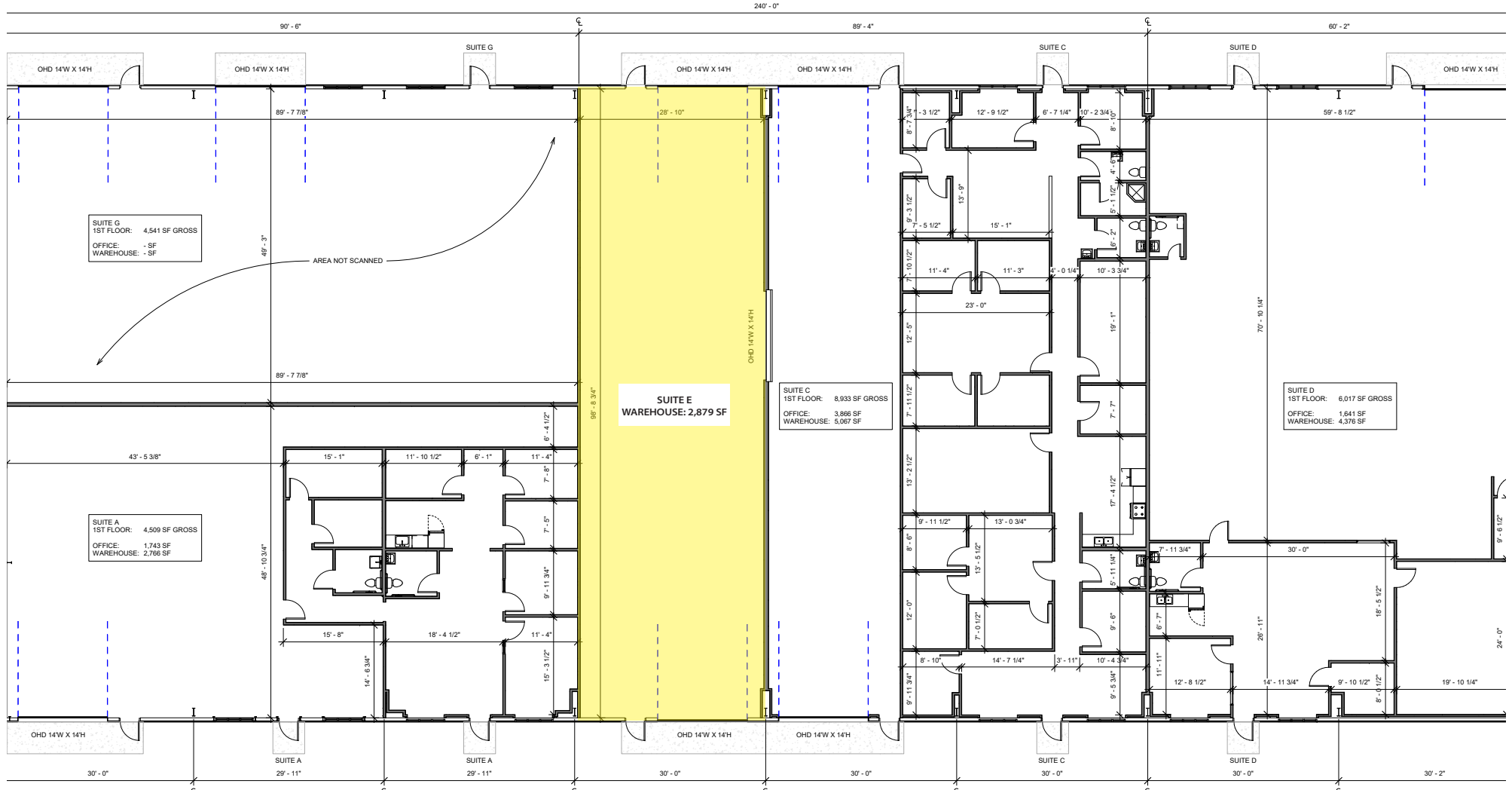
The buildings are surrounded by established businesses and offer excellent street front visibility within the industrial park.

Additional laydown yard available for lease.

Grace Moring, Leasing
843.518.6808
gmoring@wrsrealty.com



217 CEMBER WAY - UNIT E



The information contained herein was obtained from sources believed reliable, however, WRS Inc. makes no guarantees, warranties, or representations as to the completeness or accuracy thereof. The presentation of this property is submitted subject to errors, omissions, change of tenants or conditions prior to sale or lease, or withdrawal without notice. WRS Inc. | 410 Mill Street, Bldg. 1, Suite 200 | Mount Pleasant, SC 29464 | main 843.654.7888 | fax 843.654.7889