

Office For Lease

70509

Professional Cir
SUITE 201
RENO, NV 89521



CORFAC
INTERNATIONAL

TOM FENNELL, SIOR, CCIM

PRINCIPAL
775.850.3117 **OFFICE**
tfennell@dicksoncg.com
B.1001434

PATRICK RIGGS

VICE PRESIDENT, OFFICE
775.220.4957 **CELL**
priggs@dicksoncg.com
S.180878

10509 Professional Cir

SUITE 201
RENO, NV 89521



SUITE 201

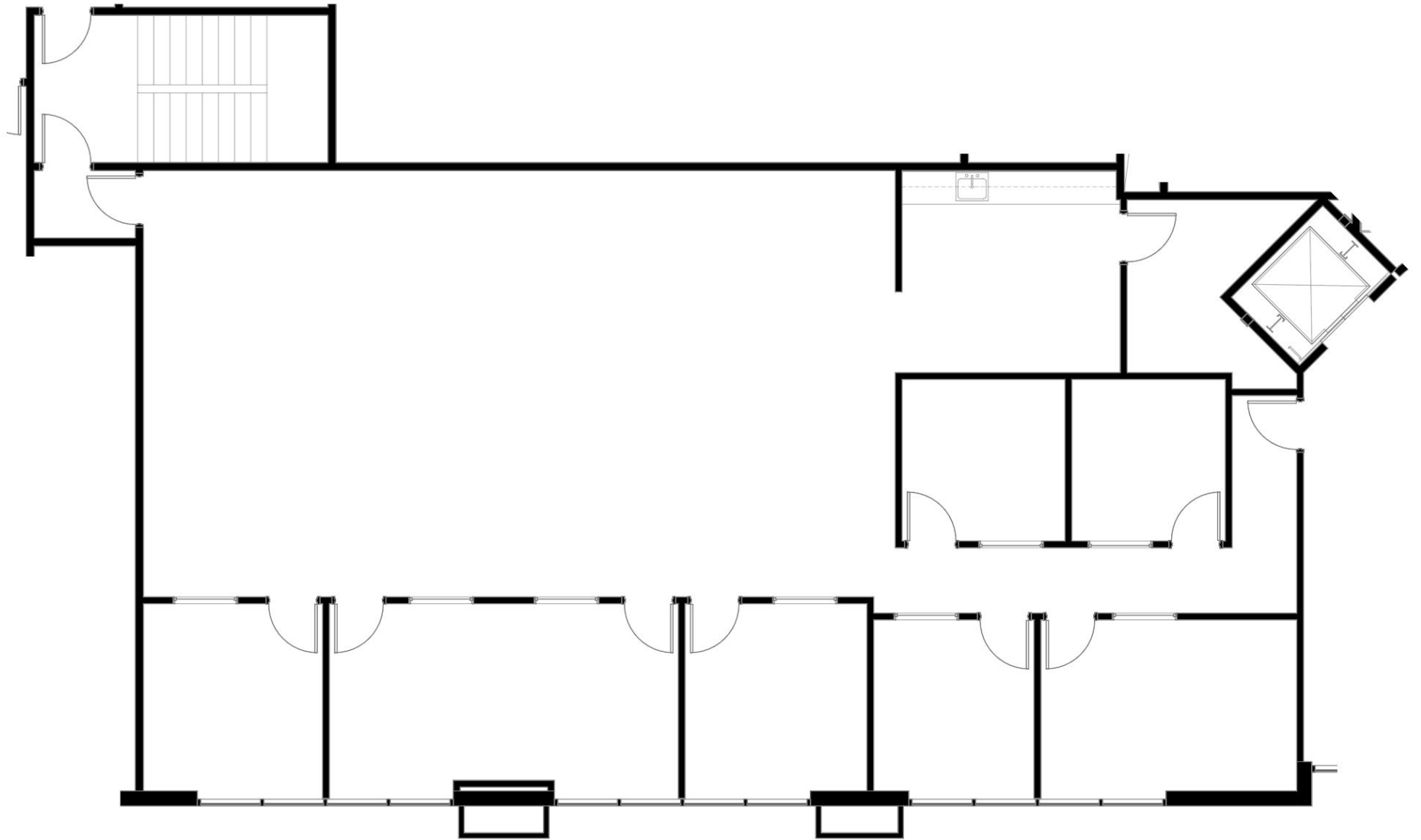
3,289
Square Feet

LEASE RATE / PSF | Negotiable

LEASE TYPE | Full Service

ZONING | PD
PLANNED DEVELOPMENT

SUITE 201 FLOOR PLAN



PARCEL MAP



Professional Cir

3 miles
59,909

5 miles
106,941

10509
PROFESSIONAL CIR
SUITE 201

Location Highlights

- Located within the Northern Nevada Corporate Center, the property is surrounded by a diverse mix of corporate, medical, and retail businesses.
- Offers convenient access to S. Meadows Pkwy and Double R Blvd, with nearby on/off ramps for Interstate 395.
- Close to South Meadows Promenade and neighboring retail centers, providing a variety of restaurants and amenities.
- Ample on-site parking ensures added convenience.

N

AREA MAP

SOUTH MEADOWS PROMENADE



CHASE Marshalls

Renown
HEALTH



10509
PROFESSIONAL CIR

PROFESSIONAL CIRCLE

DOUBLE R BLVD

STAYBRIDGE
SUITES



**YOUR
COMPETITIVE
ADVANTAGE**

NORTHERN NEVADA A SMART CHOICE FOR GROWTH

**HOME TO
INDUSTRY
GIANTS**

Ranked in TOP 10 states for best business tax climate and business incentives.



19K
UNDERGRADUATE
STUDENTS

23K
TOTAL
STUDENTS

4K
GRADUATE
STUDENTS

RI - University for Research by Carnegie Classifications



20 MINUTES
TAHOE RENO
INDUST. CENTER



"Super-Loop"
Fiber Network
IN PROGRESS



America's
DATA & TECH
Growth Frontier



22 MINUTES
Commute Time



3.5 HOURS
TO BAY AREA



2 HOURS
TO SACRAMENTO



NEVADA LITHIUM LOOP
Closed-loop system for lithium extraction, processing, and battery material recycling to support sustainable domestic EV supply chains.



WORKFORCE DEVELOPMENT

- Lowest labor costs in the Western U.S.
- 35K+ students at UNR & TMCC
- 10-year surge in manufacturing jobs
- MSA population growing 1.4% annually

Nevada is the 6th fastest-growing state in the nation, according to the latest *U.S. Census* data.

– U.S. Census Bureau (2025)

Recognized by *US News* for being the No. 7 across the nation for Business Environment.

– US News (2024)



Business Assistance Programs



Sales, Use & Modified Business Tax Abatements



Incentives for Equipment, Property & Recycling



Specialized Programs for Data Centers and Aviation

Opportunity Zones

Northern Nevada offers multiple federally designated Opportunity Zones, supporting long-term investment and development.

Qualified Opportunity Zone investments offer:



Deferred capital gains



Step-up in basis



Permanent exclusion of qualifying gains

Nevada Tax Climate

Nevada's tax structure is designed for business success:

NO

Corporate or Personal Income Tax
Inventory or Franchise Tax
Capital Gains or Inheritance Tax

One of the most competitive tax climates in the U.S., ranked among the best for business.



NORTHERN NEVADA TOP COMPANIES

5.4M SF
Tesla Gigafactory

1.3M SF
7.2M SF Planned
Switch Campus

TAX COMPARISONS	NV	CALIFORNIA	ARIZONA	UTAH	IDAHO	OREGON	WASHINGTON
state corporate income tax	NO	8.84%	4.9%	4.85%	6.5%	6.6%	NO
individual income tax	NO	<13.3%	<2.5%	4.55%	5.695%	<9.9%	NO
payroll tax	>1.17%	>1.5%	NO	NO	NO	>.9%	.92%
capital gains tax	NO	<13.3%	<2.5%	4.55%	5.695%	<9.9%	7-9.9%





TOM FENNELL, SIOR, CCIM

PRINCIPAL
775.850.3117 **OFFICE**
tfennell@dicksoncg.com
B.1001434

PATRICK RIGGS

VICE PRESIDENT, OFFICE
775.220.4957 **CELL**
priggs@dicksoncg.com
S.180878



**While obtained from sources deemed reliable, broker does not guarantee information and no warranty or representation, express or implied, is made as to the accuracy of the information contained herein, and the same is submitted subject to errors, omissions, change of price, rental or other conditions, prior sale, lease or financing, or withdrawal without notice. You and your advisors should conduct a careful, independent investigation of the property to determine to your satisfaction the suitability of the property for your needs.*