



BYRD
REAL ESTATE
GROUP



FOR LEASE

Fantastic Location on
Argonne-Mullan
Corridor

Former Dental Suite
\$4,600 mo

modified gross

Great Spa/Salon or
Clinic location

**930 N MULLAN
SPOKANE VALLEY WA**

Parcel # 45172.1221

+/- 2,827 SF

CONTACT

US NOW



Doug Byrd 509.216.6575
Sharon Reynolds 509.326.8080



Doug@ByrdRealEstateGroup.com
Sharon@ByrdRealEstateGroup.com



1912 N Division, Ste 201
Spokane WA 99207

- 5 OPERATORIES
- MONUMENT SIGNAGE
- EV CHARGING STATIONS
- AMAZING NATURAL LIGHT
- ADA ACCESSIBLE
- EASY ACCESS TO I-90
- PLENTIFUL PARKING
- AVAILABLE 9.1.2025

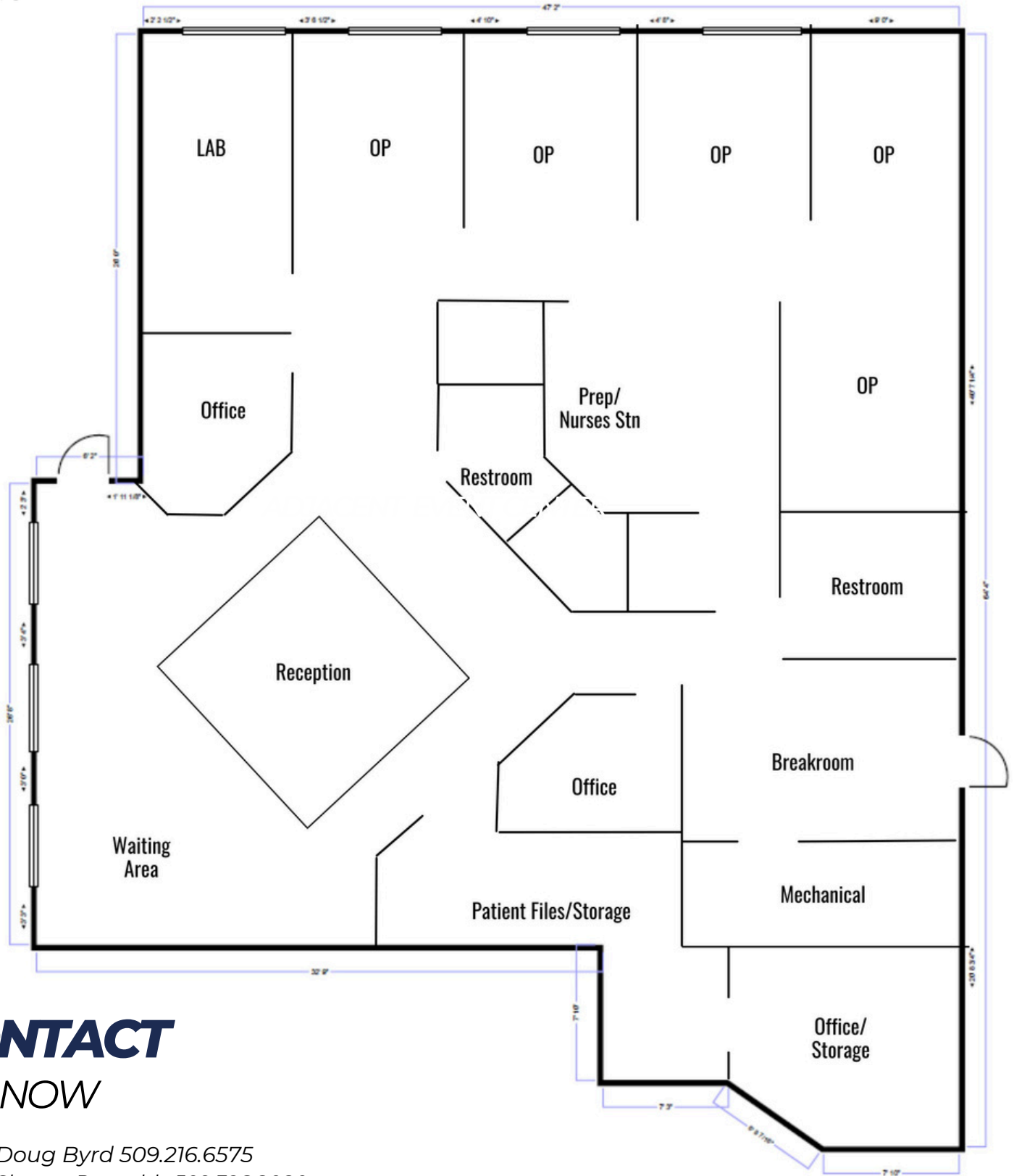
www.ByrdRealEstateGroup.com

PRODUCING PROPERTY SOLUTIONS

All information is furnished by the Owner &/or Broker and believed to be complete and correct. The Owner &/or Broker cannot be responsible for changes, errors, omissions or withdrawals of this offering. The above information is from sources deemed reliable but should be verified by parties that could be adversely affected by any statements or information. This is not an offering of sub-agency, with commission splits to be determined.

PARKING LOT

MULLAN RD



CONTACT
US NOW

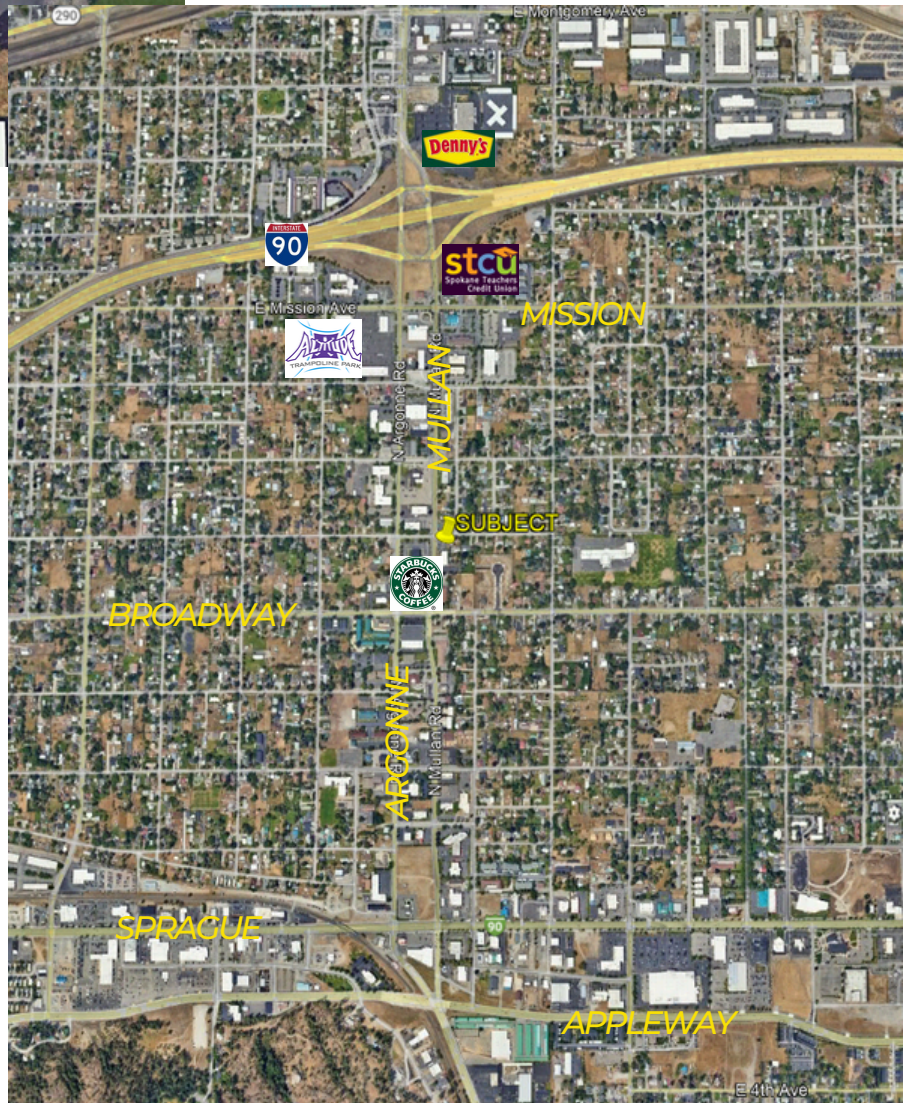


Doug Byrd 509.216.6575
Sharon Reynolds 509.326.8080



BYRD
REAL ESTATE
GROUP

930 N MULLAN



CONTACT US NOW



Doug Byrd 509.216.6575
Sharon Reynolds 509.326.8080

www.ByrdRealEstateGroup.com

PRODUCING PROPERTY SOLUTIONS

All information is furnished by the Owner &/or Broker and believed to be complete and correct. The Owner &/or Broker cannot be responsible for changes, errors, omissions or withdrawals of this offering. The above information is from sources deemed reliable but should be verified by parties that could be adversely affected by any statements or information. This is not an offering of sub-agency, with commission splits to be determined.