



RENOVATIONS UNDERWAY

3827 ST VALENTINE WAY | ORLANDO | FL | 32811

FOR MORE INFORMATION:

JOEY WOODMAN, SIOR

407.748.5888

joey.woodman@foundrycommercial.com

TRAVIS HAMMOND

407.401.1707

travis.hammond@foundrycommercial.com

FOUNDRY COMMERCIAL

420 S Orange Ave, Suite 400
Orlando, FL 32801

www.foundrycommercial.com



PROPERTY FEATURES

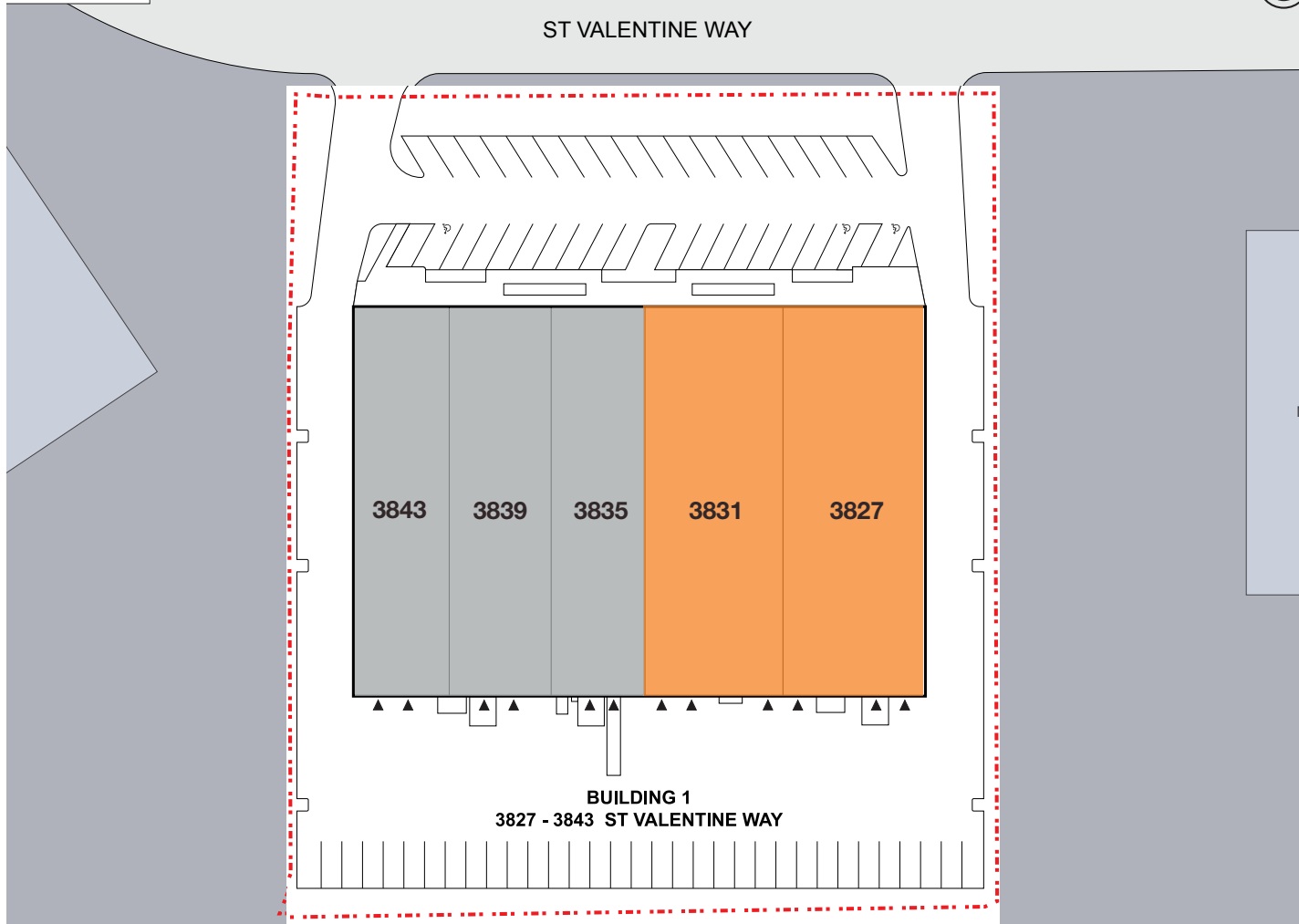
- Modern New Paint Scheme
- New Roof
- New Landscaping
- Resurfaced & Striped Parking
- High-end Make Ready Office Finish
- 277/240v 3-Phase Power
- 1.16/1,000 parking ratio
- Frontage on St Valentine Way, located in 33rd St Industrial Park



The information contained herein is believed to be accurate but is not warranted as to its accuracy and may change or be updated without notice. Seller or landlord makes no representation as to the environmental condition of the property and recommends purchaser's or tenant's independent investigation.

AXIS POINT

SITE PLAN



FOR MORE INFORMATION

JOEY WOODMAN, SIOR
407.748.5888
joey.woodman@foundrycommercial.com

TRAVIS HAMMOND
407.401.1707
travis.hammond@foundrycommercial.com

FOUNDRY COMMERCIAL
420 S Orange Ave, Suite 400
Orlando, FL 32819
www.foundrycommercial.com

GRIDLINE | AXIS POINT
3827 ST VALENTINE WAY
ORLANDO, FL 32811

AVAILABILITIES

AVAILABLE OCCUPIED

BLDG	SUITE	TOTAL SF	OFFICE SF	AVAILABLE
1	3827	10,338	1,382	5/1/26
1	3831	9,932	1,759	7/1/26

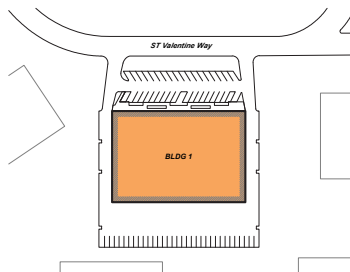
AXIS POINT

BUILDING 1

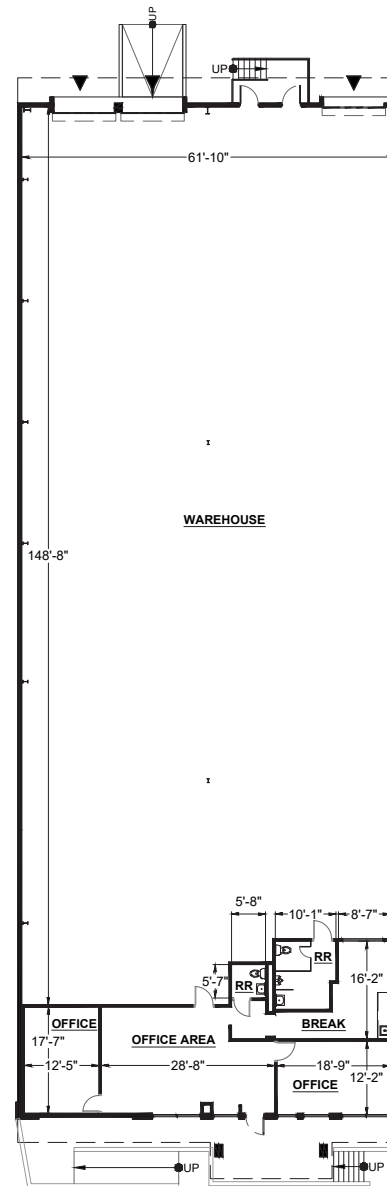
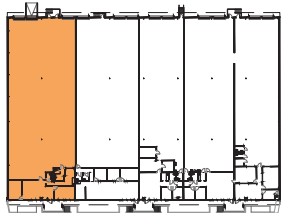
SUITE 3827

- ±10,338 Total SF
- ±1,382 SF Office
- ±8,956 SF Warehouse
- ±17' - 24' Clear Height
- 3 Dock High Doors
- Call for Rate

SITE KEY PLAN



BUILDING KEY PLAN



FOR MORE INFORMATION

JOEY WOODMAN, SIOR

407.748.5888

joey.woodman@foundrycommercial.com

TRAVIS HAMMOND

407.401.1707

travis.hammond@foundrycommercial.com

FOUNDRY COMMERCIAL

420 S Orange Ave, Suite 400

Orlando, FL 32819

www.foundrycommercial.com

GRIDLINE | AXIS POINT

3827 ST VALENTINE WAY

ORLANDO, FL 32811

FOUNDRY
COMMERCIAL

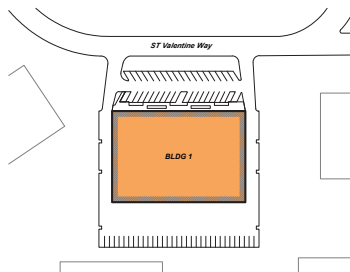
AXIS POINT

BUILDING 1

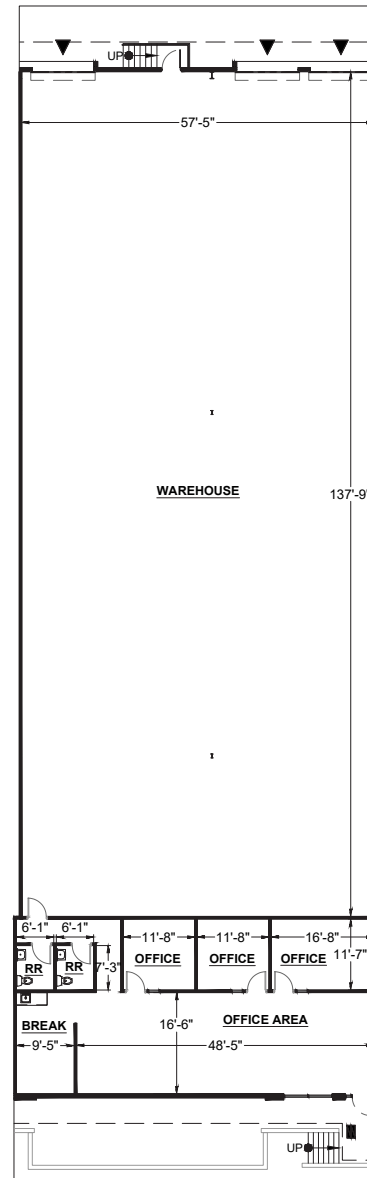
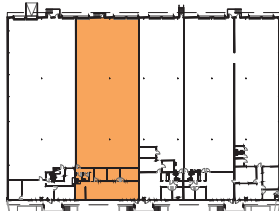
SUITE 3831

- ±9,932 Total SF
- ±1,759 SF Office
- ±8,173 SF Warehouse
- ±17' - 24' Clear Height
- 3 Dock High Doors
- Call for Rate

SITE KEY PLAN



BUILDING KEY PLAN



FOR MORE INFORMATION

JOEY WOODMAN, SIOR

407.748.5888

joey.woodman@foundrycommercial.com

TRAVIS HAMMOND

407.401.1707

travis.hammond@foundrycommercial.com

FOUNDRY COMMERCIAL

420 S Orange Ave, Suite 400

Orlando, FL 32819

www.foundrycommercial.com

GRIDLINE | AXIS POINT

3827 ST VALENTINE WAY

ORLANDO, FL 32811

FOUNDRY
COMMERCIAL

AXIS POINT

GRIDLINE
ORLANDO
UNDER NEW OWNERSHIP



FOR MORE INFORMATION

JOEY WOODMAN, SIOR

407.748.5888

joey.woodman@foundrycommercial.com

TRAVIS HAMMOND

407.401.1707

travis.hammond@foundrycommercial.com

FOUNDRY COMMERCIAL

420 S Orange Ave, Suite 400

Orlando, FL 32819

www.foundrycommercial.com

GRIDLINE | AXIS POINT

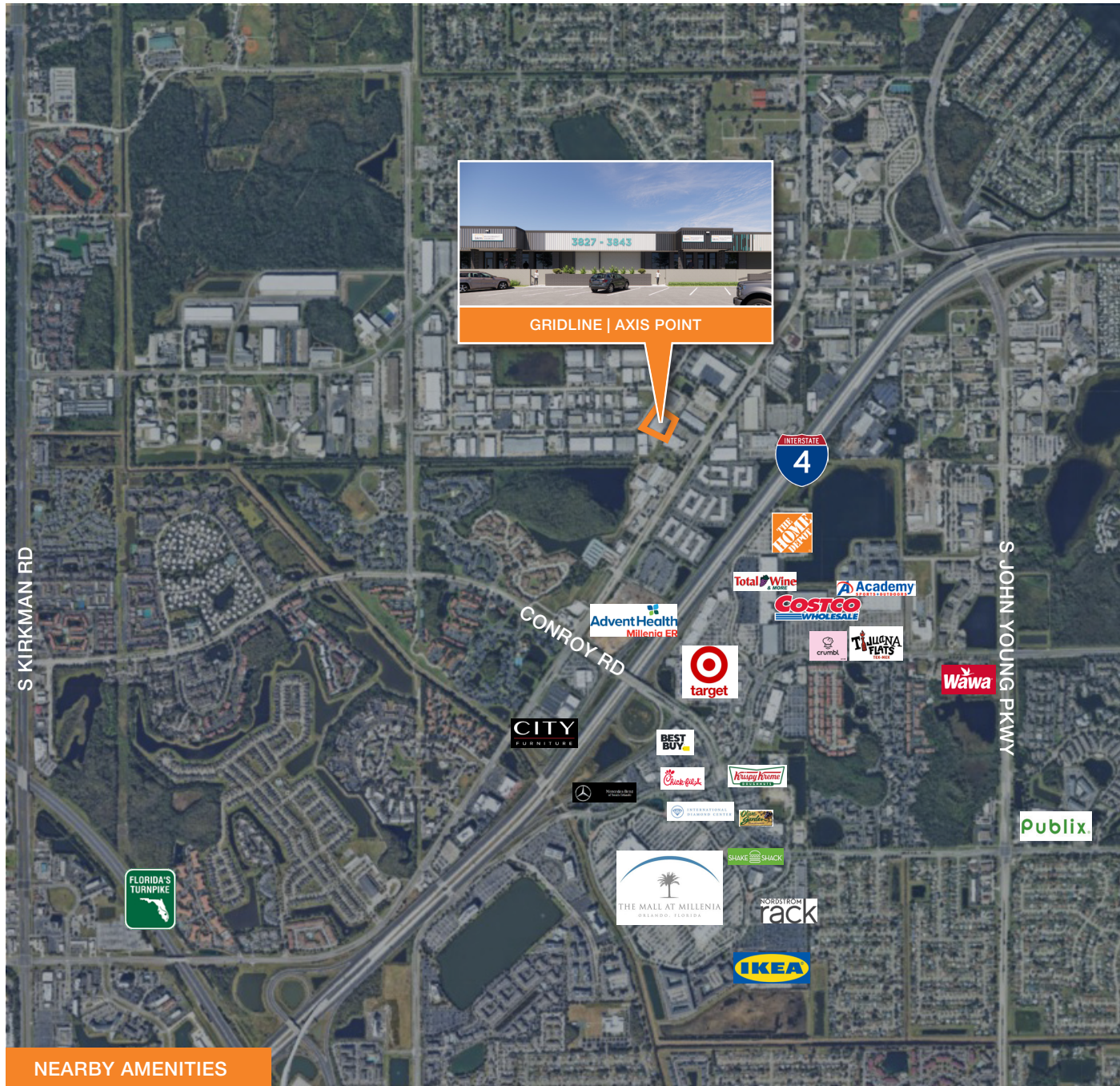
3827 ST VALENTINE WAY

ORLANDO, FL 32811

FOUNDRY
COMMERCIAL

AXIS POINT

AMENITIES



NEARBY AMENITIES

- The Mall of Millenia
- Costco Wholesale
- Target
- The Home Depot
- AdventHealth Millenia ER
- Total Wine

FOR MORE INFORMATION

JOEY WOODMAN, SIOR
407.748.5888
joey.woodman@foundrycommercial.com

TRAVIS HAMMOND
407.401.1707
travis.hammond@foundrycommercial.com

FOUNDRY COMMERCIAL
420 S Orange Ave, Suite 400
Orlando, FL 32819
www.foundrycommercial.com

GRIDLINE | AXIS POINT
3827 ST VALENTINE WAY
ORLANDO, FL 32811