



LINLO PROPERTIES

**4600 Lena Drive
Mechanicsburg, PA 17055**



Property Overview

Rental Rate:	\$22.95/SF/YR	Lot Size:	2.60 AC
Property Type:	Office	Rentable Building Area:	43,280 SF
Lease Type:	Gross (excl. in-suite janitorial)	Year Built:	2017-2018
TI Allowance:	Available	Security:	Secured Access
Façade Signage:	Available	Parking:	5.0/1,000 SF

Major Roadway(s) Access:

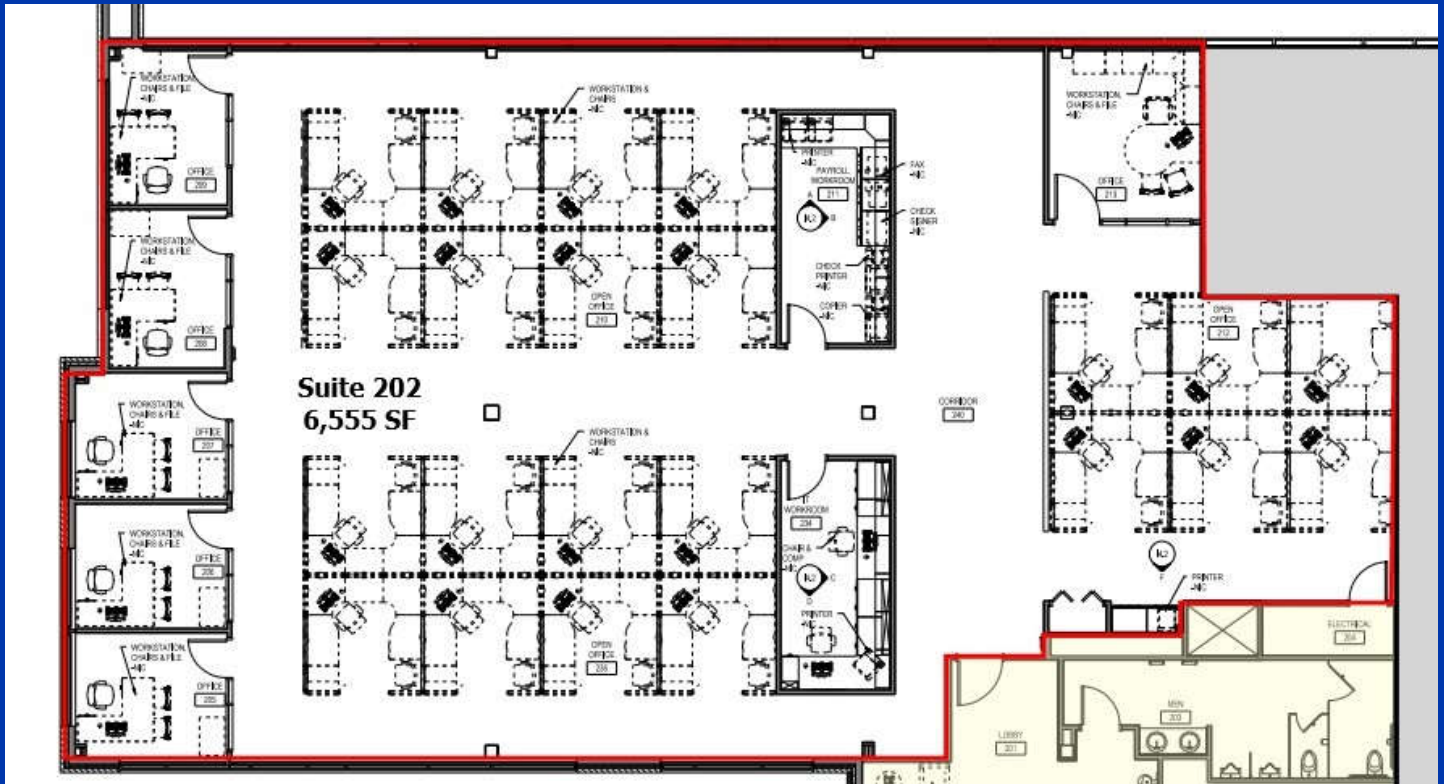
US Rts. 15, Interstates 81, 83, and 76 (PA Turnpike)

Property Highlights:

Floor-to-ceiling windows, spectacular views across the Cumberland Valley, excellent visibility from the main road, natural light, local ownership and property management.

THANK YOU

Thank you for your interest in this office space and Linlo Properties. If you would like additional information on this property, please contact a member of our leasing team or visit our website at www.linloproperties.com.



Leasing Team Contacts:

Tracey J. Tressler

Sr. Director of Real Estate
ttressler@linloproperties.com
(717) 307-2002 Ext. 16

James R. Casey

VP Administration and Leasing
jcasey@linloproperties.com
(717) 307-2002 Ext. 19



LINLO PROPERTIES

150 Corporate Center Drive; Suite 100
Camp Hill, PA 17011
(717) 307-2002