



Click Here to Visit the Website and Sign Up



Georgian Row - Waiting List Active!

New Construction Office Condos in Salisbury Village for Sale

New Construction Office Condos

- ✓ Medical or General Office
- ✓ Up to 6 Units Available in the Heart of Salisbury Village
- ✓ Delivery in 2027



QUICK FACTS

ADDRESS 2412 Dovercourt Drive
Midlothian, VA 23112

PID 725-71-50-48-400-000

ZONING C-3

SF 3,127 – 19,526

Georgian Row offers a rare opportunity to purchase an office condo in one of the Richmond area’s most established and sought-after neighborhoods, Salisbury Village. The project features distinctive architecture that sets it apart from typical office product in the market. Designed to create a strong, professional presence, each unit reflects a level of quality and character not available in the Richmond market today.

Located in the center of Salisbury Village, Georgian Row provides immediate access to Route 288, Midlothian Turnpike, and surrounding residential communities.

This central location supports easy commutes, strong visibility, and convenience for both employees and clients.

Ownership also gives users the flexibility to design their space around their specific needs. Each unit owner will have the ability to select their finishes and fully customize the interior—allowing businesses to control layout, branding, and long-term functionality.

With only a limited number of units available, Georgian Row represents one of the last chances to secure ownership in the highest income zip code in the Richmond MSA.



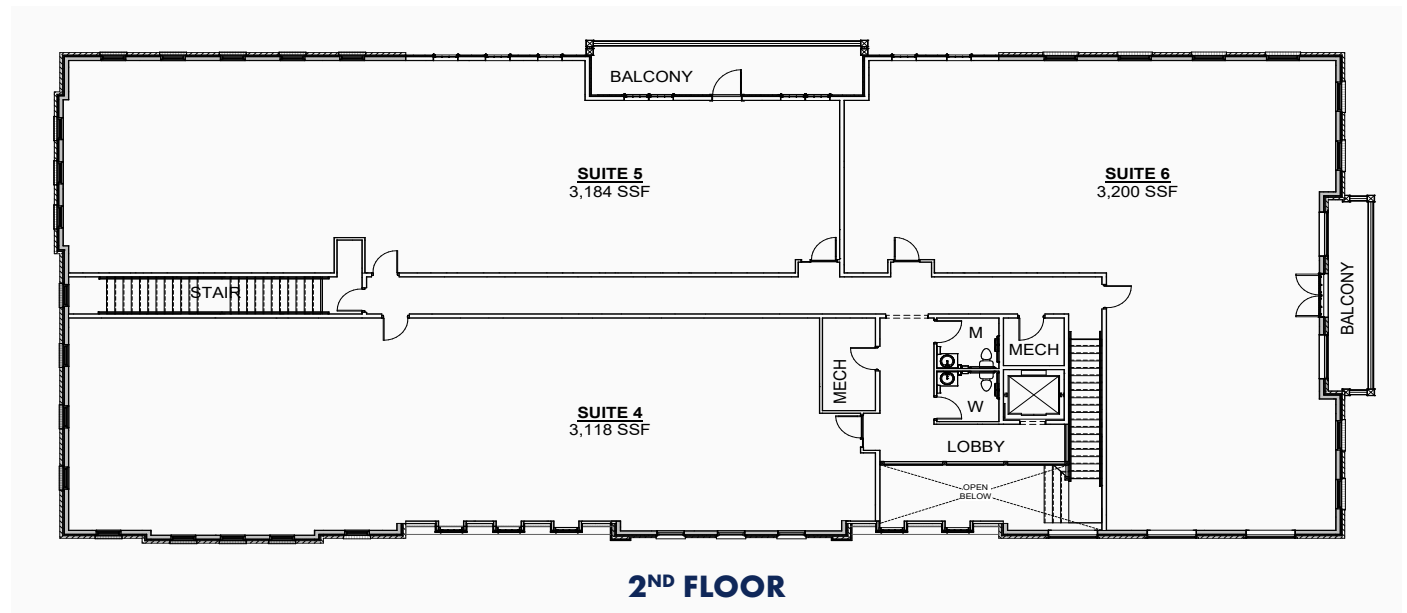
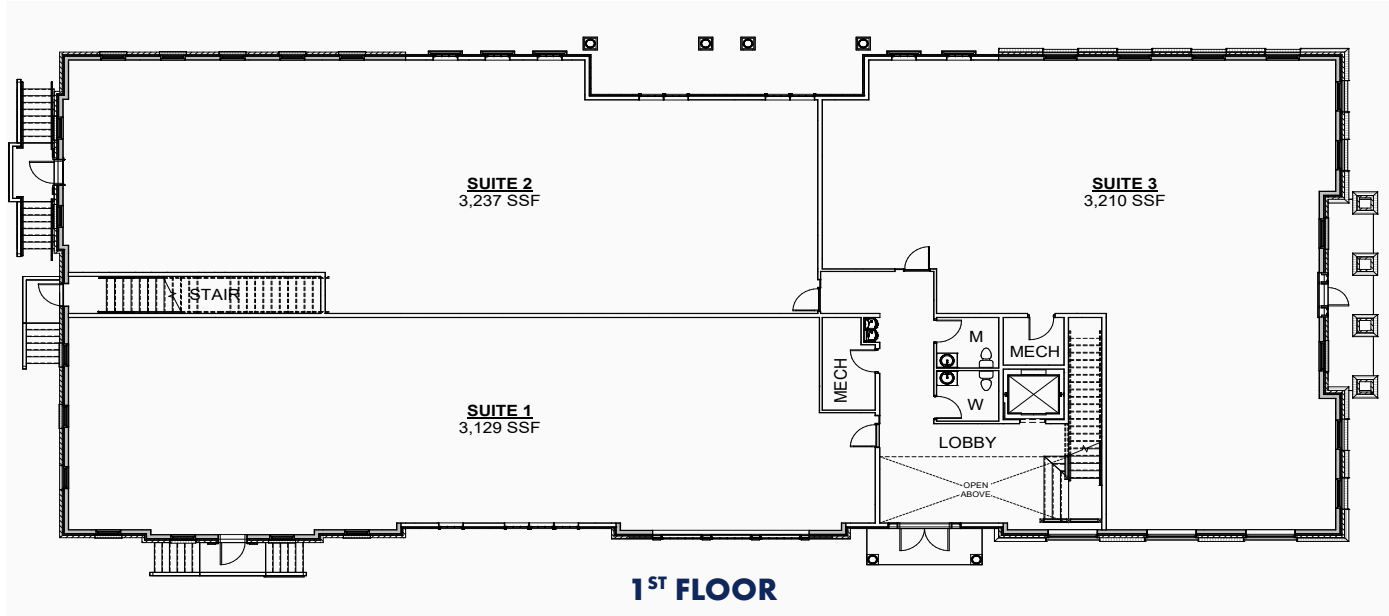
Click Here to Visit the Website and Sign Up



RIGHT SIDE PERSPECTIVE



LEFT SIDE PERSPECTIVE



Salisbury Village

Nestled in the vibrant Chesterfield County, along the Robious Road corridor, Salisbury is one of Midlothian's most established neighborhoods. This well-respected community, founded in 1956, now boasts approximately 1,600 homes. Salisbury offers a unique blend of tranquility and convenience, providing residents with immediate access to major roadways, shopping centers, and a wealth of outdoor activities. Conveniently situated in the heart of the Robious Road Corridor, Salisbury is just a stone's throw away from anything one could ever need. The community's prime location ensures easy access to Route 288 and the village of Midlothian, placing schools, shopping plazas, libraries, and parks within a short drive.

