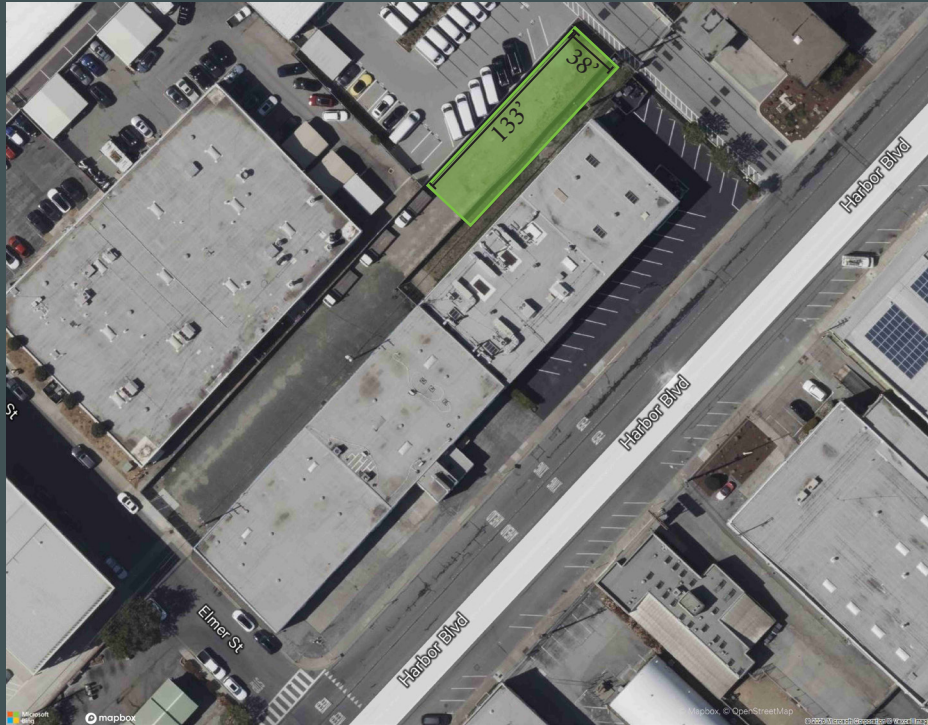


Elmer Street Belmont, California



Property Highlights

- Size: ±5,055 SF secured fence yard area
- Convenient access to highway 101 and El Camino Real
- Close vicinity to popular amenities
- Zoning M1
- Flexible terms
- Rate: \$0.75/sq. ft./month Industrial Gross

Contact Us

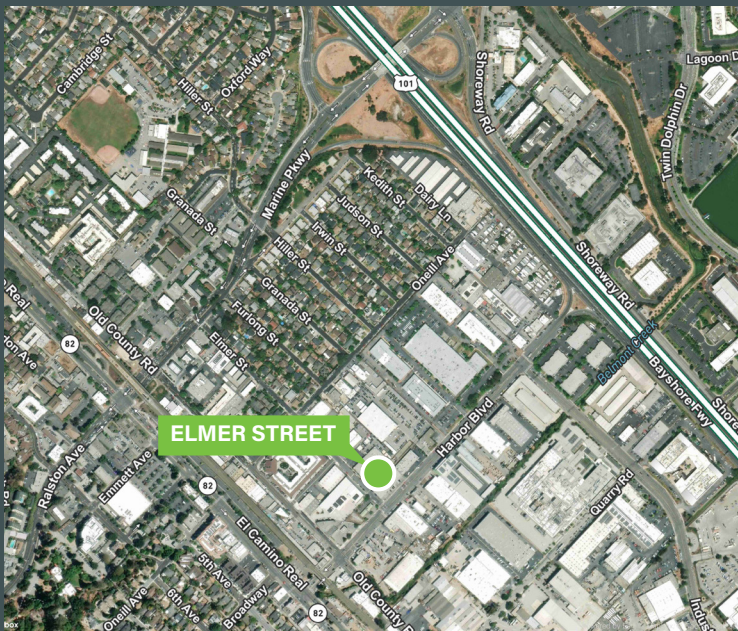
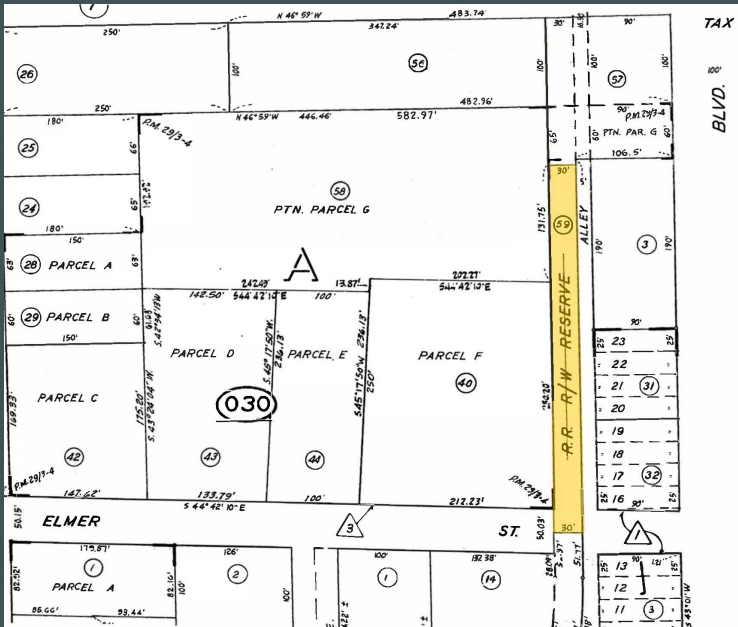
Robert McSweeney
Senior Vice President
+1 650 759 0202
bob.mcsweeney@cbre.com
Lic. 00934240

Matt Murray
Senior Associate
+1 408 781 9322
matt.murray@cbre.com
Lic. 02083830

Elmer Street
Belmont, California

For Lease

Site Plan



Contact Us

Robert McSweeney
Senior Vice President
+1 650 759 0202
bob.mcsweeney@cbre.com
Lic. 00934240

Matt Murray
Senior Associate
+1 408 781 9322
matt.murray@cbre.com
Lic. 02083830