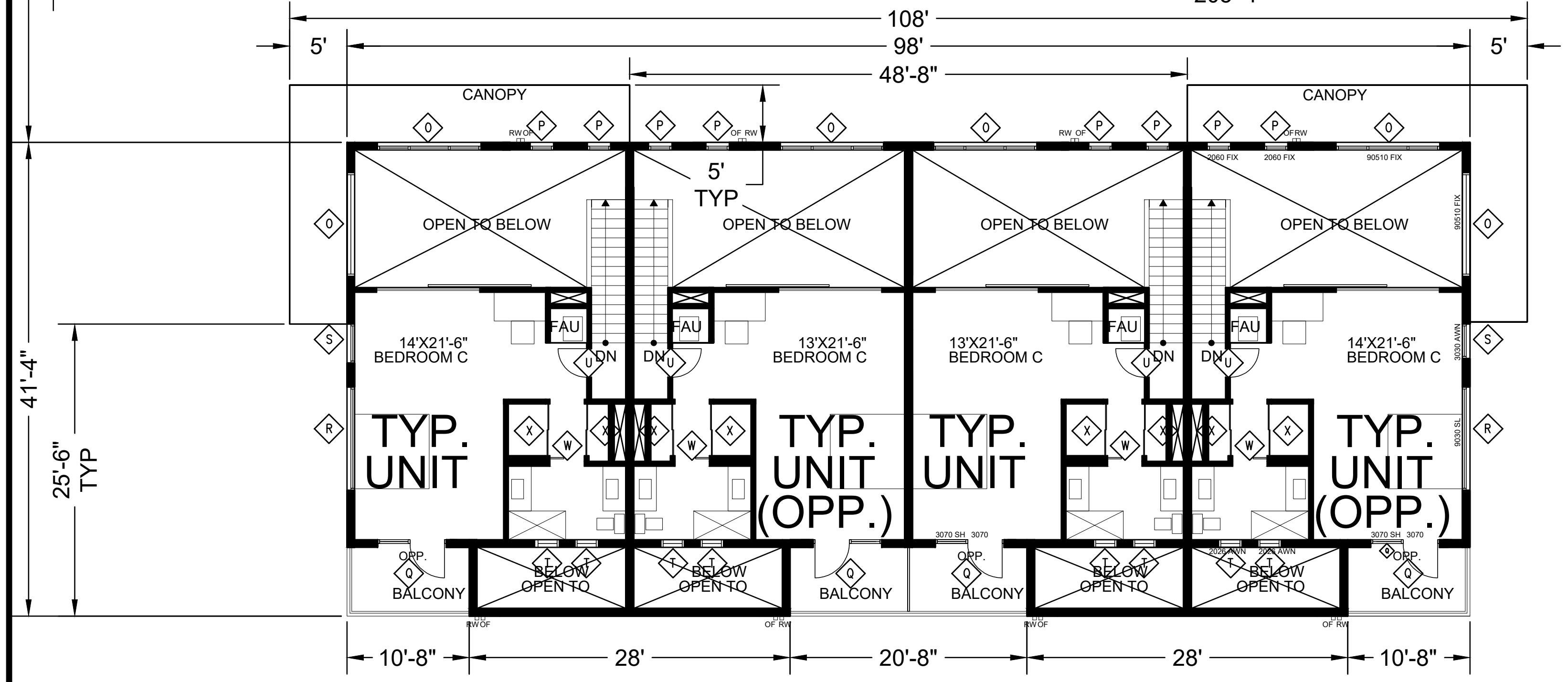
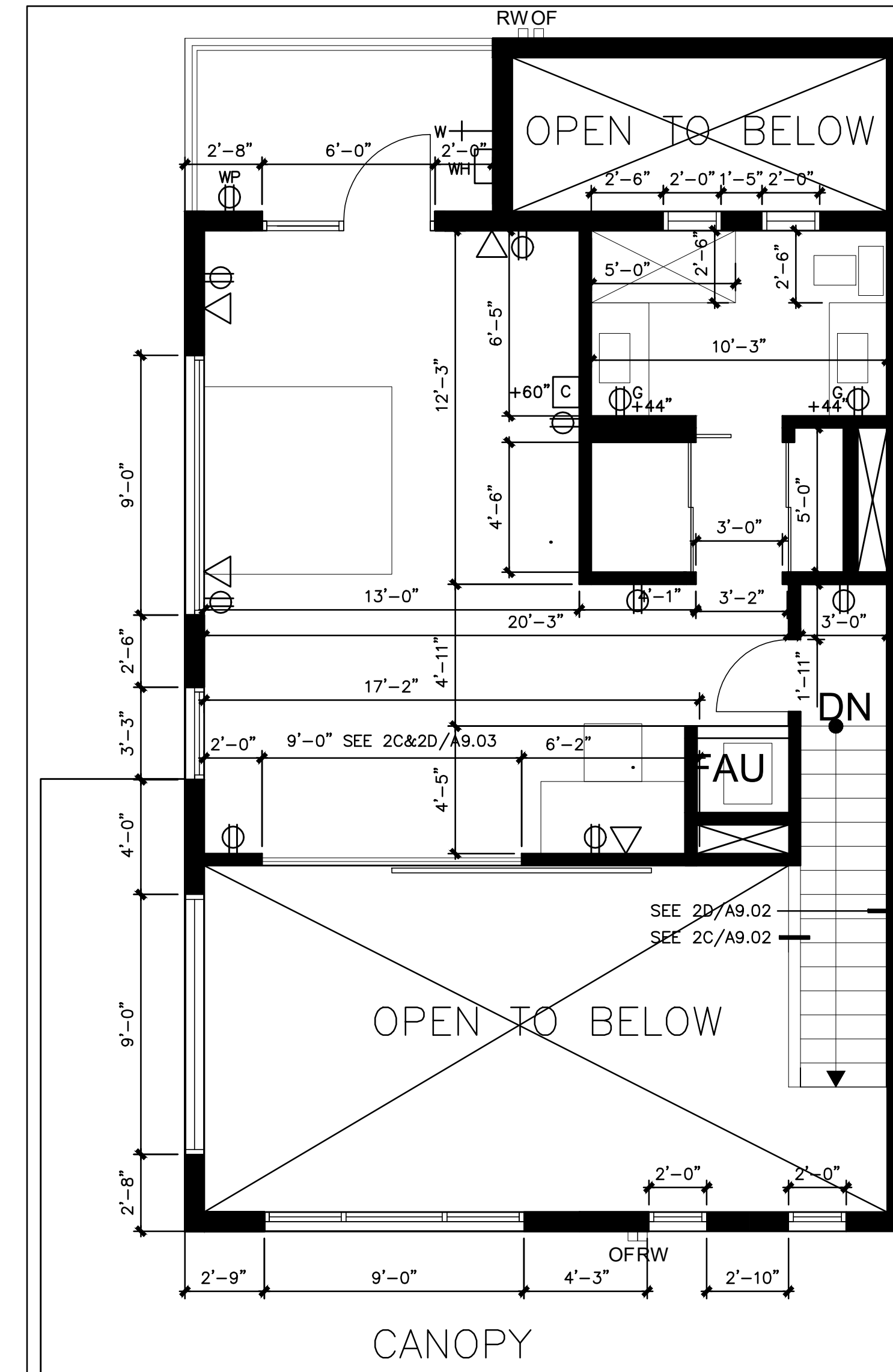


1 3RD FLOOR PLAN - BUILDING A  
SCALE: 1/8" = 1'-0"



2 3RD FLOOR PLAN - BUILDING B  
SCALE: 1/8" = 1'-0"

MAX LENGTH OF COMMON PATH OF EGRESS IS 125' WHEN BLDG EQUIPPED WITH APPROVED AUTOMATIC FIRE SPRINKLER SYSTEM THROUGHOUT EACH SUITE IS LESS THAN 2000 SF (WITHOUT GARAGE) = 10 OCCUPANT MAX PER SUITE



3 3RD FLOOR PLAN - TYPICAL UNIT  
SCALE: 1/4" = 1'-0"

**GENERAL NOTES**

A SEE SHEET A2.01 FOR GENERAL NOTES

**LEGEND**

- NEW DOOR / WINDOW
- NEW SLIDING DOOR WITH MIRROR @ BEDROOM
- NEW WALL  
EXTERIOR WALL - SEE 5/A9.01  
(SEE 1/A9.04 FOR FIRE RATED END CONDITION)  
(SEE 1/A9.03 FOR 10HR FIRE RATED PENETRATION)  
INTERIOR WALL - SEE 1/A9.02  
(SEE 6/A9.02 FOR SOUND REDUCTION DETAIL)  
(SEE 3/A9.03 FOR TILE WAINSCOT DETAIL)  
(SEE 3/A9.04 FOR MECH SHAFT)
- NEW TOILET
- NEW LAVATORY AND COUNTER
- NEW SHOWER
- FAU - FIJANCE - SEE MECH DWG
- SEE ELECTRICAL DWG FOR ELECTRICAL OUTLET
- DUPLEX TELE-COMMUNICATION OUTLET WITH CAT 6E
- WALL MOUNTED RAINWATER LEADER - SEE 4/A9.00
- WALL MOUNTED OVERFLOR RAINWATER LEADER - SEE 4/A9.00

**APPROVAL STAMP**

KIVA# 17-1132; SCMJ# 180059  
APPLICATION: LPRN 1706672



These specifications are the property of Arch Studio, LLP. These documents may not be copied, reproduced, used or implemented in any way, in part or in whole, without the written consent of Arch Studio, LLP. All common law rights of copyright are hereby specifically reserved.

XX.XX.2017	PLANNING REVIEW
06.01.2017	CLIENT REVIEW
06.11.2017	PLANNING REVIEW
07.12.2017	PLANNING REVIEW
12.28.2017	CITY SET
03.30.2018	1ST RESUBMISSION

**BUILDING OWNER**  
GBC DEVELOPMENT LLC  
11830 N 28TH DRIVE  
PHOENIX, AZ 85029  
T: 213.748.2400  
CONTACT: JACOB CARUTHERS

**ARCHITECT**  
ARCHIT STUDIO  
318 WESTLAKE CTR, SUITE 286  
DALY CITY, CA 94015  
T: 650.270.1754  
CONTACT: MARCO FUNG

**CIVIL ENGINEERING**  
TOM HAVES  
859 N. LAFEYETTE DRIVE,  
MEZA, AZ 85201  
T: 480.201.5476

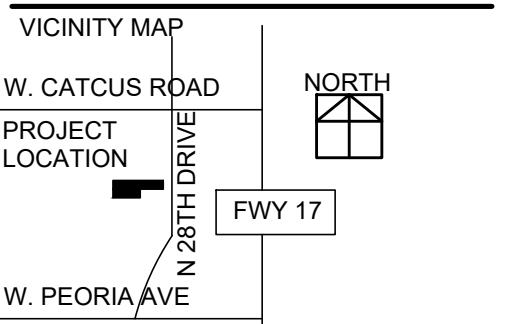
**LANDSCAPE ARCHITECT**  
WAIBEL & ASSOCIATES  
LANDSCAPE ARCHITECTURE  
8611 ST. PRIEST DRIVE, SUITE 101  
TEMPE, AZ 85284  
T: 480.893.3849  
CONTACT: RYAN MAVES

**STRUCTURAL ENGINEERING**  
JRJ ENGINEERING, PLLC  
2111 E. BASELINE ROAD, SUITE F6  
TEMPE, AZ 85283  
T: 480.734.9262  
CONTACT: JAMES JONES

**MEP ENGINEERING**  
INGENIUM DESIGN  
20701 N SCOTTSDALE ROAD  
SUITE 107-614  
SCOTTSDALE, AZ 85255  
O: 480.419.6450  
CONTACT: LISA KOCH

**FIRE PROTECTION ENGINEERING**  
1505 W UNIVERSITY DR., SUITE 101  
TEMPE, AZ 85281  
O: 206.780.8426  
CONTACT: GARY MCDANIEL

**NEW APARTMENT**  
11830 NORTH 28TH DRIVE,  
PHOENIX, AZ 85029  
APN: 149-63-720



Date: 2017.02.26 Project No.: 2017.049

Sheet Title: FLOOR PLAN 3RD FLOOR

Sheet No.: A2.03

Released for Construction  
 Not Released for Construction