

**FOR LEASE**  
**3228 W Norfolk Road**  
**Portsmouth, VA**



**2.76 acres @\$5,600/acre NNN per month; 5,835 sf renovated warehouse \$4,900/month Available November 1<sup>st</sup>**

- 2.76 acre site zoned IN – Heavy Industrial
- Ideally located and in close proximity to Port of Virginia Shipping Terminals:
  - 1 mile to Virginia Gateway Shipping Terminal (VIG)**
  - 2 mile to Portsmouth Marine Terminal (PMT)**
  - 7 miles to Norfolk International Terminal**
- Rail spurs on Commonwealth Railway with connection to Norfolk Southern and CSX
- In close proximity to the interstate highway system and double stack intermodal service

***For Information Contact:***  
**John A. Merenda**  
**3908 Meeting House Road**  
**Virginia Beach, VA 23455**  
**Cell: (757) 560-5476**  
**Fax: (757) 222-2379**  
**johnmerenda1@yahoo.com**

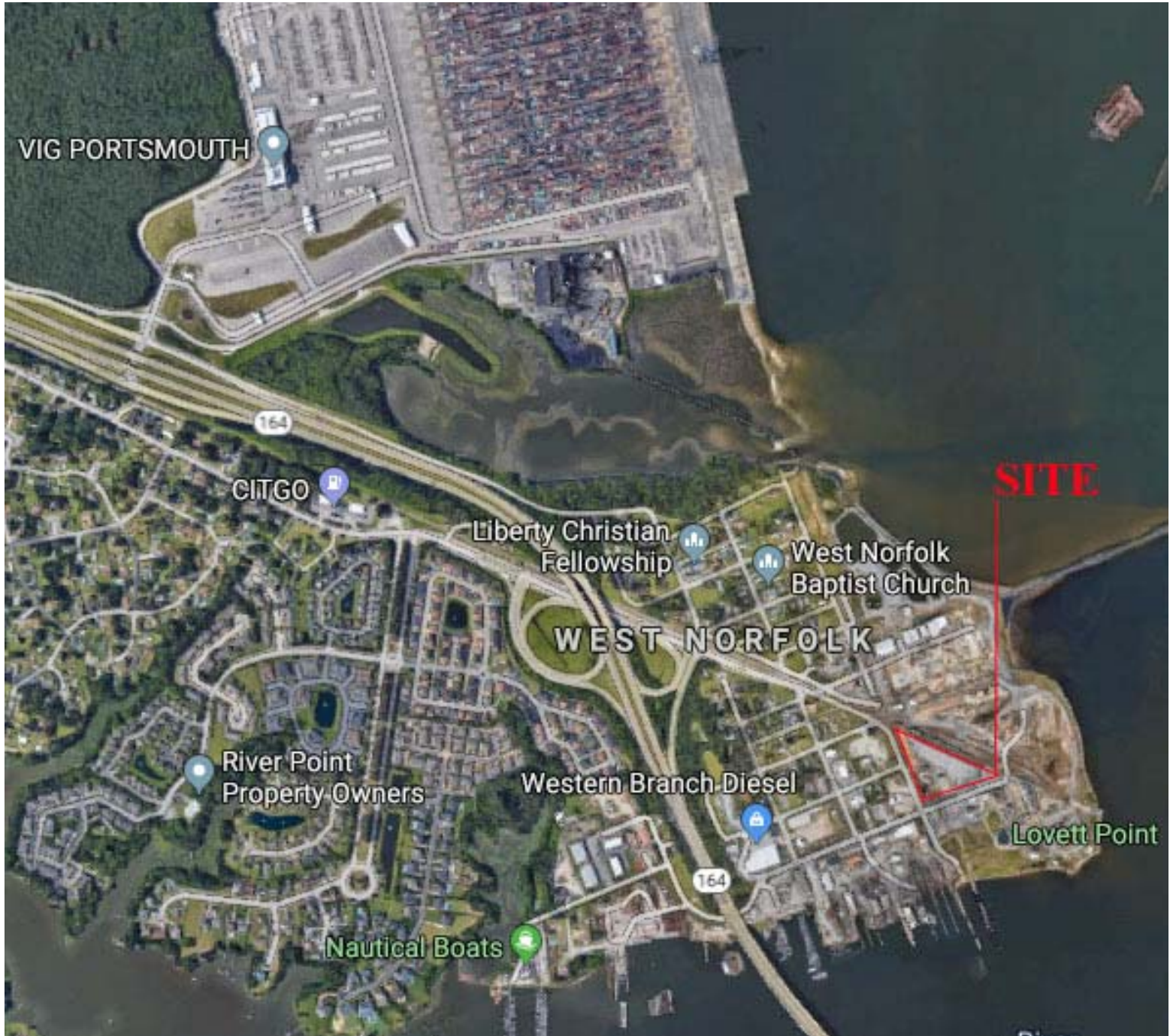


# 3228 W Norfolk Road, Portsmouth, VA

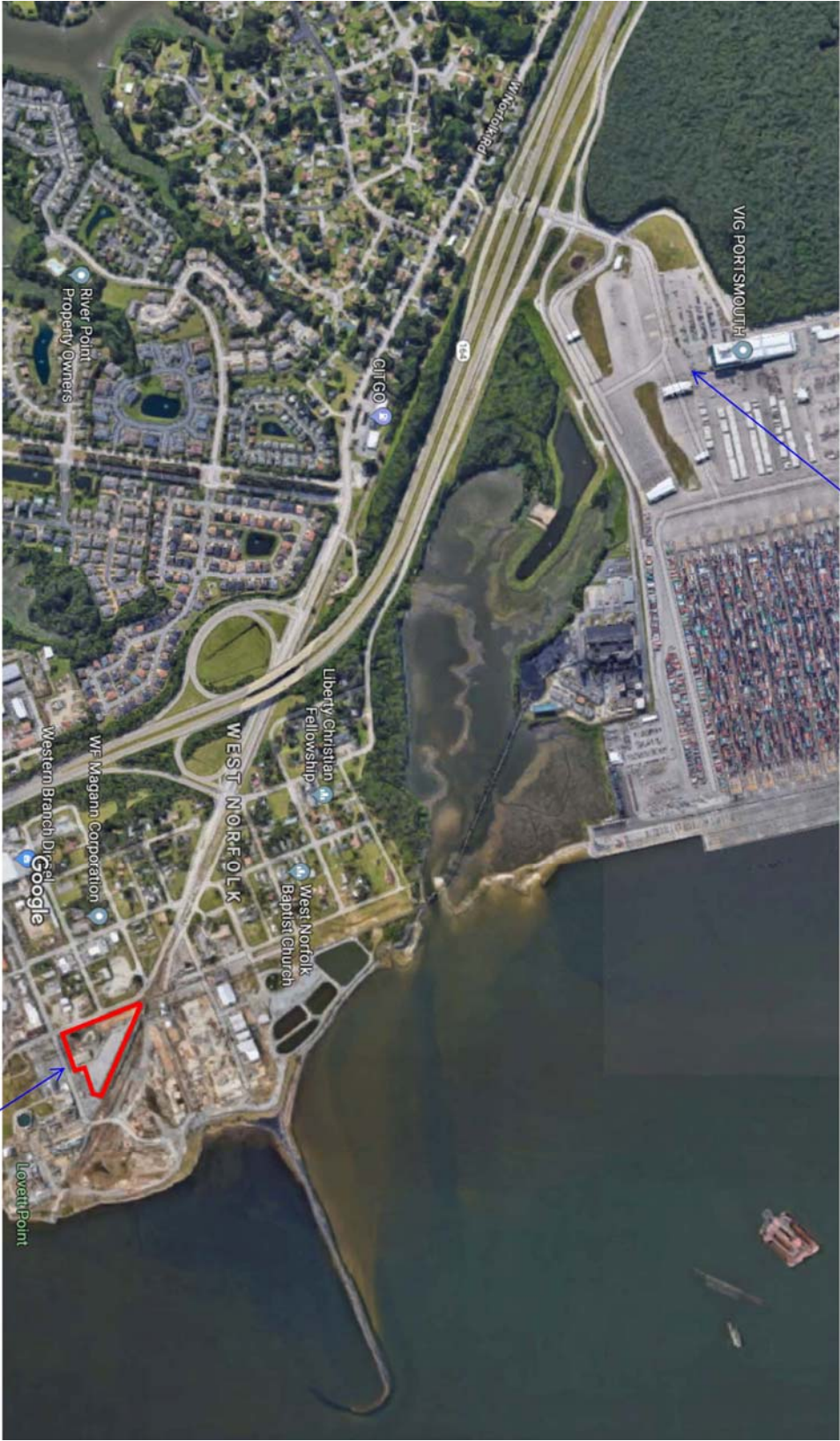




# 3228 W Norfolk Road, Portsmouth, VA



# 3228 W Norfolk Road, Portsmouth, VA



Google Maps

VIG 1.2 Miles to Site

3228 W. Norfolk Rd.  
(Parcel B-2)

Imagery ©2011