

# 11974

## PORTLAND AVE

burnsville, mn

\$430,000

±2,742 SF, 2-stories

Built 2002 and beautifully maintained within the Minnesota Valley Town Offices complex

Ample parking

# OFFICE CONDO FOR SALE



## SETT properties

CONTACT BROKER FOR MORE INFORMATION

Lamar Newburn, SIOR

763.726.8100

lamar@settproperties.com

Alex Livadas

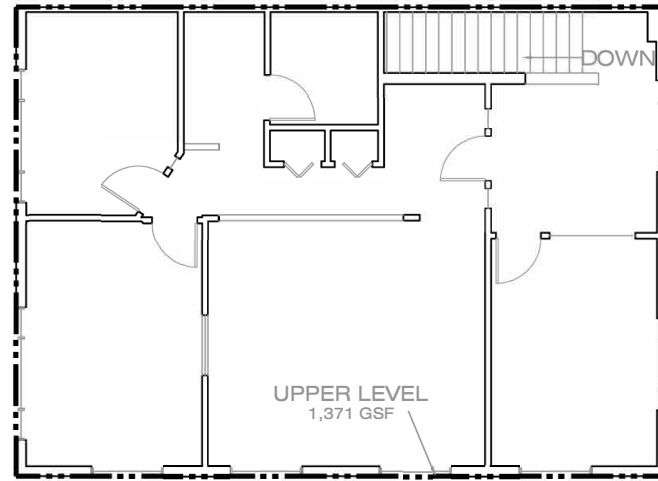
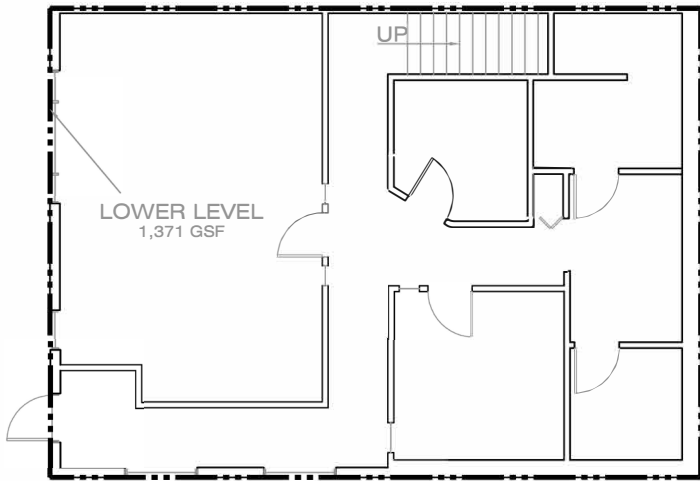
720.796.8881

alex@settproperties.com

Brian Cole, J.D.

720.796.8882

brian@settproperties.com



# 11974 PORTLAND AVE

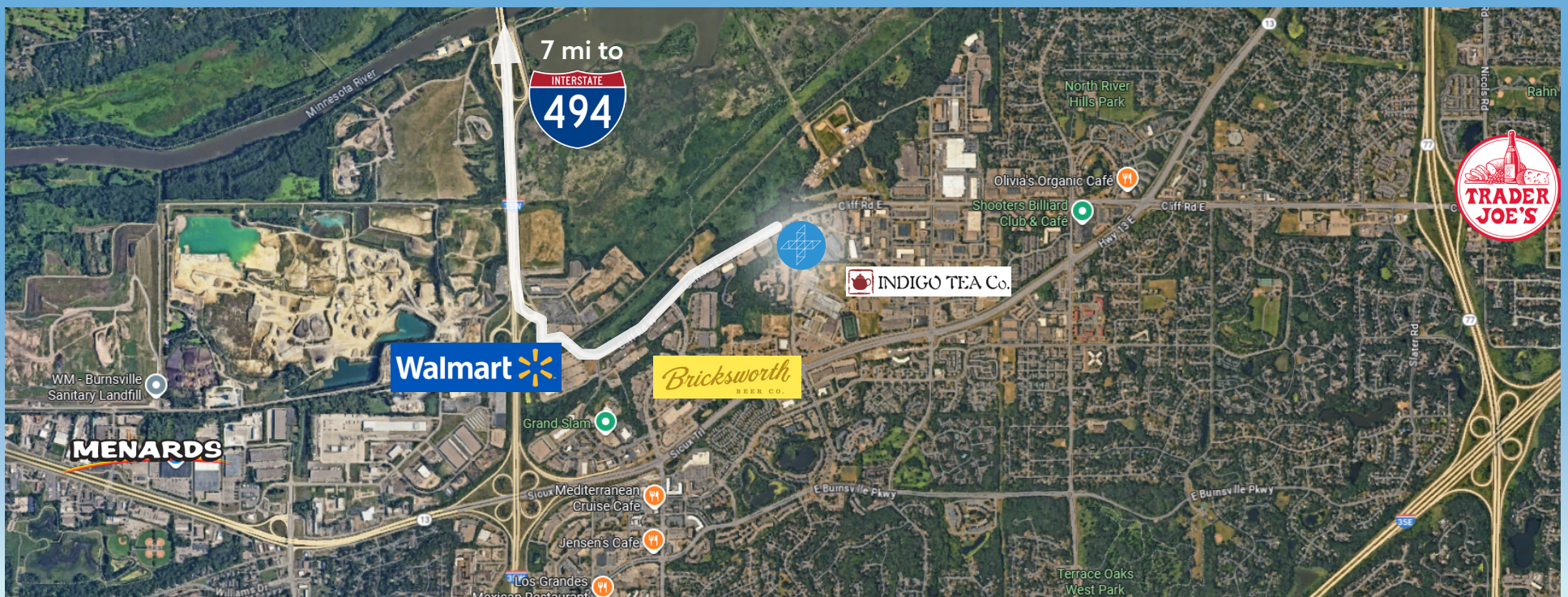


# 11974

## PORTLAND AVE

burnsville, mn

	1 Mile	3 Miles	5 Miles
2024 Population	5,019	66,597	198,619
2024 Households	2,343	26,911	78,794
Avg Household Income	\$83,045	\$100,410	\$105,094
Avg Home Value	\$258,829	\$300,518	\$311,058
Median Age	38.5	39.6	40.1



**SETT**properties

### CONTACT BROKER FOR MORE INFORMATION

**Lamar Newburn, SIOR**  
763.726.8100  
lamar@settproperties.com

**Alex Livadas**  
720.796.8881  
alex@settproperties.com

**Brian Cole, J.D.**  
720.796.8882  
brian@settproperties.com