

FOR LEASE

THROAT

# TRYON OFFICE CENTER II

1110 SE Cary Parkway | Cary, NC 27518



CAPITAL  
ASSOCIATES®

# TRYON OFFICE CENTER II

1110 SE Cary Parkway | Cary, NC 27518

<b>PROPERTY TYPE</b>	Medical Office
<b>BUILDING SIZE</b>	32,500 SF
<b>AVAILABLE SPACE</b>	
SUITE 200	3,657 SF
<b>LEASING RATE</b>	Contact Broker
<b>LEASE TYPE</b>	Full Service Gross
<b>YEAR BUILT</b>	2006
<b>COUNTY</b>	Wake
<b>LOCATION</b>	Cary, NC
<b>FLOORS</b>	2
<b>PARKING</b>	4.0/1,000 SF

**BRET MULLER**  
919.523.4200  
bmuller@capitalassociates.com

**WES JOHNSON**  
919.422.4853  
wjohnson@capitalassociates.com



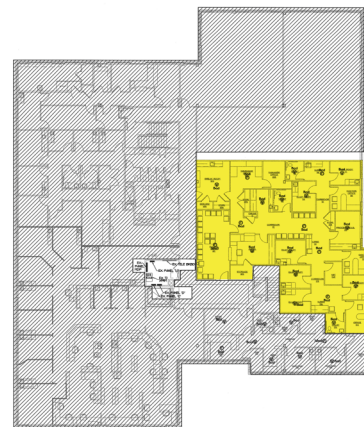
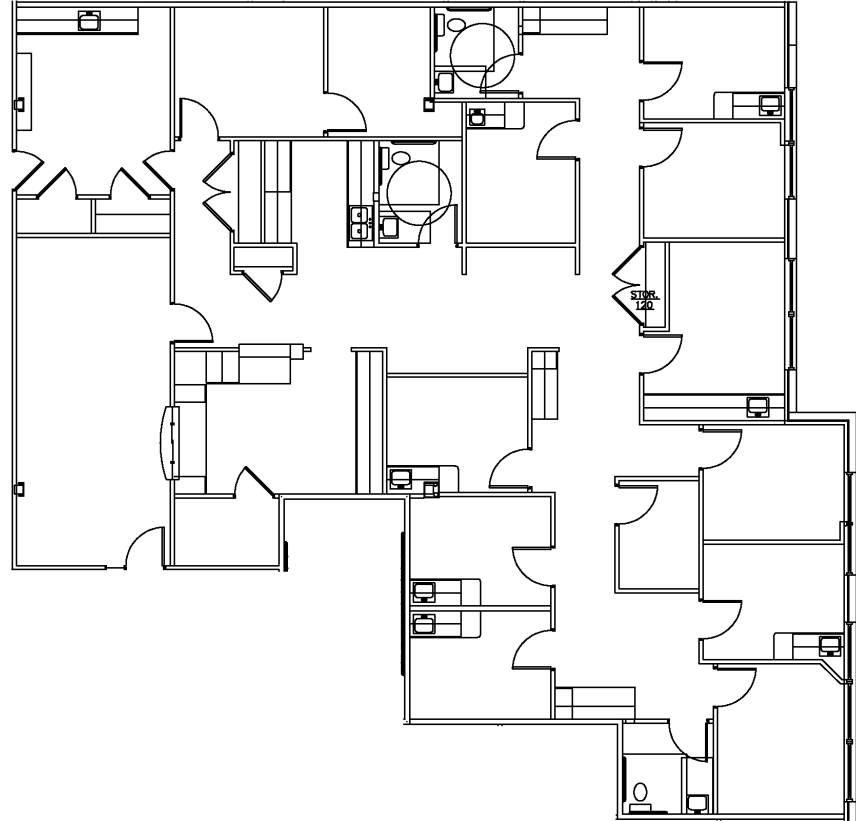
# TRYON OFFICE CENTER II

1110 SE Cary Parkway | Cary, NC 27518

**AVAILABLE**

Second Floor  
Suite 200

3,657 SF



**BRET MULLER**

919.523.4200

[bmuller@capitalassociates.com](mailto:bmuller@capitalassociates.com)

**WES JOHNSON**

919.422.4853

[wjohnson@capitalassociates.com](mailto:wjohnson@capitalassociates.com)



# TRYON OFFICE CENTER II

1110 SE Cary Parkway | Cary, NC 27518

## PROPERTY HIGHLIGHTS

Tryon Office Center II is a two-story, Class B medical office building totaling 32,500 SF and located one mile from Cary's WakeMed Campus. It's situated in the heart of Cary's medical hub and home to a diverse mix of renowned Medical Practitioners and Specialists.

- Located near restaurants, RDU International Airport, and lodging
- Easily accessible from I-40, US-64, US-1, and the I-440 Beltline

**BRET MULLER**

919.523.4200

[bmuller@capitalassociates.com](mailto:bmuller@capitalassociates.com)

**WES JOHNSON**

919.422.4853

[wjohnson@capitalassociates.com](mailto:wjohnson@capitalassociates.com)

