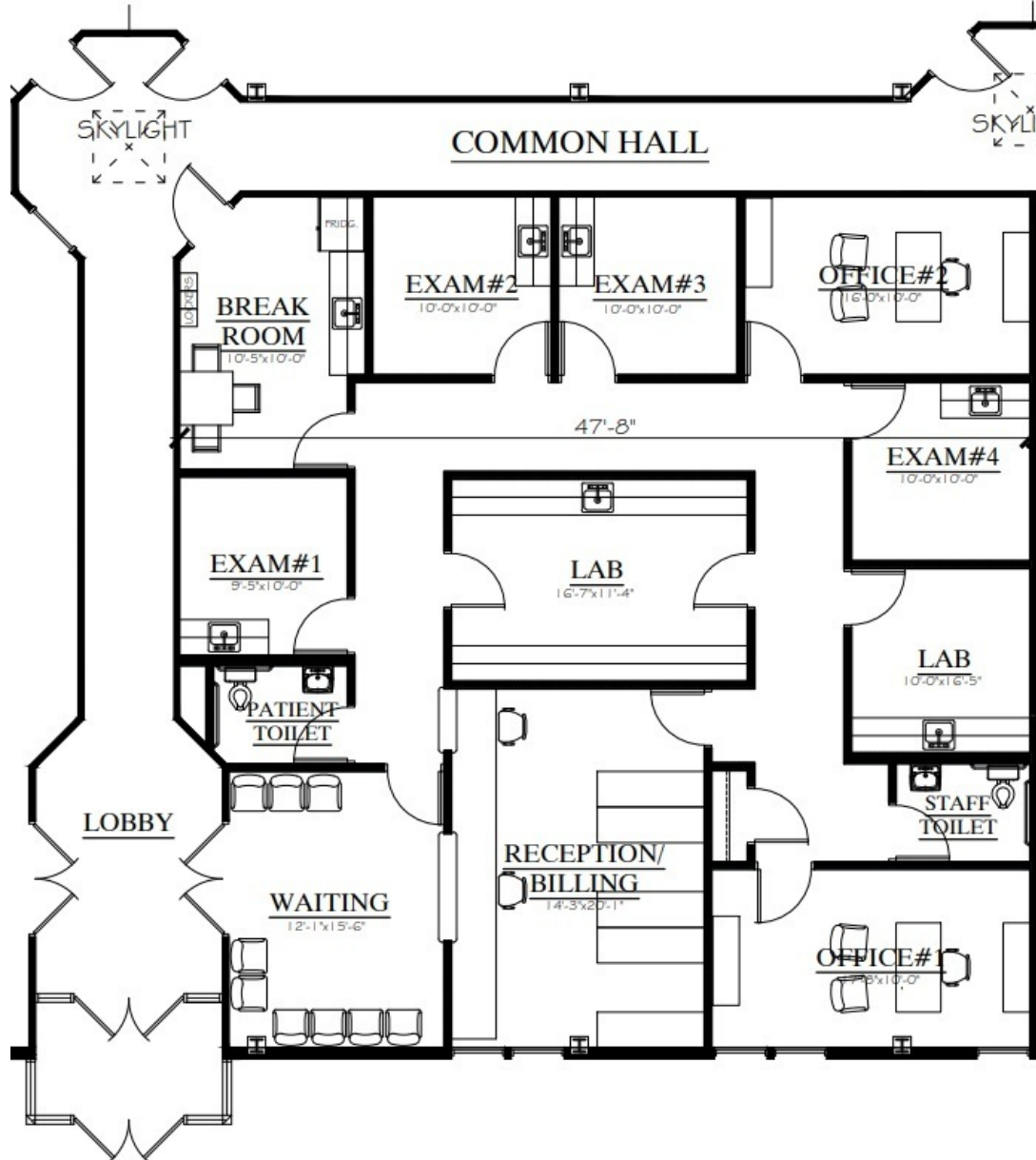


# SUITE 170 | 2,500 - 4,898 SF

2700-2800 KESLINGER ROAD | GENEVA, IL



## SPACE NOTES

- Concept Plan for +/- 2,500 SF
- Monument Signage Available
- Ready to go Medical and Dental Spaces Available
- Newer Construction Building with full custom buildouts available
- High Parking Ratio (4.88 Spaces/1,000 SF)



**RYAN MOEN**

630.480.6346

rmoen@versares.com

**JOHN MILLNER**

630.480.6342

JMillner@VersaRES.com

1 MID AMERICA PLAZA, 3RD FLOOR  
OAKBROOK TERRACE, IL 60181  
630.480.6413

EXCLUSIVELY LISTED BY

**VERSA**  
REAL ESTATE SERVICES