



**NOW AVAILABLE**

# OFFICE SPACE FOR LEASE

## Key Features

- South Meridian Ave frontage with I-40 visibility
- Signage opportunity
- Close proximity to I-40 & I-44
- Located near numerous retail, restaurants, hotels and just minutes from Will Rogers World Airport
- On-site Parking

## Property Highlights

Building Size:	± 65,520 SF
Available SF:	± 251 - 44,318 SF
Stories:	7
Lot Size:	± 2.40 AC
Parking Ratio:	2.93/1000
	192 Surface Parks



Lease Rate  
**\$16.00 FSG**



# OFFICE SPACE FOR LEASE

**MERIDIAN TOWER**  
909 S Meridian Ave  
Oklahoma City, OK 73108



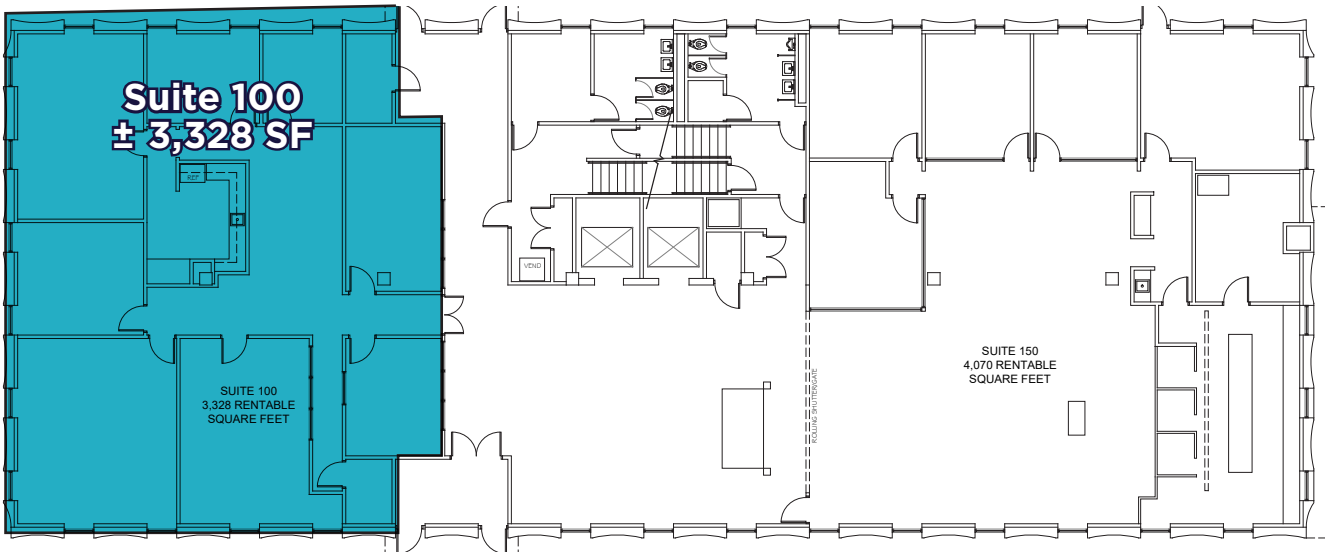
## AVAILABLE SPACE

FLOOR #	SUITE #	AVAILABLE SF	FLOOR CONTINGENCY	LEASE RATE
1st Floor	Suite 100	± 3,328 SF	± 3,328 SF	\$16.00 FSG
2nd Floor	Suite 200	± 4,965 SF	± 4,965 SF	\$16.00 FSG
3rd Floor	Suite 300	± 3,000 SF	± 9,035 SF	\$16.00 FSG
3rd Floor	Suite 305	± 1,175 SF	± 9,035 SF	\$16.00 FSG
3rd Floor	Suite 310	± 1,436 SF	± 9,035 SF	\$16.00 FSG
3rd Floor	Suite 350	± 2,381 SF	± 9,035 SF	\$16.00 FSG
3rd Floor	Suite 375	± 859 SF	± 9,035 SF	\$16.00 FSG
4th Floor	Suite 405	± 561 SF	± 4,977 SF	\$16.00 FSG
4th Floor	Suite 406	± 1,136 SF	± 4,977 SF	\$16.00 FSG
4th Floor	Suite 410	± 2,026 SF	± 4,977 SF	\$16.00 FSG
4th Floor	Suite 412	± 1,254 SF	± 4,977 SF	\$16.00 FSG
5th Floor	Suite 500	± 568 SF	± 4,607 SF	\$16.00 FSG
5th Floor	Suite 540	± 809 SF	± 4,607 SF	\$16.00 FSG
5th Floor	Suite 545	± 251 SF	± 4,607 SF	\$16.00 FSG
5th Floor	Suite 560	± 2,003 SF	± 4,607 SF	\$16.00 FSG
5th Floor	Suite 575	± 976 SF	± 4,607 SF	\$16.00 FSG
6th Floor	Suite 600	± 3,643 SF	± 9,035 SF	\$16.00 FSG
6th Floor	Suite 608	± 1,372 SF	± 9,035 SF	\$16.00 FSG
6th Floor	Suite 610	± 3,581 SF	± 9,035 SF	\$16.00 FSG
7th Floor	Suite 700	± 3,378 SF	± 9,035 SF	\$16.00 FSG
7th Floor	Suite 750	± 5,616 SF	± 9,035 SF	\$16.00 FSG

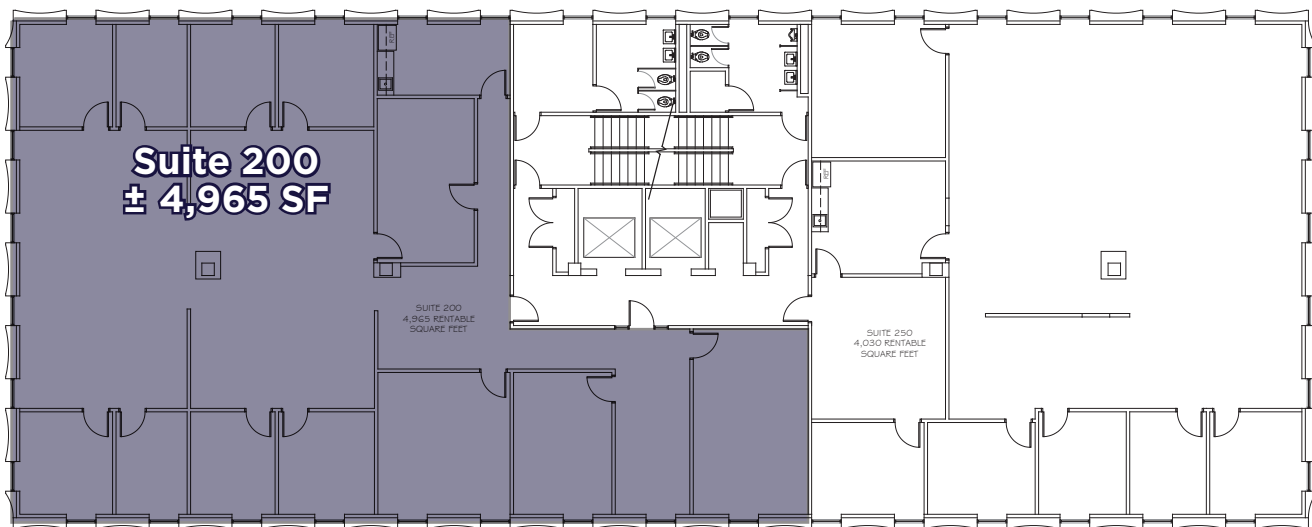


**FLOOR PLANS**

First  
Floor

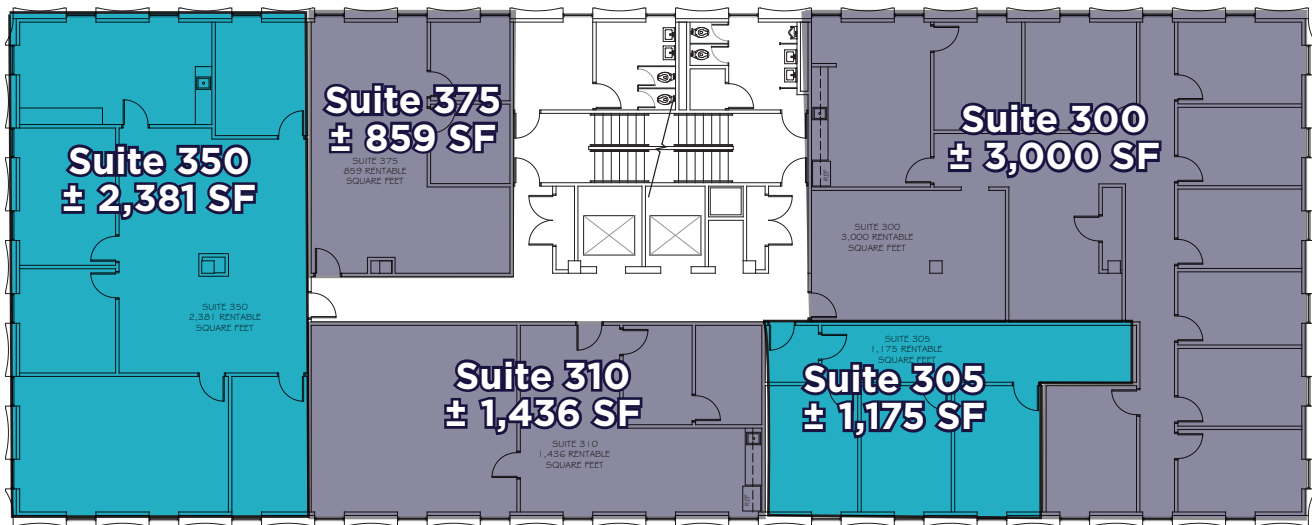


Second  
Floor

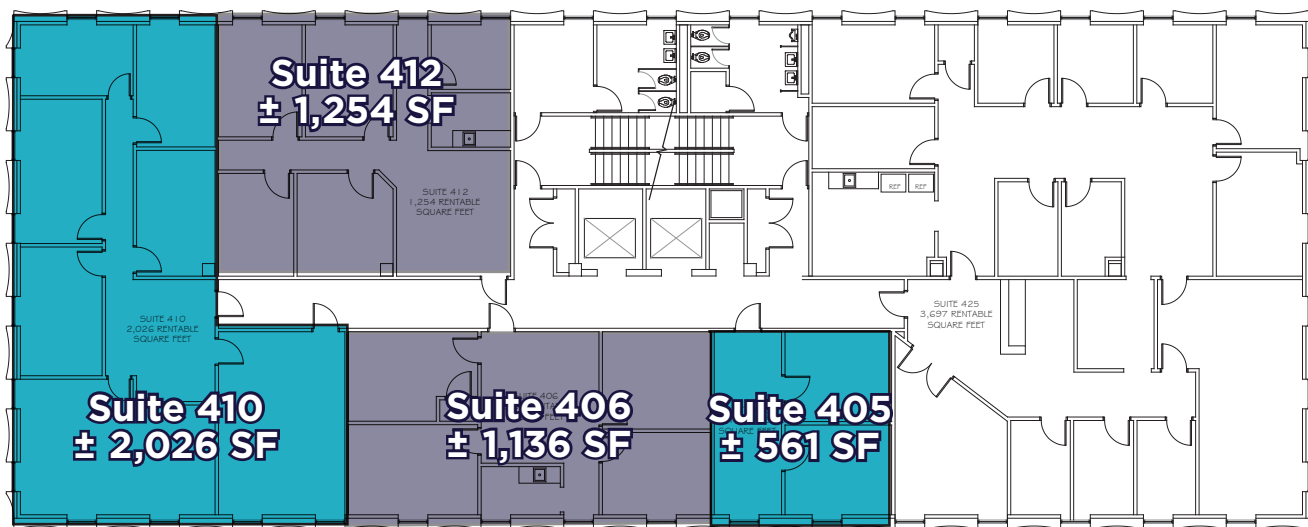


**FLOOR PLANS**

Third Floor

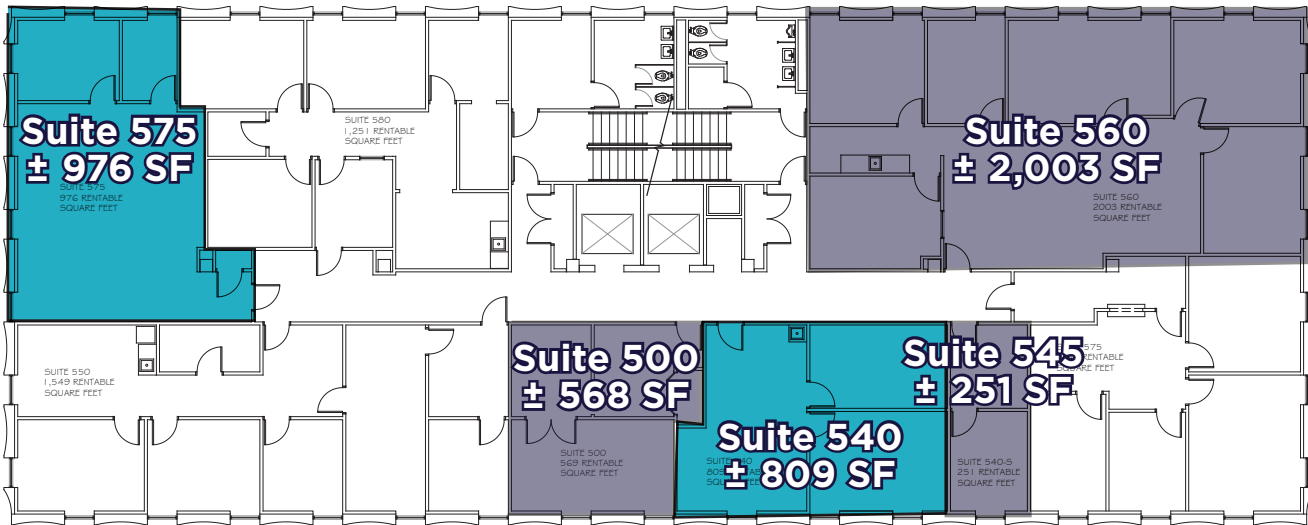


Fourth Floor

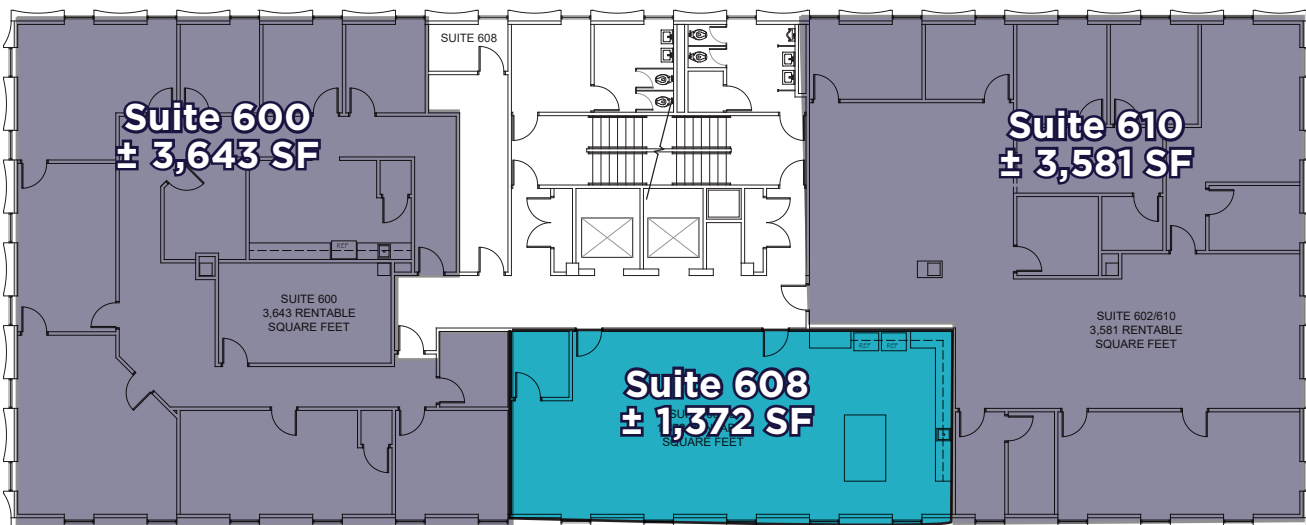


**FLOOR PLANS**

Fifth Floor

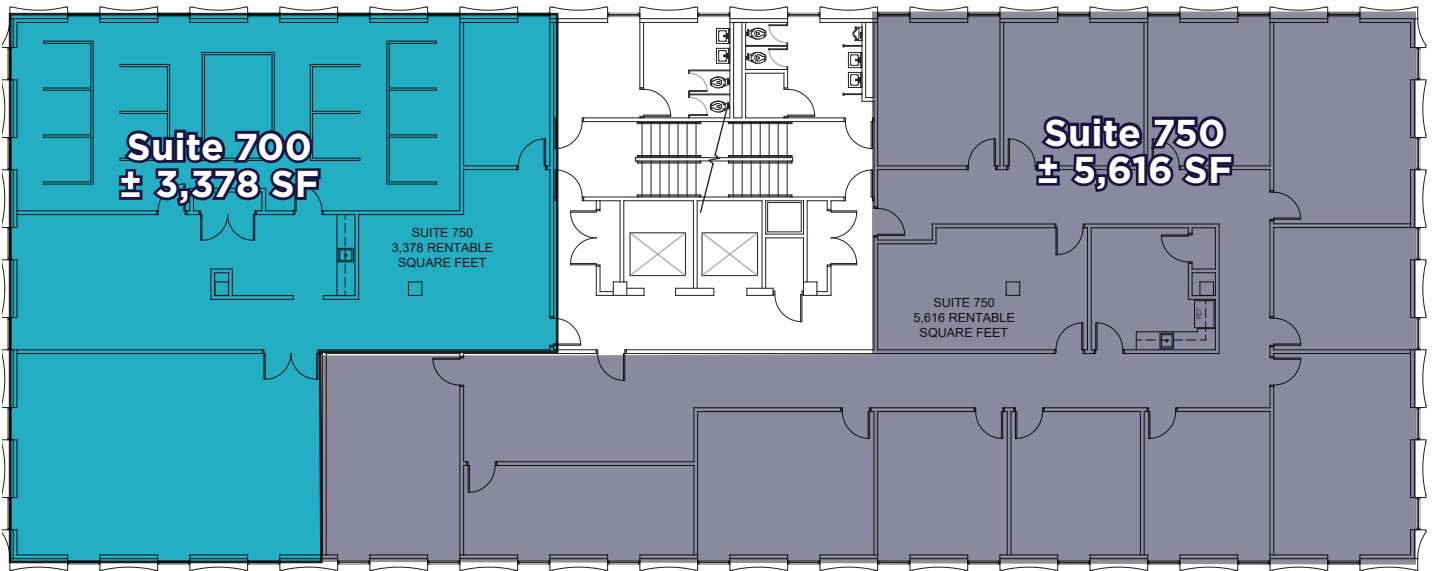


Sixth Floor



**FLOOR PLANS**

Seventh  
Floor



**CONTACT US**

MICAH SHERMAN, CCIM  
**+1 405 488 5548**  
msherman@commercialoklahoma.com

TRAVIS MASON  
**+1 405 249 0655**  
tmason@commercialoklahoma.com

VIVIENNE VOGLER  
**+1 405 570 8595**  
vvogler@commercialoklahoma.com