

# 5895 Memorial Drive

STONE MOUNTAIN · GEORGIA 30083

LEASING PLAN

TWO FLOORS · 10 UNITS

±28,220 SF TOTAL

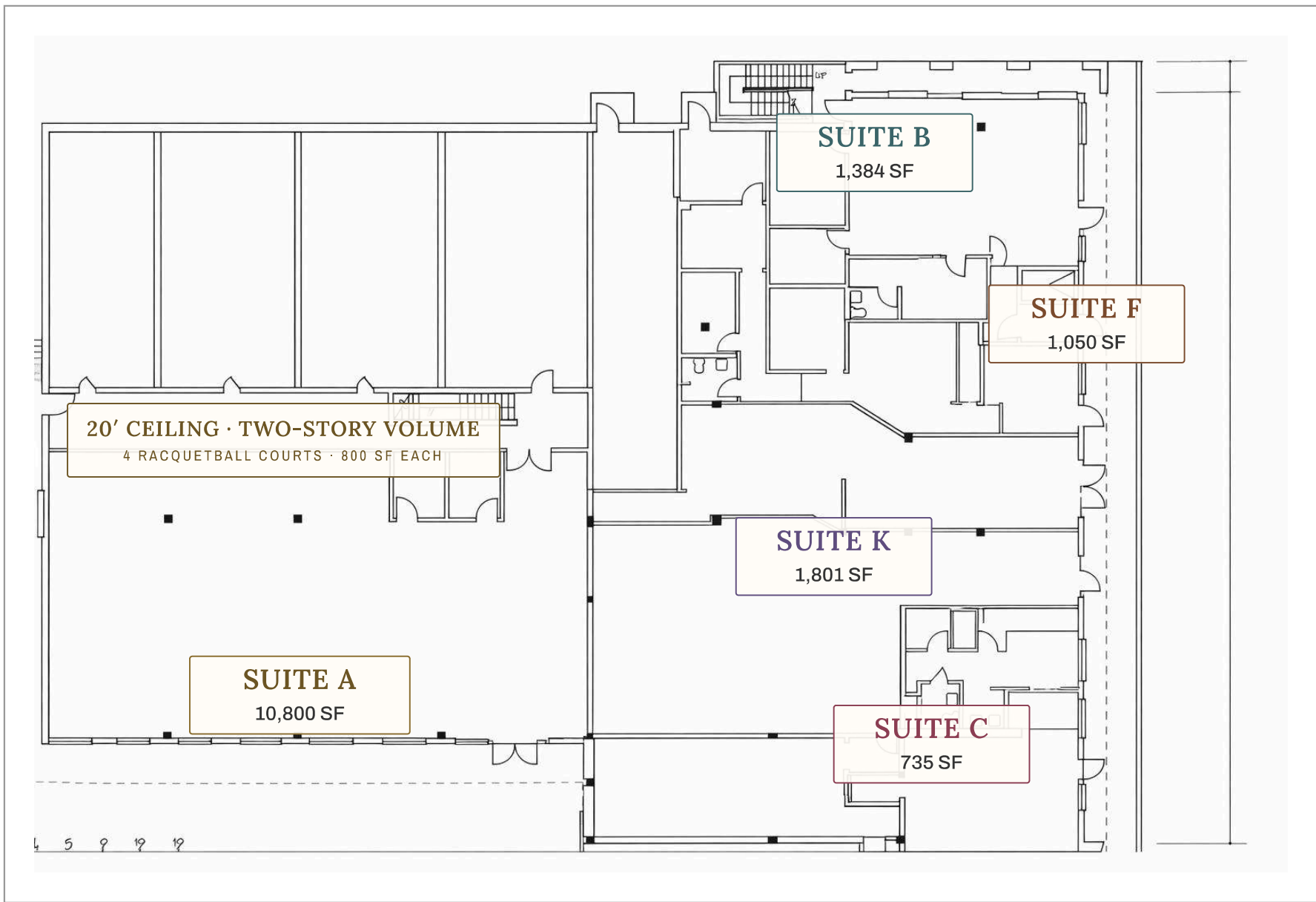
---

---

## Ground Floor

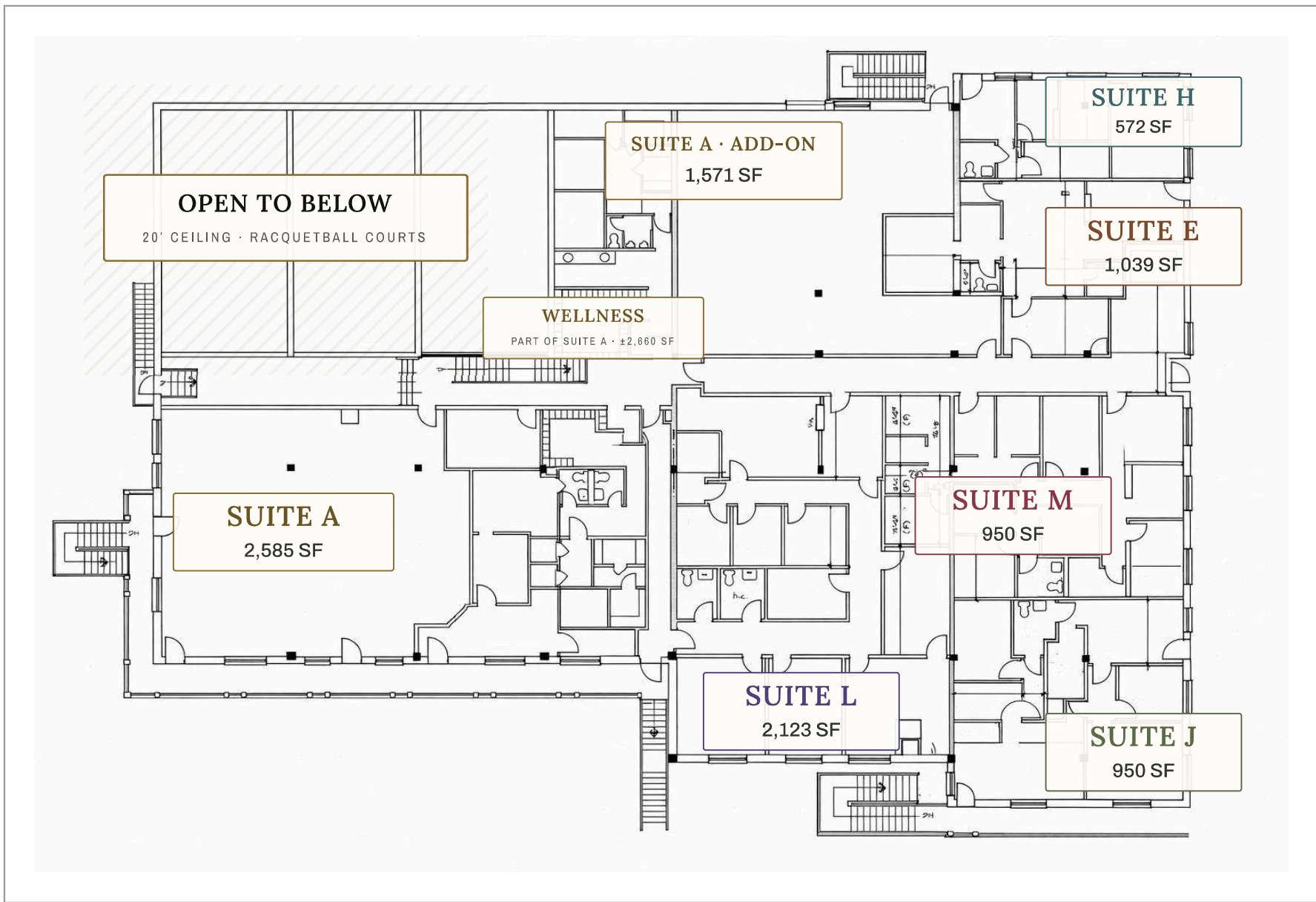
5 UNITS · 15,770 SF

---



## Second Floor

6 UNITS · ±12,450 SF



### Ground Floor

Suite A	Open plate + 4 racquetball courts	10,800 SF
Suite B	—	1,384 SF

### Second Floor

Suite A · main	Below court void	2,585 SF
Suite A · add-on	Combinable	1,571 SF

Suite F	—	1,050 SF
Suite K	Own street entrance	1,801 SF
Suite C	—	735 SF
<b>Total</b>	5 units	<b>15,770 SF</b>

Suite A · wellness	Lockers · steam · sauna · shower	±2,660 SF
Suite L	—	2,123 SF
Suite E	—	1,039 SF
Suite M	—	950 SF
Suite J	—	950 SF
Suite H	—	572 SF
<b>Total</b>	Excludes court void	<b>±12,450 SF</b>

## Contiguous Combinations

### Full Building

±28,220 SF

Single tenant

### Suite A · Both Floors

±17,616 SF

Vertical integration

### Suite A · 2nd Floor

±6,816 SF

Main + add-on + wellness

### Ground Floor

15,770 SF

All 5 units

### Second Floor

±12,450 SF

All 6 units

### Suite A + F + K

13,651 SF

Anchor + east wing

**Coldwell Banker Commercial Metro**  
**Brokers**

AMIT GROVER

(413) 966-1019

AMIT.GROVER@CBCMETROBROKERS.COM

ARTURA THOMAS

(470) 685-9964

ARTURA.THOMAS@CBCMETROBROKERS.COM

5775-D GLENRIDGE DR · BUILDING D · SUITE 100 · ATLANTA,  
GA 30328

SCHEMATIC · NOT TO SCALE