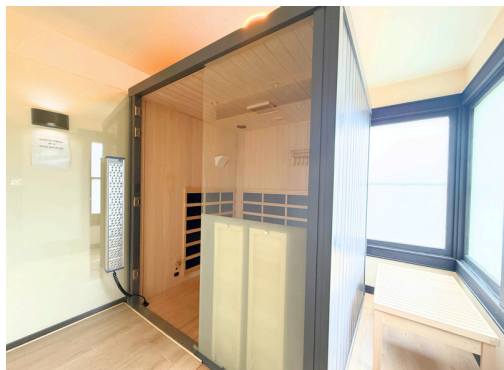
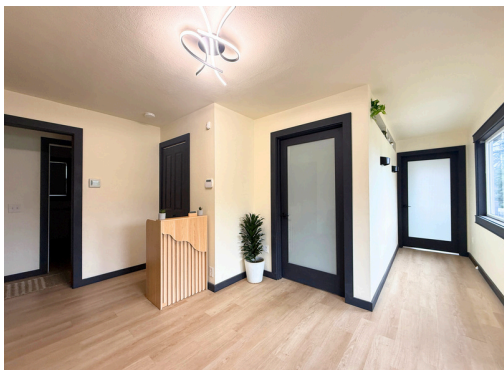


3010 BETHEL RD SE, PORT ORCHARD, WA 98366

FOR LEASE

\$3,500/MO

GROSS LEASE
UTILITIES INCLUDED



FEATURES

✔ **5 Rooms + kitchenette**

✔ **1 restroom**

✔ **1,368 sq. ft.**

Commercial Building Office For Lease

5 office spaces, lobby entrance and kitchenette with storage on 2nd floor with its own parking lot. Monumental sign on high traffic road. Gross Lease, all utilities are included in the monthly rent amount.

CONTACT DETAILS

Ann Tseng

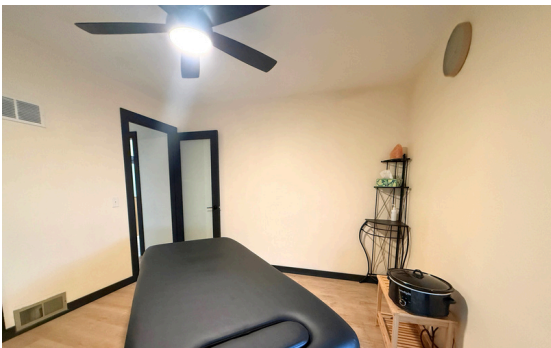
☎ 425-243-9168 (text/call)

✉ AnnTsengRE@gmail.com

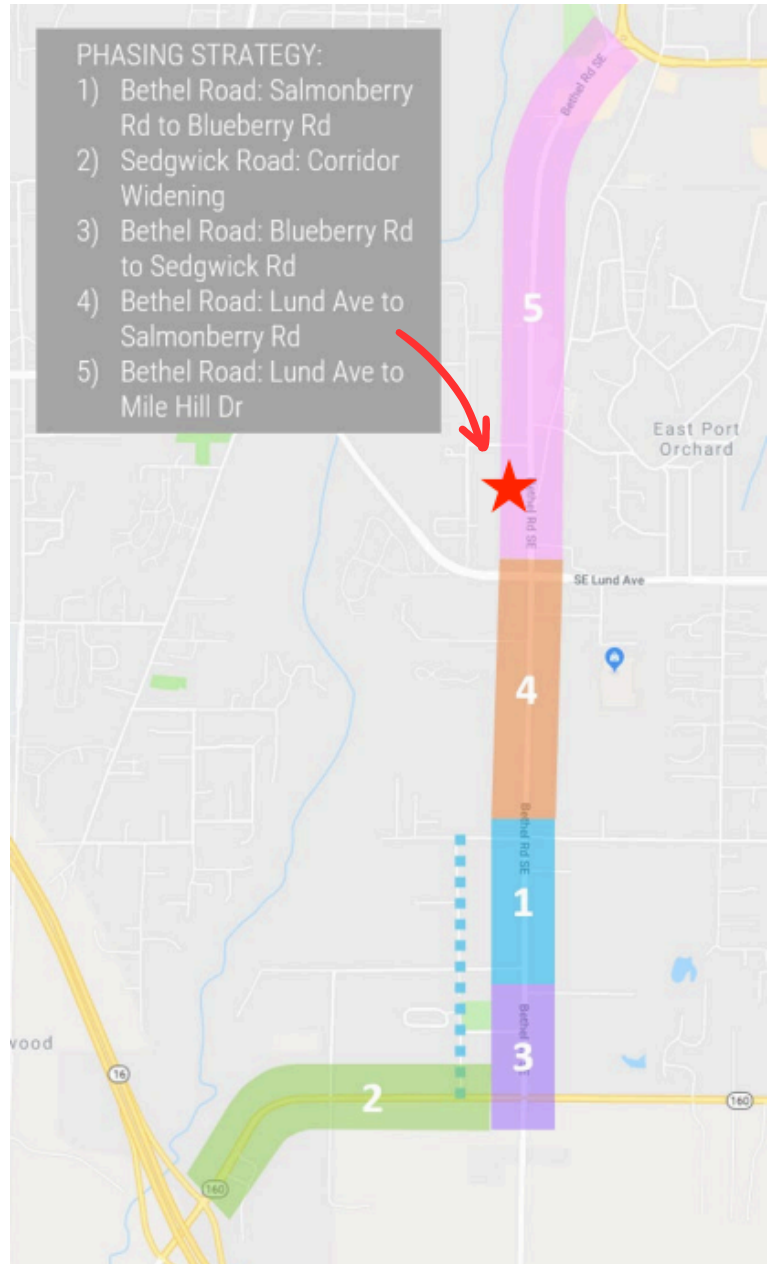
Best Choice
REALTY

PROPERTY HIGHLIGHTS

- ✓ Central location
- ✓ Plenty of parking
- ✓ Highly visible high-traffic exposure
- ✓ Work/Live opportunity
- ✓ Very large yard
- ✓ Multiple storage opportunities on-site



CITY OF PORT ORCHARD PROJECT: BETHEL PHASE 1



Well-located and attractive commercial building on busy Bethel Corridor in Port Orchard. Located close to services and public transportation. Minutes from Highway 16 or waterfront. All utilities available including electricity, public water, sanitary sewer, and natural gas.

CONTACT DETAILS

Ann Tseng

☎ 425-243-9168 (text/call)

✉ AnnTsengRE@gmail.com

Best
Choice
REALTY