

For Lease | Ground Lease | Redevelopment

CBRE

# 5955 E Broadway Blvd

±6,105 SF Freestanding PAD Building on ±32,234 SF Lot  
Across from Park Place Mall

Tucson, AZ 85711



Retail

5955 E Broadway Blvd  
Tucson, AZ 85711

For Lease | Ground Lease | Redevelopment



±6,105 SF

Building Size, Freestanding Building

±32,234 SF

Lot Size

Contact Agent

Lease Rate

## Property Overview

Year Built	2007
Parking	38 spaces
Zoning	C-1, City of Tucson

- + High Profile Freestanding Building
- + Excellent Access and Visibility
- + Direct Frontage on Tucson's Busiest East/West Arterial
- + Directly Across from 1.1M SF Park Place Mall, the Busiest Mall in Tucson with Over 7M Annual Visitors



44,615 VPD

Broadway Blvd (2024)

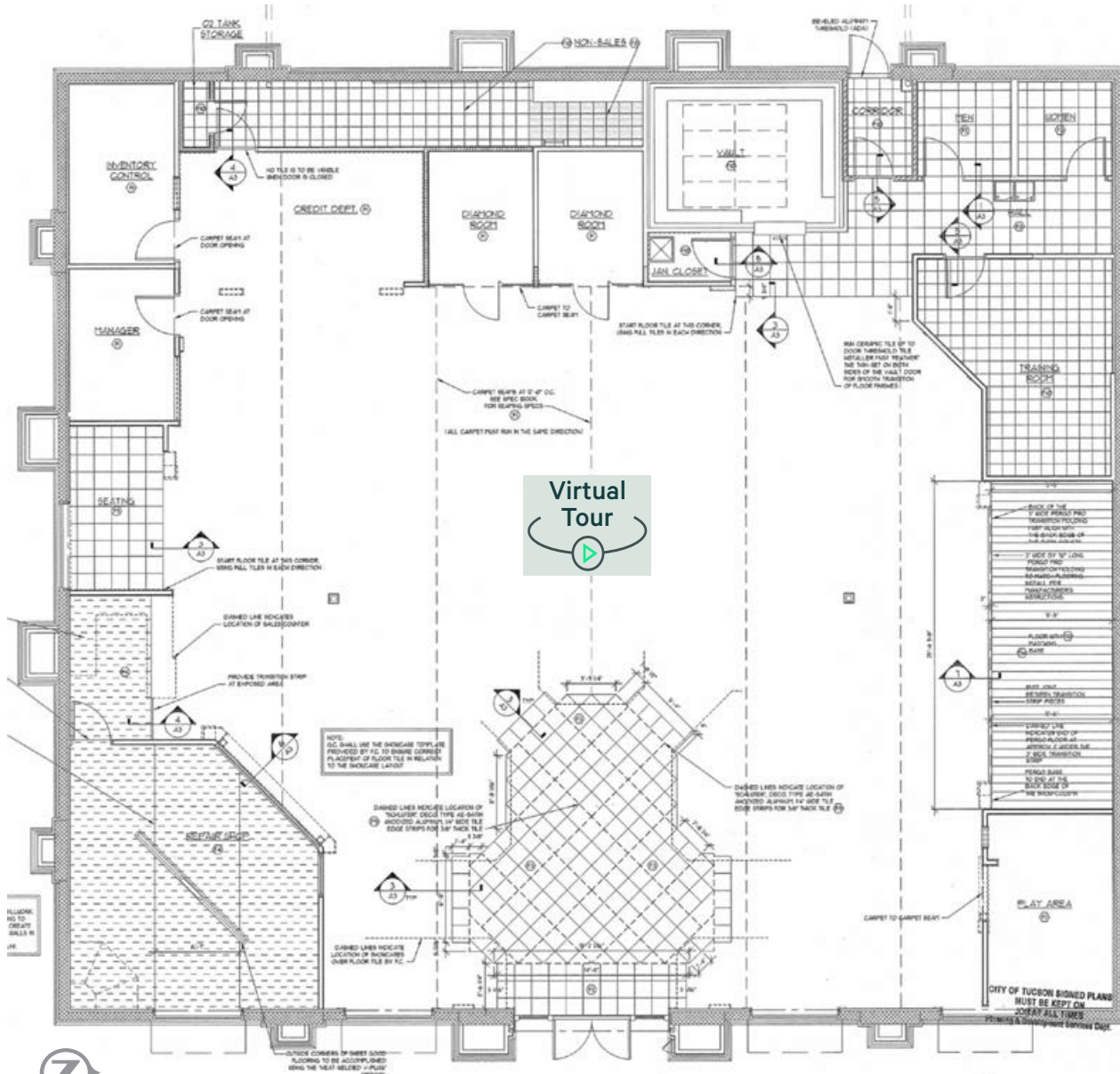
42,771 VPD

Wilmot Rd (2024)

**CBRE**

5955 E Broadway Blvd  
Tucson, AZ 85711

For Lease | Ground Lease | Redevelopment



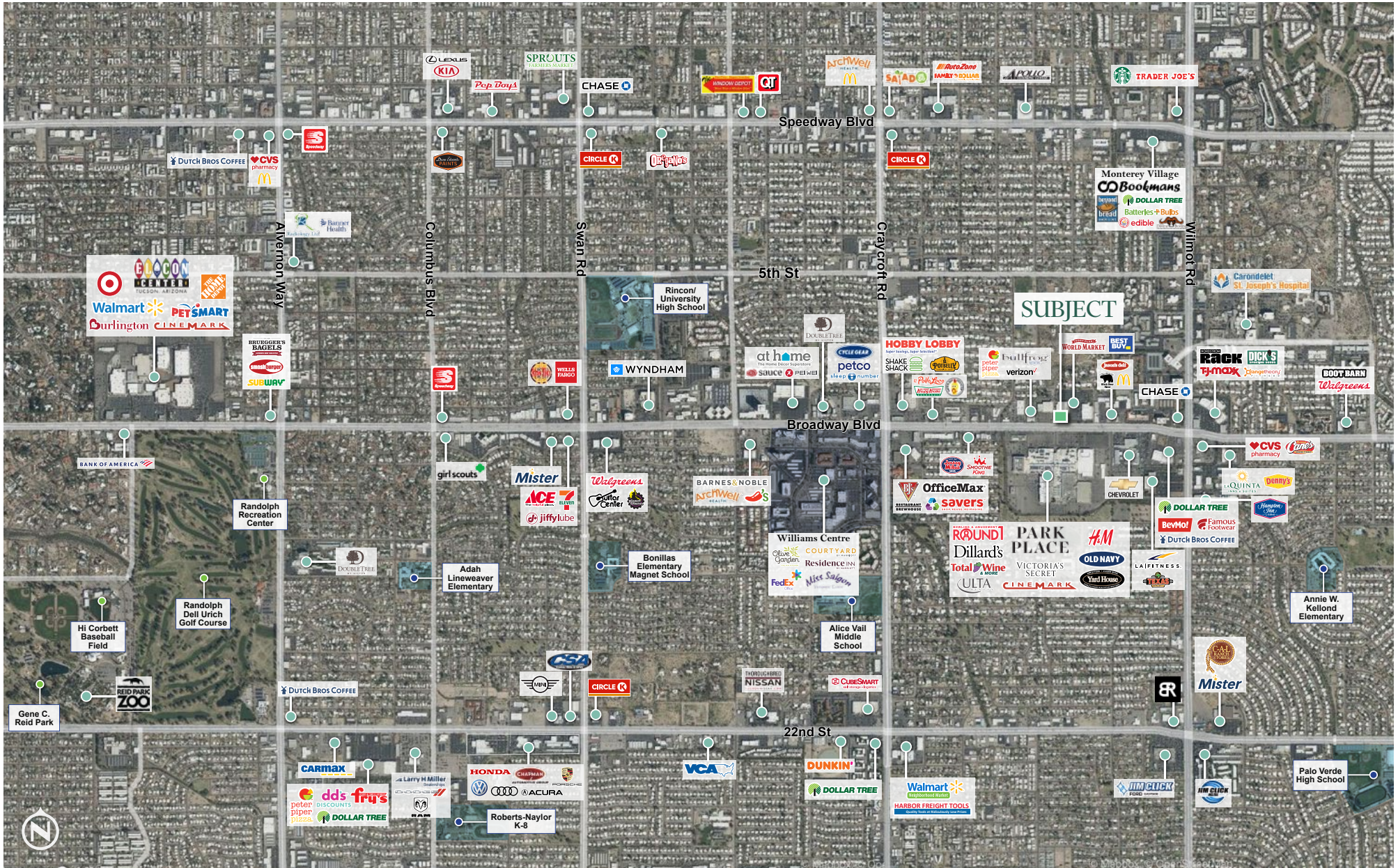
Not to Scale





5955 E Broadway Blvd  
Tucson, AZ 85711

For Lease | Ground Lease | Redevelopment





5955 E Broadway Blvd  
Tucson, AZ 85711

For Lease | Ground Lease | Redevelopment



## Contact Us

**Jesse Peron**  
Vice President  
+1 520 323 5130  
[jesse.peron@cbre.com](mailto:jesse.peron@cbre.com)

**Shannon Murphy**  
First Vice President  
+1 520 323 5109  
[shannon.murphy2@cbre.com](mailto:shannon.murphy2@cbre.com)

© 2026 CBRE, Inc. All rights reserved. This information has been obtained from sources believed reliable but has not been verified for accuracy or completeness. CBRE, Inc. makes no guarantee, representation or warranty and accepts no responsibility or liability as to the accuracy, completeness, or reliability of the information contained herein. You should conduct a careful, independent investigation of the property and verify all information. Any reliance on this information is solely at your own risk. CBRE and the CBRE logo are service marks of CBRE, Inc. All other marks displayed on this document are the property of their respective owners, and the use of such marks does not imply any affiliation with or endorsement of CBRE. Photos herein are the property of their respective owners. Use of these images without the express written consent of the owner is prohibited.