

# goose island loft office building

AVAILABLE FOR LEASE | 1,500 - 8,434 RSF

# 1000

NORTH HALSTED



## LEAD LEASING ADVISOR

**DAVE SCHRAUFNAGEL**

Senior Director

C +1 773 430 6406

Dave@Greenstone-Partners.com

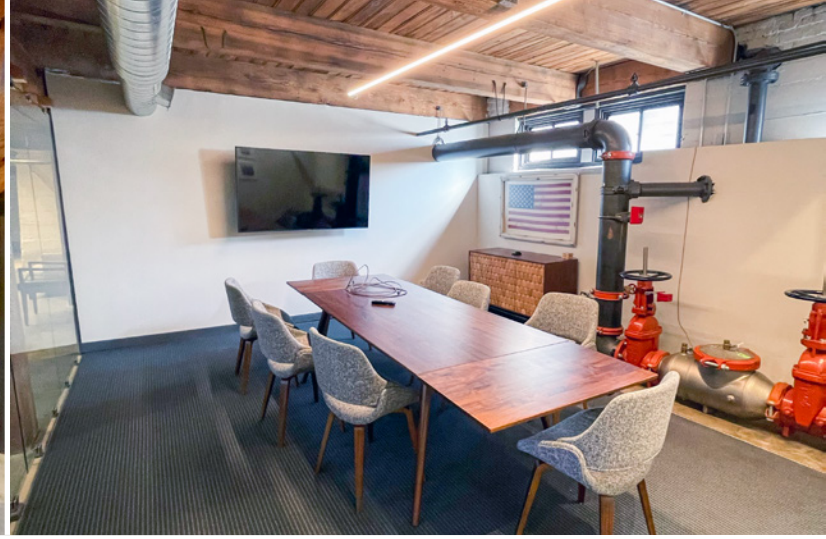


## 1000 N. HALSTED STREET, CHICAGO, IL

Suites	002	2,000 RSF	\$12.00 / RSF, MG
	102	6,434 RSF	\$18.00 / RSF, MG
	202A	1,500 RSF	\$25.00 / RSF, MG
	204	1,890 RSF	\$23.00 / RSF, MG
	205	4,108 RSF	\$25.00 / RSF, MG

Location

Chicago - Goose Island



**BOUTIQUE LOFT  
OFFICE BUILDING**



**PRIME GOOSE  
ISLAND LOCATION**



**STEPS FROM  
WHOLE FOODS,  
MARIANO'S &  
APPLE STORE**



**ADJACENT TO LINCOLN  
PARK, BUCKTOWN &  
FULTON MARKET**



**SUITE 002 CAN  
COMBINE WITH SUITE  
102 (8,434 RSF)**

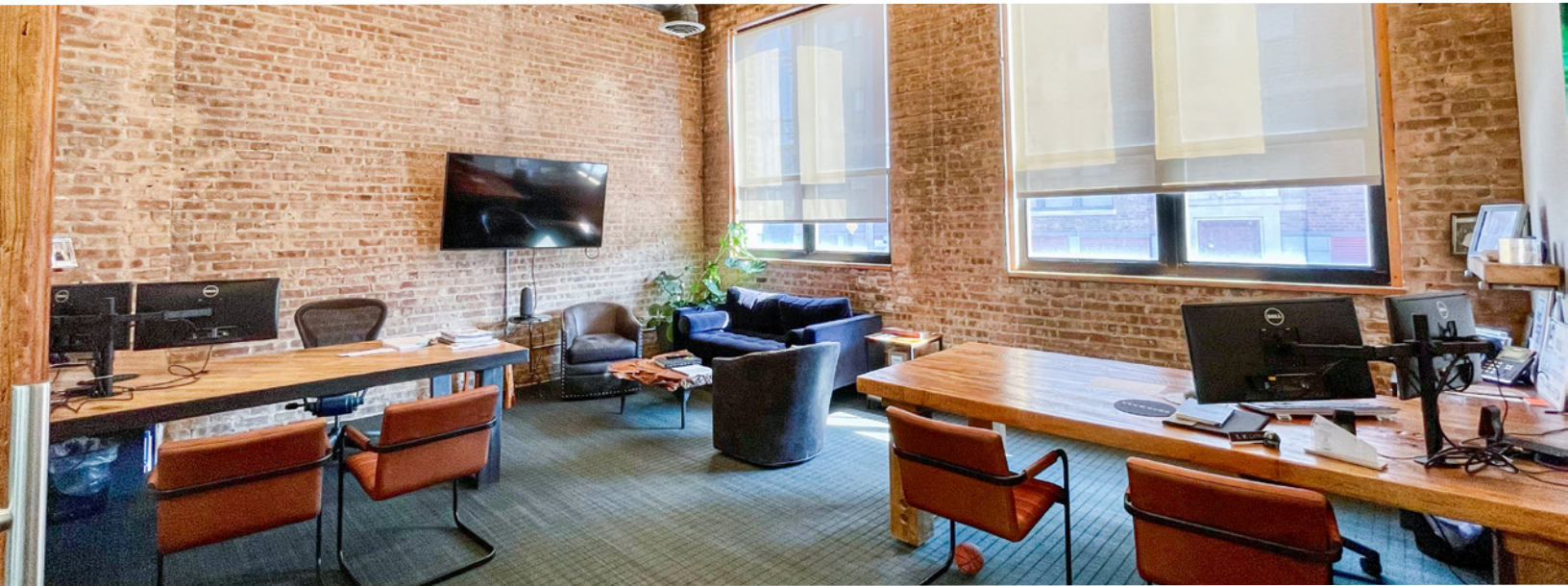
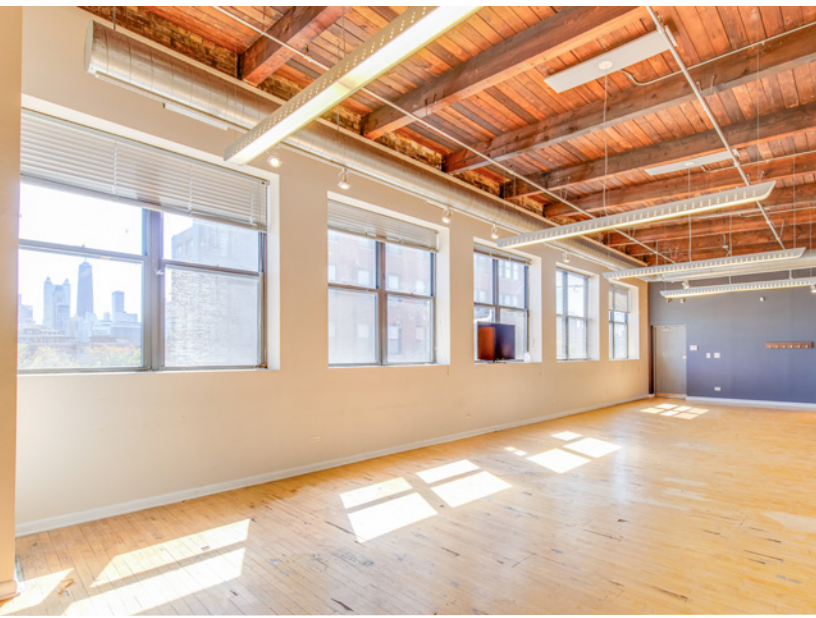


**RECENTLY  
REMODELED WITH  
SANDBLASTED  
BRICK & TIMBER**



**HIGH CEILINGS WITH  
GREAT NATURAL  
LIGHTSANDBLASTED  
BRICK & TIMBER**

# INTERIORS





# 1000

— NORTH HALSTED —



## LEAD LEASING ADVISOR

**DAVE SCHRAUFNAGEL**

Senior Director

C +1 773 430 6406

[Dave@Greenstone-Partners.com](mailto:Dave@Greenstone-Partners.com)



© Copyright 2026 Greenstone Partners. Information herein has been obtained from sources believed reliable. While we do not doubt its accuracy, we have not verified it and make no guarantee, warranty or representation about it. It is your responsibility to independently confirm its accuracy and completeness. Any projections, opinions, assumptions or estimates used are for example only and do not represent the current or future performance of the market. This information is designed exclusively for use by Greenstone Partners' clients, and cannot be reproduced without prior written permission of Greenstone Partners.