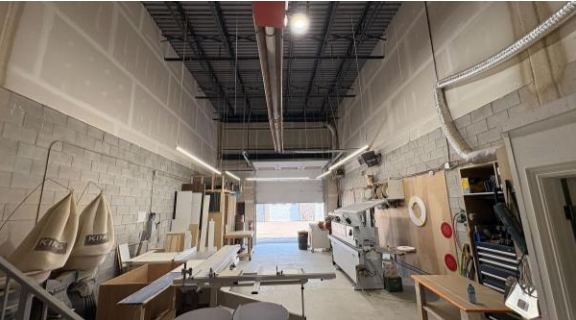


INDUSTRIAL SPACE FOR LEASE

5250 Solar Dr #28,
Mississauga



COMMENTS

Modern industrial condominium unit located in the highly desirable Airport Corporate Centre. Features a 12' x 12' drive in door and clear ceiling height of approximately 24', offering excellent functionality for a variety of industrial and warehouse users. Situated in a newer style industrial condo building with a professional corporate image. Prime Mississauga location with quick access to major highways and Toronto Pearson International Airport, providing outstanding connectivity across the GTA.

DETAILS

Total Size: 1980 Sq. Ft.

Office Area: 198 Sq. Ft.

Industrial Area: 1782 Sq. Ft.

Retail Area: 0 Sq. Ft.

Zoning: E1

List Rate: \$18.50 Sq Ft Net

TMI: \$6.0

Clear Height: 24 0

Loading: 1 Drive-In Level Door

Sprinklers: Yes

Heat: Gas Forced Air Open

Available: 08/01/2026



Jason Gilbert

Broker

Cell: (416) 419-2115

jasongilbert@induspacerealty.com

www.induspacerealty.com



John S. Gilbert

Broker of Record/Owner

Cell: (416) 828-5547

jgilbert@induspacerealty.com

5800 Ambler Drive, Suite 210, Mississauga, Ontario L4W 4J4 | T:(905) 277 4747

