



OFFERING SUMMARY

LEASE RATE:	\$13 - 18 SF/yr (NNN)
NUMBER OF UNITS:	32
AVAILABLE SF:	525 - 2,250 SF
LOT SIZE:	3.8 Acres
BUILDING SIZE:	39,600 SF

- Available Units:
- 101C - 1,200 SF Front Retail Unit
- 101DJ - 2,250 SF Front Retail Space with Flex Space.
- 103J - 1,050 SF - Hood/Grease Trap with Access to a 12 Foot Roll Up Door
- 102D - 1,050 SF Office/Warehouse with Access to a Roll Up Door
- 102B - 525 SF Office Only
- 103H - 1,050 SF Office with Access to a 12 Foot Roll Up Door
- 103D - 1,050 SF Office/Warehouse

PROPERTY DESCRIPTION

1,050-2,250 SF Office/Flex Space For Lease

Air Conditioned

Located in a Clean, Well-Kept Industrial Park

Plenty of Parking

East of the Beville Rd and Nova Rd Intersection in South Daytona

Landlord is willing to Convert Spaces to Add Warehouse Space.

\$5.97/SF Pass Through Expenses

Carl W. Lentz IV, MBA, CCIM

Managing Director

O: 386.566.3726

carl.lentz@svn.com

FL #BK3068067



1,050 SF Flex Spaces

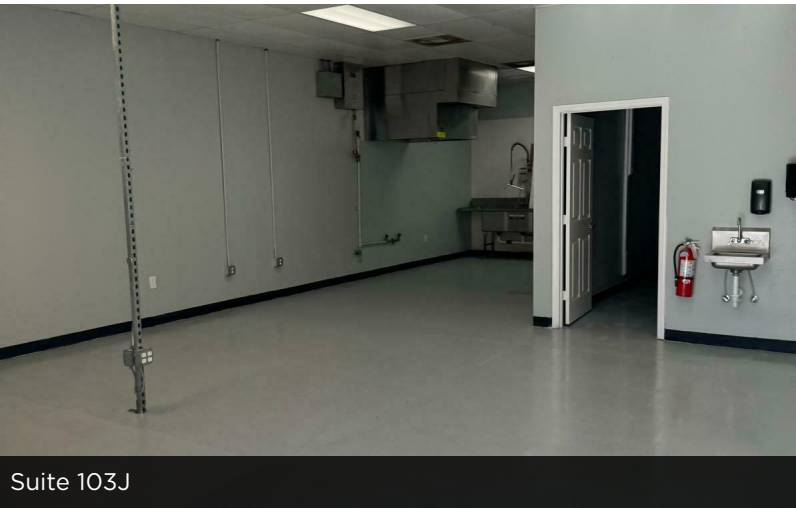
933 Beville Road
South Daytona, FL 32119



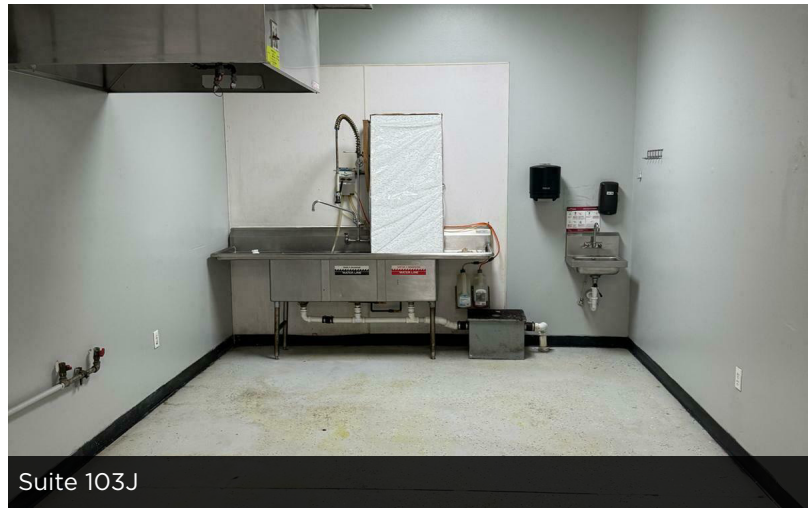
Suite 102D



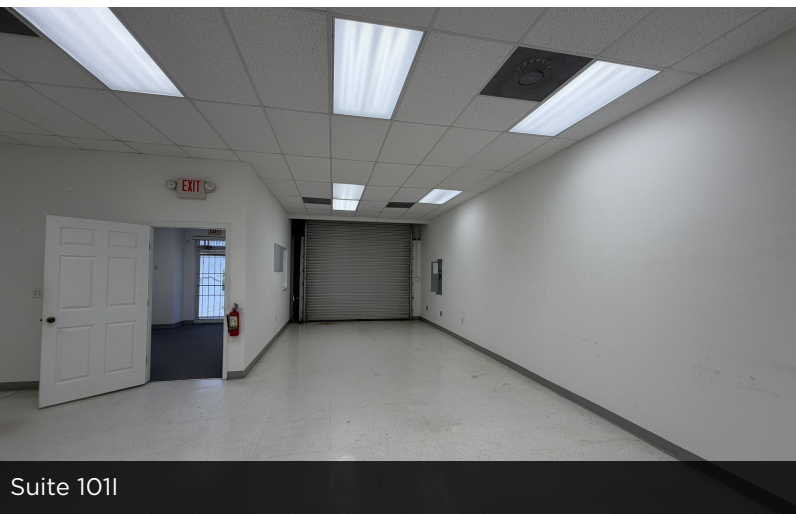
Suite 102D



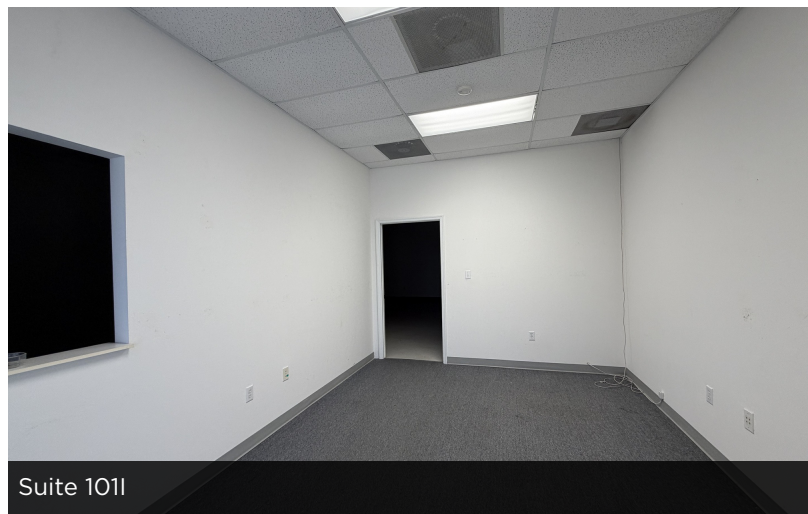
Suite 103J



Suite 103J



Suite 1011



Suite 1011



Carl W. Lentz IV, MBA, CCIM
Managing Director
O: 386.566.3726
carl.lentz@svn.com
FL #BK3068067

1,200 SF Front Retail Space

933 Beville Road, Suite 101C

South Daytona, FL 32119



Carl W. Lentz IV, MBA, CCIM
Managing Director
O: 386.566.3726
carl.lentz@svn.com
FL #BK3068067



2,250 SF Retail/Flex Space

933 Beville Road, 102EF

South Daytona, FL 32119

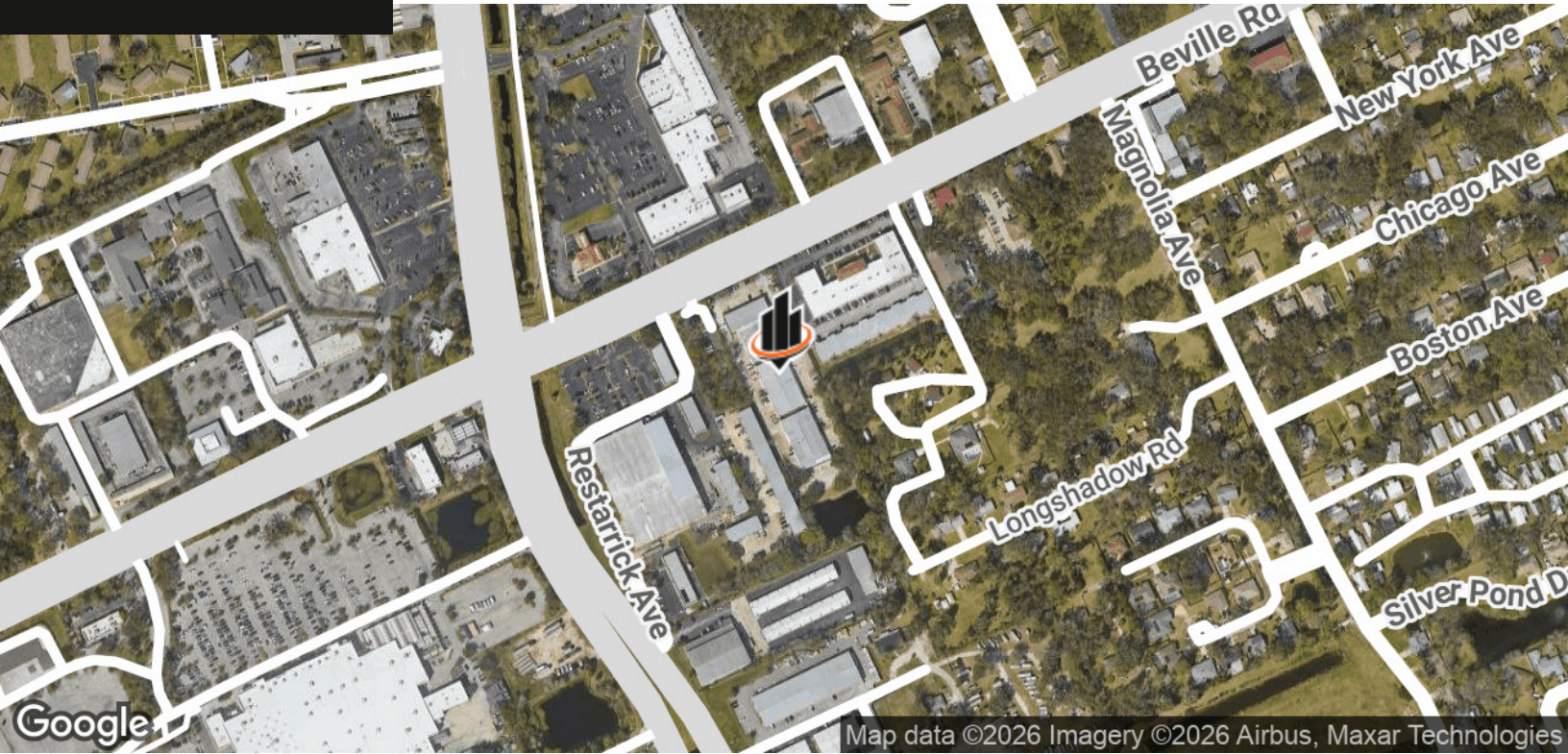


Carl W. Lentz IV, MBA, CCIM
Managing Director
O: 386.566.3726
carl.lentz@svn.com
FL #BK3068067



For Lease

933 Beville Road
South Daytona, FL 32119



Carl W. Lentz IV, MBA, CCIM
Managing Director
O: 386.566.3726
carl.lentz@svn.com
FL #BK3068067

