

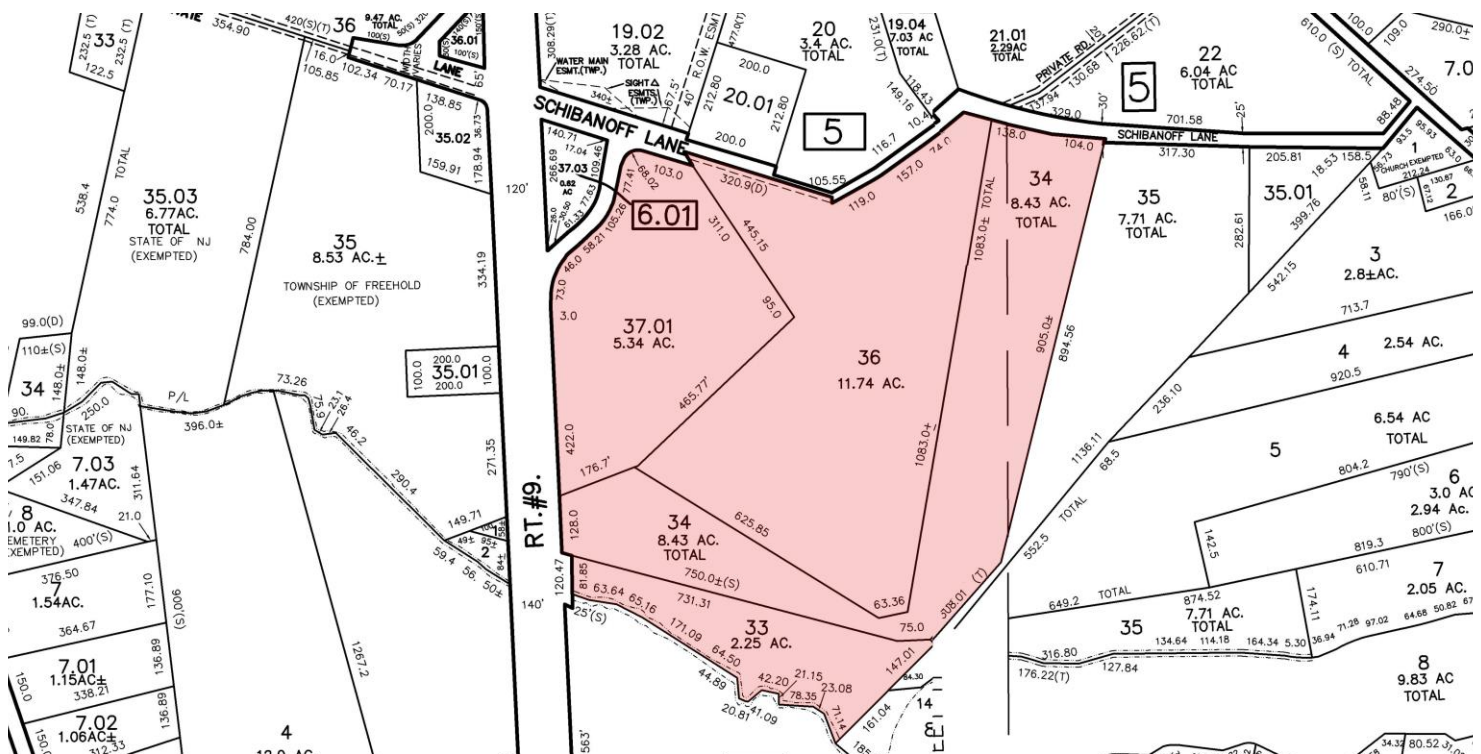
Specifications

- ±27.76 Acres
- Block 6, Lots 33, 34, 36 and 37.01
- LOT ACREAGE
- CMX-3A (Corporate Multi-Use Development Zone – 3/Automobile)
- ZONING
- 856.47' Frontage on Route 9
- FRONTAGE
- 4 Ingress/Egress Off of Route 9
- 2 Ingress/Egress Off of Schibanoff Ln
- ACCESS
- 58,786 on Route 9
- DAILY TRAFFIC COUNT
- \$86,943.86
- TAXES (2024)
- 2.7 Miles to Route 33
- 6.8 Miles to Route 18
- 8.5 Miles to I-195
- ACCESSIBILITY

For additional property information or to arrange an inspection, please contact the exclusive brokers:

Scott G. Savastano
Executive Director
 973.379.6644 x 147
 SGSavastano@blauberg.com

Nicholas A. Savastano
Associate
 973.379.6644 x 234
 NSavastano@blauberg.com



For additional property information or to arrange an inspection, please contact the exclusive brokers:

Scott G. Savastano
 Executive Director
 973.379.6644 x 147
 SGSavastano@blauberg.com

Nicholas A. Savastano
 Associate
 973.379.6644 x 234
 NSavastano@blauberg.com



5 MILES

- Total Population: 115,950
- Households: 41,382
- Median Household Income: \$147,250
- Average Household Size: 2.8
- Transportation to Work: 58,940
- Labor Force: 94,690

10 MILES

- Total Population: 324,941
- Households: 118,637
- Median Household Income: \$141,723
- Average Household Size: 2.7
- Transportation to Work: 161,950
- Labor Force: 266,220

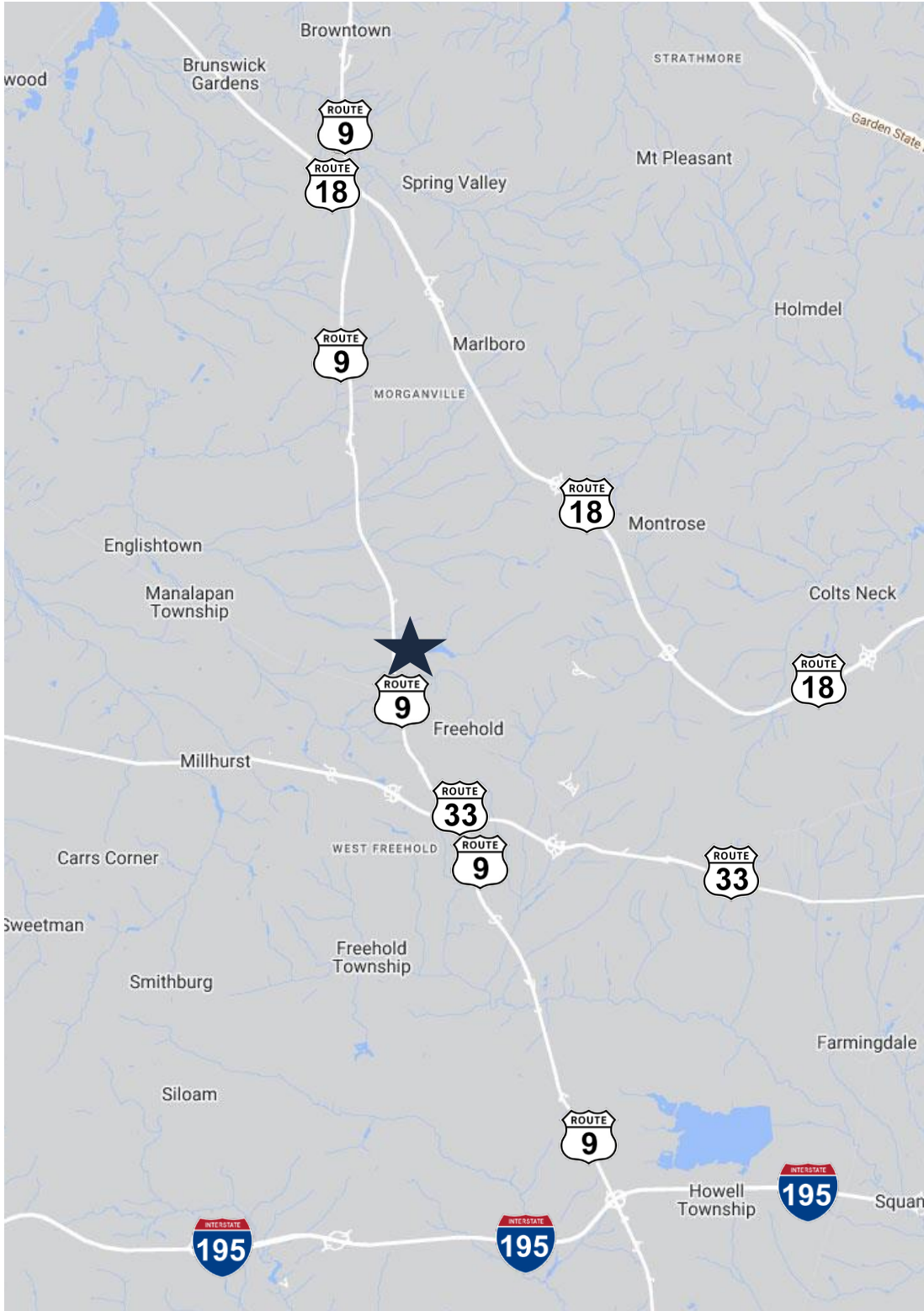
15 MILES

- Total Population: 981,988
- Households: 351,099
- Median Household Income: \$128,636
- Average Household Size: 2.8
- Transportation to Work: 491,167
- Labor Force: 782,735

For additional property information or to arrange an inspection, please contact the exclusive brokers:

Scott G. Savastano
Executive Director
973.379.6644 x 147
SGSavastano@blauberg.com

Nicholas A. Savastano
Associate
973.379.6644 x 234
NSavastano@blauberg.com



ACCESSIBILITY



2.7 MI
Route 33



6.8 MI
Route 18



8.5 MI
I-195

For additional property information or to arrange an inspection, please contact the exclusive brokers:

Scott G. Savastano
Executive Director
973.379.6644 x 147
SGSavastano@blauberg.com

Nicholas A. Savastano
Associate
973.379.6644 x 234
NSavastano@blauberg.com