

8200 GRATIOT AVENUE
DETROIT, MICHIGAN



**SIGNATURE
ASSOCIATES**
KNOW SIGNATURE | KNOW RESULTS

RETAIL FOR SALE
1,935 Square Feet Available



PROPERTY FEATURES

- 1,935 square feet available
- 10' clear height
- Zoned B4
- Built in 1970
- Entire city block
- Sale Price: \$275,000 (\$142.12/sq. ft.)



For more information, please contact:

JOE STACK
(248) 359 0615
jstack@signatureassociates.com

CHRIS MONSOUR
(248) 948 0107
cmonsour@signatureassociates.com

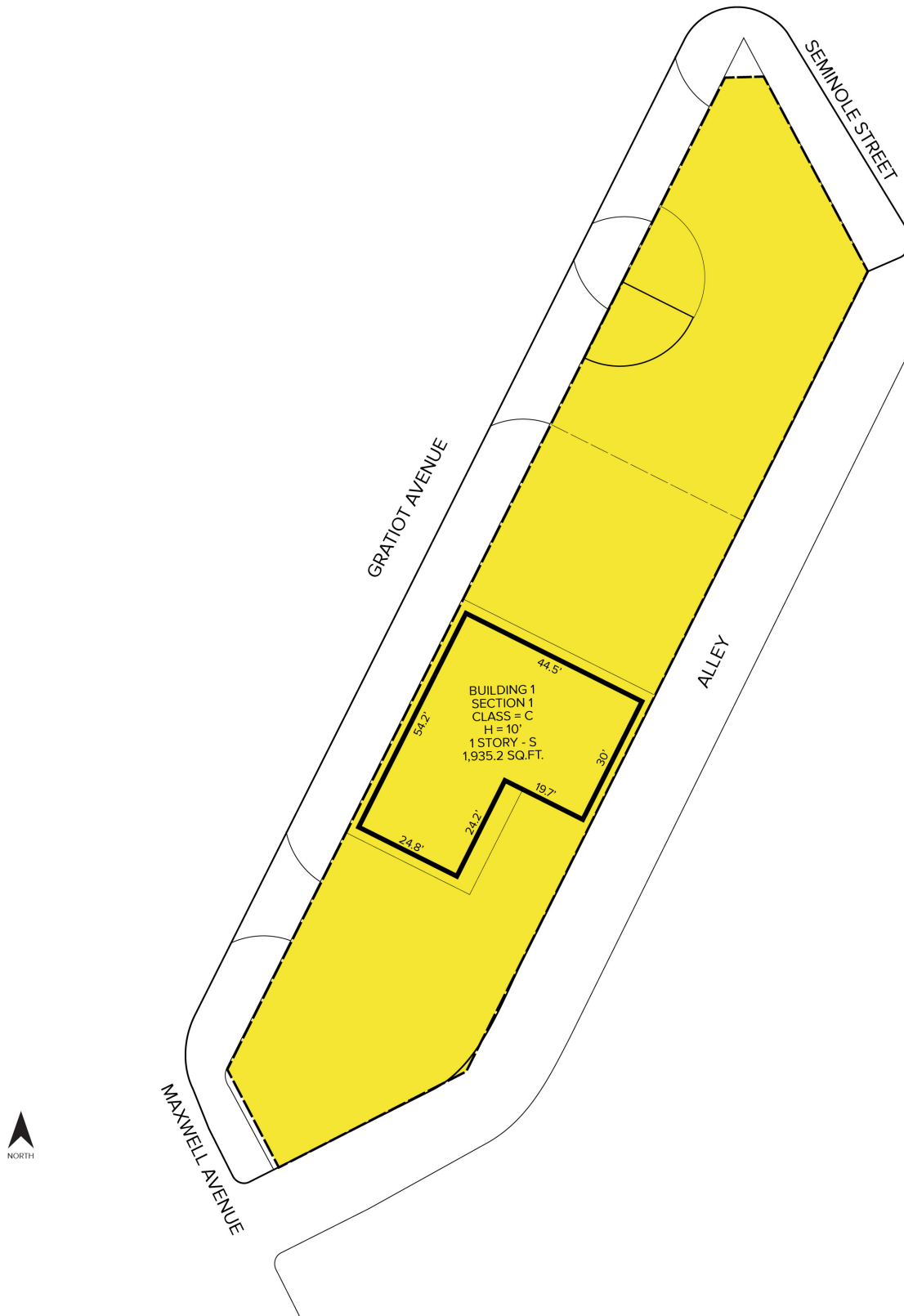
SIGNATURE ASSOCIATES
One Towne Square, Suite 1200
Southfield, MI 48076
www.signatureassociates.com

8200 Gratiot Avenue – Detroit, Michigan

Retail For Sale

1,935
Square Feet
AVAILABLE

Site Plan



For more information, please contact:

JOE STACK
(248) 359 0615
jstack@signatureassociates.com

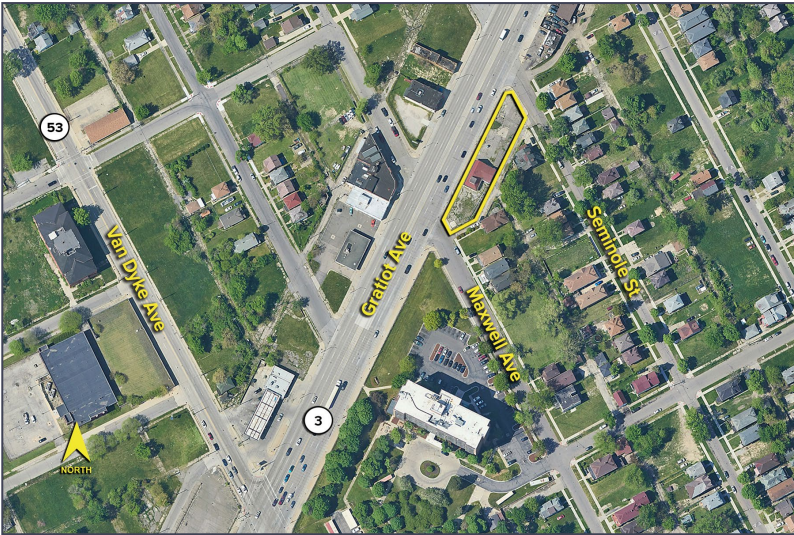
CHRIS MONSOUR
(248) 948 0107
cmonsour@signatureassociates.com

SIGNATURE ASSOCIATES
One Towne Square, Suite 1200
Southfield, MI 48076
www.signatureassociates.com

8200 Gratiot Avenue – Detroit, Michigan

Retail For Sale

1,935
Square Feet
AVAILABLE

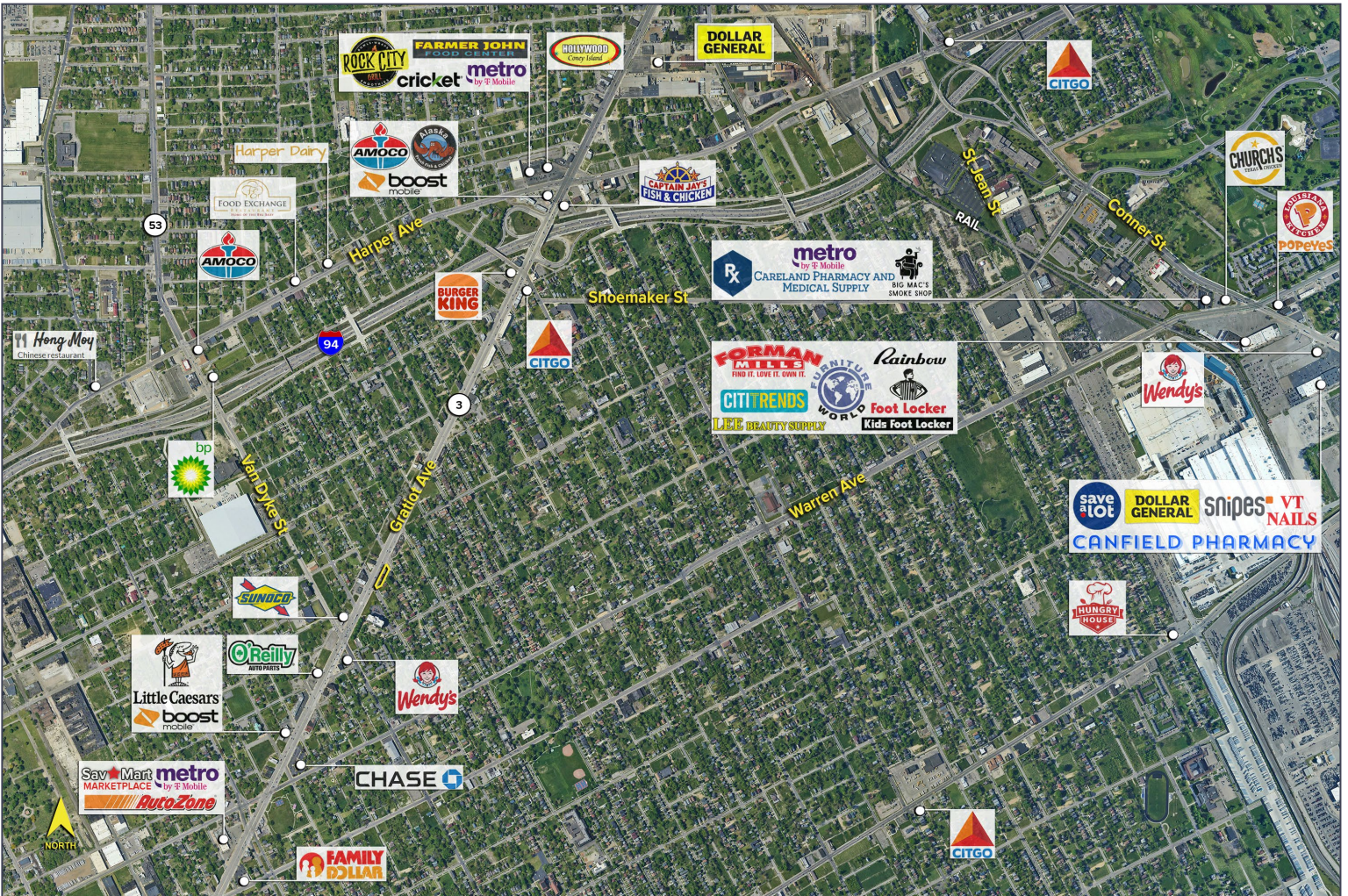


DEMOGRAPHICS

	POPULATION	MED. HH INCOME
1 MILE	9,971	\$35,790
3 MILE	107,274	\$42,279
5 MILE	301,508	\$48,768

TRAFFIC COUNTS (TWO-WAY)

36,275	Gratiot Ave. N. of Van Dyke Ave.
36,247	Gratiot Ave. S. of Van Dyke Ave.
12,164	Van Dyke Ave. SE of Gratiot Ave.
10,854	Van Dyke Ave. NW of Gratiot Ave.



For more information, please contact:

JOE STACK
(248) 359 0615
jstack@signatureassociates.com

CHRIS MONSOUR
(248) 948 0107
cmonsour@signatureassociates.com

SIGNATURE ASSOCIATES
One Towne Square, Suite 1200
Southfield, MI 48076
www.signatureassociates.com