

FOR LEASE



CRESCENT LAKESIDE II

1255 Crescent Green | Cary, NC 27518



CAPITAL
ASSOCIATES®

CRESCENT LAKESIDE II

1255 Crescent Green | Cary, NC 27518

PROPERTY TYPE	Office
BUILDING SIZE	146,442 SF
SPACE AVAILABLE	
Suite 100	3,979 SF
Suite 116	1,971 SF
Suite 210	1,910 SF
Suite 220	2,445 SF
LEASING RATE	\$30.25/SF
LEASE TYPE	Full Service
YEAR BUILT	2008
COUNTY	Wake
LOCATION	Cary, NC
FLOORS	4
PARKING	772 total parking spaces for Crescent Lakeside I & II



BRET MULLER
919.523.4200
bmuller@capitalassociates.com

WES JOHNSON
919.422.4853
wjohnson@capitalassociates.com



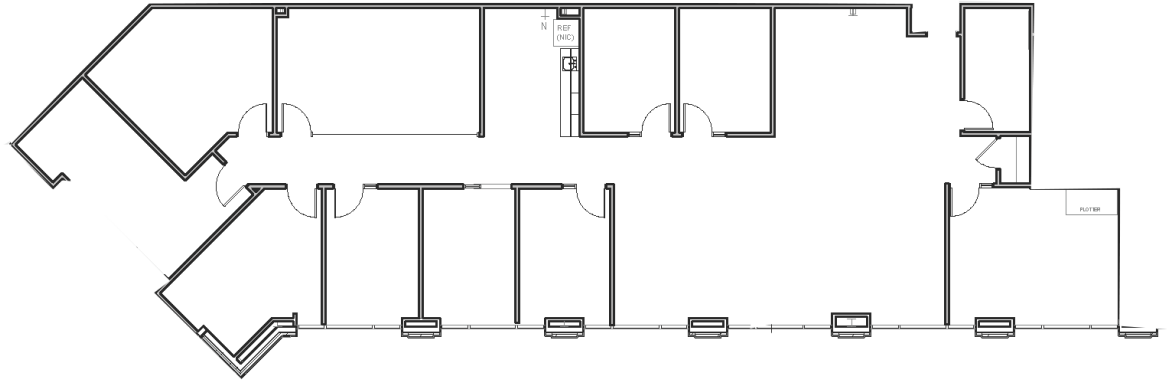
CRESCENT LAKESIDE II

1255 Crescent Green | Cary, NC 27518

AVAILABLE

First Floor
Suite 100

3,979 SF



BRET MULLER

919.523.4200

bmuller@capitalassociates.com

WES JOHNSON

919.422.4853

wjohnson@capitalassociates.com



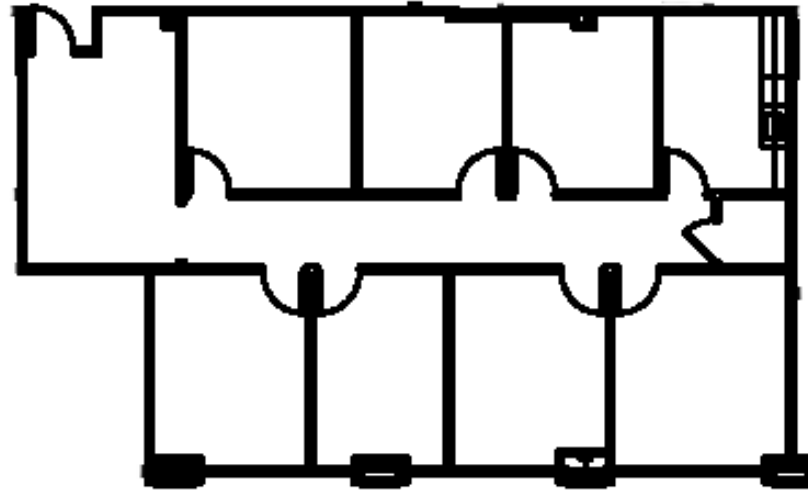
CRESCENT LAKESIDE II

1255 Crescent Green | Cary, NC 27518

AVAILABLE
October 2026

First Floor
Suite 116

1,971 SF



BRET MULLER
919.523.4200
bmuller@capitalassociates.com

WES JOHNSON
919.422.4853
wjohnson@capitalassociates.com



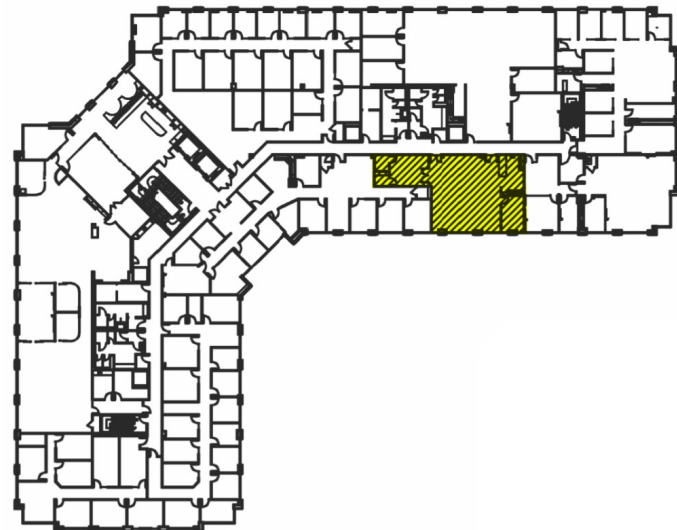
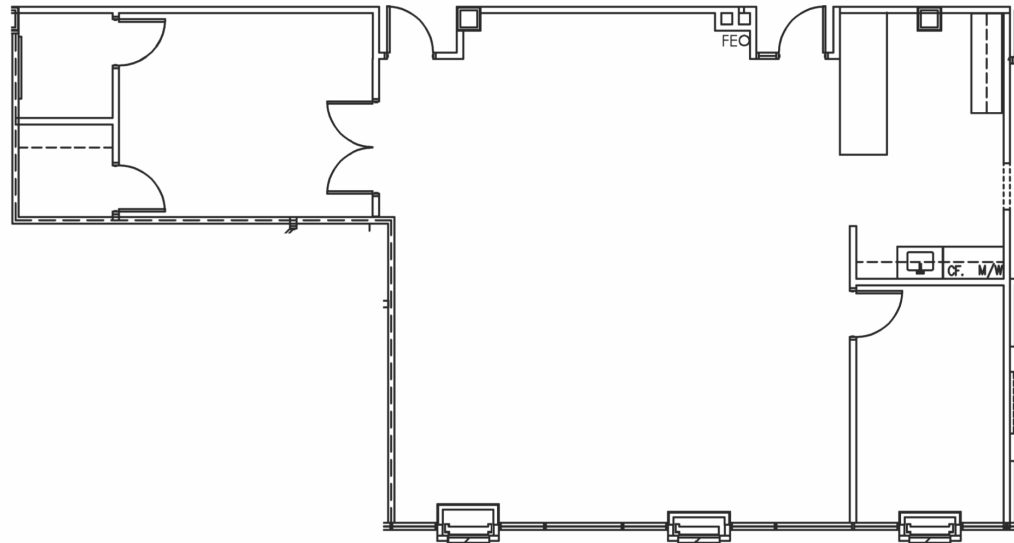
CRESCENT LAKESIDE II

1255 Crescent Green | Cary, NC 27518

AVAILABLE
August 2026

Second Floor
Suite 210

1,910 SF



BRET MULLER

919.523.4200

bmuller@capitalassociates.com

WES JOHNSON

919.422.4853

wjohnson@capitalassociates.com



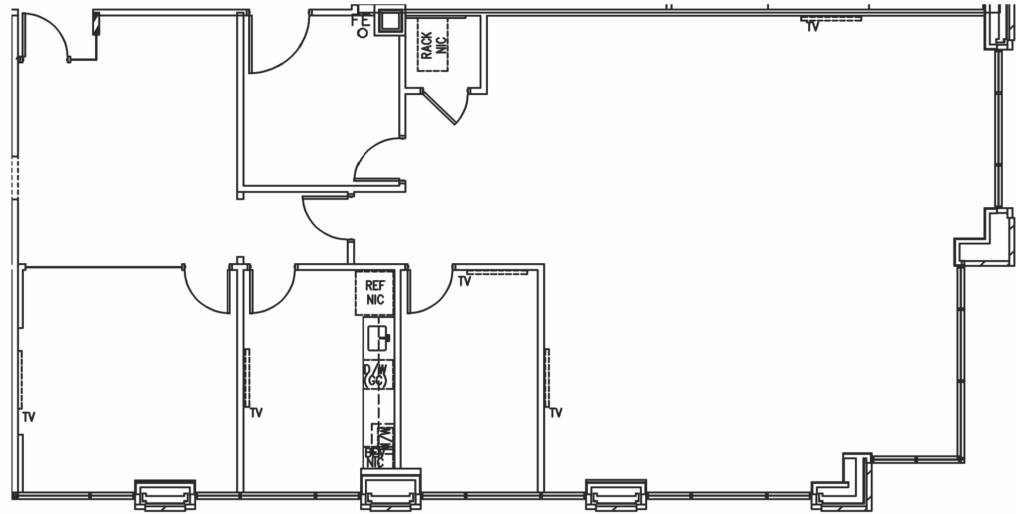
CRESCENT LAKESIDE II

1255 Crescent Green | Cary, NC 27518

AVAILABLE
August 2026

Second Floor
Suite 220

2,445 SF



BRET MULLER

919.523.4200

bmuller@capitalassociates.com

WES JOHNSON

919.422.4853

wjohnson@capitalassociates.com



CRESCENT LAKESIDE II

1255 Crescent Green | Cary, NC 27518

LOCATION

Nearby amenities include shopping, banking, hotels, restaurants, the area's only Life Time Facility, and housing in all price ranges within close proximity to the site.

ON SITE AMENITIES

On-site amenities include vending, express mail drop, an on-site first-class workout facility, showers in one set of men's and women's restrooms, shared conference room on the first floor, a beautifully landscaped plaza with outdoor seating, and onsite property management at both buildings.

[CLICK TO WATCH SHARED CONFERENCE ROOM VIDEO TOUR](#)

Walk Score®



30

CAR DEPENDENT

Most errands require a car.



26

SOME TRANSIT

A few nearby public transportation options.



54

BIKEABLE

Some bike infrastructure.



CAPITAL ASSOCIATES.

BRET MULLER

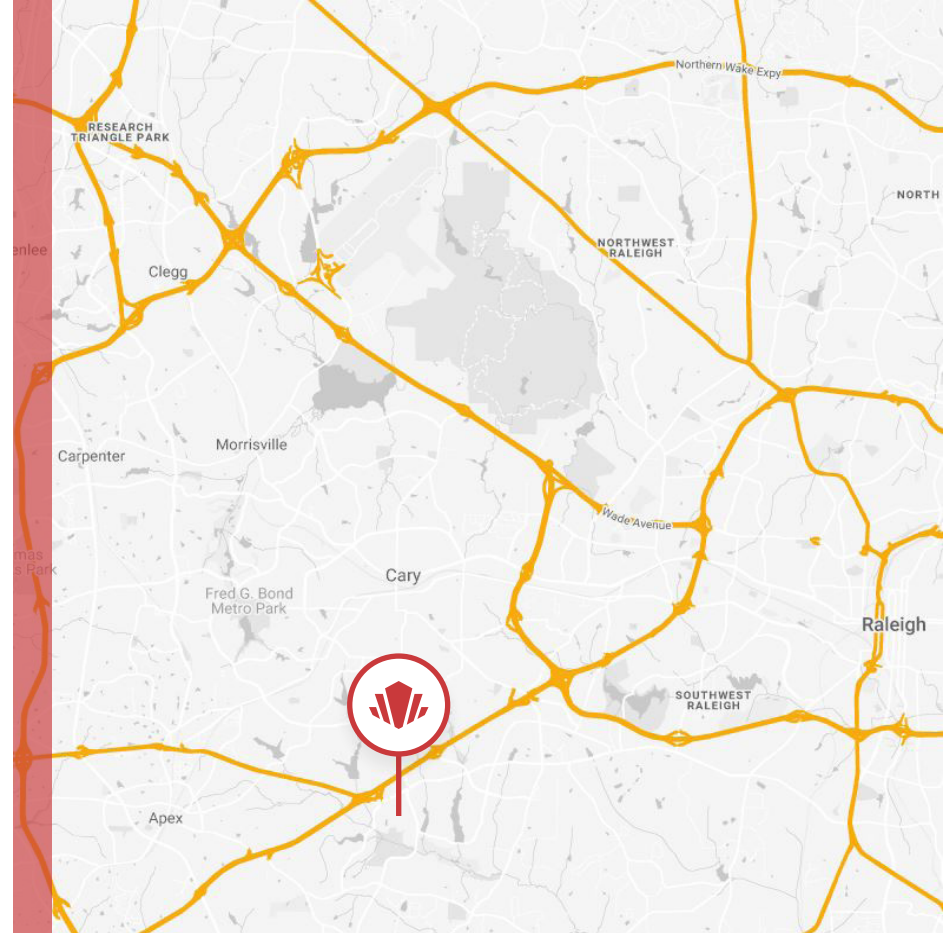
919.523.4200

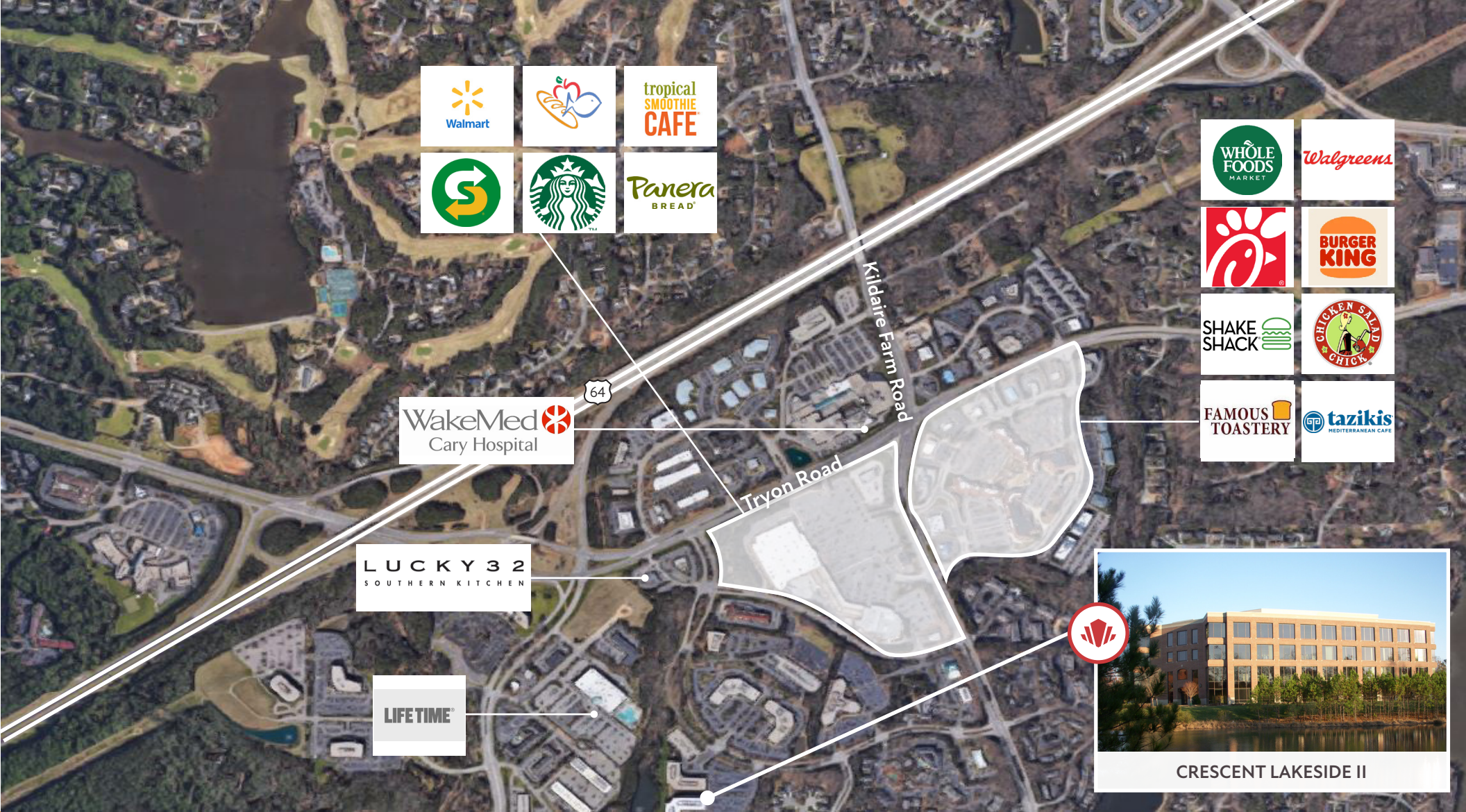
bmuller@capitalassociates.com

WES JOHNSON

919.422.4853

wjohnson@capitalassociates.com





DINING

- Chick-Fil-A
- Whole Foods
- Burger King
- Subway
- Tropical Smoothie Cafe

- Shake Shack
- Lucky 32 Southern Kitchen
- Pizza Hut
- Starbucks
- Chicken Salad Chick

CONVENIENCE

- Lifetime Fitness
- Harris Teeter
- Walmart
- Walgreens

BANKING

- Bank of America
- Wells Fargo
- PNC Bank
- Chase Bank

CRESCENT LAKESIDE II

1255 Crescent Green | Cary, NC 27518

ABOUT

Crescent Lakeside II is a 146,000 SF four-story, brick and glass Class A office building. Outdoor seating is among the beautifully landscaped plaza, and on-site amenities include vending, express mail drop, showers, and a first-class workout facility. The Crescent buildings are located within the highly appealing and successful Crescent multi-use business park in Cary. South of Tryon Road and nestled between Kildaire Farm Road and Regency Parkway, the Crescent community offers shopping, banking, hotels, restaurants, a lifetime fitness facility, and a range of housing options all within a one-mile radius. Easy access to WakeMed Cary Hospital and US Highways 1 and 64 connecting within minutes to Interstates 40, 440, and 540.



BRET MULLER

919.523.4200

bmuller@capitalassociates.com

WES JOHNSON

919.422.4853

wjohnson@capitalassociates.com

