

Grandin Park

Corner Unit For Lease

10 Tache Mews West
St. Albert, Alberta
www.cbre.ca

Beautifully Improved 2,538 SF Unit



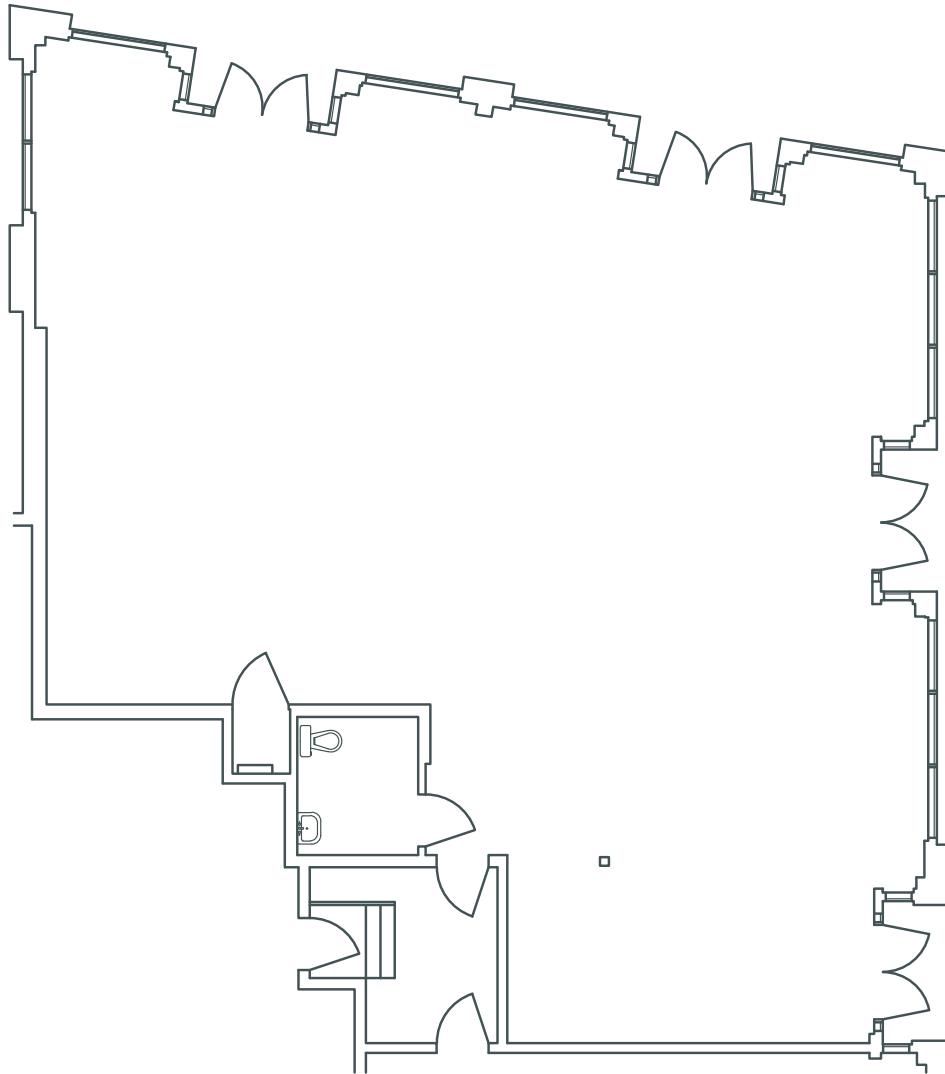


Grandin Park

Corner Unit For Lease

- Beautifully improved space with lots of natural light
- Large showroom space, bathroom, small office, and kitchen area
- Corner unit with 4 access doors
- Unit is demisable

Floor Plan



Property Details

Municipal Address 10 Tache Mews West, St. Albert

Legal Address Plan 1624296; Unit 3

Zoning DCMU - Direct Control Mixed Use

Available Area 2,538 SF (demisable)

Parking Scramble

Op Costs \$15.03

Lease Rate Market

Available Immediately

Area Demographics

	1 km Radius	3 km Radius	5 km Radius
Estimated Population (2024)	72,316		
Estimated Population Change (2019-2024)	5.3%	6.6%	8.3%
Projected Population Change (2024-2029)	14.5%	11.0%	11.9%
Average Household Income	\$114,783	\$141,973	\$162,637

Grandin Park

10 Tache Mews West | St. Albert, Alberta

For Lease



Contact Us

Matt Hanson *Lead*
Sales Representative
+1 780 917 4637
matthew.hanson@cbre.com

James Young
Vice President
+1 780 917 4643
james.young@cbre.com

Chris Stachniak
Sales Representative
+1 780 916 0163
chris.stachniak@cbre.com

This disclaimer shall apply to CBRE Limited, and to all divisions of the Corporation ("CBRE"). The information set out herein (the "Information") has not been verified by CBRE, and CBRE does not represent, warrant or guarantee the accuracy, correctness and completeness of the Information. CBRE does not accept or assume any responsibility or liability, direct or consequential, for the Information or the recipient's reliance upon the Information. The recipient of the Information should take such steps as the recipient may deem necessary to verify the Information prior to placing any reliance upon the Information. The Information may change and any property described in the Information may be withdrawn from the market at any time without notice or obligation to the recipient from CBRE.