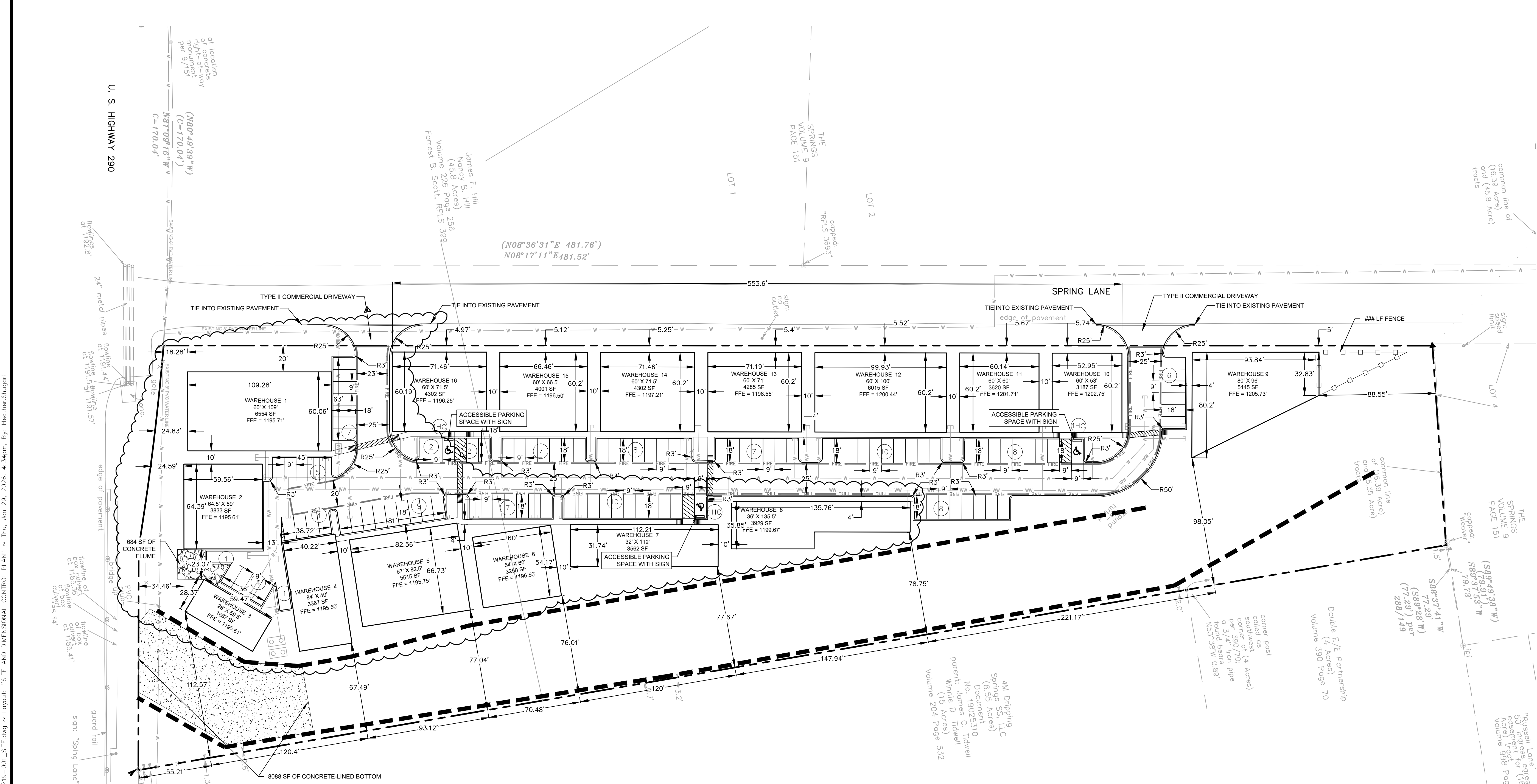


- LEGEND**
- PROPERTY BOUNDARY
 - - - EASEMENT LINE
 - == FIRE LANE
 - == RIBBON CURB
 - PROPOSED WALL
 - LIMITS OF CONSTRUCTION
 - ACCESSIBLE ROUTE
 - FENCE
 - SIGN
 - TREE TO BE KEPT
 - PROTECTED TREE TO BE KEPT
 - ▨ CROSSWALK
 - # STANDARD PARKING COUNT
 - #HC HANDICAP PARKING COUNT



PARKING CALCULATIONS

Area (ac.)	Buildings	Unit (SF)	Requirement	Parking Required	Parking Provided
5.340	Building 1 - Warehouse	6,554	1 space per 5000 SF	2	7
	Building 2 - Warehouse	3,835	1 space per 5000 SF	1	5
	Building 3 - Warehouse	1,686	1 space per 5000 SF	1	6
	Building 4 - Warehouse	3,367	1 space per 5000 SF	1	5
	Building 5 - Warehouse	5,515	1 space per 5000 SF	2	9
	Building 6 - Warehouse	3,250	1 space per 5000 SF	1	7
	Building 7 - Warehouse	3,562	1 space per 5000 SF	1	10
	Building 8 - Warehouse	3,929	1 space per 5000 SF	1	8
	Building 9 - Warehouse	5,445	1 space per 5000 SF	2	6
	Building 10 - Warehouse	3,187	1 space per 5000 SF	1	4
	Building 11 - Warehouse	3,620	1 space per 5000 SF	1	4
	Building 12 - Warehouse	6,015	1 space per 5000 SF	2	10
	Building 13 - Warehouse	4,285	1 space per 5000 SF	1	7
	Building 14 - Warehouse	4,302	1 space per 5000 SF	1	8
	Building 15 - Warehouse	4,001	1 space per 5000 SF	1	7
	Building 16 - Warehouse	4,302	1 space per 5000 SF	1	3
-	Total	66,855	-	20	106

PARKING PROVIDED

Standard:	106
Compact:	0
Parallel:	0
Accessible:	3
Total:	109
Accessible Spaces Required:	1
Bicycle Spaces Provided:	0

TEXAS ONE CALL SYSTEM
1-800-245-4545

UNDER PENALTY OF LAW, THE CONTRACTOR IS REQUIRED TO CONTACT THE TEXAS ONE CALL SYSTEM AT LEAST 48 HOURS BEFORE STARTING EXCAVATION.

CAUTION - ELECTRICITY PRESENT

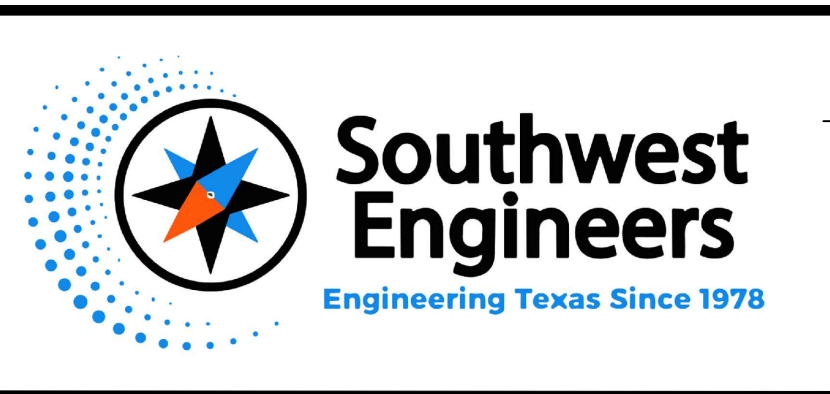
THE GENERAL CONTRACTOR AND ALL SUBCONTRACTORS THAT ENTER OR WORK ON THIS PROJECT ARE RESPONSIBLE FOR LOCATING, USING ONE-CALL OR THE ELECTRIC UTILITIES THEMSELVES, ALL OVERHEAD AND UNDERGROUND ELECTRICAL OF ANY NATURE AND FOR SAFEGUARDING ALL PERSONNEL ON THIS PROJECT, INCLUDING ANY OFF-SITE WORK AREAS SHOWN ON THE PLAN, FROM ANY INTERFERENCE WITH THE ELECTRIC LINES OR FROM DAMAGING, DIGGING UP OR UNCOVERING THE ELECTRIC LINES, GETTING A LADDER IN HARMS WAY OR ANY OTHER ACTIVITY OF ANY NATURE THAT COULD HARM ANY INDIVIDUAL IN ANY MANNER. THIS RESPONSIBILITY HEREBY REMOVES THE ENGINEER AND THE OWNER FROM ANY LIABILITY OF ANY NATURE.

NO.	REVISION	DATE
1	BUILDING 1-8 SHIFT, PARKING UPDATE, EXISTING HYDRANT REMOVAL	1/26/2026



THE SEAL APPEARING ON THIS DOCUMENT WAS AUTHORIZED BY JENNIFER SAYERS, PE

#109825 ON THE DATE INDICATED. ANY ALTERATIONS OF THIS SEALED DOCUMENT WITHOUT PROPER NOTIFICATION TO THE RESPONSIBLE ENGINEER IS AN OFFENSE UNDER THE TEXAS ENGINEERING PRACTICE ACT.



BUDA

205 Cimarron Park Loop
Buda, TX 78610
P: 512.312.4336
TBPELS NO. F-1909
www.swengineers.com

WARNING

IF THIS BAR DOES NOT MEASURE 1" THE DRAWING IS NOT TO SCALE

DRAWN BY: H.S.

CHECKED BY: J.S.

SITE AND DIMENSIONAL CONTROL PLAN

SPRING LANE OFFICE/WAREHOUSE DEVELOPMENT

W US 290, DRIPPING SPRINGS, TX 78620

PROJECT NO. 1219-001

DRAWING NO. _____

SHEET 11 OF 21