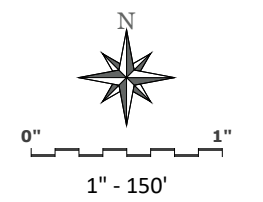
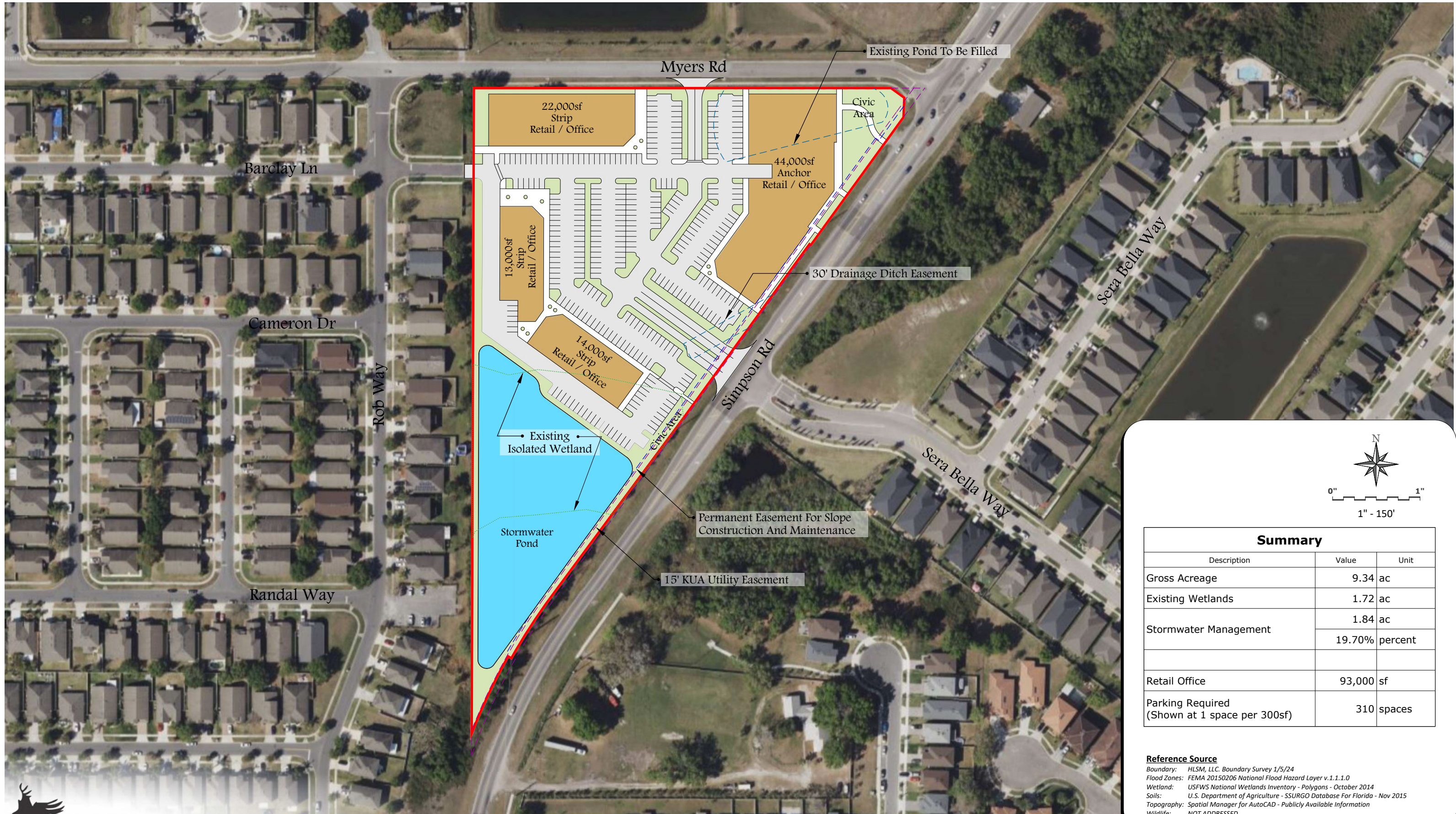


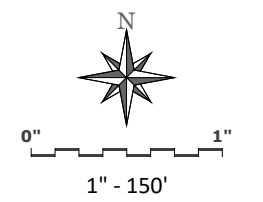
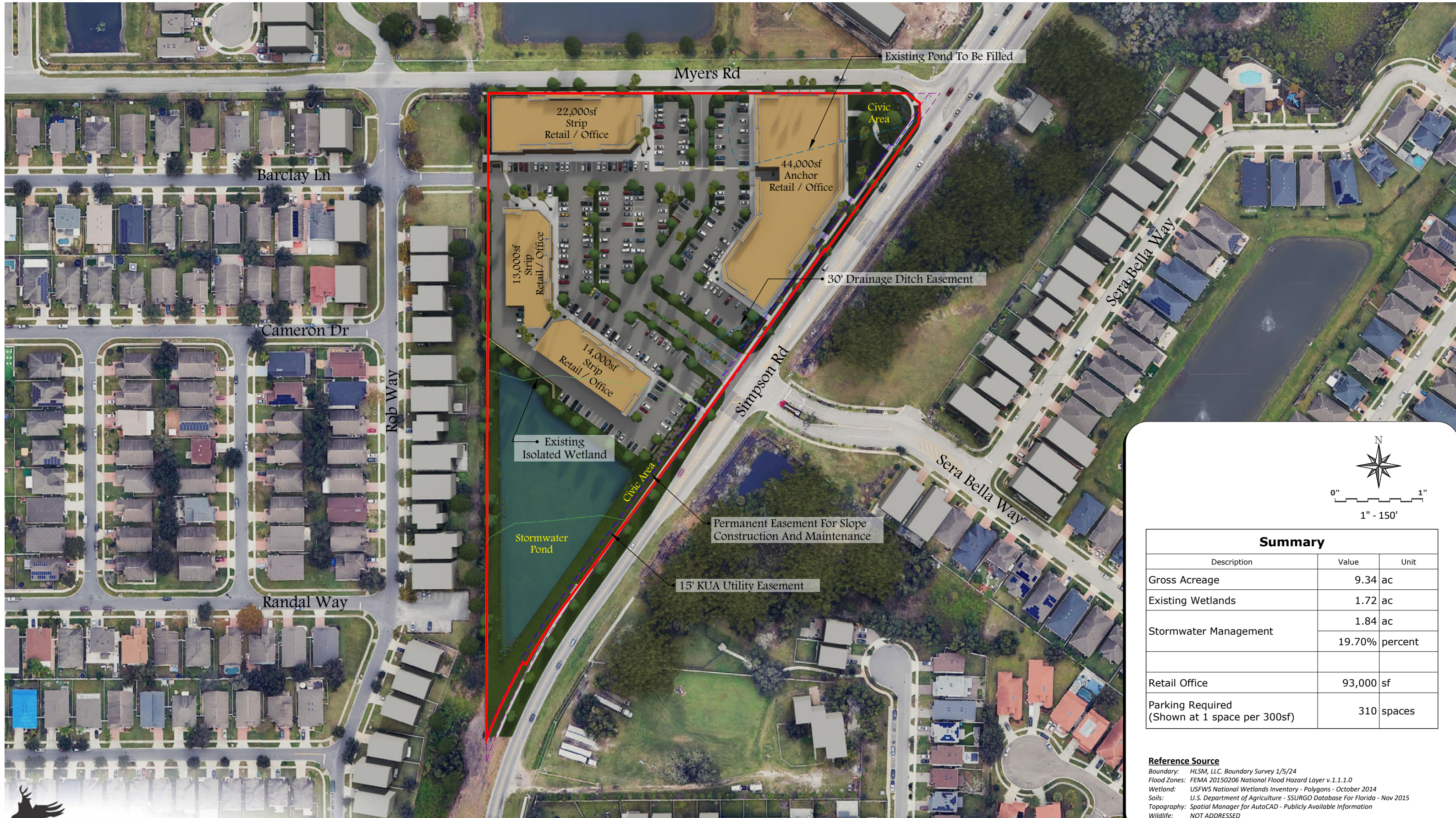
# Boggy Creek Commercial Development I, LLC



Summary		
Description	Value	Unit
Gross Acreage	9.34	ac
Existing Wetlands	1.72	ac
Stormwater Management	1.84	ac
	19.70%	percent
Retail Office	93,000	sf
Parking Required (Shown at 1 space per 300sf)	310	spaces

**Reference Source**  
 Boundary: HLSM, LLC. Boundary Survey 1/5/24  
 Flood Zones: FEMA 20150206 National Flood Hazard Layer v.1.1.1.0  
 Wetland: USFWS National Wetlands Inventory - Polygons - October 2014  
 Soils: U.S. Department of Agriculture - SSURGO Database For Florida - Nov 2015  
 Topography: Spatial Manager for AutoCAD - Publicly Available Information  
 Wildlife: NOT ADDRESSED

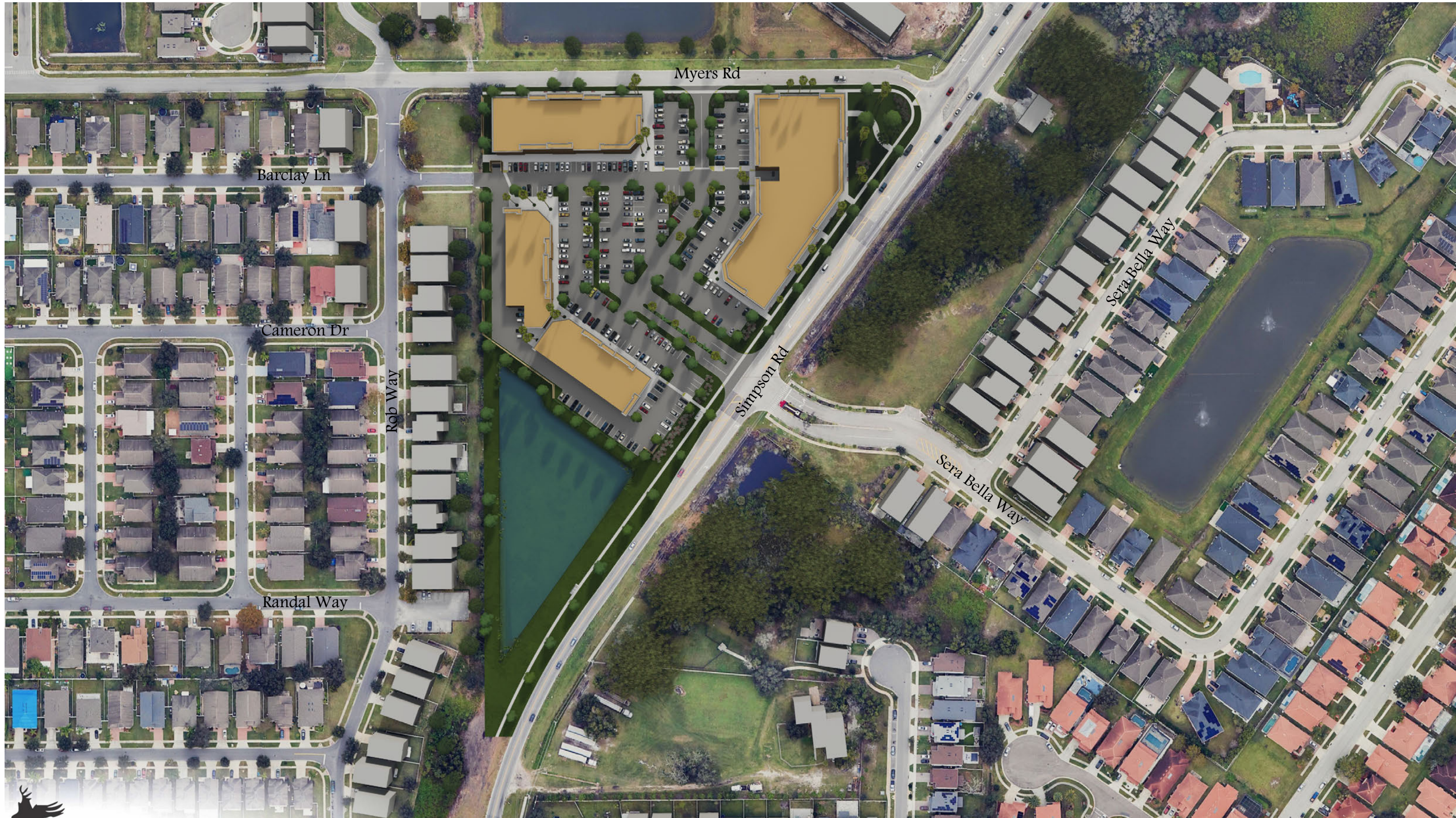
# Boggy Creek Commercial Development I, LLC



Summary		
Description	Value	Unit
Gross Acreage	9.34	ac
Existing Wetlands	1.72	ac
Stormwater Management	1.84	ac
	19.70%	percent
Retail Office	93,000	sf
Parking Required (Shown at 1 space per 300sf)	310	spaces

**Reference Source**  
 Boundary: HLSM, LLC. Boundary Survey 1/5/24  
 Flood Zones: FEMA 20150206 National Flood Hazard Layer v.1.1.1.0  
 Wetland: USFWS National Wetlands Inventory - Polygons - October 2014  
 Soils: U.S. Department of Agriculture - SSURGO Database For Florida - Nov 2015  
 Topography: Spatial Manager for AutoCAD - Publicly Available Information  
 Wildlife: NOT ADDRESSED

# Boggy Creek Commercial Development I, LLC



# Boggy Creek Commercial Development I, LLC



# Boggy Creek Commercial Development I, LLC



# Boggy Creek Commercial Development I, LLC



# Boggy Creek Commercial Development I, LLC



# Boggy Creek Commercial Development I, LLC



# Boggy Creek Commercial Development I, LLC



# Boggy Creek Commercial Development I, LLC



# Boggy Creek Commercial Development I, LLC



# Boggy Creek Commercial Development I, LLC

