



FOR LEASE

An architectural rendering of a modern, single-story commercial building with a mix of stone and light-colored siding, large glass windows, and a central entrance with a small tower. The building is surrounded by a large, paved parking lot with several cars parked. The scene is set against a clear blue sky with some greenery in the background.

EVANS CENTER RETAIL/MEDICAL

Evans x Encino Commons Dr
Corner, San Antonio, TX

PROPERTY OVERVIEW

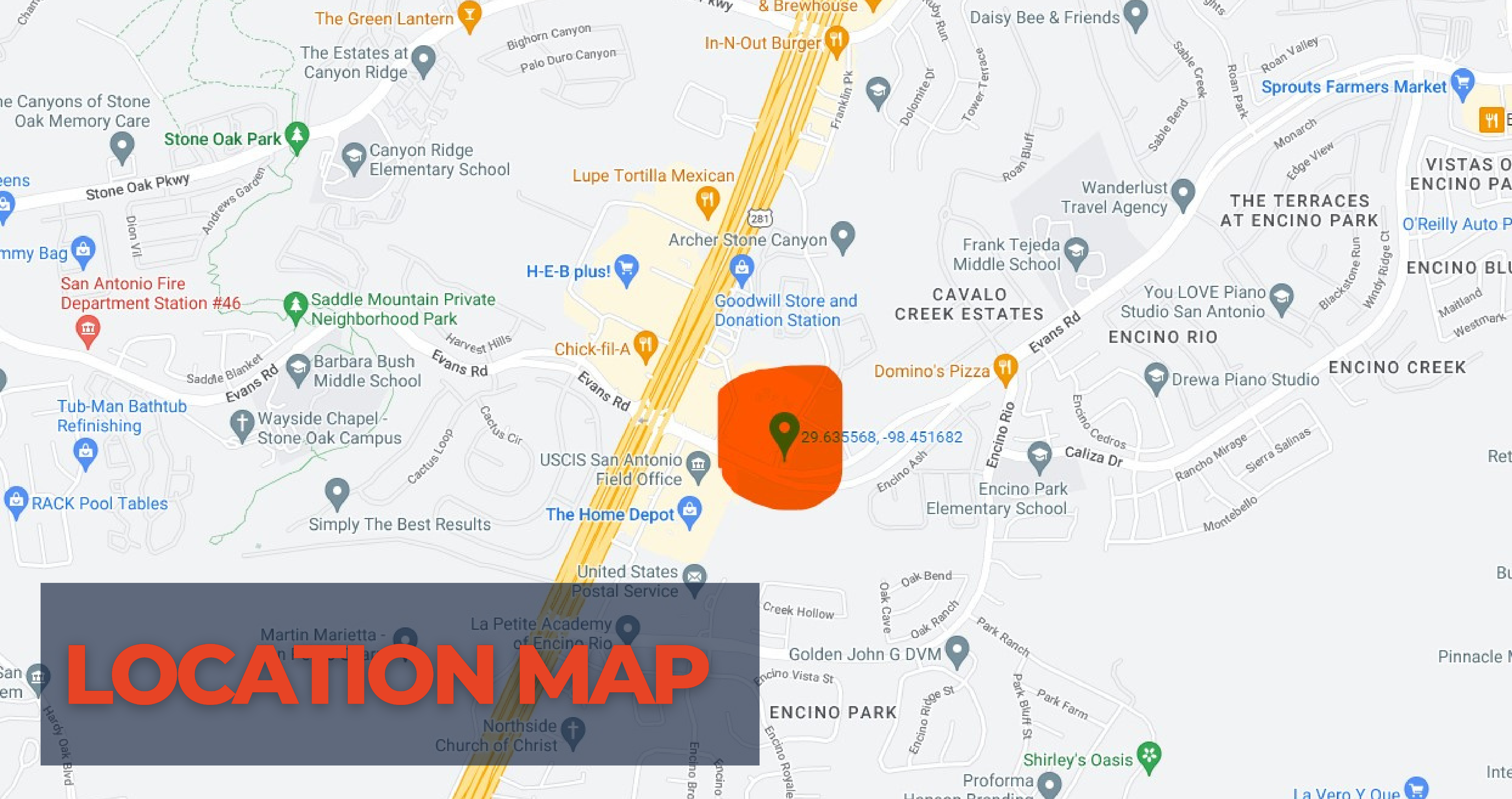
Evans Center Medical/Retail is currently under construction and estimated to be completed during Summer 2023. The Center is located at one of the prime intersections (Evans Rd & Encino Commons Dr) of Far North San Antonio Submarket. The location offers great visibility and exposure to retail/medical users. The class A buildings offer excellent drive-by presence and visibility.

- Building A ~9,790 Sq Ft
- Building B ~9,730 Sq Ft
- Parking Spaces 99



Demographics	1 mile	3 miles
Population	8,861	76,238
Avg HH Income	141,353	127,239

Traffic Counts	1 mile
U.S. Highway 281 & Evans Rd	70,360 vpd
Evans & Encino Commons	21,533 vpd

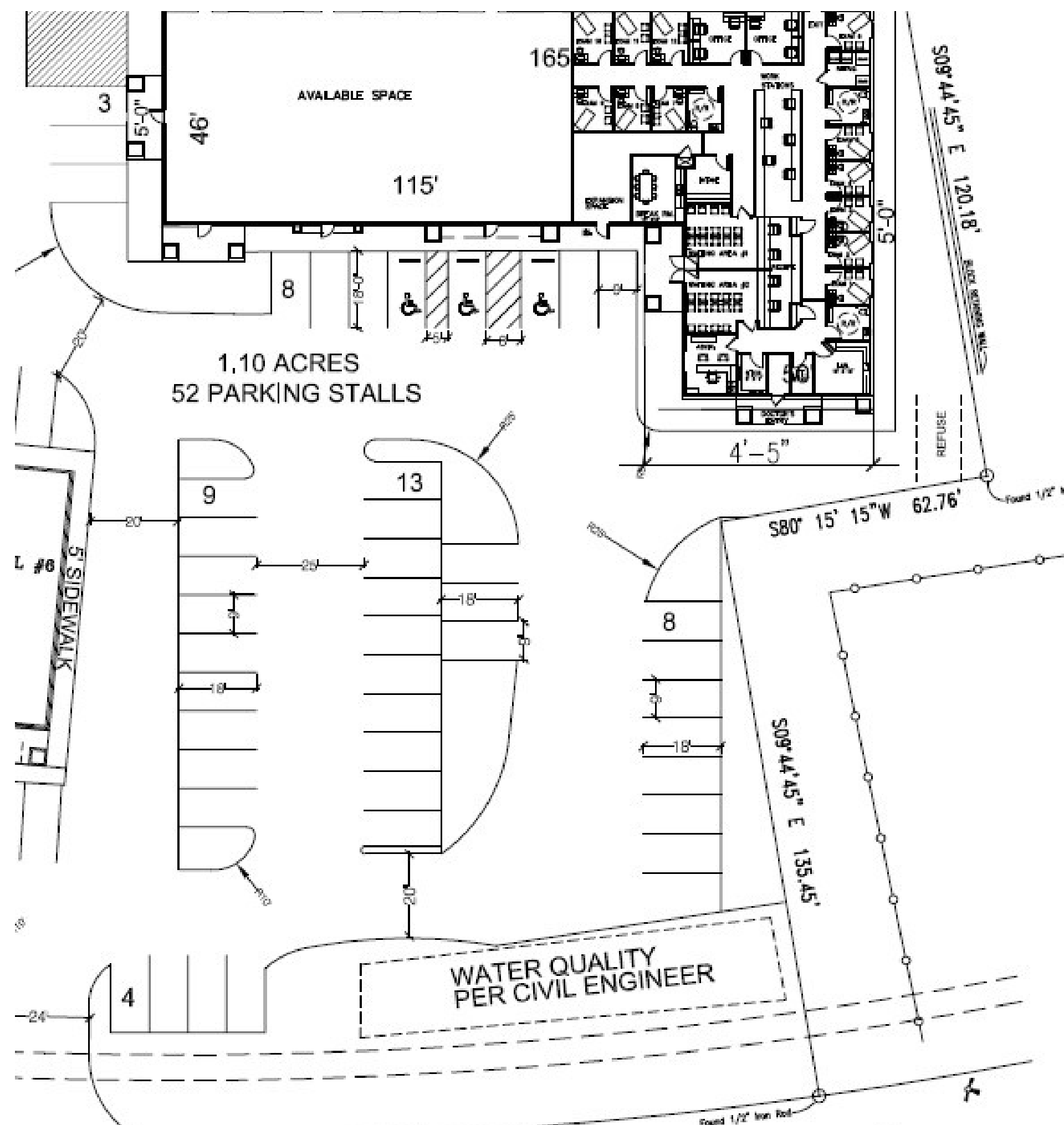


LOCATION MAP



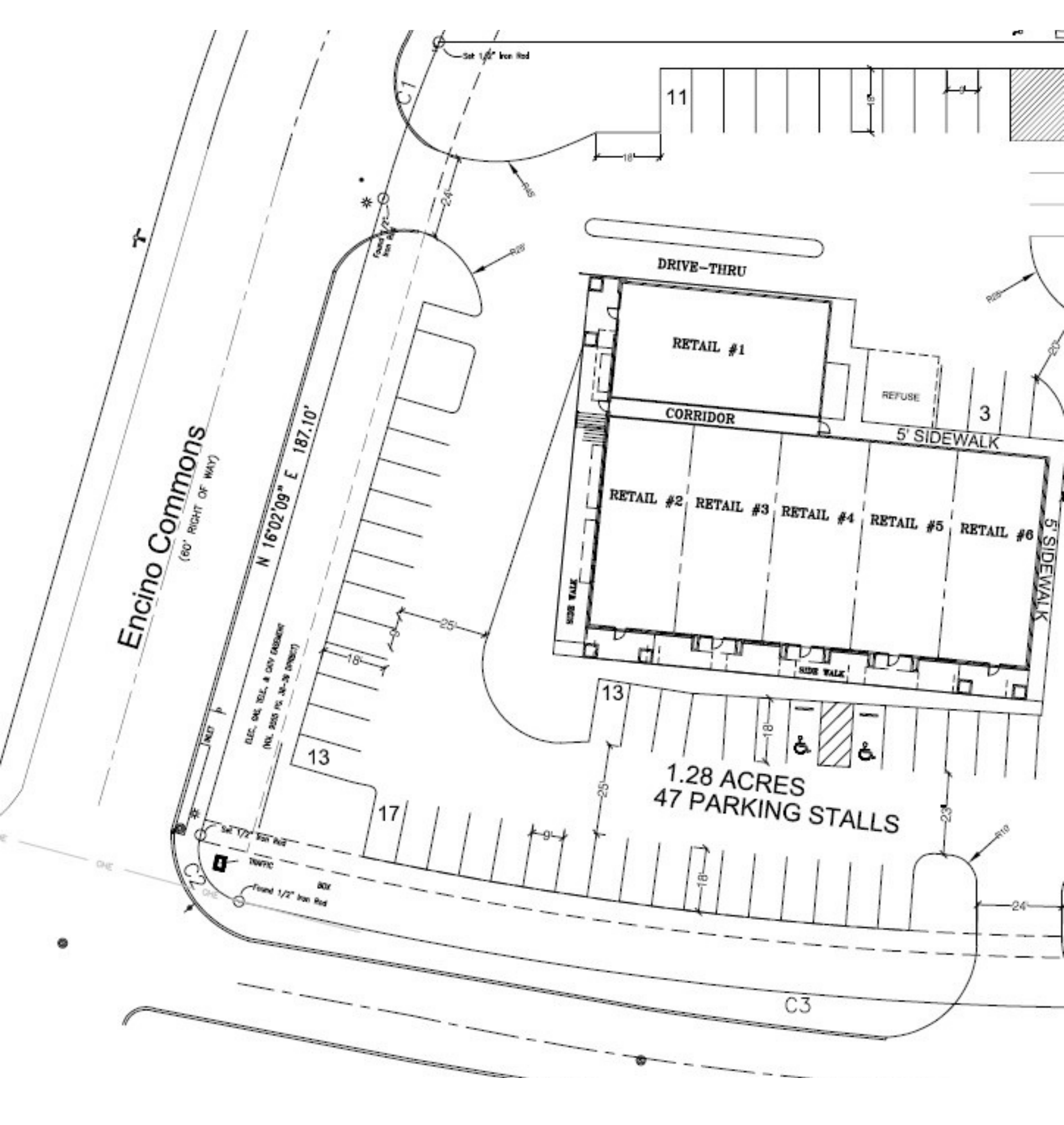
BUILDING A

BUILDING B



BUILDING A

- Space: 9,790 SF
- Corner Suite
- Use: Medical/Retail
- Available Contiguous Space for Lease: 2000 - 4,690 SF



BUILDING B

- Use: Retail/Medical
- Available Contiguous Space for Lease: 1500 - 9820 SF
- Drive Thru available



CONTACT

Vishnu Vemulapalli
Success Square LLC
San Antonio, TX
realtorvish@hotmail.com
(210) 549-7284