



FOR LEASE

LAKESIDE CENTER

Property Highlights

- Lease Rate: \$23.00/SF MG
- 6,482 - 12,964 ± SF available on the second floor (full floor opportunity)
- Landlord willing to provide TI
- Patios on north and south ends of building providing direct access to suites
- Ample parking
- Minutes from walking/biking trails
- Upgraded common areas including lobby and restrooms
- Excellent visibility/signage opportunity along I-49
- Located within 0.25 ± miles of Walmart Headquarters, David Glass Technology Center, and Sam's Club HQ

For more information, please contact:

Stephanie Farmer
sfarmer@sagepartners.com
479 845 3022

Sarah Kate Ellis
sellis@sagepartners.com
479 845 3030

Marshall Saviers
mtsaviers@sagepartners.com
479 845 3042

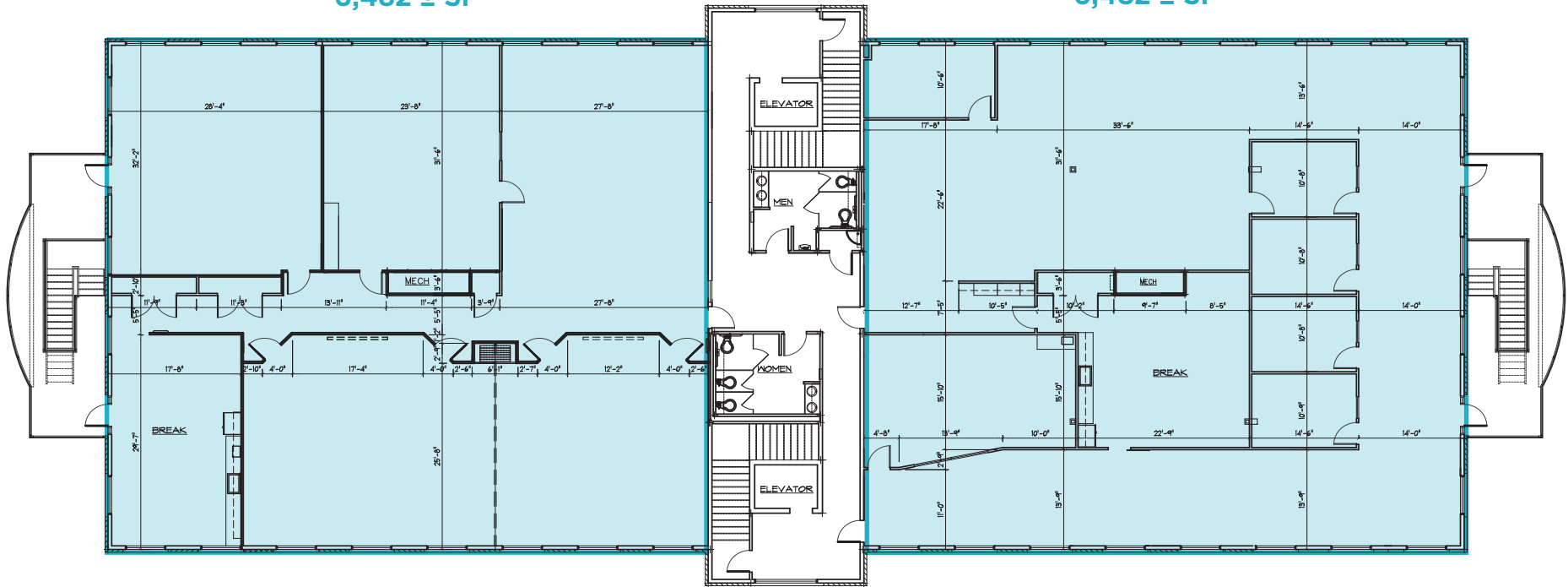
479 845 3000
sagepartners.com

*information deemed reliable but not guaranteed

2ND FLOOR
6,482 SF - 12,964 SF

SUITE 203
6,482 ± SF

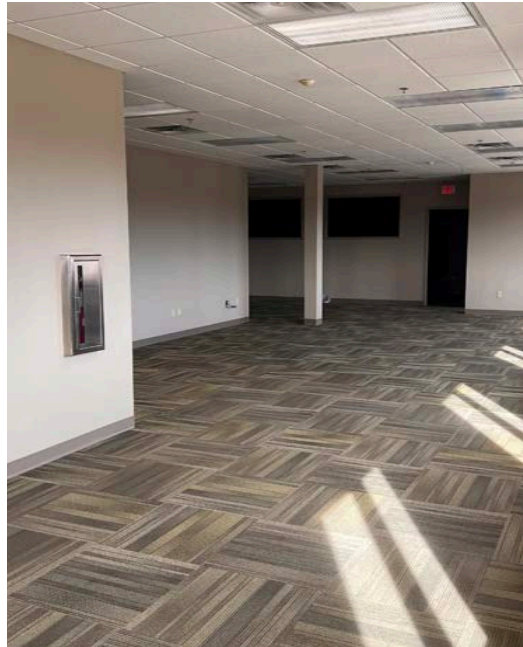
SUITE 200
6,482 ± SF



FLOOR PLAN
Scale: 1/8"=1'-0"

*floor plan depicted is estimated and may vary from actual conditions

INTERIOR PHOTOS 1803 PHYLLIS STREET, STE 200 | BENTONVILLE, AR



INTERIOR PHOTOS 1803 PHYLLIS STREET, STE 203 | BENTONVILLE, AR

CUSHMAN &
WAKEFIELD

sage
PARTNERS



