

For Lease

Two-Story Office Building off of Margrave Dr.



LOGIC

[Click for a Virtual Tour](#) 

625 Margrave Dr.
Reno, NV 89502

Michael Keating, SIOR

Partner
775.386.9727
mkeating@logicCRE.com
S.0174942

Michael Dorn

Vice President
775.453.4436
mdorn@logicCRE.com
S.0189635

Listing Snapshot



\$700-\$850/Mo.
Lease Rate Executive Suites

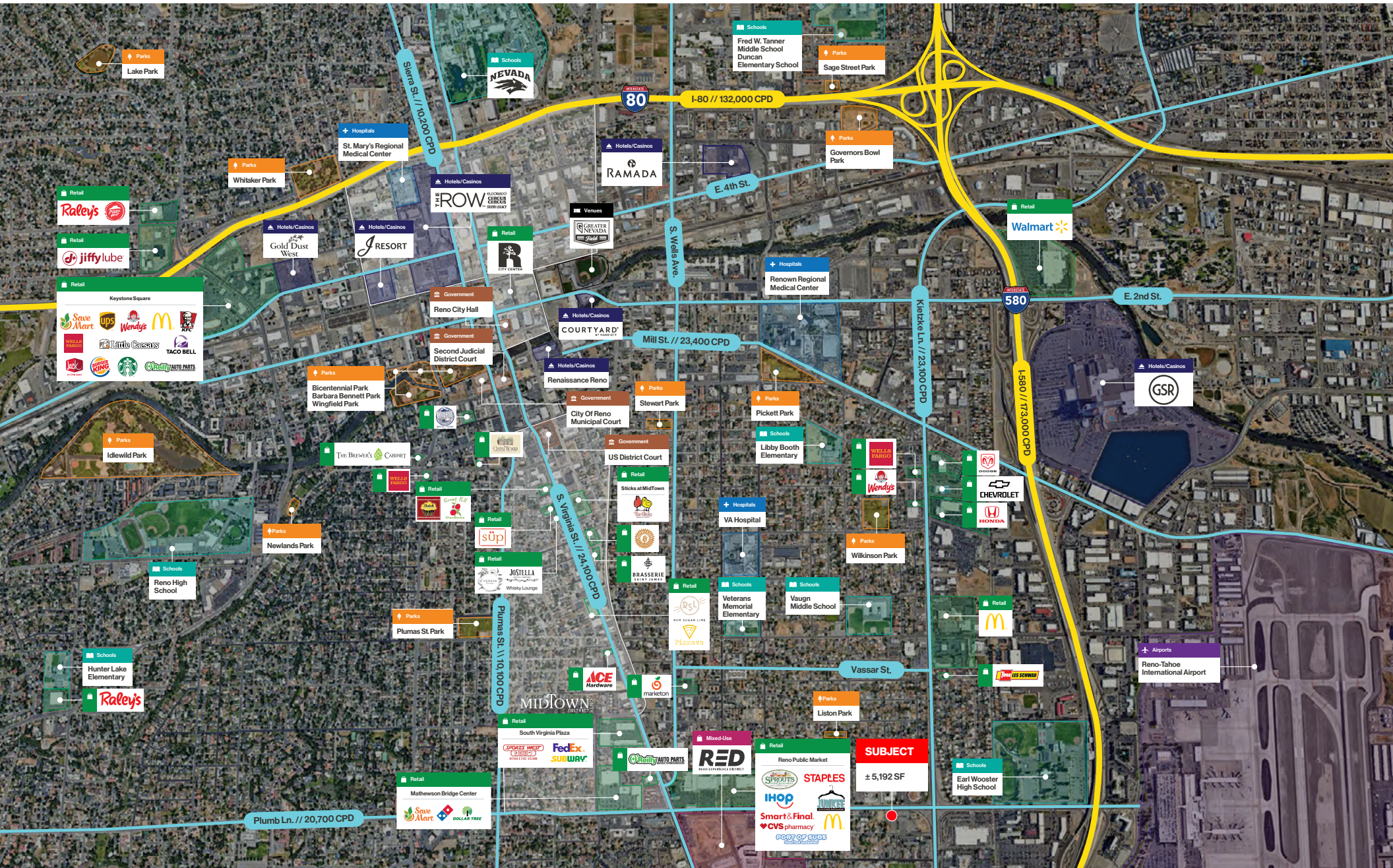
Property Highlights

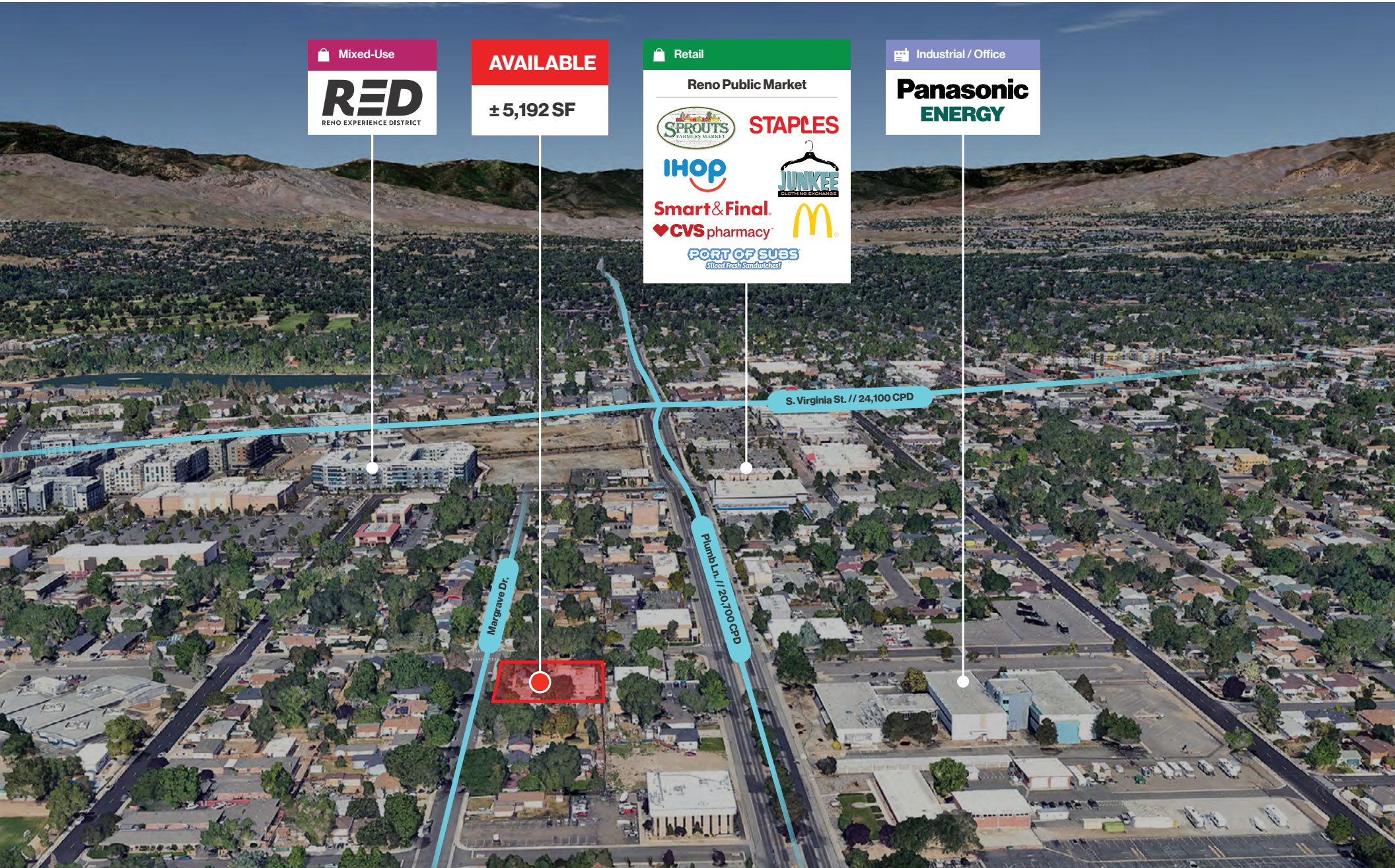
- Two-story office building
- ± 5,192 total combined square footage
- Sixteen (16) offices, and three (3) restrooms
- Ability to add sink in 30 days for qualifying tenants
- Newly remodeled, including work on floors, painting, parking lot and lighting
- Natural lighting throughout
- Ability to lease out executive suites

Demographics

	1-mile	3-mile	5-mile
2025 Population	23,679	118,690	242,350
2025 Average Household Income	\$74,735	\$90,972	\$100,291
2025 Total Households	9,772	52,542	103,069







Mixed-Use

RED

RENO EXPERIENCE DISTRICT

AVAILABLE

± 5,192 SF

Retail

Reno Public Market

SPROUTS FARMERS MARKET STAPLES

IHOP JUNKEE

Smart & Final. CVS pharmacy MCDONALD'S

PORT OF SUBS

Sliced. Fresh. Sandwiches!

Industrial / Office

Panasonic ENERGY

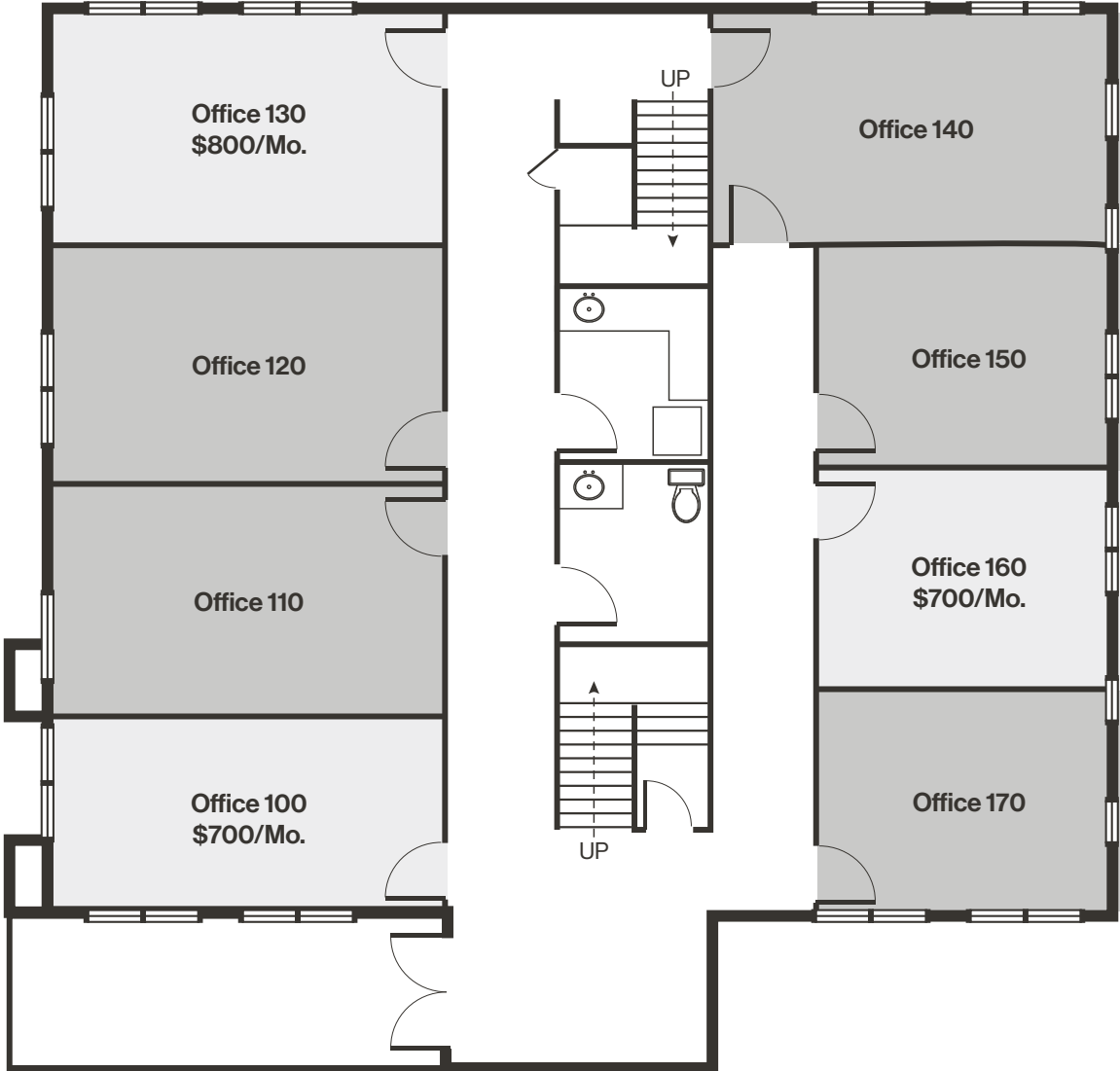
Margrave Dr.

Plumb Ln. // 20,000 CPD

S. Virginia St. // 24,100 CPD

Floor Plan | First Floor

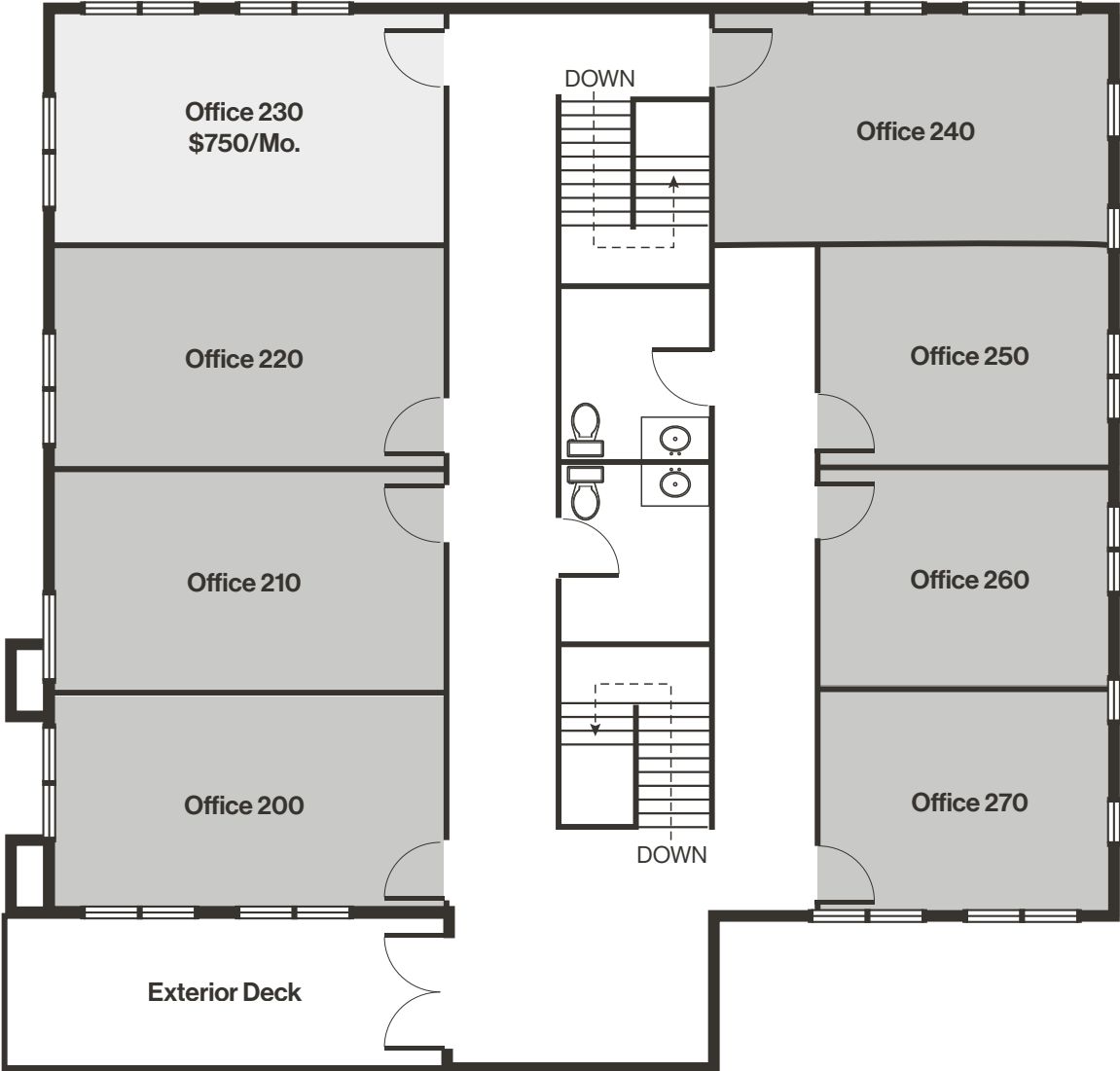
■ Rentable Area □ Common Area



*Adding a sink will increase rent by \$100/mo.

Floor Plan | Second Floor

■ Rentable Area □ Common Area



Property Photos



Interior Photos



LOGIC Commercial Real Estate

Specializing in Brokerage and Receivership Services



Join our email list and
connect with us on LinkedIn

The information herein was obtained from sources deemed reliable; however LOGIC Commercial Real Estate makes no guarantees, warranties or representation as to the completeness or accuracy thereof.

For inquiries please reach out to our team.

Michael Keating, SIOR
Partner
775.386.9727
mkeating@logicCRE.com
S.0174942

Michael Dorn
Vice President
775.453.4436
mdorn@logicCRE.com
S.0189635