

Office / High Tech / Research Suite

3915 Research Park, Ann Arbor, MI 48108



OFFERING SUMMARY

Lease Rate per SF:	\$15.00 SF/yr NNN
NNN Expenses:	\$5.62/SF
Monthly Lease Rate:	\$3,985 (Includes expenses)
Available SF:	2,318 SF
Building Size:	34,833 SF
Zoning:	RE (Research)

PROPERTY HIGHLIGHTS

- Functional mix of private offices and open area
- Private ADA restroom
- Private entrance
- Kitchenette
- Existing overhead door that could potentially be reopened
- Free parking in front of and near unit
- Professional Research Park setting
- Easy access to I-94, US-23, M-14, and Ann Arbor

Jeff Evans

734.926.0222

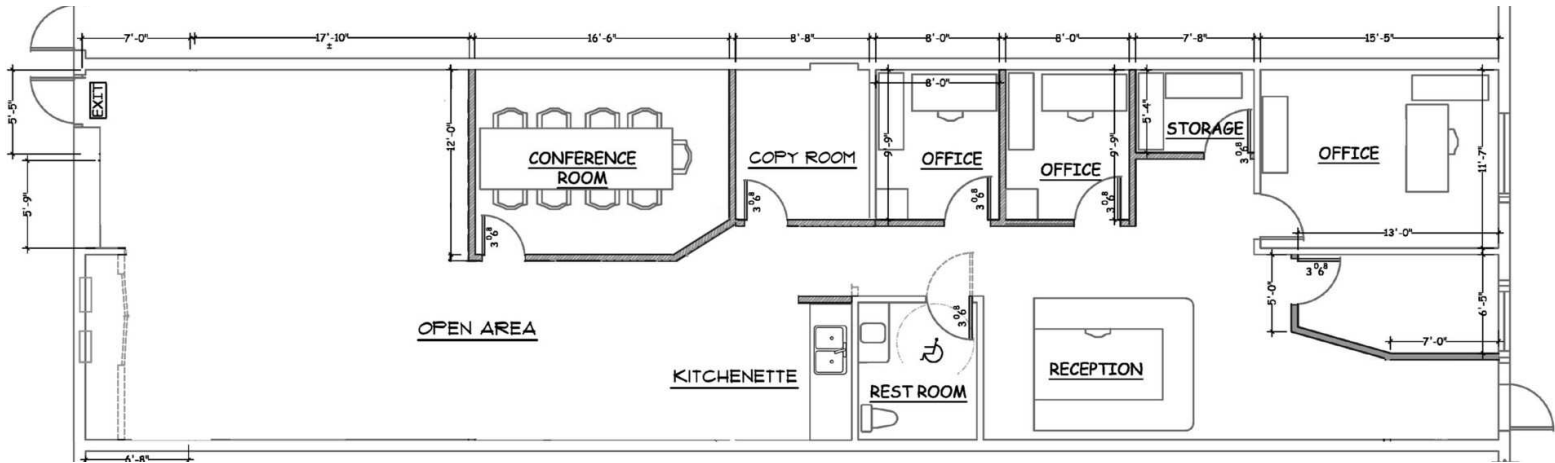
jeffevans@swishercommercial.com

Office / High Tech / Research Suite

3915 Research Park, Ann Arbor, MI 48108



For Sublease



Jeff Evans

734.926.0222

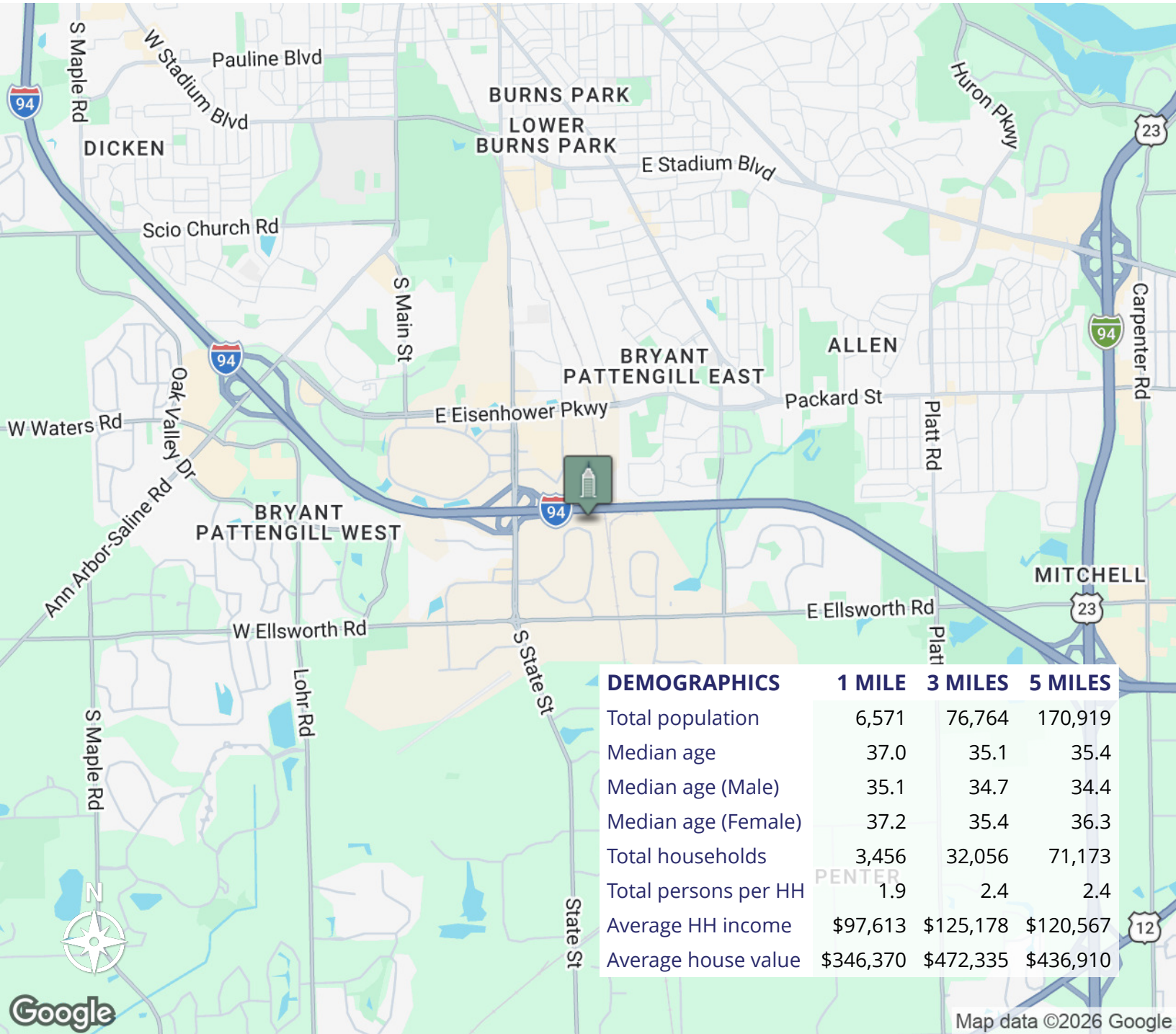
jeffevans@swishercommercial.com

Office / High Tech / Research Suite

3915 Research Park, Ann Arbor, MI 48108



For Sublease



Jeff Evans

734.926.0222

jeffevans@swishercommercial.com