

8237 S. HOLLY STREET

Centennial, CO 80122

11,727 SF RETAIL SPACE AVAILABLE



Jack Lazzeri / Senior Associate / +1 303 981 6521 / jack.lazzeri@cushwake.com

Patrick McGlinchey / Managing Director / +1 210 303 3149 / patrick.mcglinchey@cushwake.com

Justin Gregory / Managing Director / +1 303 803 7170 / justin.gregory@cushwake.com





8237 S. HOLLY STREET

Centennial, CO 80122

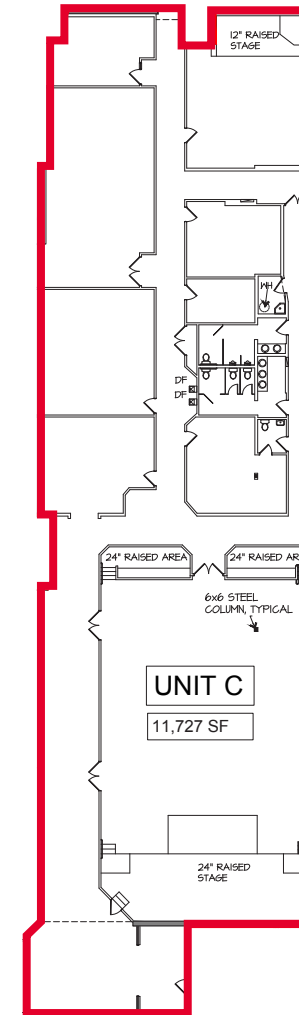
PROPERTY HIGHLIGHTS

11,727 SF RETAIL SPACE AVAILABLE

Center Type	Neighborhood Center
Available	11,727 SF
Base Rent	Call Broker
NNNs	\$16.00/SF
Clear Height	16.5' (20' to deck)
City/County	Centennial/Arapahoe

PROPERTY DETAILS

- Former Church space across from King Soopers providing rare junior box opportunity.
- High ceilings offering flexibility for a variety of potential uses
- Across from the brand new South Suburban Sports Complex.
- Painting of the plaza is planned for spring 2026.

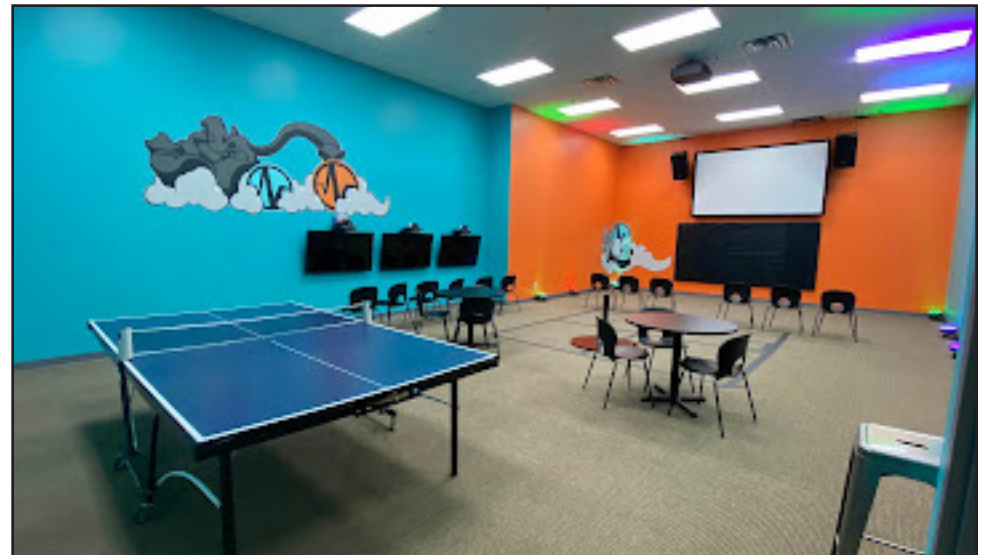
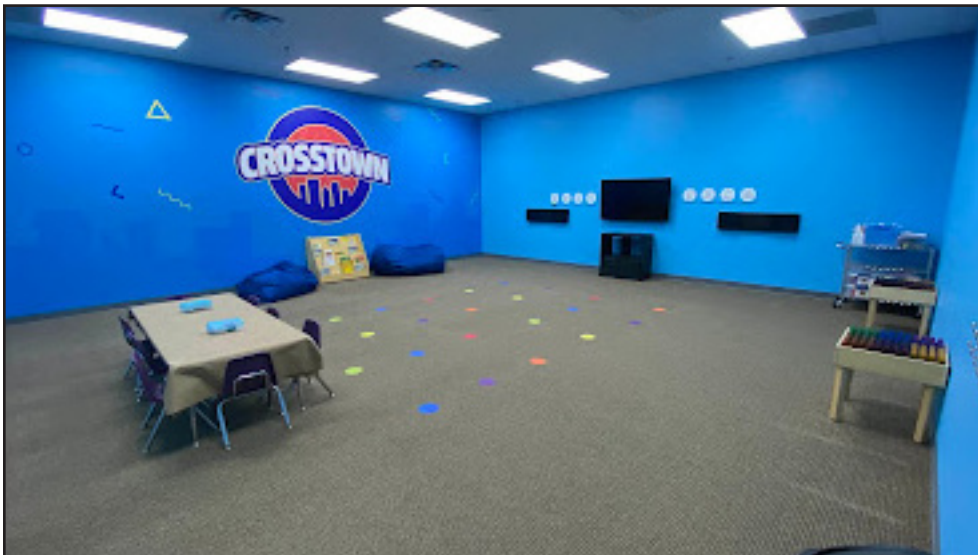




8237 S. HOLLY STREET

Centennial, CO 80122

11,727 SF RETAIL SPACE AVAILABLE



8237 S. HOLLY STREET

Centennial, CO 80122

AERIAL MAP



8237 S. HOLLY STREET

Centennial, CO 80122

Jack Lazzeri

Senior Associate

+1 303 981 6521

jack.lazzeri@cushwake.com

Patrick McGlinchey

Managing Director

+1 210 303 3149

patrick.mcglinchey@cushwake.com

Justin Gregory

Managing Director

+1 303 803 7170

justin.gregory@cushwake.com

Led by Managing Directors Patrick McGlinchey and Justin Gregory, Cushman & Wakefield's Colorado Retail Services team specializes in retail leasing, commercial land, and building sales throughout the Rocky Mountain region. McGlinchey is highly regarded for his ability to navigate complex zoning processes and his intentional approach to executing client strategy, while Gregory brings a direct, no-nonsense style and a team-first mentality to every transaction.

They are supported by Jack Lazzeri, a fifth-generation Coloradan focused on tenant expansion and landlord representation, and Nico Demetrian, a Brokerage Specialist and licensed drone pilot who provides essential valuation and property marketing support. Together, the team leverages deep local roots and a collaborative workflow to deliver clear, actionable results for their clients.