

 FLOORSPACE

2245

West Broadway

2245

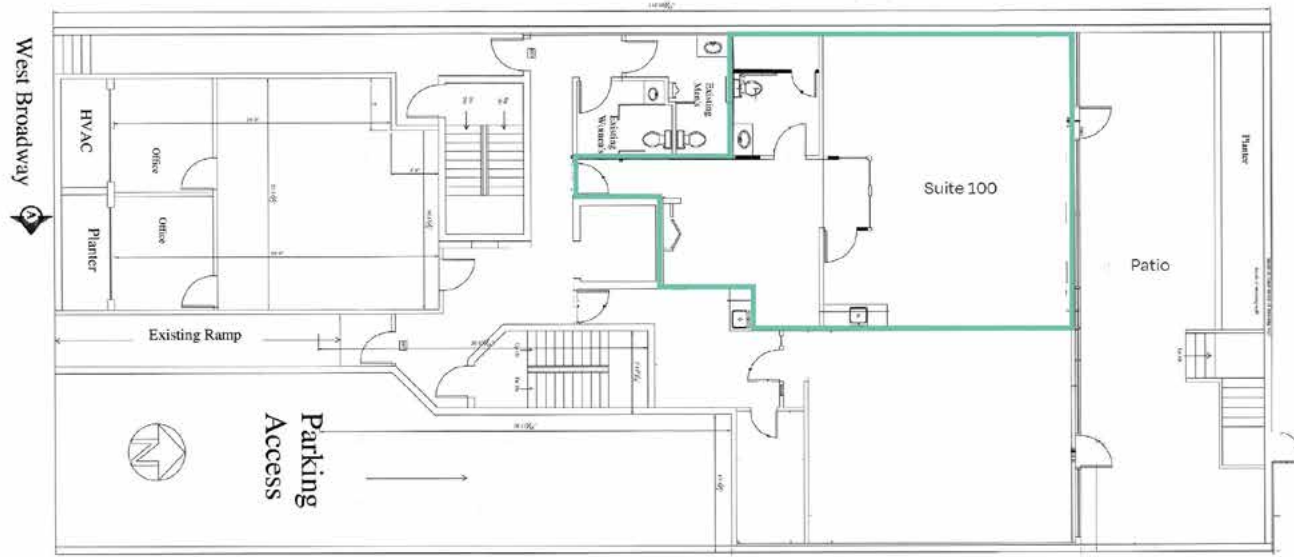
// OFFICE SPACE FOR LEASE

The Opportunity at 2245 W Broadway

Located on Broadway and close to the heart of Kitsilano, the property is ideally positioned offering easy access to downtown and neighbouring areas. The Broadway corridor is one of Vancouver's largest employment areas, with plenty of shops, restaurants and other amenities in close proximity.

Availability

Unit	Size	Availability	Basic Rent	Additional Rent
100	1,184 SF	Immediately	Contact Agent	\$12.50 PSFPA (2026 est.)
201	1,503 SF	Immediately	Contact Agent	\$12.50 PSFPA (2026 est.)
301	~941 SF	Immediately	Contact Agent	\$12.50 PSFPA (2026 est.)

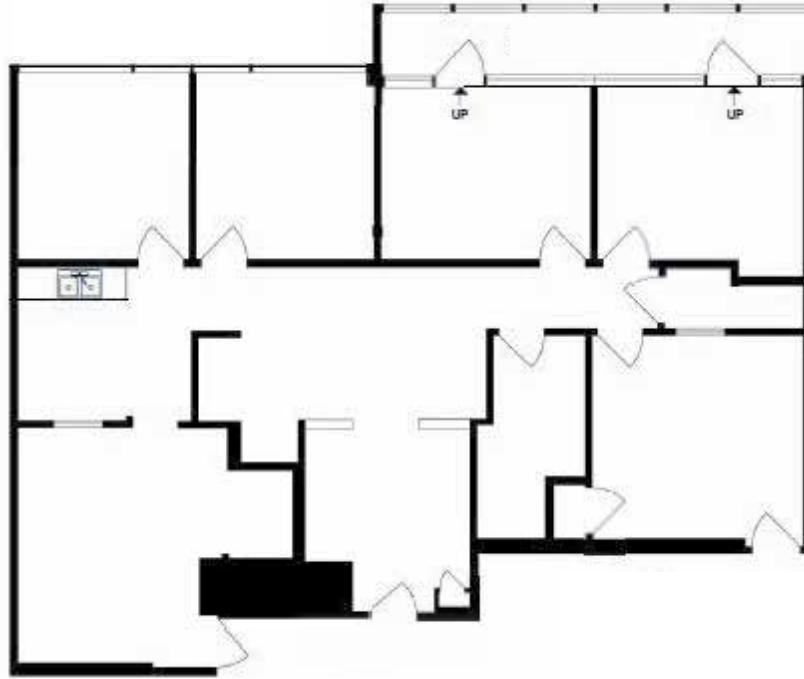


// Unit 100

A ground floor office with a private entry room, open workspace, wood flooring, recessed lighting, built in cabinetry with sink, and access to a private outdoor patio.

[EXPLORE SPACE ONLINE](#)

Size	~ 1,184 SF
Basic Rent	Contact Agent
Additional Rent	\$12.50 PSFPA (2026 est.)
Availability	Immediately



// Unit 201

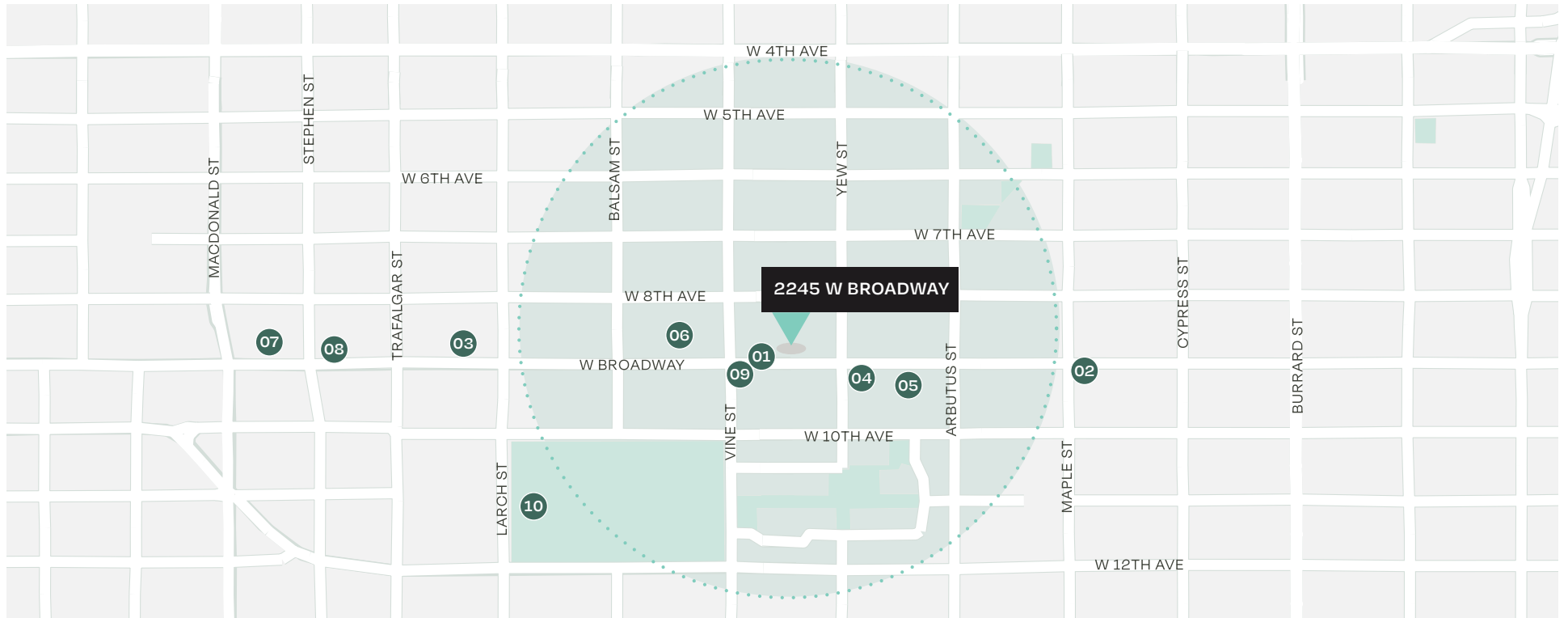
The suite features high quality finishes and strong natural light across a functional layout that includes reception, two private offices, a meeting room, a boardroom, a kitchen, and a private balcony.

Size	~1,503 SF
Basic Rent	Contact Agent
Additional Rent	\$12.50 PSFPA (2026 est.)
Availability	Immediately

[EXPLORE SPACE ONLINE](#)

The Neighbourhood

West Broadway places your business in one of Vancouver's most walkable neighbourhoods. Surrounded by cafés, dining, and retail, tenants enjoy everyday convenience and client-friendly access. The upcoming Broadway Subway station will bring rapid transit to the doorstep, enhancing connectivity and foot traffic in the area.



TRANSIT SCORE

72



WALK SCORE

98



BIKE SCORE

98

- | | | | |
|-----|-----------------|-----|---------------------|
| 01. | London Drugs | 06. | White Spot |
| 02. | BC Liquor Store | 07. | Safeway |
| 03. | Thomas Haas | 08. | RBC Royal Bank |
| 04. | Lifelabs | 09. | TD Canada Trust |
| 05. | Fitness World | 10. | Kitsilano Secondary |

For more information, please contact:



Harris Sheldon

ASSOCIATE

+1 604 612-6516

harris@floorspace.ca



Suite 520 - 900 West Hastings
Vancouver, BC Canada V6E 1E5

FLOORSPACE.CA

