



PALISADES PLAZA

SEC

# FOUNTAIN HILLS BLVD & PALISADES BLVD

Fountain Hills, AZ



# property highlights

**AVAILABLE:** ±900 SF & ±1,200 SF

**ZONING:** C-2

**PRICING:** Call for Pricing

## property highlights

- Safeway and Goodwill anchored shopping center located in a low vacancy market.
- Inline shop space available with frontage along Palisades Blvd.
- Affluent surrounding community with an average household income of over ±\$191,000.
- Within 5-miles of Desert Mountain High School and Fountain Hills High School – over ±2,400 student's total.
- Multiple ingress and egress points along Fountain Hills Blvd and Palisades Blvd for convenient access.

## traffic count ADOT 2024

Fountain Hills Blvd		Palisades Blvd	
<b>N</b>	±6,409 VPD (NB & SB)	<b>E</b>	±7,856 VPD (EB & WB)
<b>S</b>	±11,954 VPD (NB & SB)	<b>W</b>	±7,007 VPD (EB & WB)

## neighboring tenants



# site plan



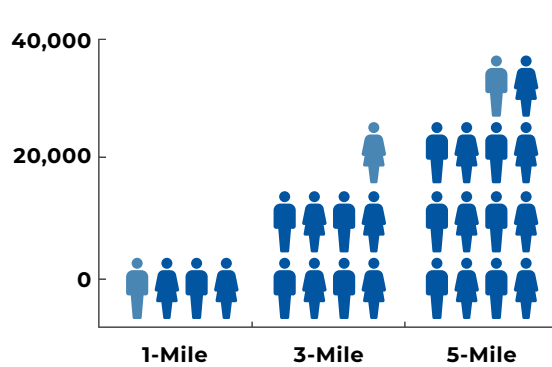
# zoom aerial





# demographics overview

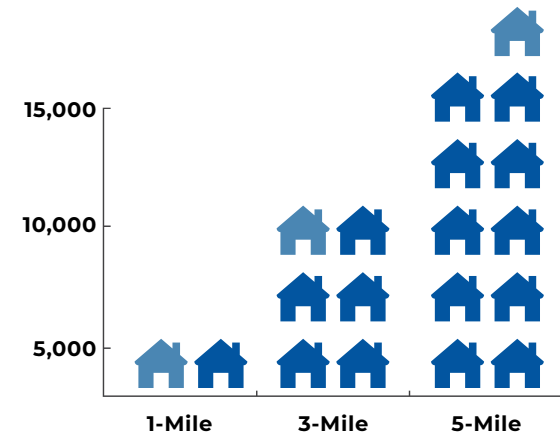
ESRI 2025



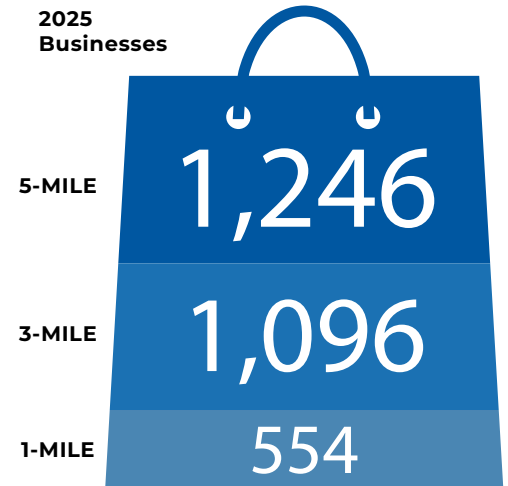
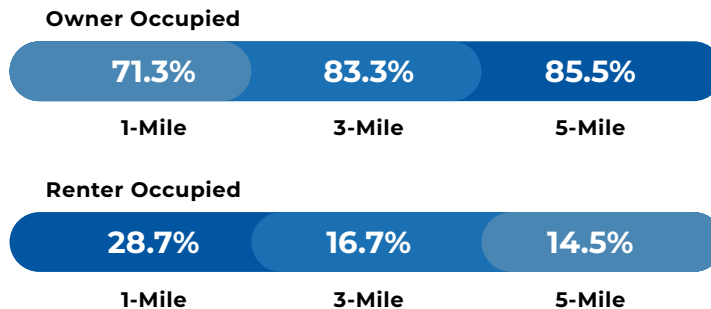
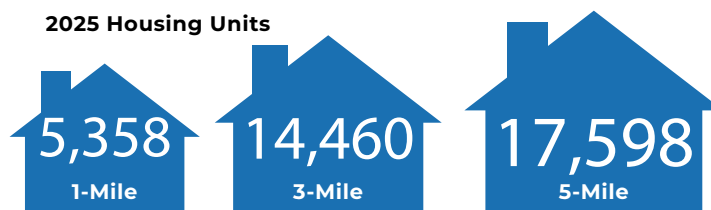
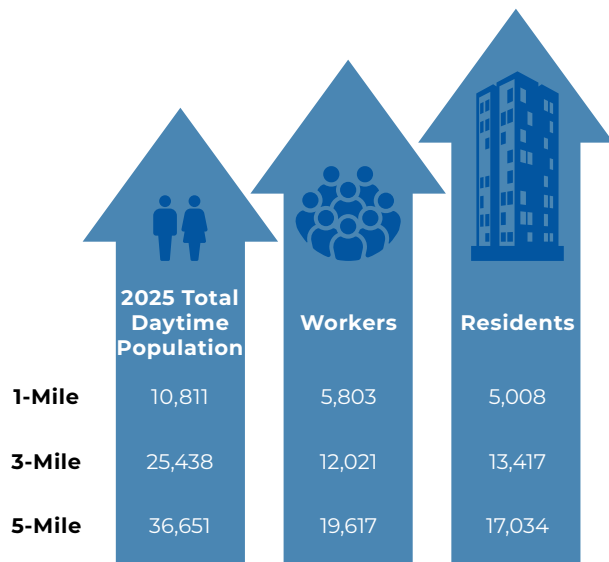
	1-Mile	3-Mile	5-Mile
2025 Total Population	8,904	24,770	31,695
2030 Total Population	8,949	24,917	31,877



	Median HH Income	Average HH Income	Per Capita Income
1-Mile	\$100,970	\$134,404	\$68,986
3-Mile	\$112,957	\$168,561	\$82,821
5-Mile	\$125,333	\$191,627	\$90,807



	1-Mile	3-Mile	5-Mile
2025 Households	4,614	12,164	15,021
2030 Households	4,709	12,402	15,306





## EXCLUSIVELY LISTED BY

**JACKSON DRAGON**  
(602) 288.3468  
jdragon@pcaemail.com

PHOENIX COMMERCIAL ADVISORS  
3131 East Camelback Road, Suite 340  
Phoenix, Arizona 85016  
P. (602) 957-9800  
F. (602) 957-0889  
phoenixcommercialadvisors.com

The information contained herein has been obtained from sources believed reliable. While we do not doubt its accuracy, we have not verified it and make no guarantee, warranty or representation about it. It is your responsibility to independently confirm its accuracy and completeness. Any projections, opinions, assumptions or estimates used are for example only, and do not represent the current or future performance of the property. The value of this transaction to you depends on tax and other factors which should be evaluated by your tax, financial and legal advisors. You and your advisors should conduct a careful, independent investigation of the property to determine to your satisfaction the suitability of the property for your needs.