



PRICE: \$17.55 - 18.75 SF/YR

SOUTHERN MEADOWS INDUSTRIAL PARK

5202-5316 South County Road 1180, Midland, TX 79706

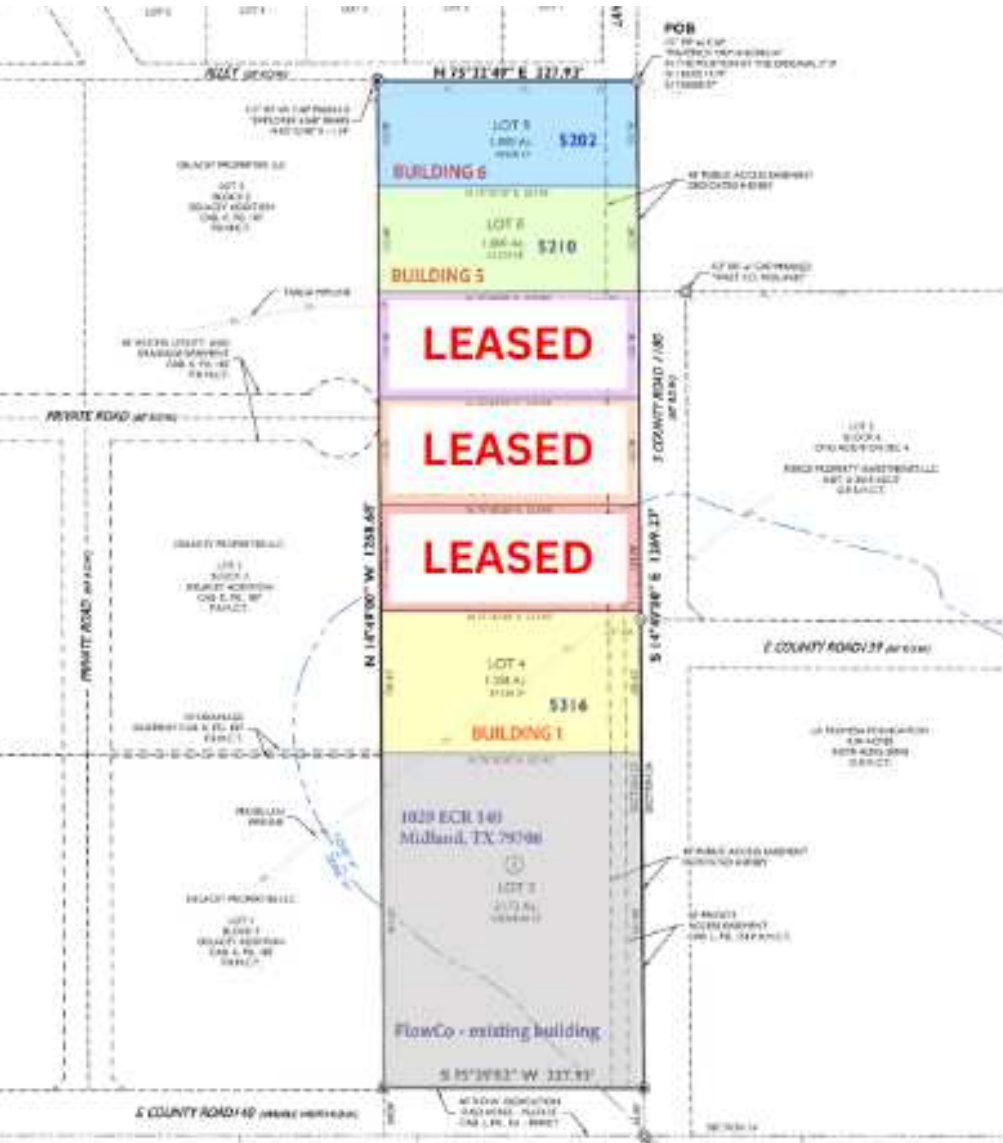
Trey Dennis

Broker
432.236.7500
trey@moriahgroup.net

PRICE: \$17.55 - 18.75 SF/YR

SOUTHERN MEADOWS INDUSTRIAL PARK

5202-5316 South County Road 1180, Midland, TX 79706



Property & Location Description

Introducing a prime leasing opportunity at on East County Road 140 in Midland, TX. This brand-new industrial building construction offers an array of desirable features, including perimeter fencing and its convenient location. With a planned delivery in summer 2024, this property presents an excellent opportunity.

This small Industrial Park is located on County Road 140, in-between Hwy 349 & FM 715 and about 4 miles from I-20.

Offering Summary

Lease Rate (<i>Buildings 6 & 5</i>):	\$17.55 SF/YR (NNN)
Lease Rate (<i>Building 1</i>):	\$18.75 SF/YR (NNN)
Building SF (<i>Buildings 6,5,1</i>):	4,000 SF (each)
Lot Acres (<i>Buildings 6 & 5</i>):	1.006 AC (each)
Lot Acres (<i>Building 1</i>):	1.351 AC

Property Highlights

- 800 SF Office
- 2,400 SF Warehouse
- 800 SF Wash Bay

Trey Dennis
Broker
432.236.7500
trey@moriahgroup.net

MORIAH
BROKERAGE SERVICES, LLC

PRICE: \$17.55 - 18.75 SF/YR

SOUTHERN MEADOWS INDUSTRIAL PARK

5202-5316 South County Road 1180, Midland, TX 79706



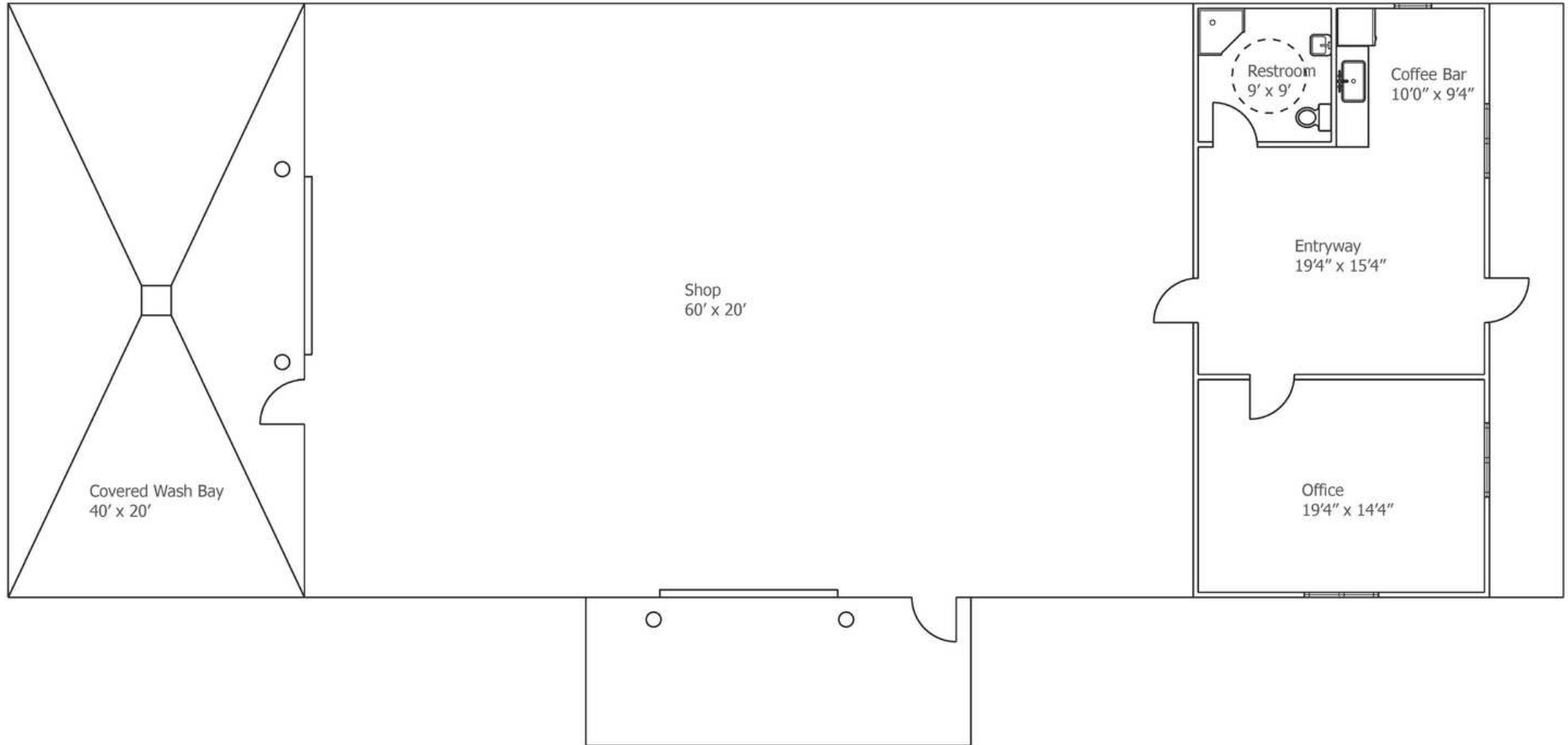
Trey Dennis
Broker
432.236.7500
trey@moriahgroup.net

MORIAH
BROKERAGE SERVICES, LLC

PRICE: \$17.55 - 18.75 SF/YR

FLOOR PLAN

5202-5316 South County Road 1180, Midland, TX 79706



Trey Dennis
Broker
432.236.7500
trey@moriahgroup.net

PRICE: \$17.55 - 18.75 SF/YR

SOUTHERN MEADOWS INDUSTRIAL PARK

5202-5316 South County Road 1180, Midland, TX 79706



Trey Dennis
Broker
432.236.7500
treym@moriahgroup.net

MORIAH
BROKERAGE SERVICES, LLC

SOUTHERN MEADOWS INDUSTRIAL PARK

5202-5316 South County Road 1180, Midland, TX 79706



Contact Broker:

Trey Dennis

Broker
432.236.7500
treym@moriahgroup.net



15 Smith Road, Suite 6004, Midland, TX 79705
432.682.2510 | moriahbrokerageservices.com