

Southgate Shopping Center Dimond & Old Seward



1005 E. Dimond Blvd.

Anchorage, Alaska

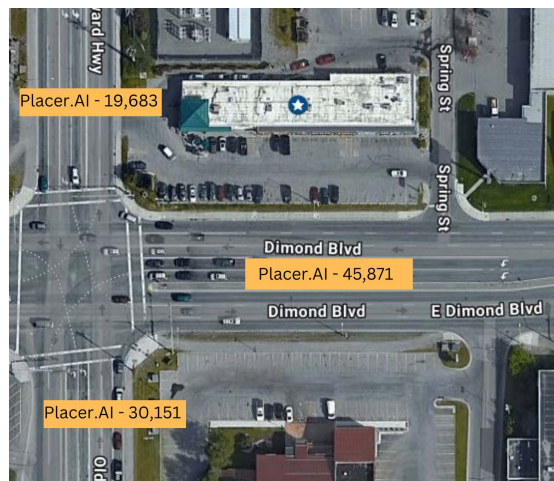
Unit 2B - 1,648 sf

Unit 2C - 1,060 sf

\$3.50 per sf per month
plus full NNN

For Lease - Prime Retail Corner Location in South Anchorage

Retail Center unit at the corner of Dimond Blvd. and Old Seward Highway, one of the busiest intersections in Anchorage, see average daily traffic counts below. Anchored by Starbucks, tenant mix includes food service, retail boutiques and professional office .

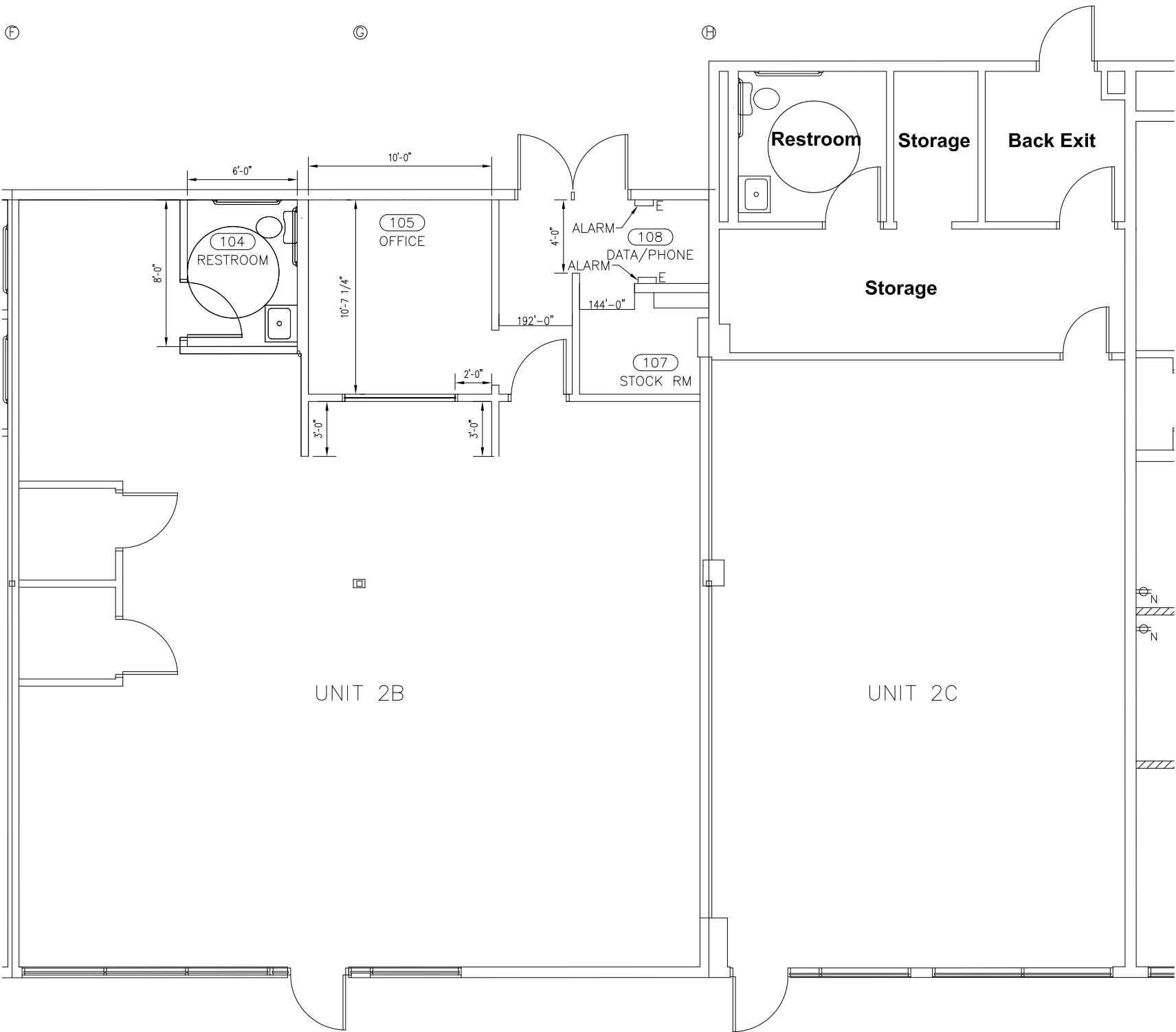


Collin M. Agni
CEO / Broker
Carr & Family Properties, LLC
(907) 952 - 1818
collin@cfpropak.com

F

C

H



UNIT 2B

UNIT 2C

104
RESTROOM

105
OFFICE

107
STOCK RM

108
DATA/PHONE

Restroom

Storage

Back Exit

Storage

ALARM

ALARM

DATA/PHONE

E

E

6'-0"

10'-0"

8'-0"

10'-7 1/8"

2'-0"

3'-0"

3'-0"

192'-0"

4'-0"

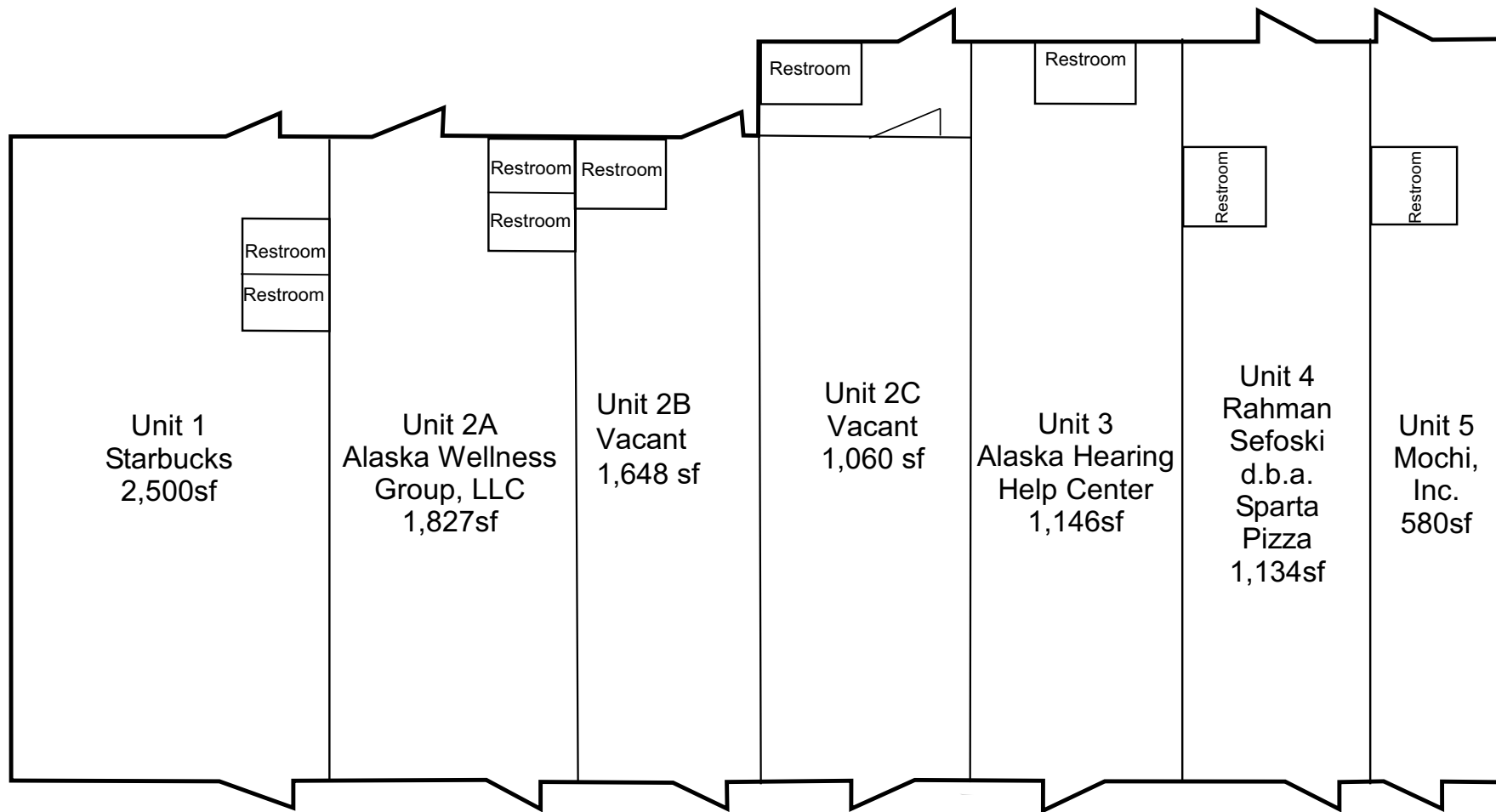
4'-0"

144'-0"

N

N

N



Unit 1
Starbucks
2,500sf

Unit 2A
Alaska Wellness
Group, LLC
1,827sf

Unit 2B
Vacant
1,648 sf

Unit 2C
Vacant
1,060 sf

Unit 3
Alaska Hearing
Help Center
1,146sf

Unit 4
Rahman
Sefoski
d.b.a.
Sparta
Pizza
1,134sf

Unit 5
Mochi,
Inc.
580sf

Restroom
Restroom

Restroom
Restroom

Restroom

Restroom

Restroom

Restroom

Restroom