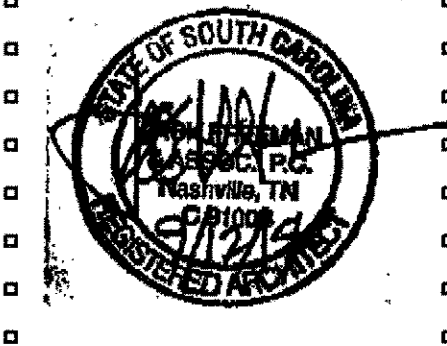
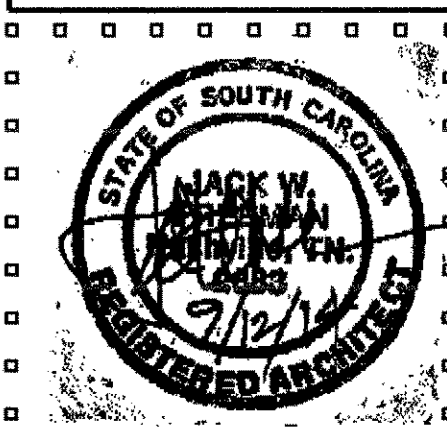


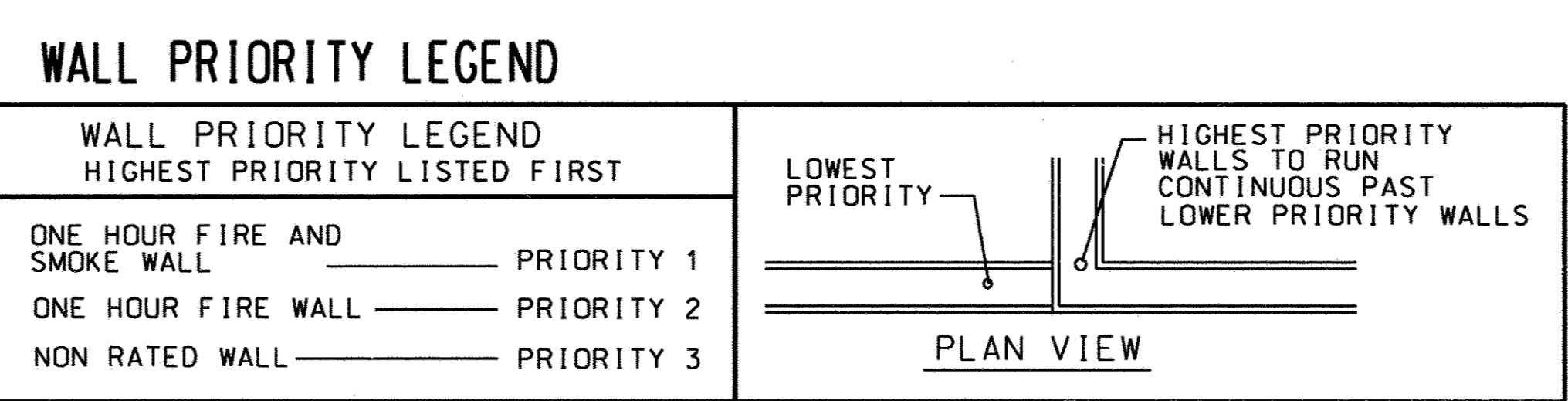
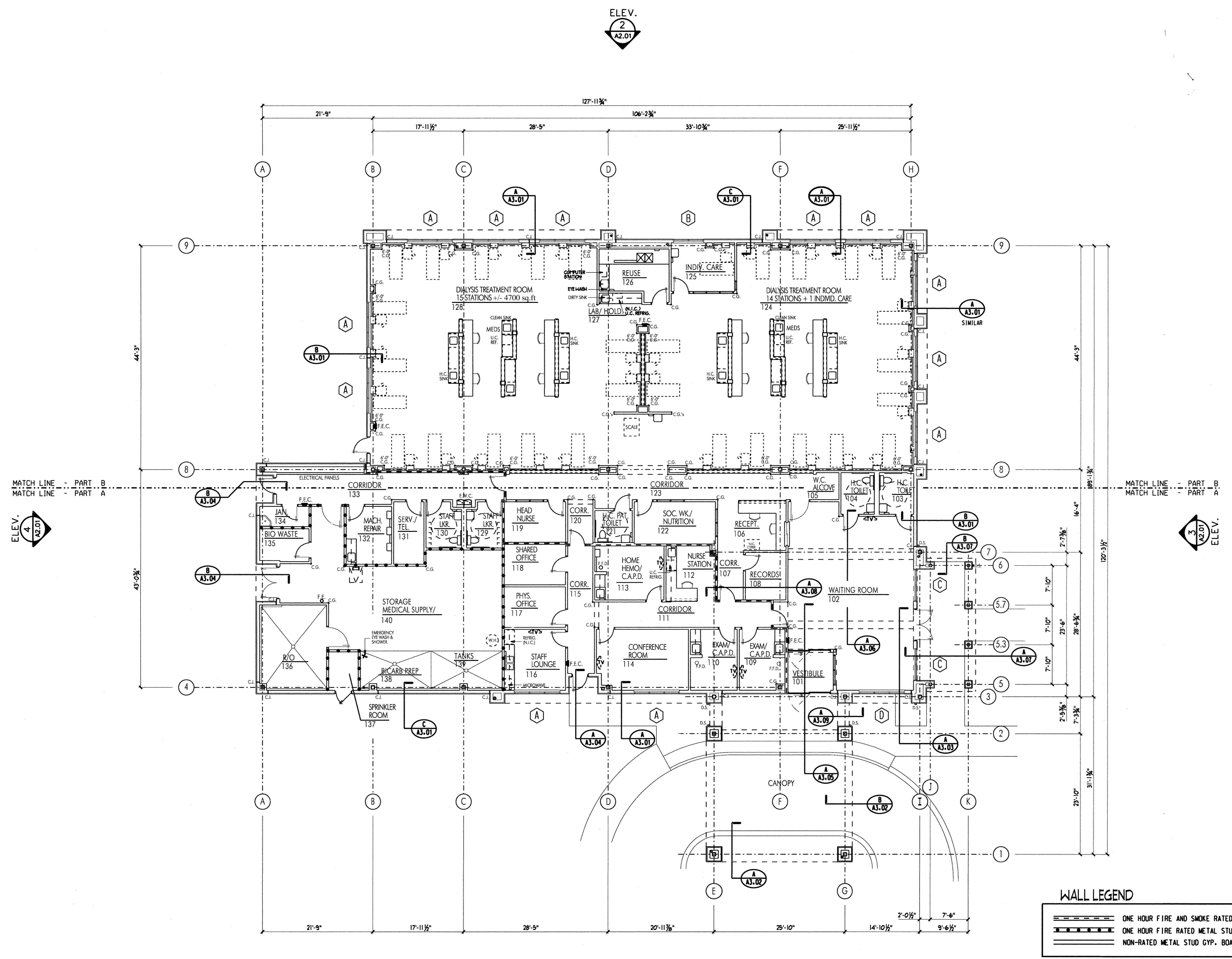
revision:

JACK FREEMAN AND ASSOCIATES P.C.
 ARCHITECTS AND PLANNERS
 311 22nd AVENUE NORTH
 NASHVILLE, TN, 37203
 (615)329-2424

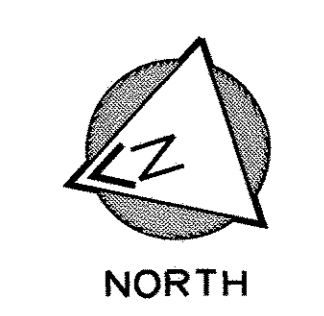
DIALYSIS CLINIC, INC.
 PORT ROYAL, SOUTH CAROLINA
 Dci
 Dialysis Clinic, Inc.
 A Non-Profit Corporation



date	9/12/2014
project no.	30-133
sheet no.	A1.01A
FLOOR PLAN	



FLOOR PLAN
 SCALE: 1/8" = 1'-0"



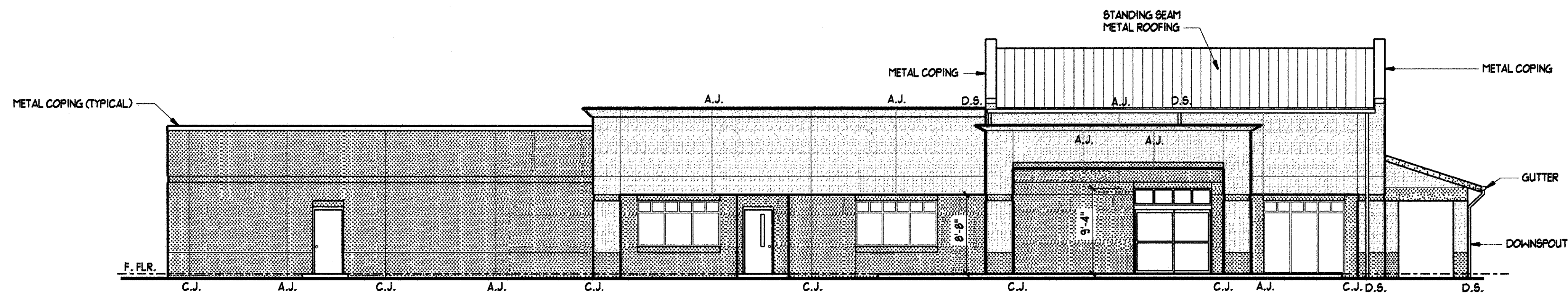
ELEV. 2
A2.01

ELEV. 2
A2.01

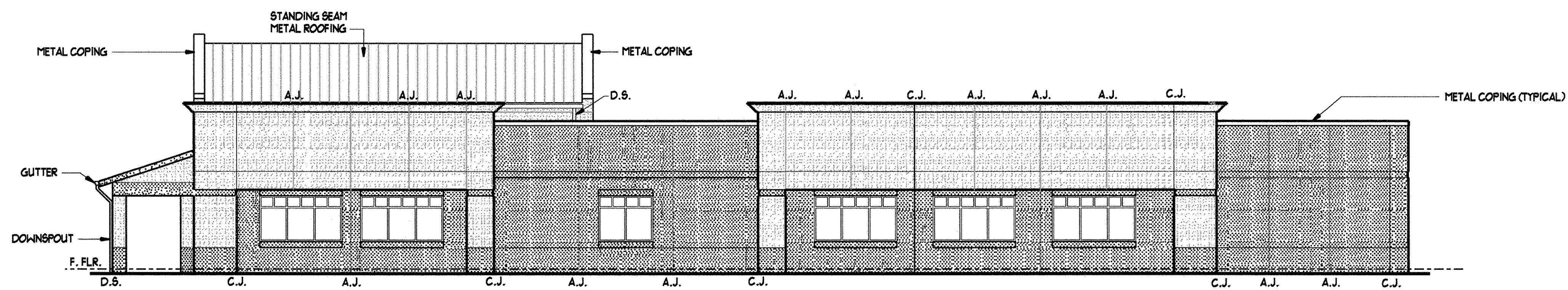
ELEV. 4
A2.01

ELEV. 3
A2.01

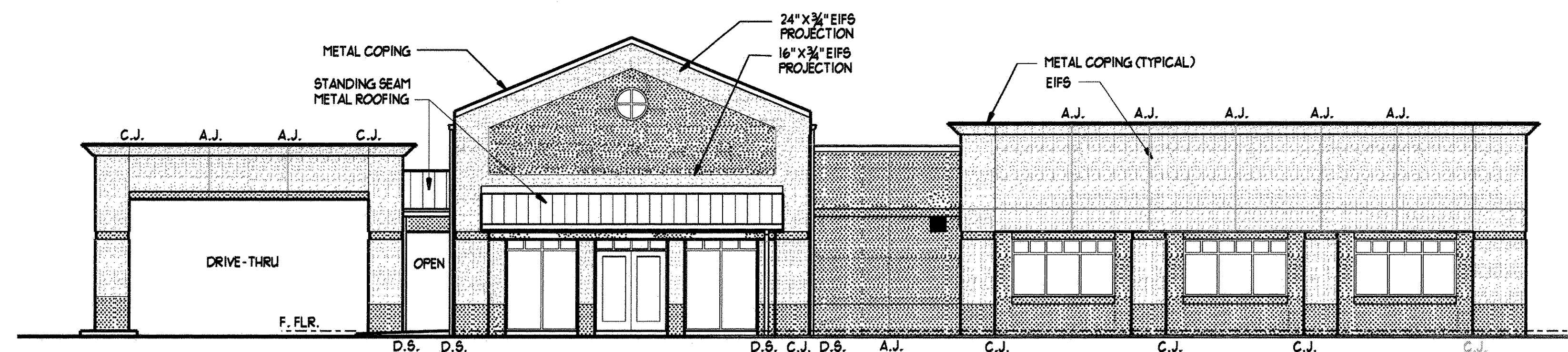
ELEV. 1
A2.01



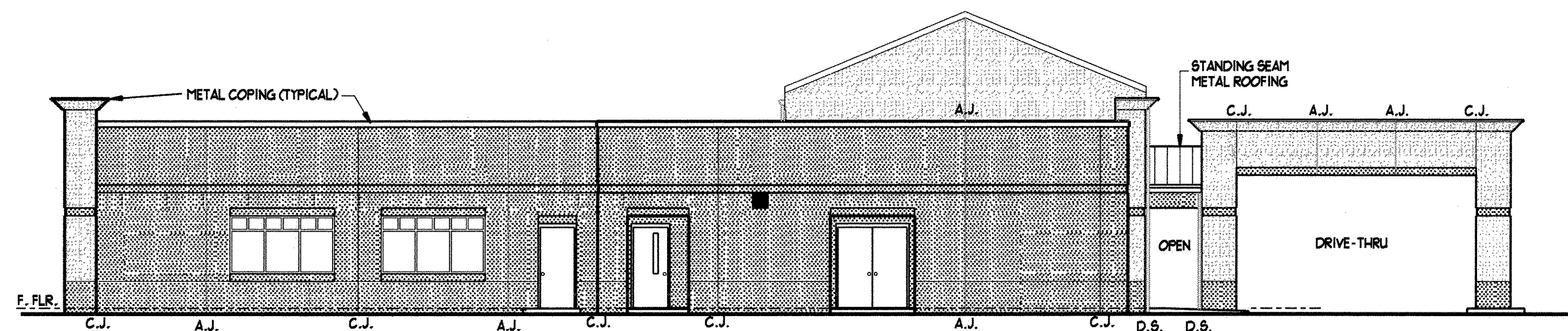
1
2.01
WEST ELEVATION
SCALE: 1/8" = 1'-0"



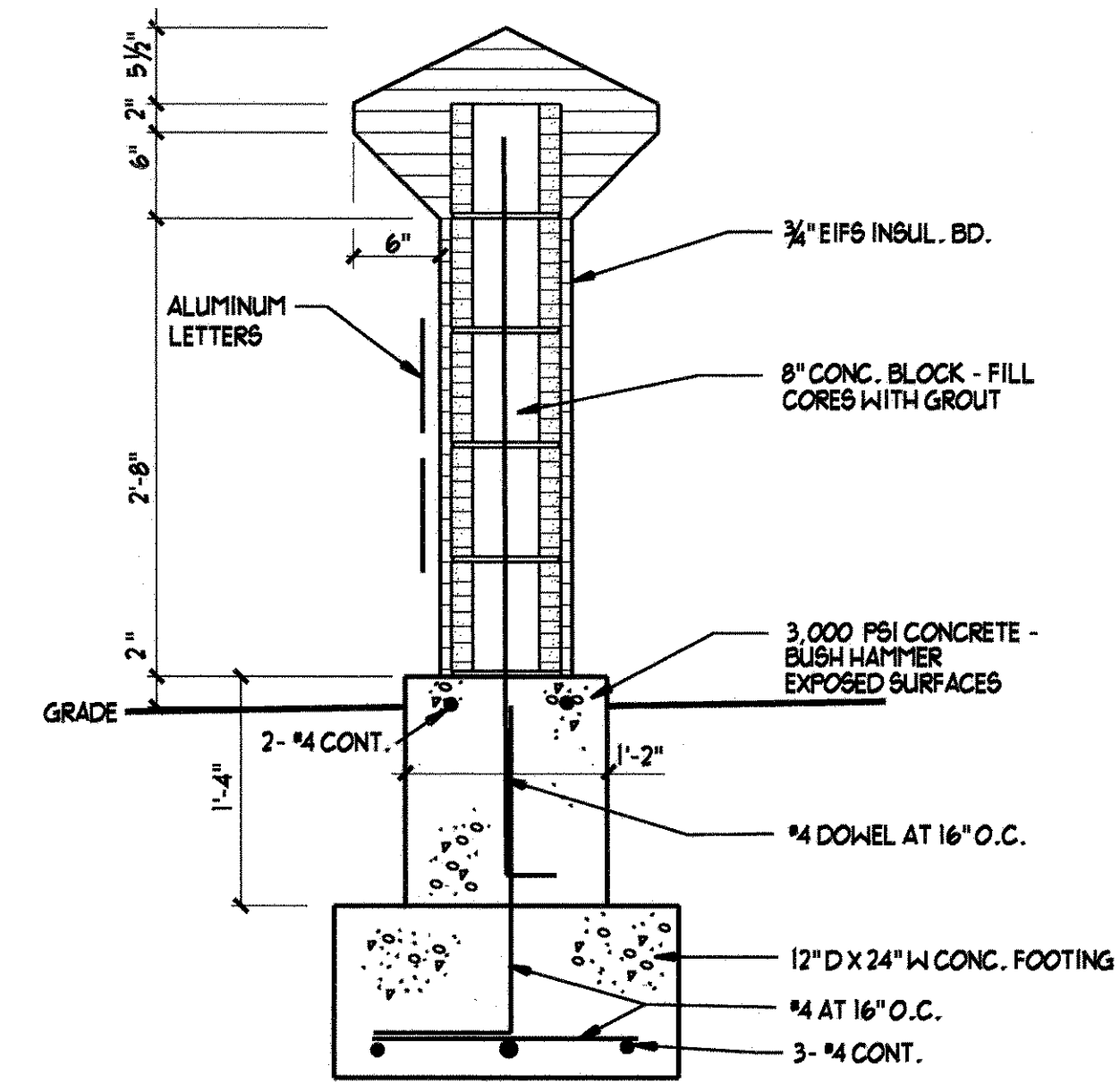
2
2.01
EAST ELEVATION
SCALE: 1/8" = 1'-0"



3
2.01
SOUTH ELEVATION
SCALE: 1/8" = 1'-0"

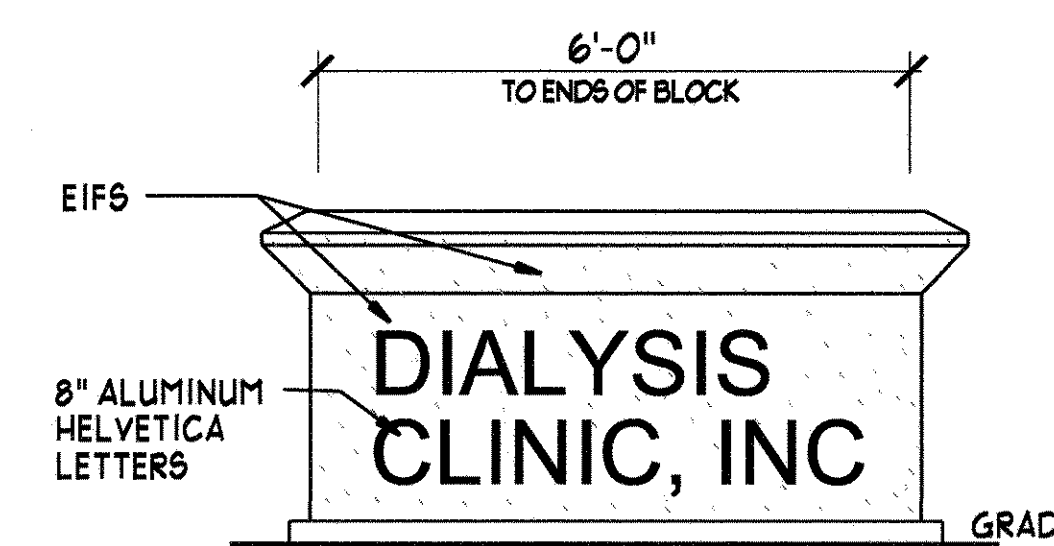


4
2.01
NORTH ELEVATION
SCALE: 1/8" = 1'-0"



BUILDING SIGN SECTION

SCALE: 1" = 1'-0"



BUILDING SIGN ELEVATION

SCALE: 1/2" = 1'-0"

— SEE SITE PLAN FOR LOCATION —

EXTERIOR COLOR SELECTIONS:

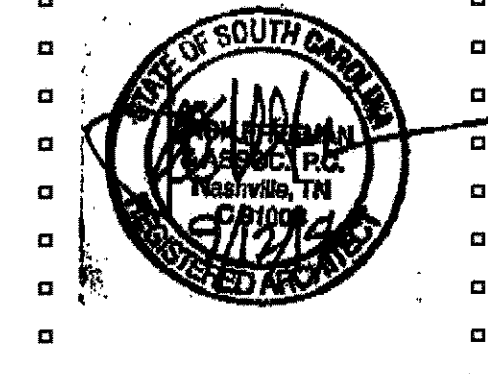
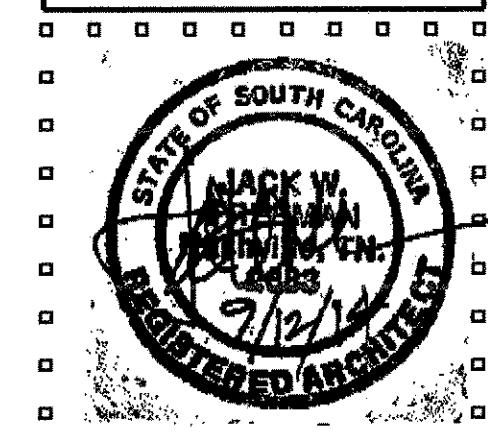
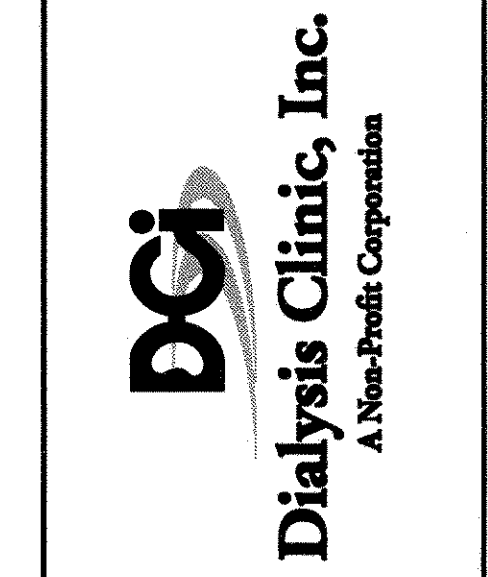
E.I.F.S. COLOR NO. ONE
DRYVIT NO. 442 COTTON

E.I.F.S. COLOR NO. TWO
DRYVIT NO. 381 MONASTERY BROWN

revision:

JACK FREEMAN AND ASSOCIATES P.C.
ARCHITECTS AND PLANNERS
311 22nd AVENUE NORTH
NASHVILLE, TN, 37203
(615) 329-2424

DIALYSIS CLINIC, INC.
PORT ROYAL, SOUTH CAROLINA



EXTERIOR ELEVATIONS

SCALE: 1/8" = 1'-0"

date	9/12/2014
project no.	30-133
sheet no.	A2.01
EXTERIOR ELEVATIONS	