



Endcap of Class A Medical Office Available

4620 Rogers Avenue, Suite 101
Fort Smith, Arkansas

For more information, contact:

Steven P. Lane

Principal & Managing Director
+1 479 366 6000
steve.lane@ar.colliers.com

Mason Wood

Brokerage | Arkansas
+1 479 409 0409
mason.wood@ar.colliers.com

Robert Wardlaw

Brokerage Associate
+1 501 944 5213
robert.wardlaw@ar.colliers.com



4620 Rogers Avenue, Suite 101

Property Details

SIZE	2,400 SF
ASKING RENT	Upon Request
LEASE EXPIRATION DATE	01/31/2033
NEIGHBORING TENANTS	Central Mall, Walmart Neighborhood Market, Diamond Center & MedExpress
COMMENTS	Monument Signage Available
	Endcap of multi-tenant building with prime frontage on Rogers Ave.

For more information, contact:

Steven P. Lane

Principal & Managing Director
+1 479 366 6000
steve.lane@ar.colliers.com

Mason Wood

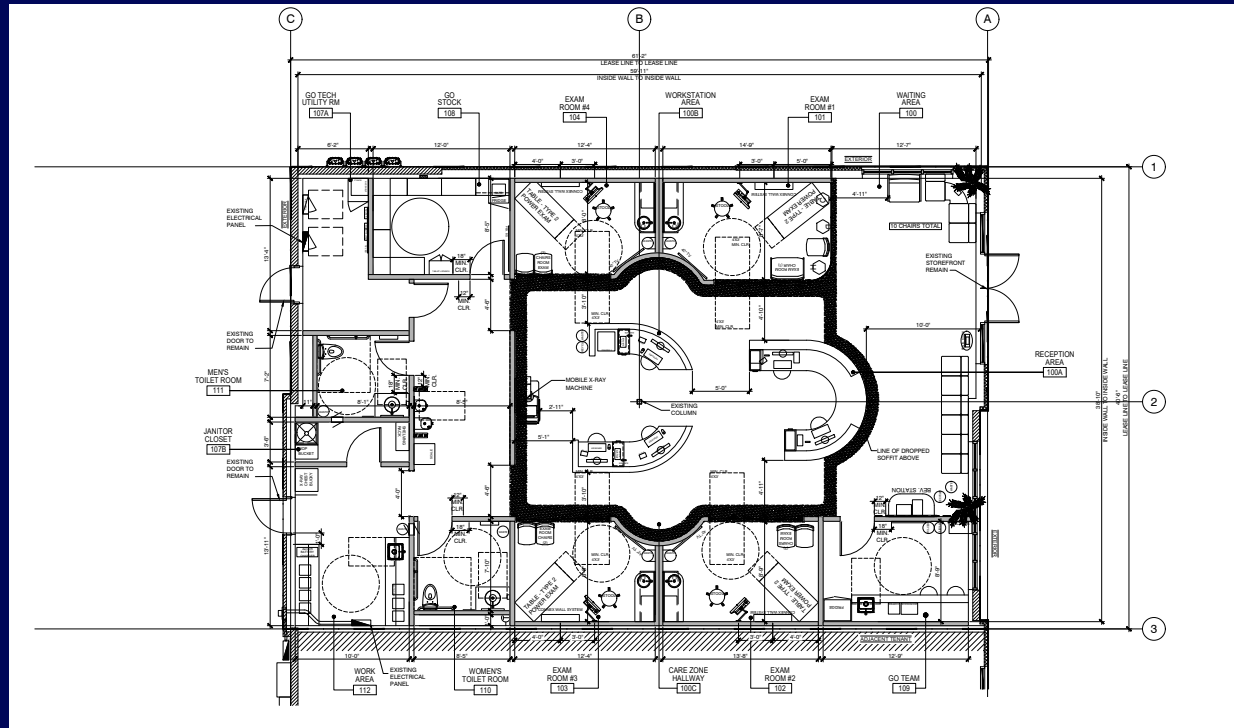
Brokerage | Arkansas
+1 479 409 0409
mason.wood@ar.colliers.com

Robert Wardlaw

Brokerage Associate
+1 501 944 5213
robert.wardlaw@ar.colliers.com



Floor Plan

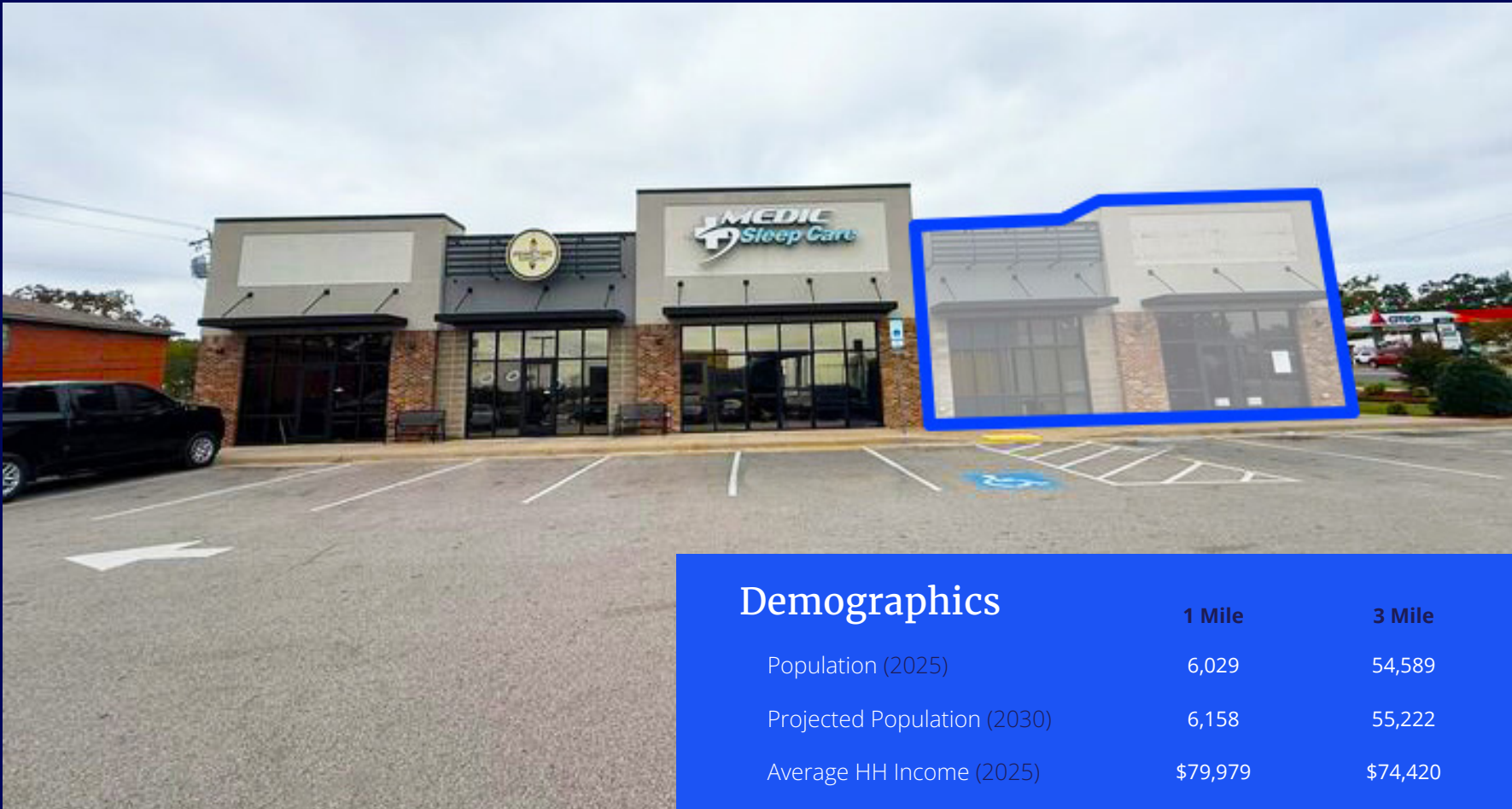


For more information, contact:

Steven P. Lane
Principal & Managing Director
+1 479 366 6000
steve.lane@ar.colliers.com

Mason Wood
Brokerage | Arkansas
+1 479 409 0409
mason.wood@ar.colliers.com





Demographics

	1 Mile	3 Mile	5 Mile
Population (2025)	6,029	54,589	88,010
Projected Population (2030)	6,158	55,222	88,979
Average HH Income (2025)	\$79,979	\$74,420	\$76,539
Households (2025)	2,930	22,817	36,371
Projected Households (2030)	2,993	23,248	37,034

For more information, contact:

Steven P. Lane

Principal & Managing Director
 +1 479 366 6000
 steve.lane@ar.colliers.com

Mason Wood

Brokerage | Arkansas
 +1 479 409 0409
 mason.wood@ar.colliers.com

