

# Sublease Available

**2300 Yonge Street  
Toronto ON**

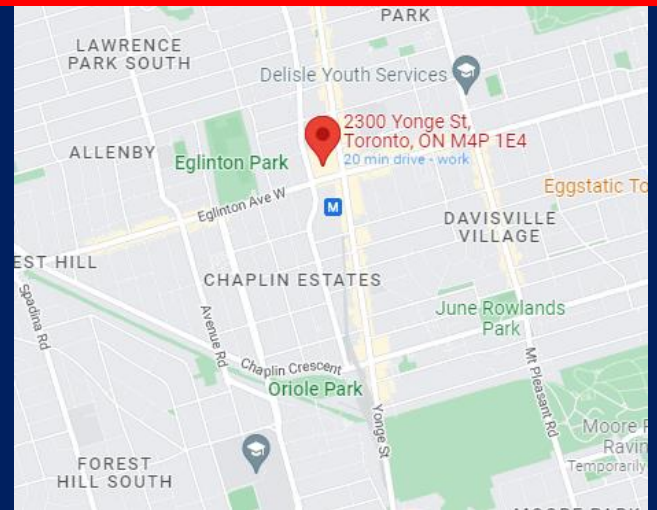
**\$2.50 PSF PER ANNUM CO-OP FEE**

## Space Profile

<b>Premises</b>	28 <sup>th</sup> Floor – Suite 2800 Full 18 <sup>th</sup> Floor
<b>Total Rentable Area</b>	28 <sup>th</sup> Floor - 10,518 SF 18 <sup>th</sup> Floor – 16,032 SF
<b>Net Rent</b>	Contact Listing Agents
<b>Additional Rent</b>	\$25.60 (Plus Utilities)
<b>Availability</b>	Immediate
<b>Term</b>	April 29, 2026

## Features

- Great mix of open plan space (individual and team) and closed spaces for 2-18 people
- 10,518 SF or 16,032 SF or 26,550 SF
- Furniture Included
- The Yonge Eglinton Centre is midtown Toronto's hub at Yonge & Eglinton, consisting of two office towers and a multi-level retail facility with direct access to the TTC's Yonge – University Subway Line and the future Eglinton Crosstown LRT.
- On-site Parking 1:1,850 sq. ft - Free Valet Parking for Tenants
- Secure Underground Bicycle Storage and Exclusive Showers For Tenants
- Elevated Outdoor Patio



**Mark Tittleman**  
Vice President,  
Sales Representative  
647.847.6219  
mtittleman@cresa.com



**Gordon Bard**  
Vice President,  
Sales Representative  
647.777.7392  
gbard@cresa.com

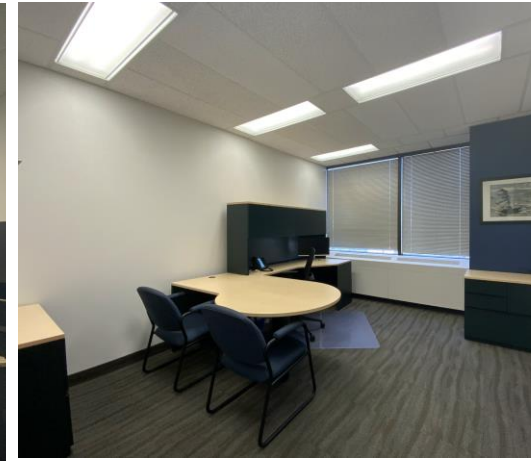
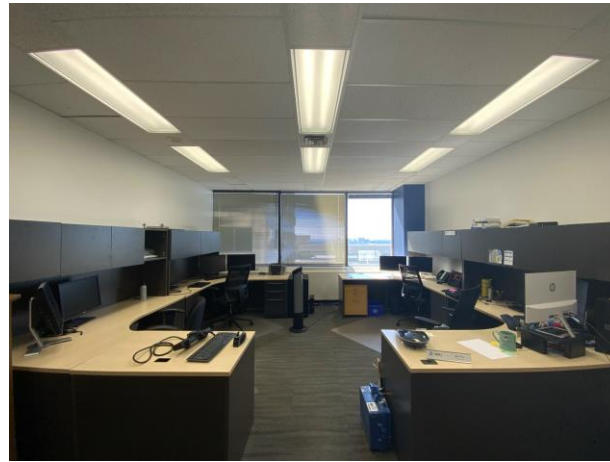
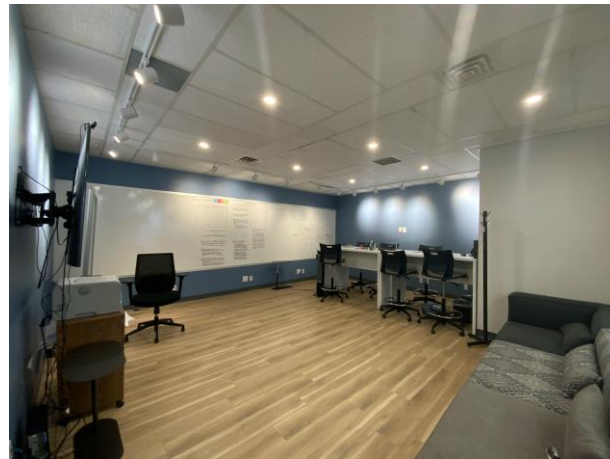
**18<sup>th</sup>  
FLOOR**

**VIEW THE  
VIRTUAL TOUR 360°**

**28<sup>th</sup>  
FLOOR**

**VIEW THE  
VIRTUAL TOUR 360°**

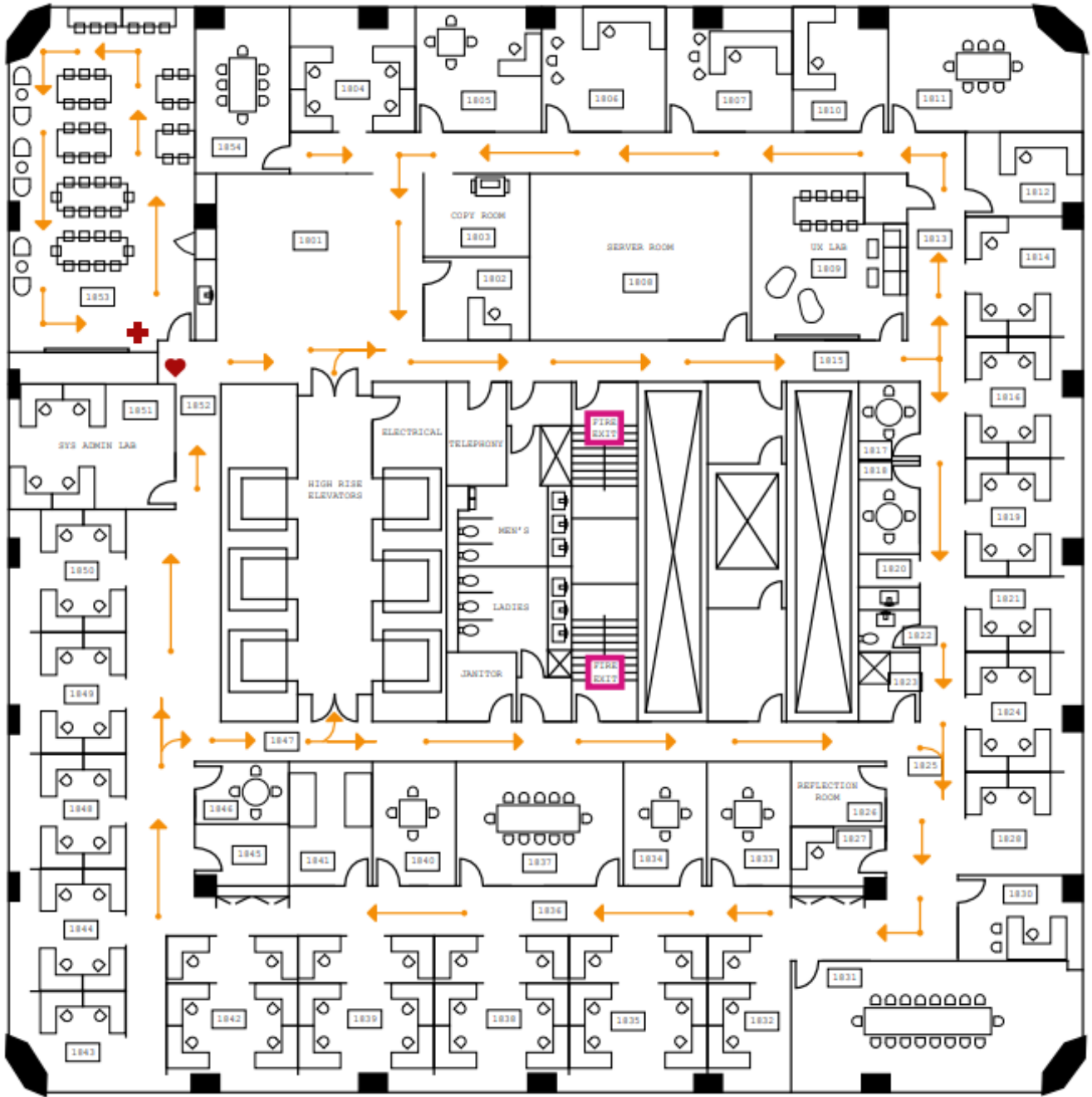
Even though obtained from sources deemed reliable, no warranty or representation, express or implied, is made as to the accuracy of the information herein, and it is subject to errors, omissions, change of price, rental or other conditions, withdrawal without notice, and to any special listing conditions imposed by our principals.



**Mark Titleman**  
Vice President,  
Sales Representative  
647.847.6219  
mtitleman@cresa.com



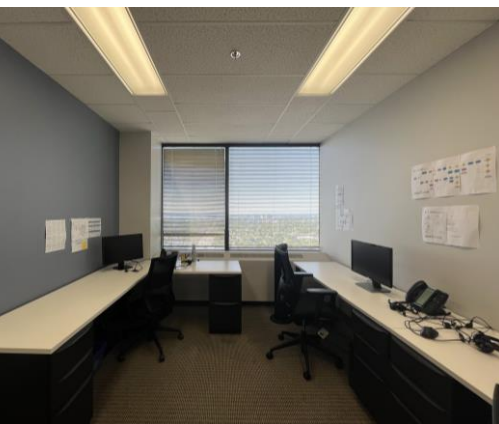
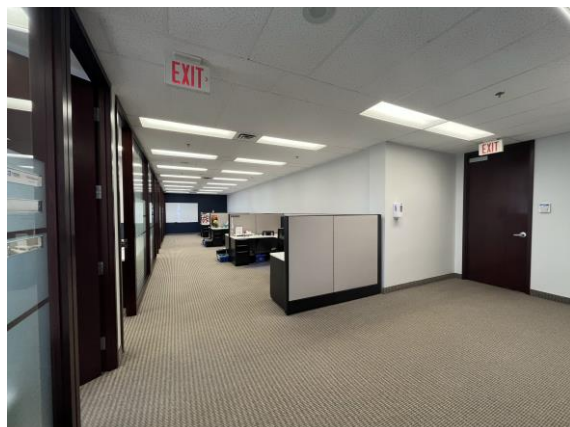
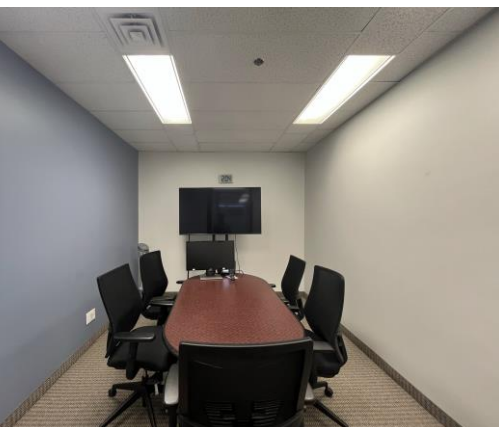
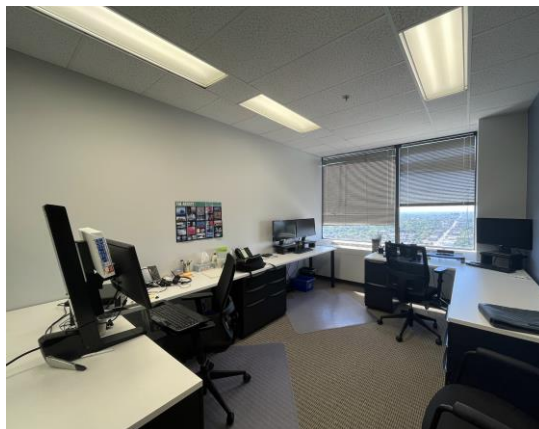
**Gordon Bard**  
Vice President,  
Sales Representative  
647.777.7392  
gbard@cresa.com



**Mark Titleman**  
Vice President,  
Sales Representative  
647.847.6219  
mtitleman@cresa.com



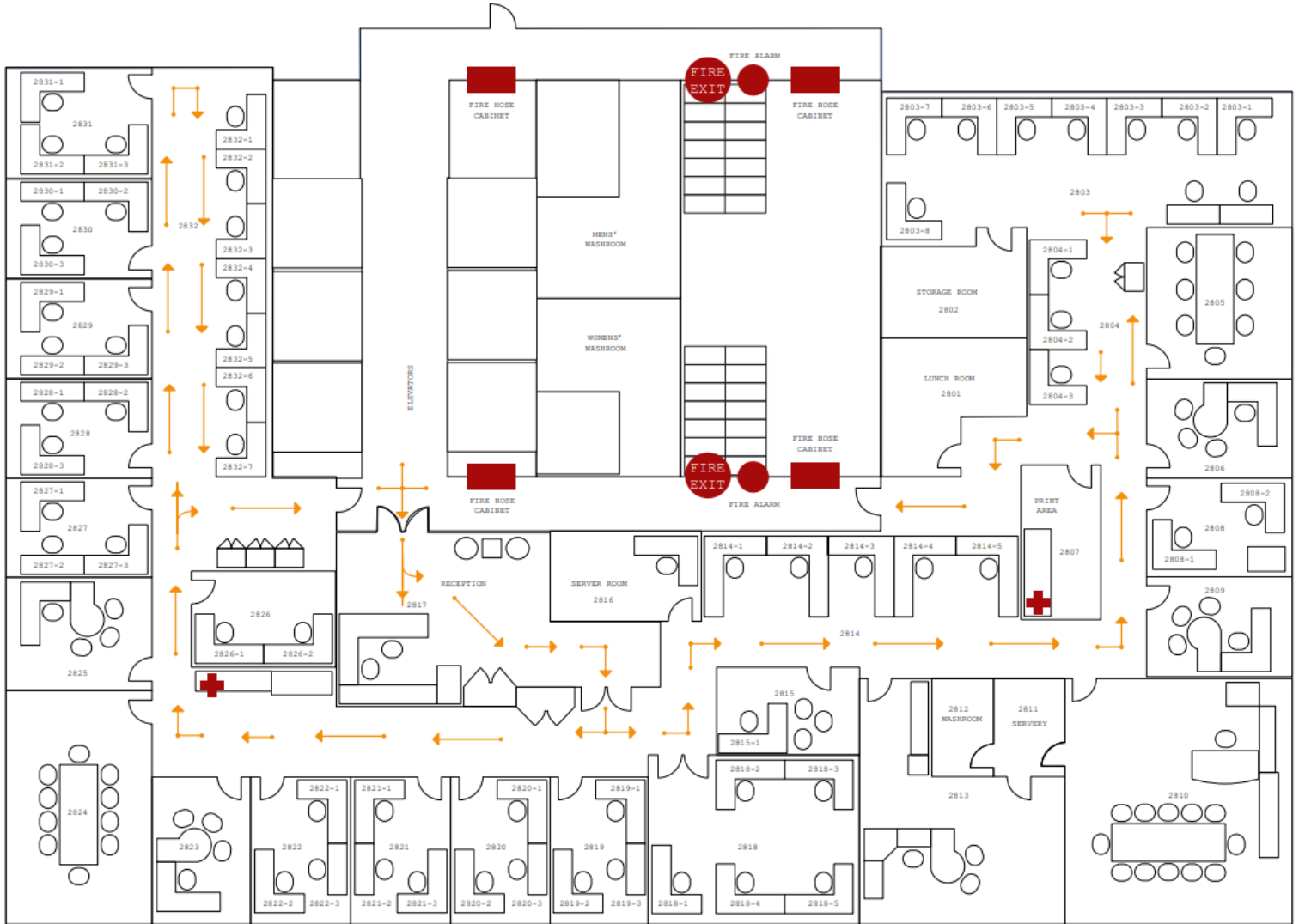
**Gordon Bard**  
Vice President,  
Sales Representative  
647.777.7392  
gbard@cresa.com



**Mark Titleman**  
Vice President,  
Sales Representative  
647.847.6219  
mtitleman@cresa.com



**Gordon Bard**  
Vice President,  
Sales Representative  
647.777.7392  
gbard@cresa.com



**Mark Titleman**  
Vice President,  
Sales Representative  
647.847.6219  
mtitleman@cresa.com



**Gordon Bard**  
Vice President,  
Sales Representative  
647.777.7392  
gbard@cresa.com