

IMMEDIATE

AVAILABILITY

FOR LEASE

WAREHOUSE

11,498 Sq. Ft. Divisible to 932 Sq. Ft

2501 Deborah Avenue, Zion IL.

RRD REALTY LLC

COMMERCIAL REAL ESTATE



Building Specifications:

- ◆ 11,498 SF Divisible to 932 SF
- ◆ 1,200 Amps of Power
- ◆ Recently Remodeled
- ◆ Shared access to Loading Docks
- ◆ Masonry Construction
- ◆ Fire Sprinklered Space
- ◆ Air-Conditioned Offices
- ◆ Lease Rate: \$7.95 NET
- ◆ Tax & CAM: \$1.75 PSF
- ◆ Parking Ratio: 3/1,000

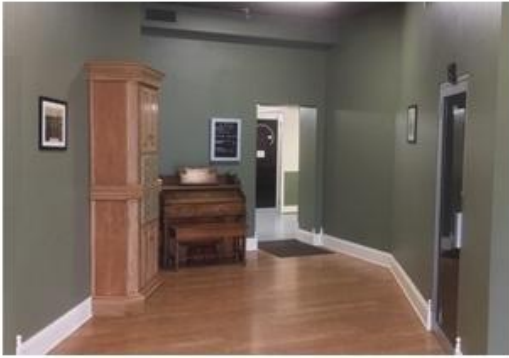
Contact Us

Rick Delisle
847 812 8180
rrdrealty@gmail.com



RRD Realty LLC
2501 Deborah Avenue
Zion IL. 60099

2501 Deborah Avenue, Zion IL



Building Layout

Lease Rates

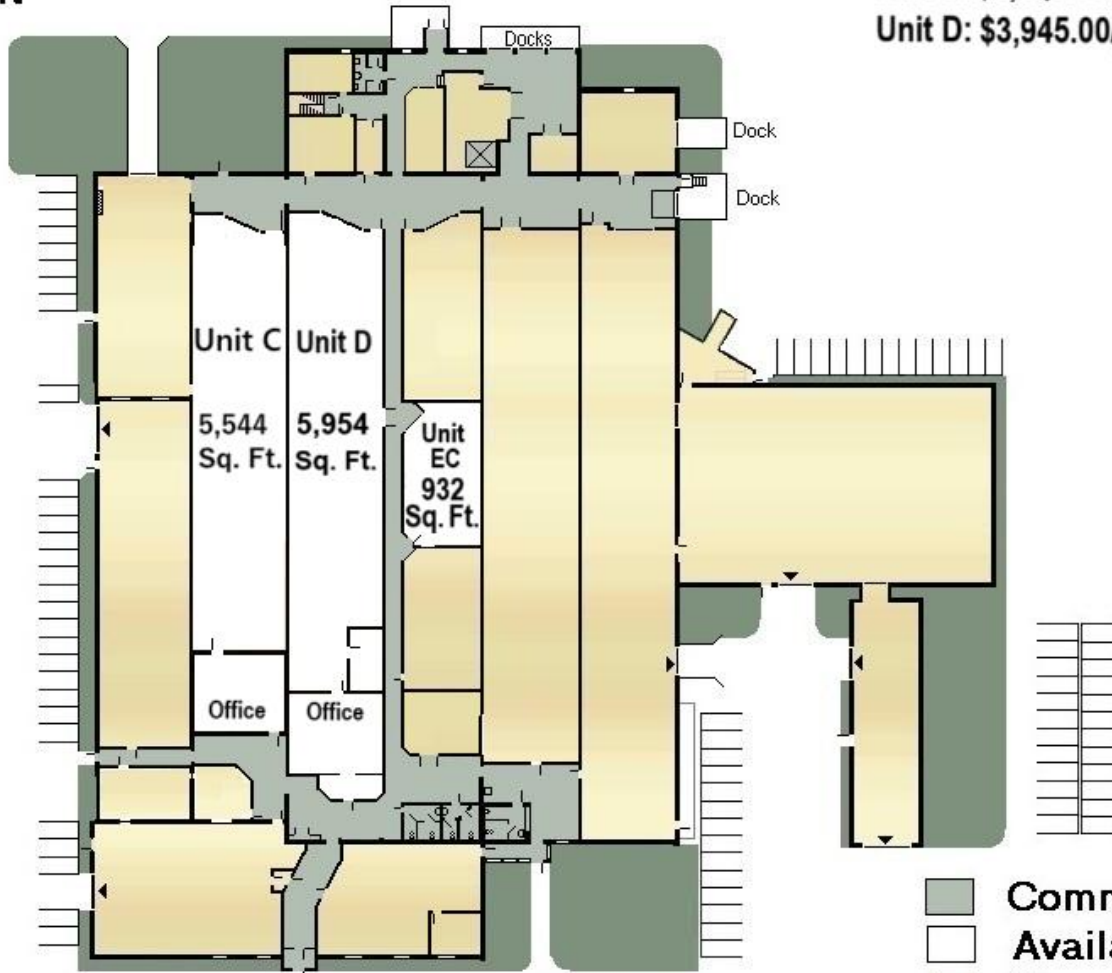
Unit EC: \$855.00/Mo.

Unit C: \$3,673.00/Mo.

Unit D: \$3,945.00/Mo.

← N

Shiloh Blvd.



Not to Scale

- Common Areas
- Available Units
- Occupied space

Deborah Avenue

Rick Delisle
847 812 8180
rdelisle@RDstrategic.com

RRD Realty LLC
2501 Deborah Ave.
Zion IL. 60099

No warranty or representation is made with respect to the accuracy of the information contained in this brochure. Terms of a sale or lease or availability are subject to change or withdrawal without notice. (Owned by a related entity of the Broker.)