



CHANDLER MEDICAL PAVILION II AT ALMA | 202



Brand New Medical Office Development Adjacent to Loop 202 and Banner Ocotillo Medical Center

DEVELOPED BY



REPRESENTED BY

RACHAEL THOMPSON
602.513.5122
rachael.thompson@kidder.com

PERRY GABUZZI, CCIM
602.513.5116
perry.gabuzzi@kidder.com





550 FEET OF LOOP
202 FRONTAGE

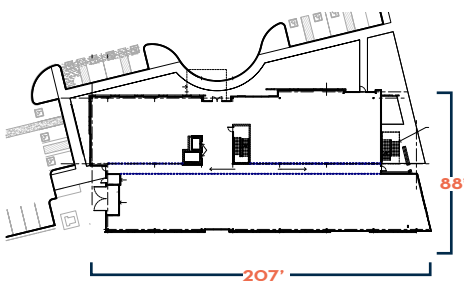


PYLON, MONUMENT
AND BUILDING
SIGNAGE AVAILABLE

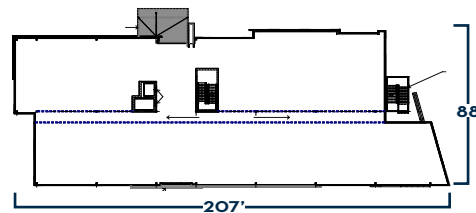


CLASS A MEDICAL OFFICE BUILDING IN PRIME CHANDLER LOCATION

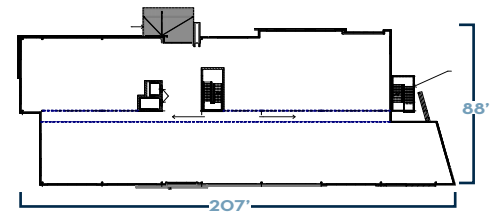
- > ±51,000 SF three-story building, new construction
- > 17,000 SF floor plates divisible to 2,500 SF
- > Comprehensive sign plans available
- > Generous Tenant Improvement packages available
- > Direct access to Loop 202 + Loop 202 frontage
- > Functional/efficient floor plates
- > Adjacent to Chandler Medical Pavilion I, a 65,931 SF medical office building completed in 2021 and currently leased to Banner Health
- > Open to all medical uses - no ground lease restrictions



FIRST FLOOR



SECOND FLOOR

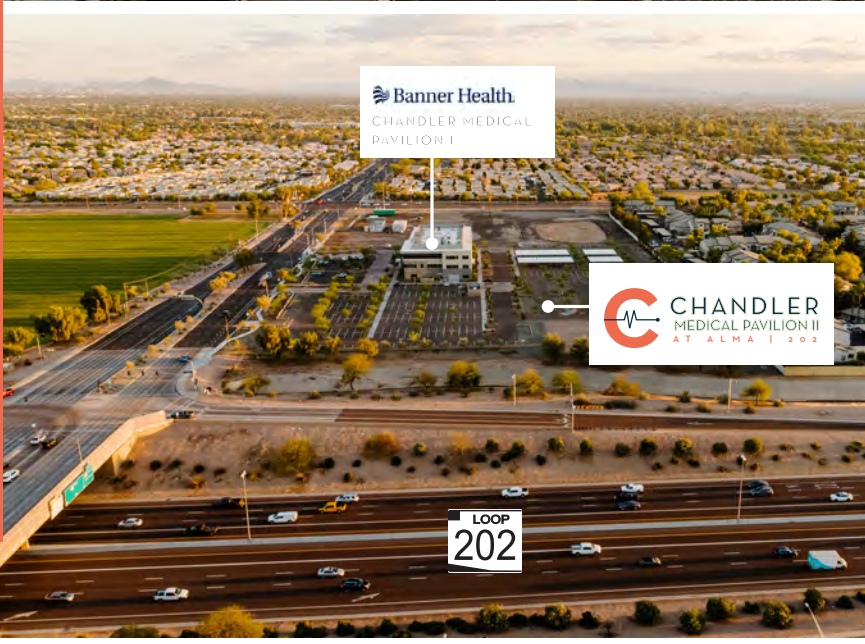


THIRD FLOOR



LOCATED ADJACENT TO BANNER OCOTILLO MEDICAL CENTER

Banner Ocotillo is the **newest Banner Hospital**, servicing the Chandler community and surrounding area. The hospital has **124 beds** with **ample space for future growth**. The hospital offers key inpatient and outpatient services, such as emergency care, intensive care, endoscopy, cardiac catheterization, imaging, surgical and women’s services.



The **four-story, 240,000-square-foot hospital** is located on the southeast corner of Alma School Road and the Loop 202/Santan Freeway. It is **adjacent to an existing Banner Health Center** and is part of an expanding medical community that Banner Health is building in Chandler.



Chandler Medical Pavilion I



Banner Ocotillo Medical Center



ALMA 202 is a $\pm 81,000$ SF medical office project with service retail located at the NEC of Alma School Road and Loop 202 in Chandler, Arizona. ALMA 202 will be home to over $\pm 81,000$ SF of medical office space across 3 buildings. Phase I, consisting of $\pm 5,931$ SF medical office space was completed in July 2021 and is fully leased to Banner Health on a long-term basis. Phase II will consist of a $\pm 51,000$ SF medical office building with Loop 202 frontage and is scheduled to break ground Q2 2024. Phase III will consist of a $\pm 64,500$ SF medical office building. The corner of Pecos Rd & Alma School Rd will be home to over $\pm 20,000$ SF of retail to serve the 3 medical office buildings.

Why Medical in Chandler?



2 HOSPITALS
NEAR CHANDLER MEDICAL
PAVILION



**IN THE TOP BEST
PLACES TO LIVE**
IN THE UNITED STATES



55.6%
POPULATION GROWTH
SINCE 2000



**FOR LEASING
INFORMATION CONTACT**

RACHAEL THOMPSON
602.513.5122 | rachael.thompson@kidder.com

PERRY GABUZZI, CCIM
602.513.5116 | perry.gabuzzi@kidder.com

This information supplied herein is from sources we deem reliable. It is provided without any representation, warranty or guarantee, expressed or implied as to its accuracy. Prospective Buyer or Tenant should conduct an independent investigation and verification of all matters deemed to be material, including, but not limited to, statements of income and expenses. Consult your attorney, accountant, or other professional advisor.

