



## 3029 S. Sherwood Forest Blvd

Baton Rouge, LA 70816

### Property Features

- C.J. Brown Building on Sherwood Forest Blvd
- Great Location
- Quick Access to I-12
- Quiet Atmosphere for Office Space
- Ample Parking
- 4/1000 Parking Ratio

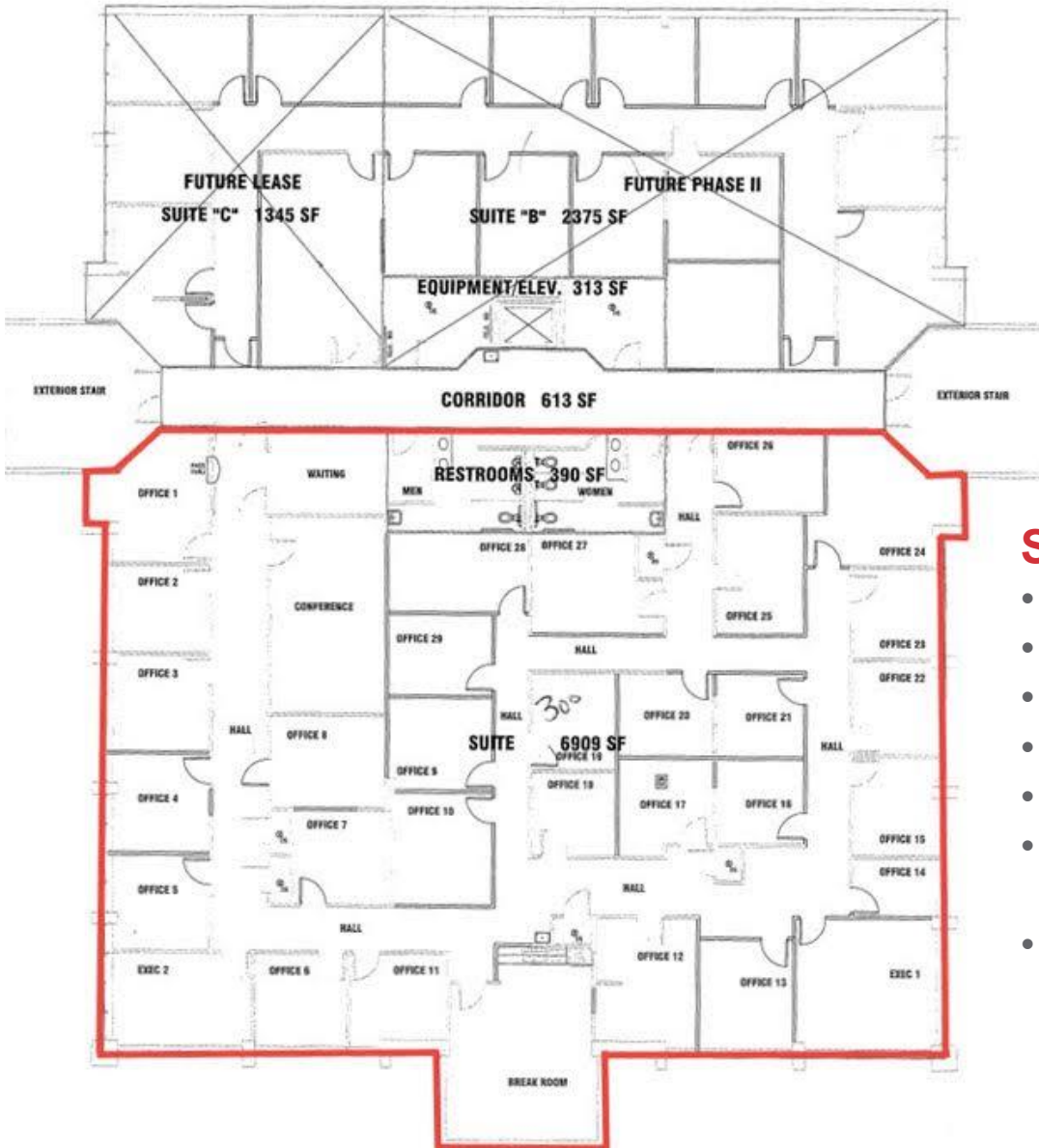
**Ty Gose, CCIM**

Ty@latterblum.com  
225.295.0800

**Erin Caballero**

Erinc@latterblum.com  
225.241.6530

## Suite 300- 3<sup>rd</sup> Floor



### Suite 300

- 3<sup>rd</sup> floor
- Approx. 6,909 SF
- \$16.00 PSF
- **Full Service Lease**
- 29 Offices
- Large Conference Room
- Load Factor = 15%

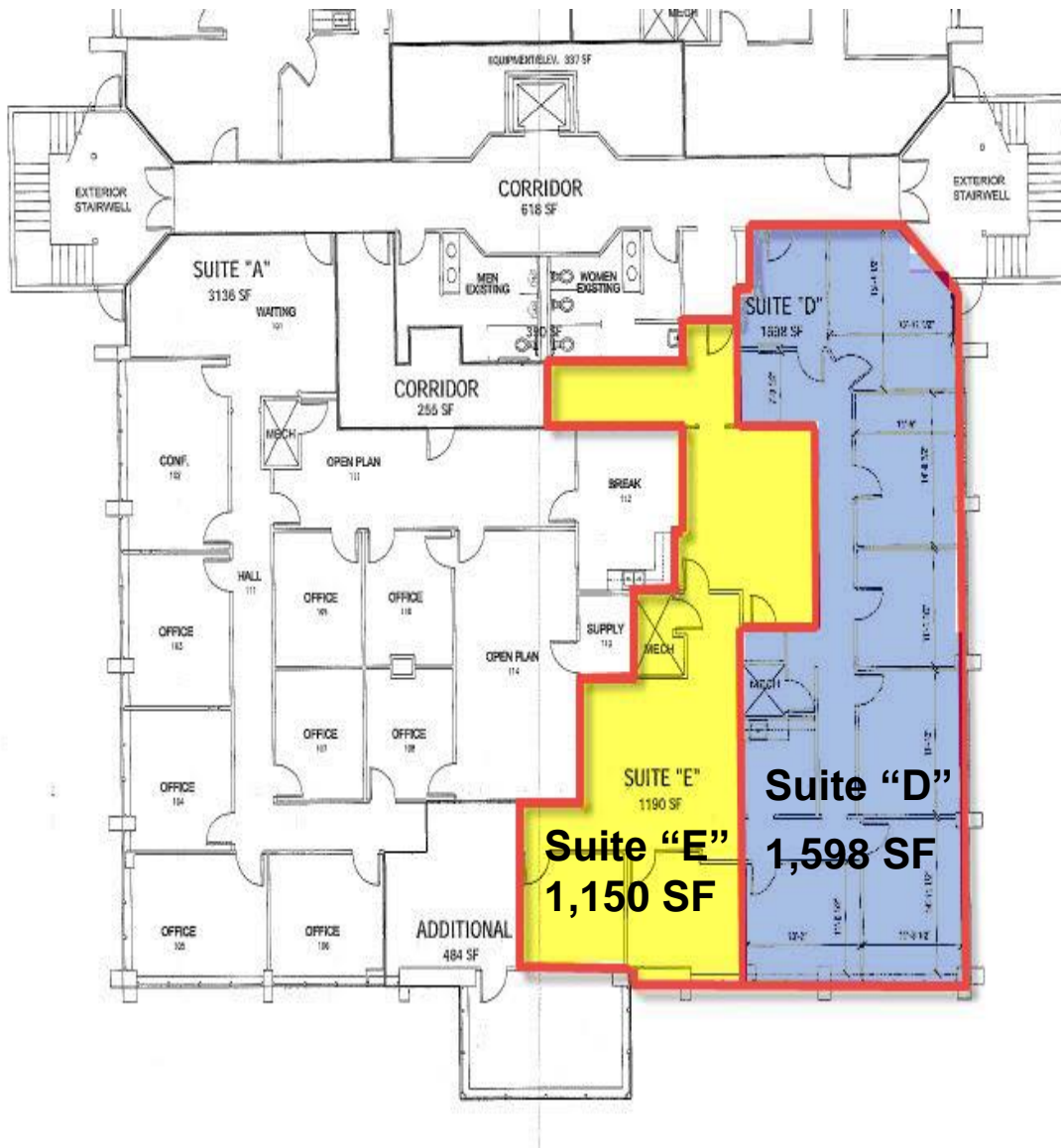
Ty Gose, CCIM

Ty@latterblum.com  
225.295.0800

Erin Caballero

Erinc@latterblum.com  
225.241.6530

## Suite E & D – Ground Floor



### Suite E & D

- Ground Floor
- Approx. 1,150 SF
- \$15.65 PSF
- \$1,500/month **Full Service**
- Possibly combined with Suite D for total of 2,900 SF (\$3800/mth **Full Service**)

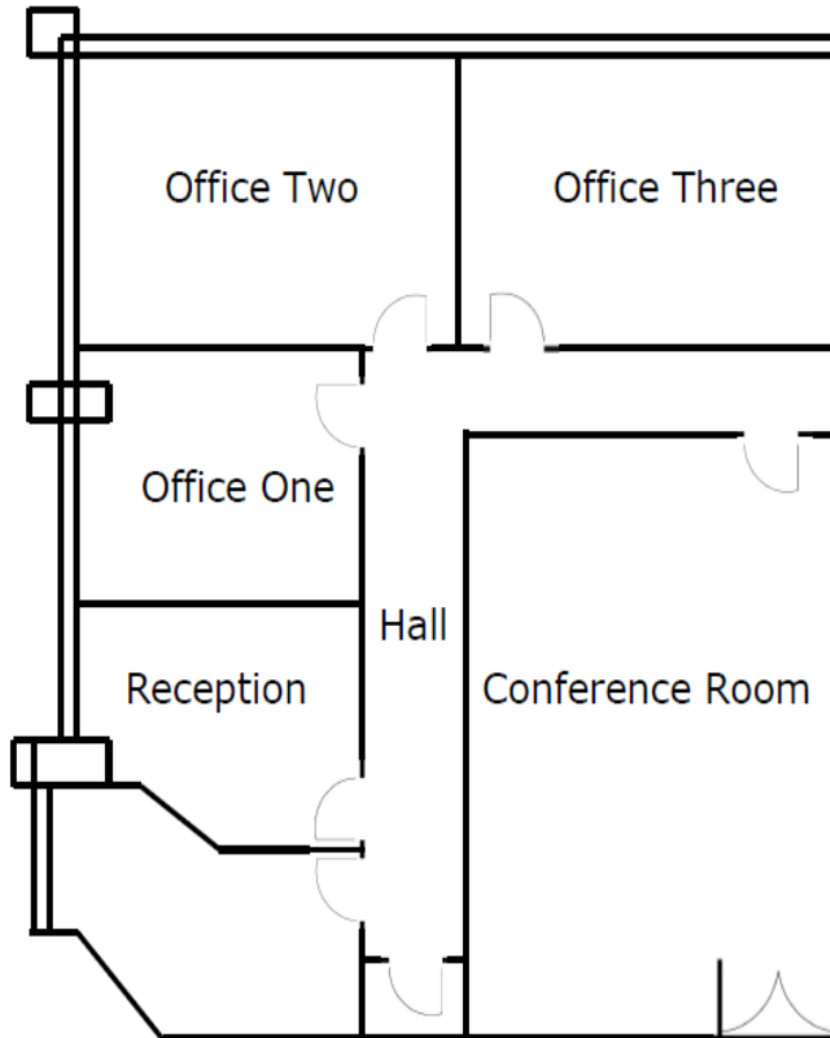
Ty Gose, CCIM

Ty@latterblum.com  
225.295.0800

Erin Caballero

Erinc@latterblum.com  
225.241.6530

## Suite 325 – 3rd floor



### Suite 325

- 3rd Floor
- Approx. 1,345 SF
- \$16.05 PSF
- \$1,800/month **Full Service**

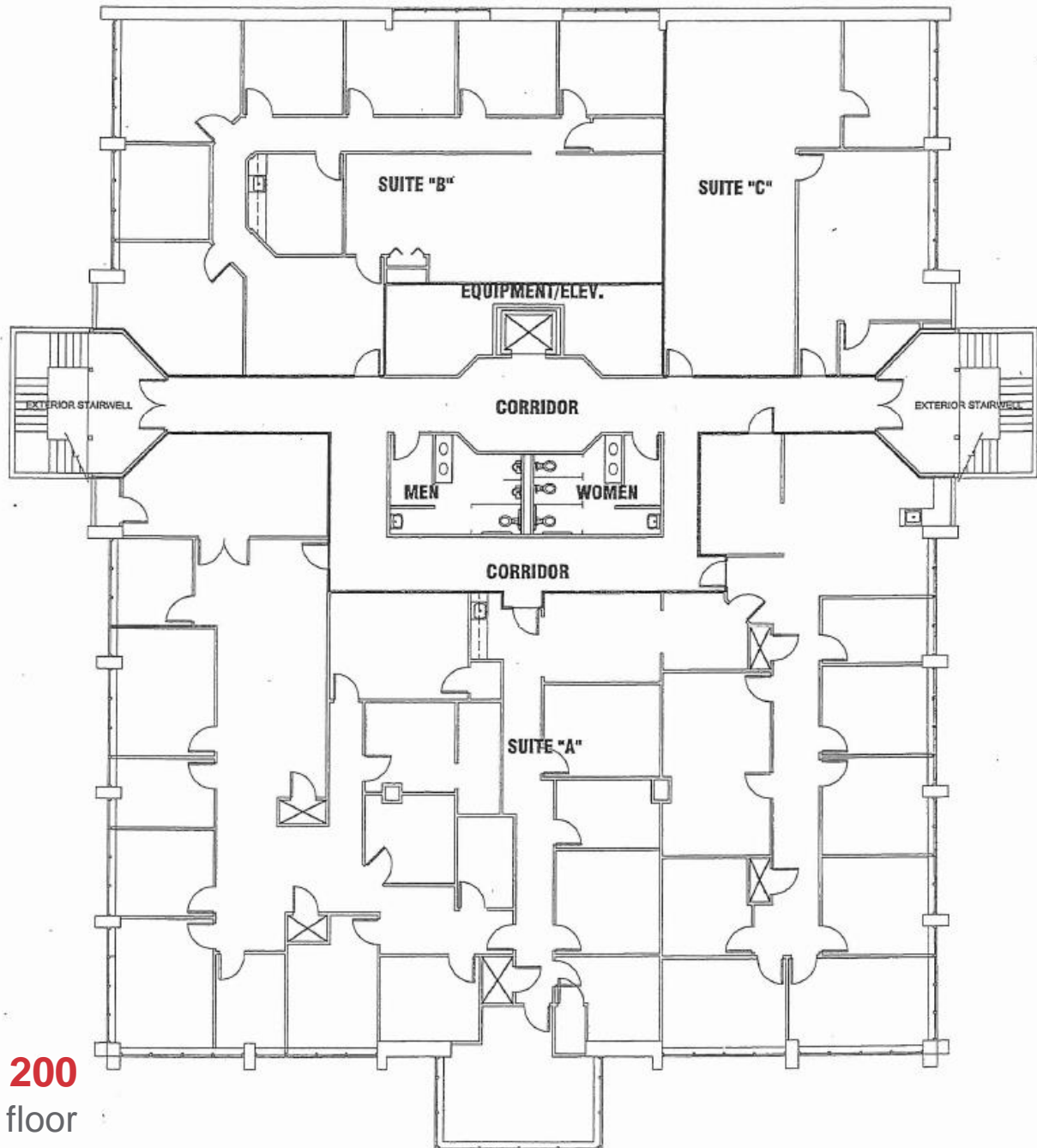
**Ty Gose, CCIM**

Ty@latterblum.com  
225.295.0800

**Erin Caballero**

Erinc@latterblum.com  
225.241.6530

## Suite 200 – 2<sup>nd</sup> floor



### Suite 200

- 2<sup>nd</sup> floor
- Approx. 12,000 SF
- \$16.00 PSF
- **Full Service Lease**

**Ty Gose, CCIM**

Ty@latterblum.com  
225.295.0800

**Erin Caballero**

Erinc@latterblum.com  
225.241.6530



**Please contact the agents for more details**

**Ty Gose, CCIM**

Ty@latterblum.com  
225.295.0800

**Erin Caballero**

Erinc@latterblum.com  
225.241.6530