

RESTAURANT/RETAIL SPACE FOR LEASE

3,856 SF + Patio | Located in Hill Center Sylvan Heights



OPPORTUNITY

This 3,856 SF restaurant/retail space with patio is available along Charlotte Avenue at Hill Center Sylvan Heights, offering dedicated retail parking, dual access from Charlotte Ave and Sylvan Heights Way, and convenient connectivity less than a mile from I-40. Positioned in a high-traffic corridor with 26,936 CPD along Charlotte Ave and neighboring businesses including Joyland, Painting with a Twist, HYLO Fitness, and Dave's Cosmic Subs, the space is well-suited for a variety of retail, restaurant, service, or hospitality users seeking strong visibility and accessibility.

PROPERTY SUMMARY

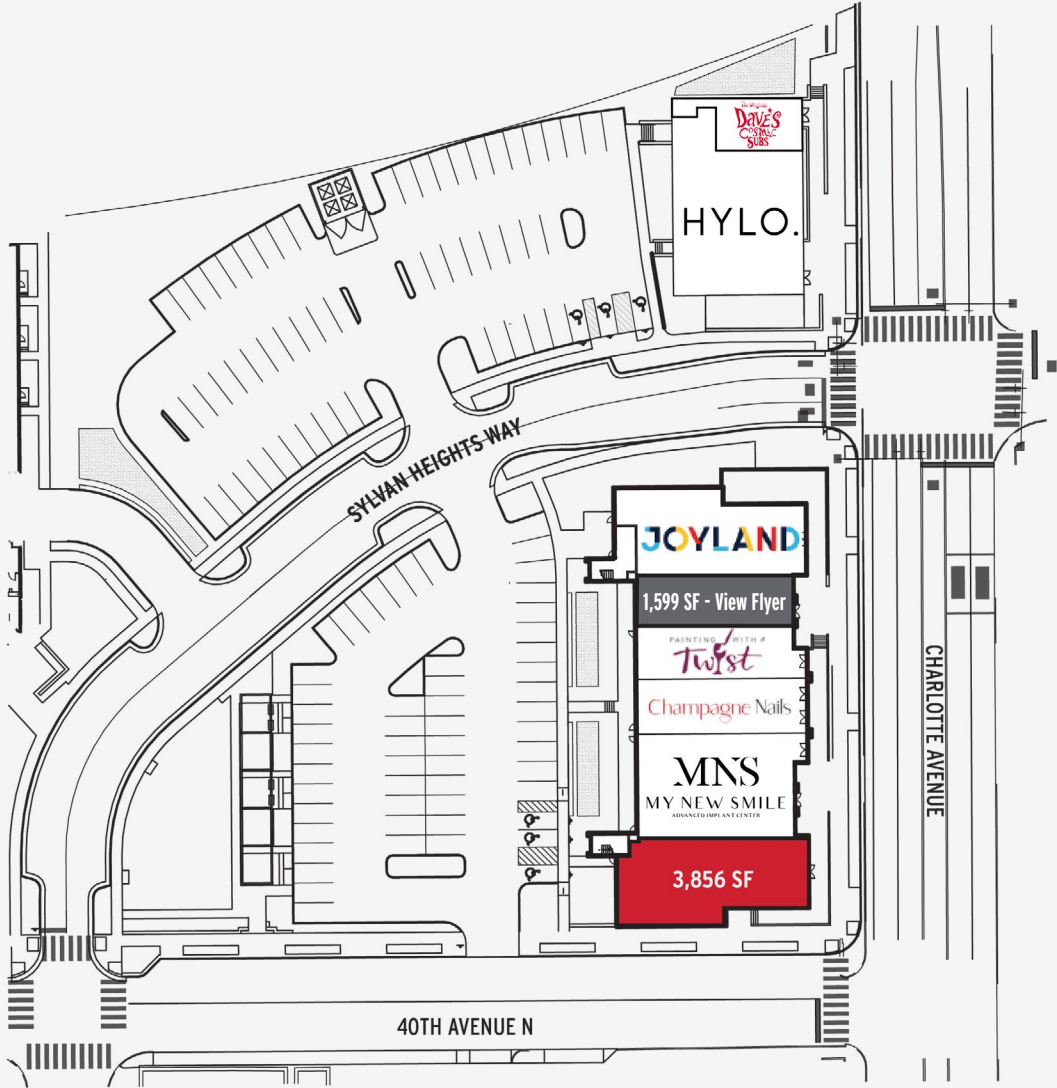
ADDRESS	345 40th Ave. North, 37209 + 4001 Charlotte Ave
BUILDING SIZE	3,856 SF
AVAILABLE	Immediately
RATE	Contact Broker



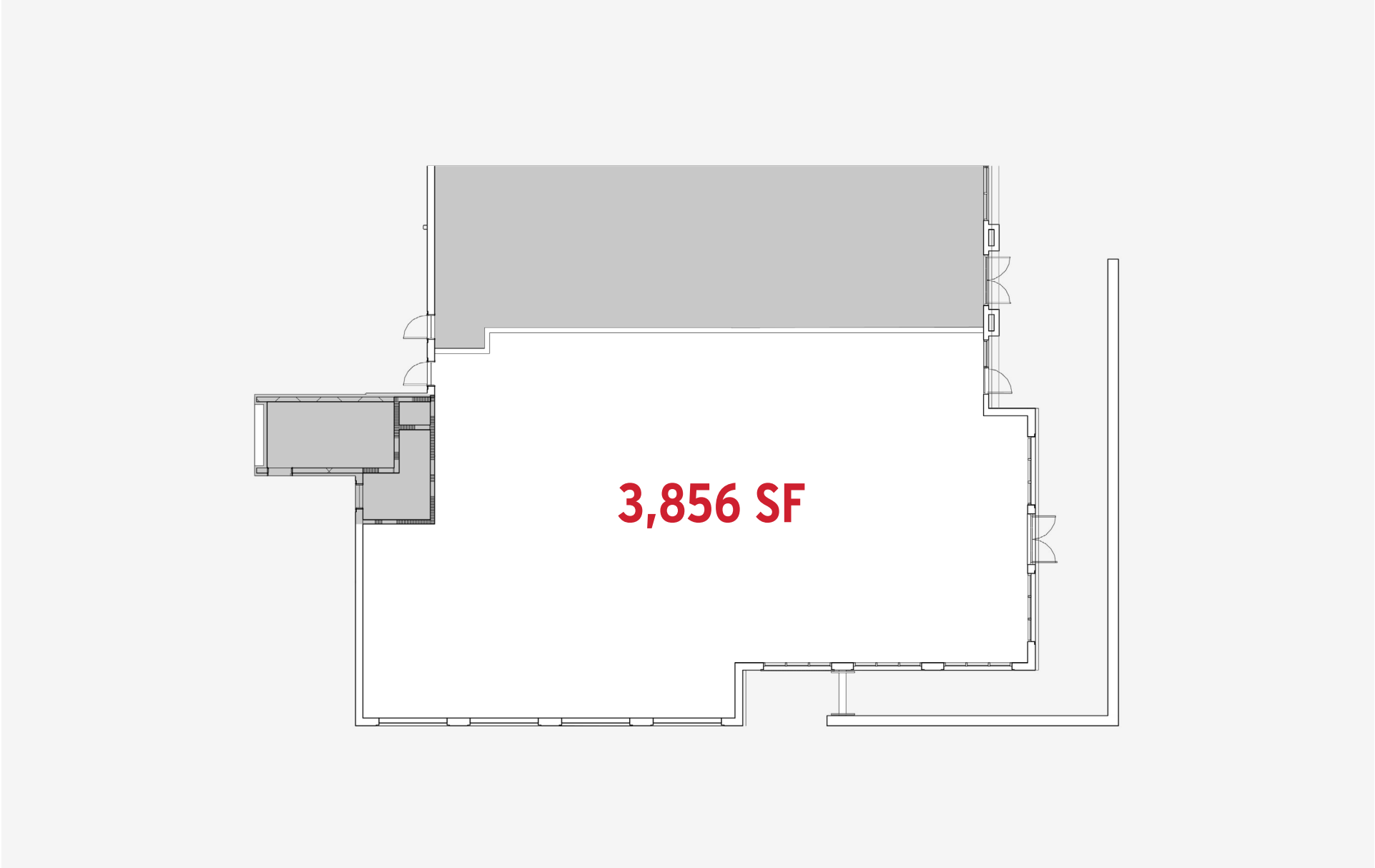
INTERIOR PHOTOS



SITE PLAN



FLOOR PLAN





Station 40
APARTMENTS

COMMON **G**ROUND

COMMON **G**ROUND

**FOR MORE
INFORMATION,
CONTACT**

TREANOR GRANBERY
615.347.1310

tgranbery@southeastventure.com

GREG COLEMAN
615.498.7554

gcoleman@southeastventure.com