

STANDARD OIL BUILDING

*Entire 125,000 SF Office
Building Available for
Lease in Downtown LA*

605 W OLYMPIC BLVD
LOS ANGELES, CA 90017

*\$2.00/SF Broker Bonus
and 100% Payment*

KIDDER.COM



 Douglas Elliman

 Kidder
Mathews

STANDARD OIL BUILDING

STANDARD OIL
BUILDING

Established 1926

RA
WELLNESS
+
BEAUTY CO-OP
MEDICAL AESTHETICS
Danny's
L.A. SUN

THE REDEFINED OFFICE EXPERIENCE

Step into the timeless Art Deco elegance of the iconic Standard Oil Building in the heart of DTLA—where historic character meets modern functionality.

Here, creativity thrives in an inspiring workspace designed for innovators, entrepreneurs, and forward-thinking teams. With its unbeatable combination of affordability, prime central location, and architectural charm, the Standard Oil Building offers a truly unique office experience that captures the energy and culture of DTLA while providing a professional environment built for collaboration and growth.

BUILDING SIZE	125,494 SF
AVAILABLE	36,000 RSF-125,494 RSF
LEASE RATE	\$2.50/SF/month, Full Service Gross
STORIES	9
BUILT/RENOV.	1926/1998
CONDITION	Some move-in ready creative office floors
PARKING	On-site and neighboring public
IDENTITY	Building top signage and naming rights available

1926/1998

YEAR BUILT/RENOVATED

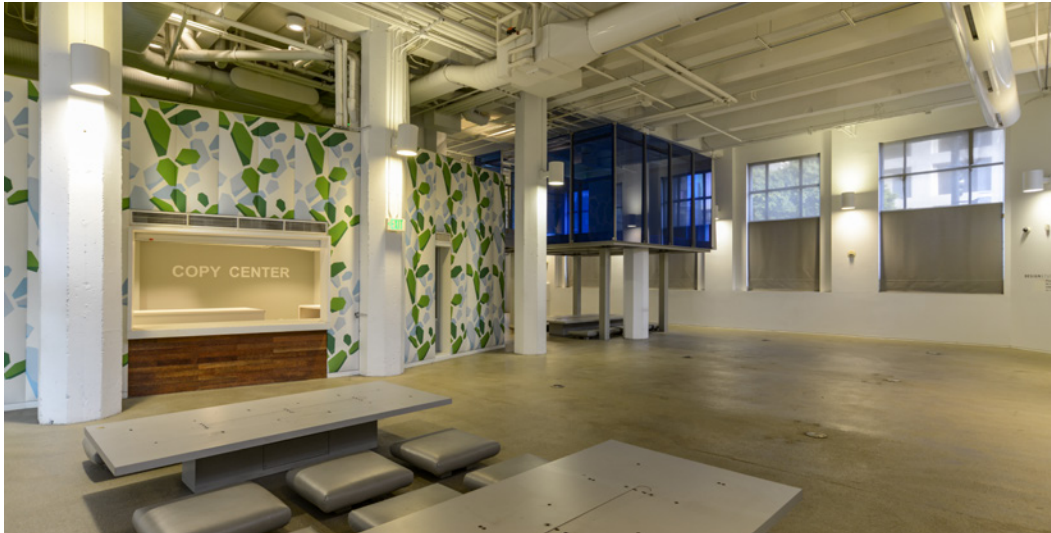
\$2.50 FSG

LEASE RATE (SF/MO)

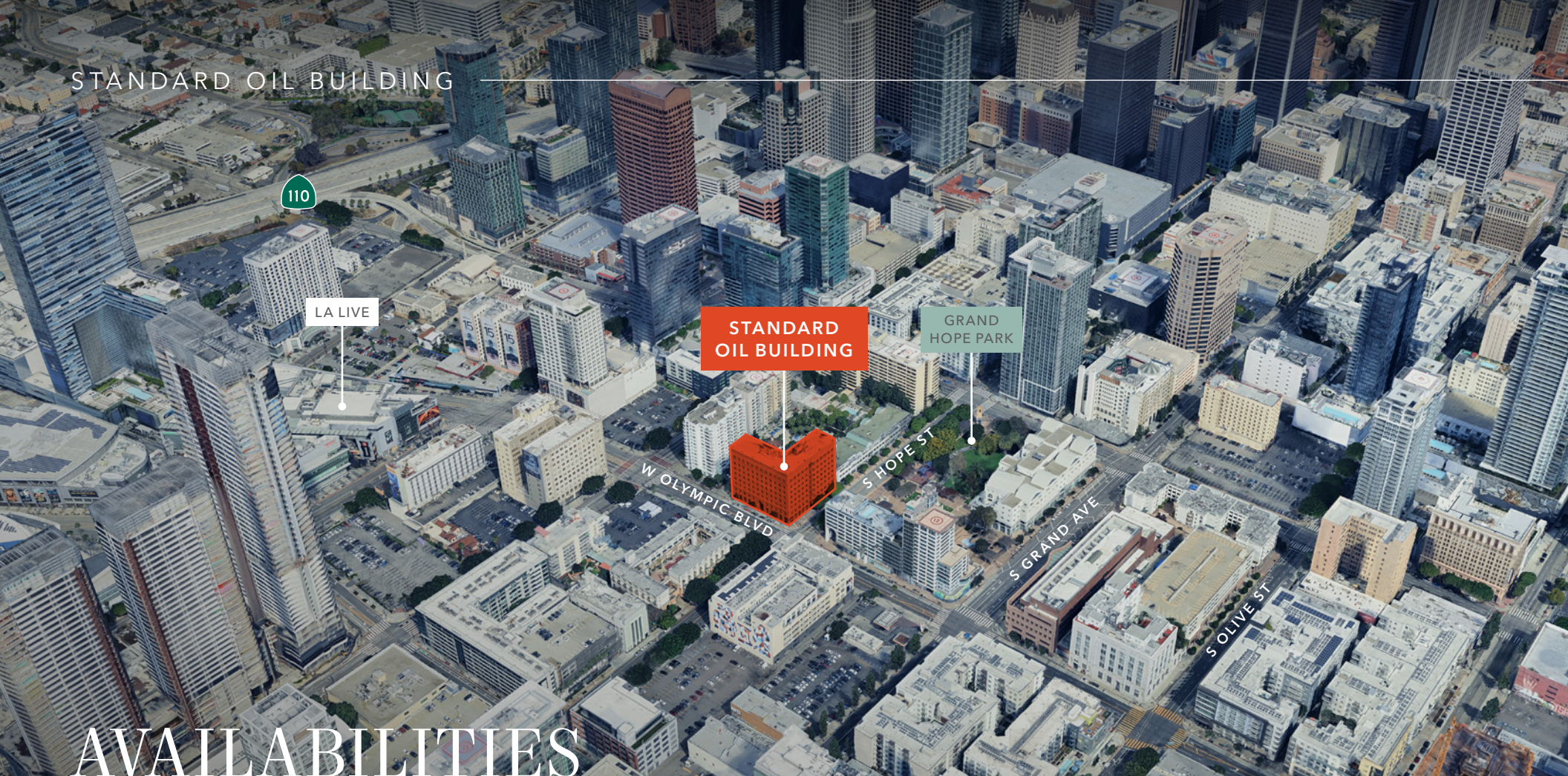
STANDARD OIL BUILDING



BUILT-OUT CREATIVE SPACE 1ST-3RD FLOORS



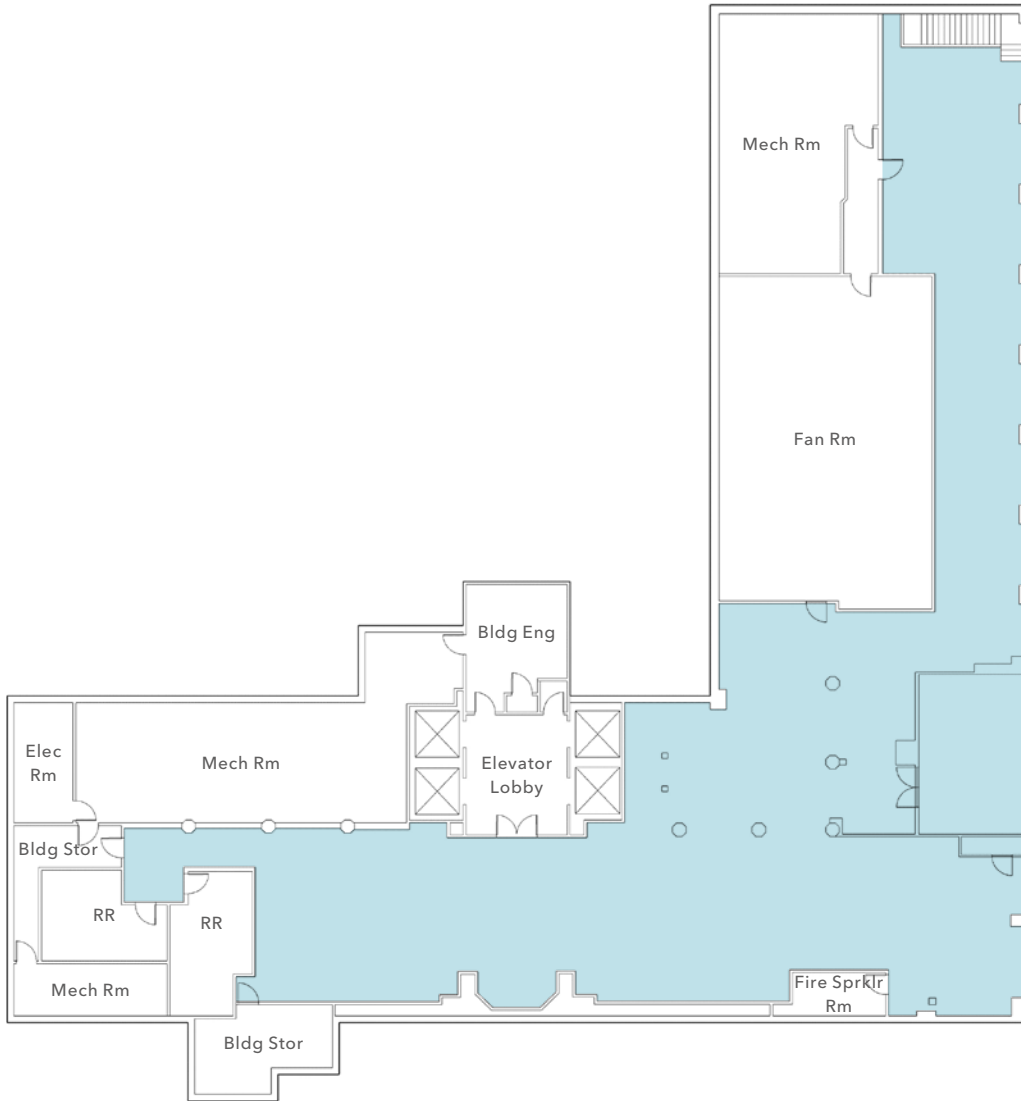
STANDARD OIL BUILDING



AVAILABILITIES

Floor	Lease Rate (SF/Mo)	RSF	Floor	Lease Rate (SF/Mo)	RSF
BASEMENT	\$2.50 FSG	8,165	5TH FLOOR	\$2.50 FSG	12,998
1ST FLOOR	\$2.50 FSG	11,676	6TH FLOOR	\$2.50 FSG	12,998
2ND FLOOR	\$2.50 FSG	12,865	7TH FLOOR	\$2.50 FSG	12,998
3RD FLOOR	\$2.50 FSG	12,998	8TH FLOOR	\$2.50 FSG	12,998
4TH FLOOR	\$2.50 FSG	12,998	9TH FLOOR PENTHOUSE	\$2.50 FSG	9,000

BASEMENT PLAN



8,165 SF

AVAILABLE

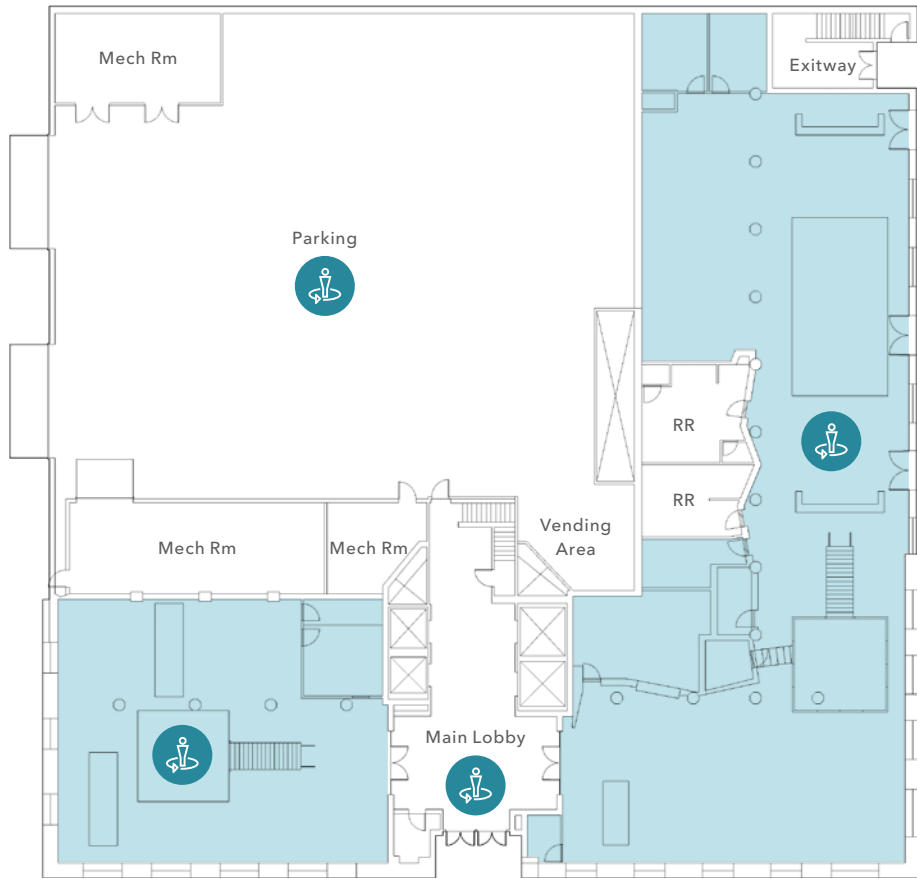
\$2.50 FSG

LEASE RATE (SF/MO)

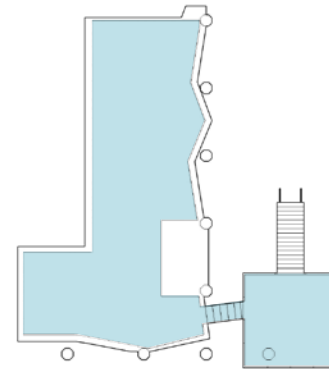
NOW

AVAILABLE

FIRST FLOOR PLAN



MEZZANINE



11,676 SF

AVAILABLE

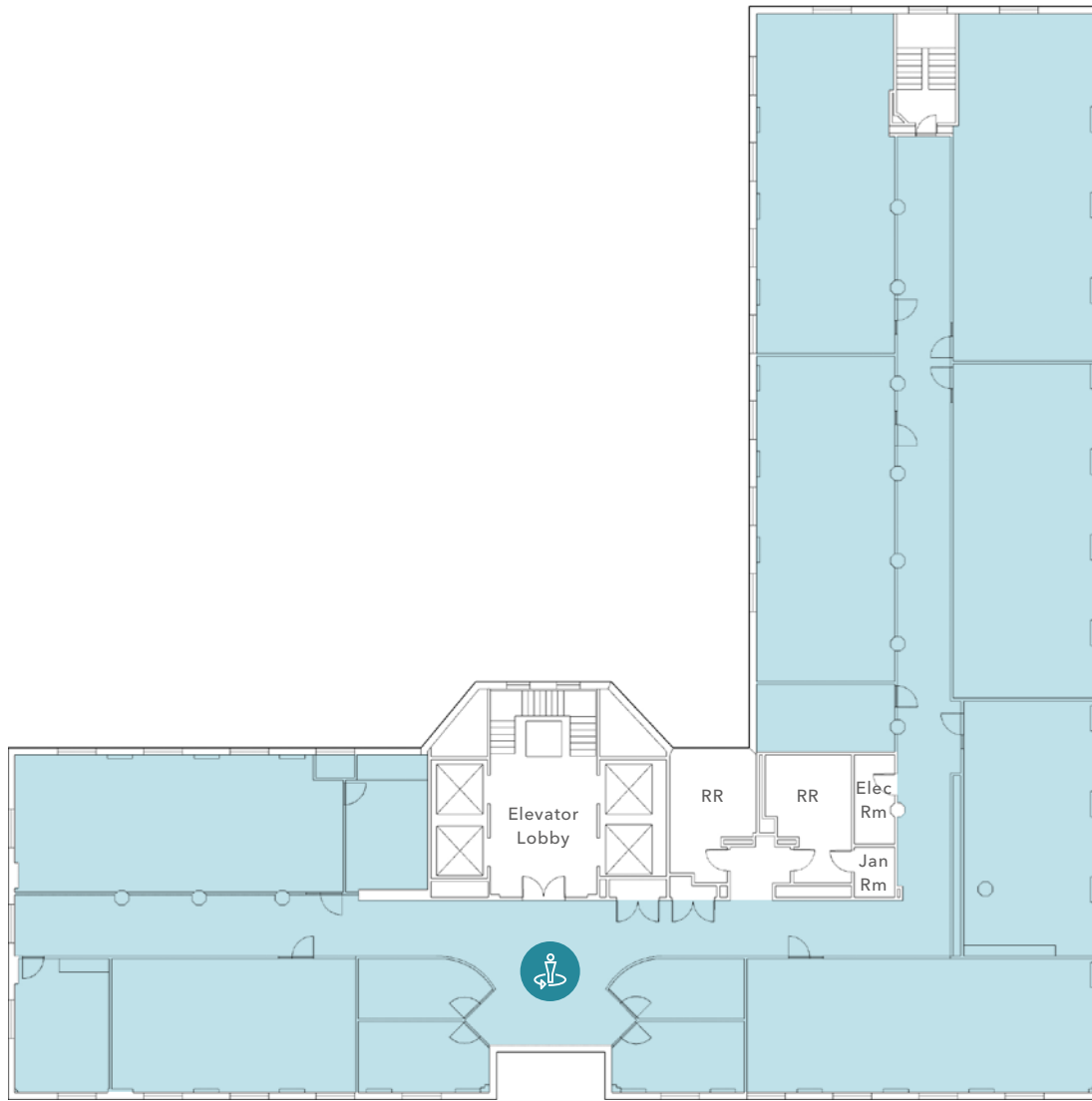
\$2.50 FSG

LEASE RATE (SF/MO)

NOW

AVAILABLE

SECOND FLOOR PLAN



12,865 SF

AVAILABLE

\$2.50 FSG

LEASE RATE (SF/MO)

NOW

AVAILABLE

THIRD FLOOR PLAN



12,998 SF

AVAILABLE

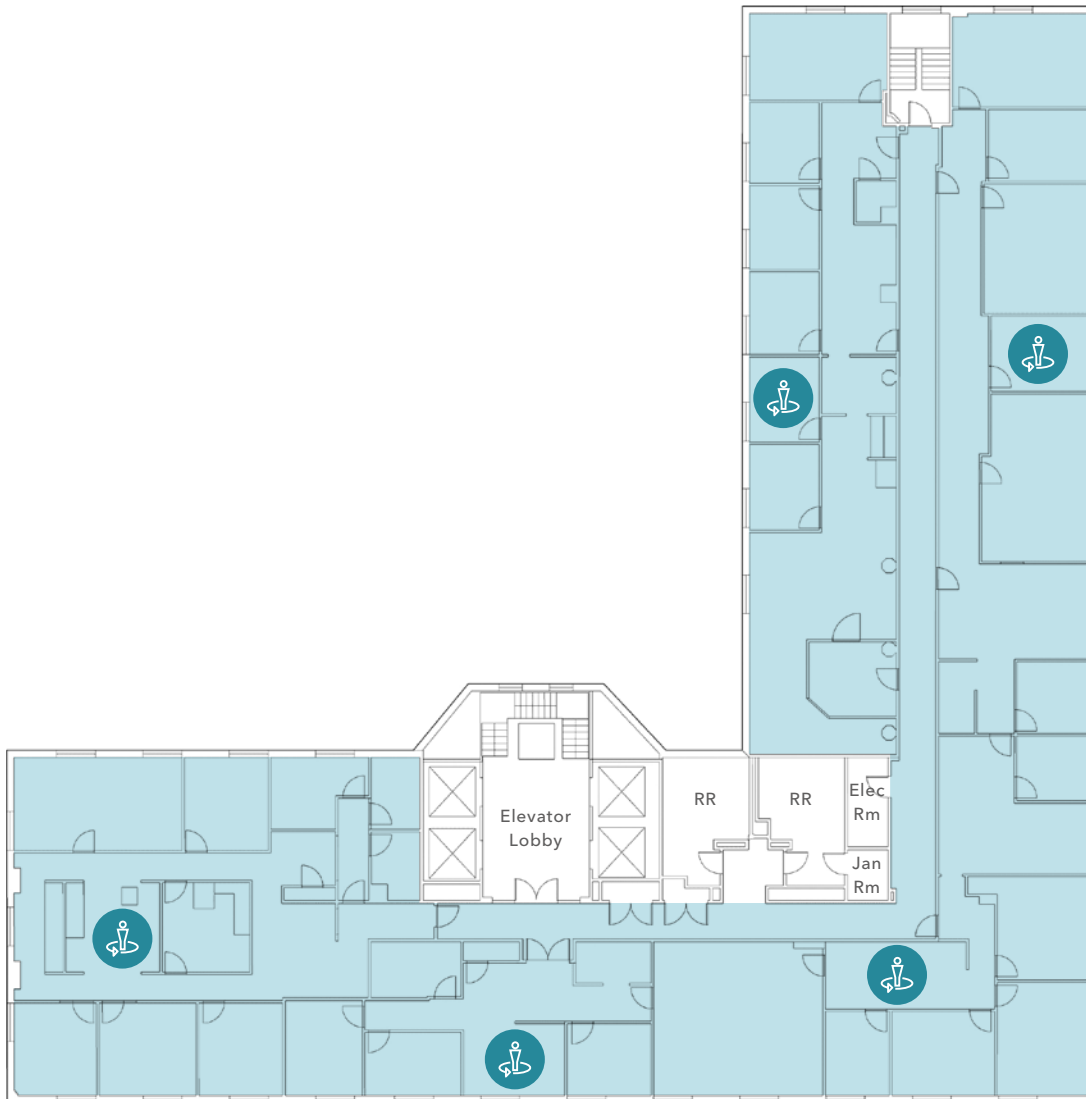
\$2.50 FSG

LEASE RATE (SF/MO)

NOW

AVAILABLE

FOURTH FLOOR PLAN



12,998 SF

AVAILABLE

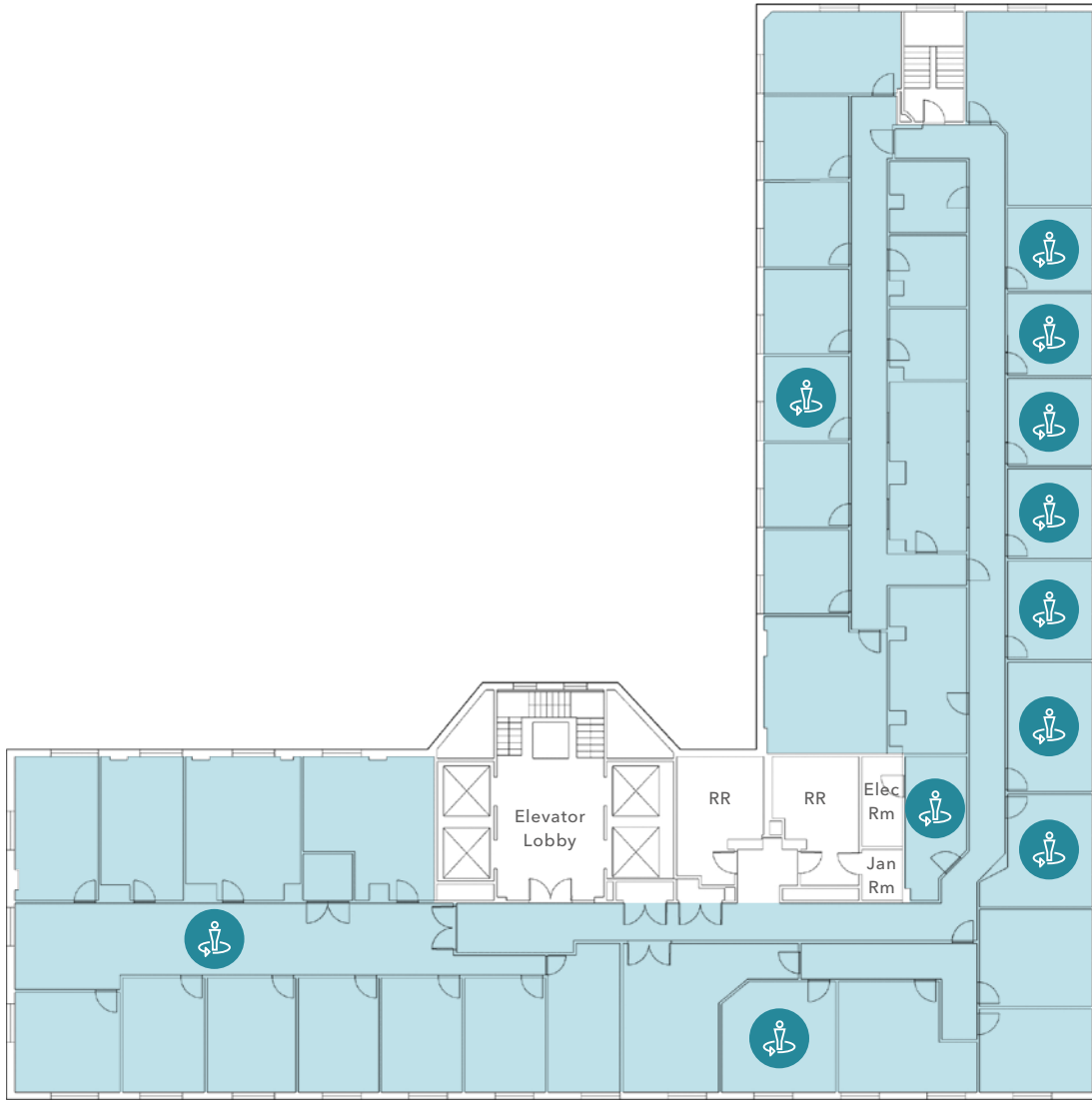
\$2.50 FSG

LEASE RATE (SF/MO)

NOW

AVAILABLE

FIFTH FLOOR PLAN



12,998 SF

AVAILABLE

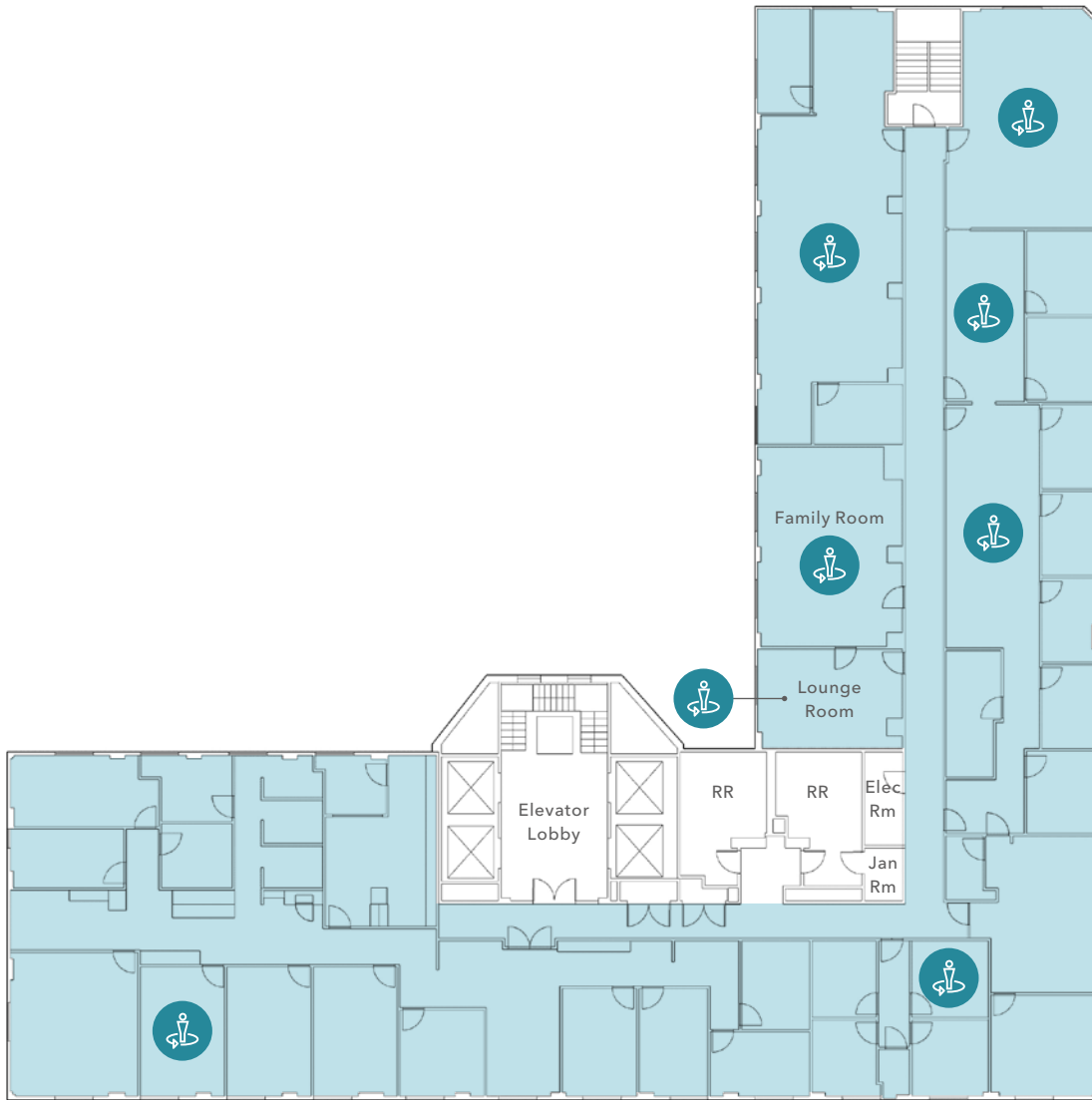
\$2.50 FSG

LEASE RATE (SF/MO)

NOW

AVAILABLE

SIXTH FLOOR PLAN



12,998 SF

AVAILABLE

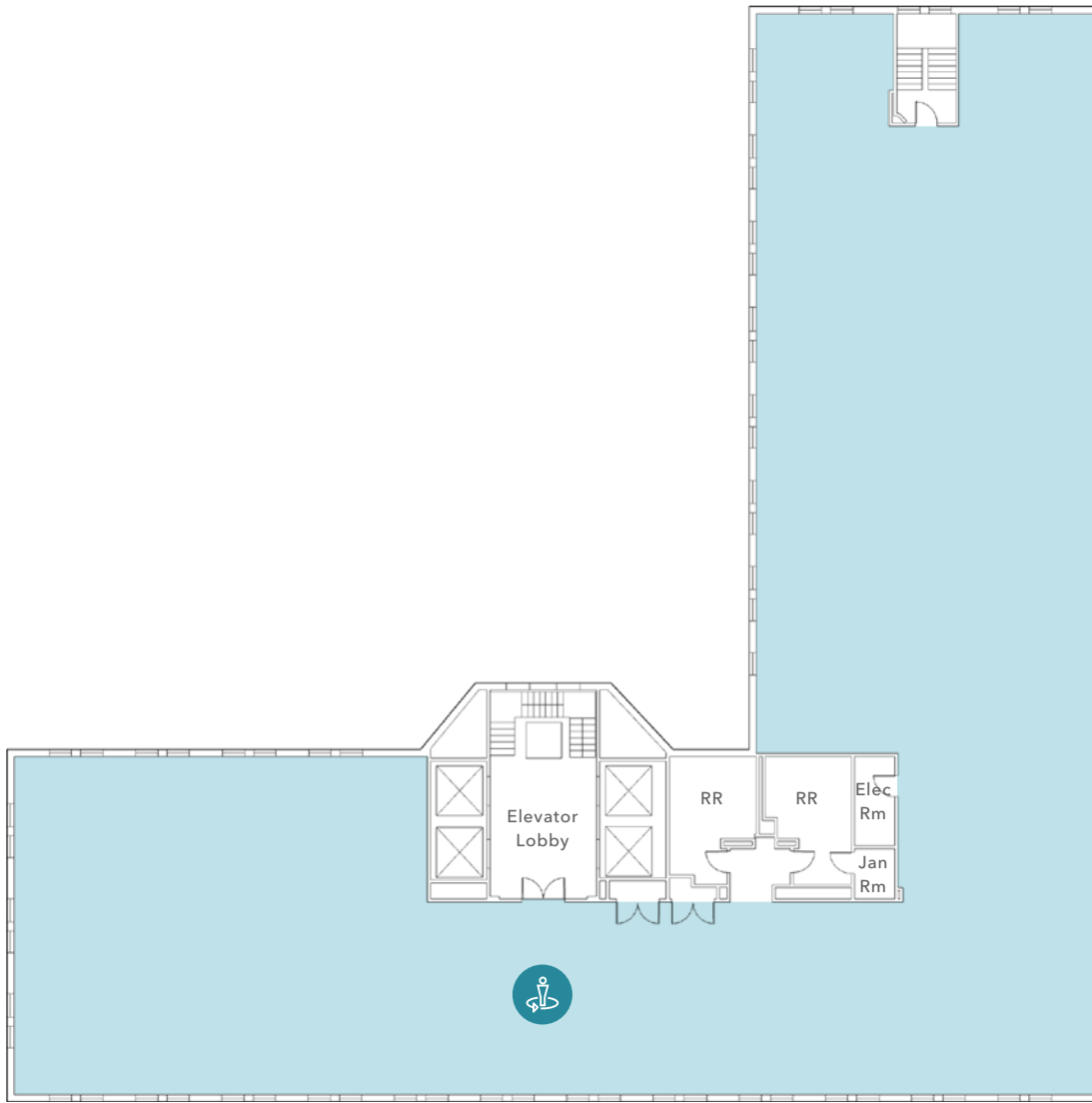
\$2.50 FSG

LEASE RATE (SF/MO)

NOW

AVAILABLE

SEVENTH FLOOR PLAN



12,998 SF

AVAILABLE

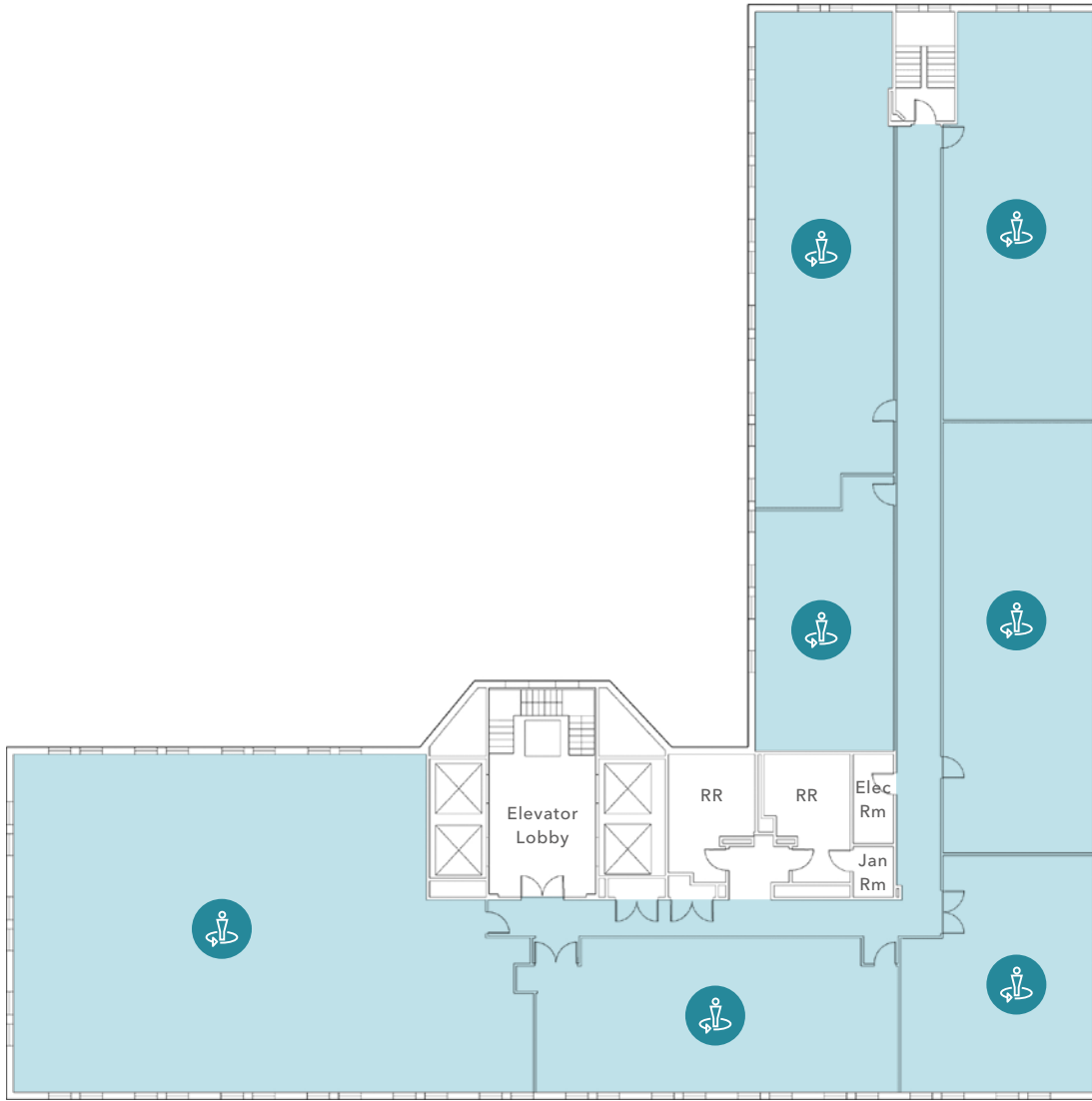
\$2.50 FSG

LEASE RATE (SF/MO)

NOW

AVAILABLE

EIGHTH FLOOR PLAN



12,998 SF

AVAILABLE

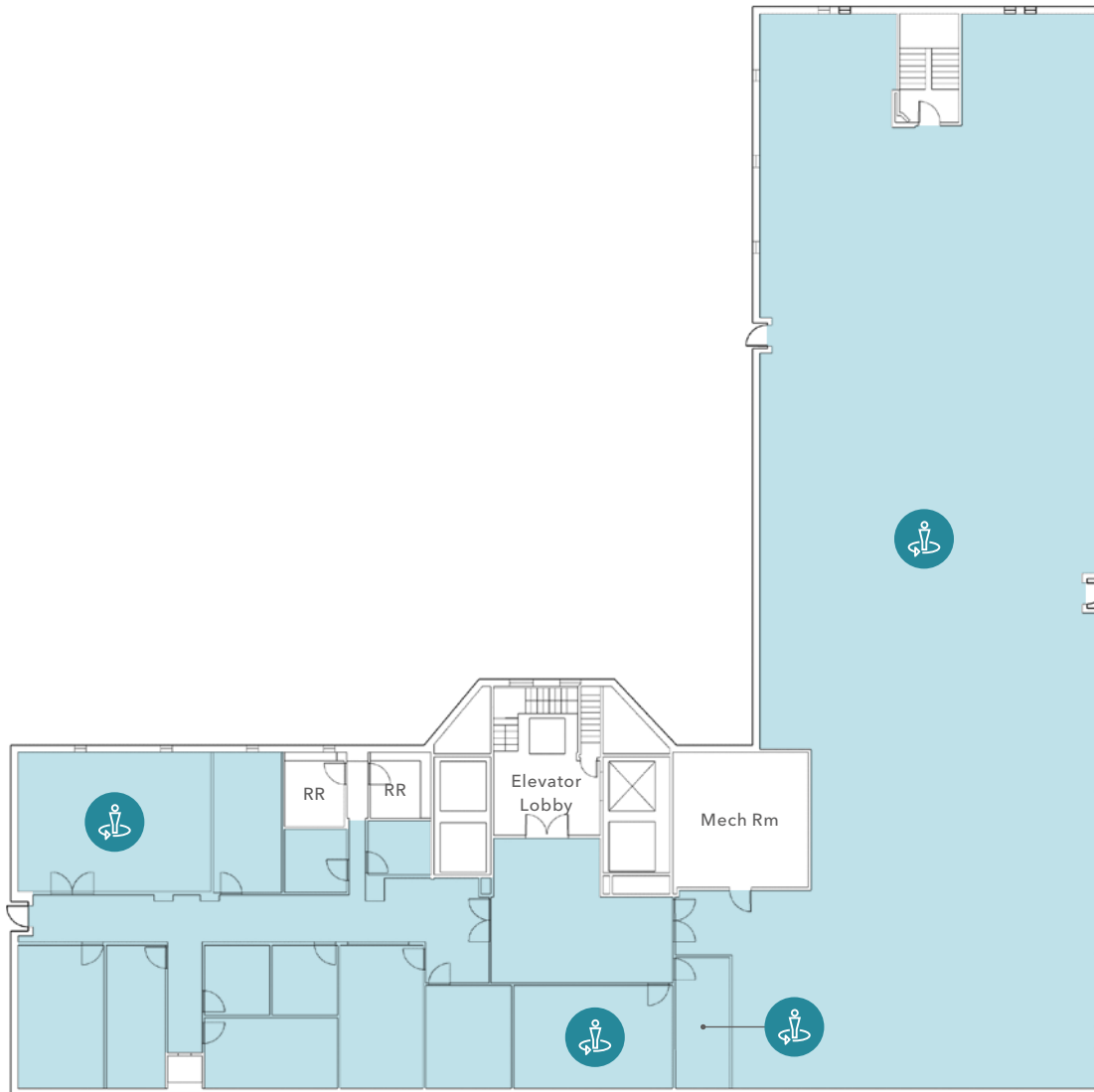
\$2.50 FSG

LEASE RATE (SF/MO)

NOW

AVAILABLE

NINTH FLOOR PLAN



9,000 SF

AVAILABLE

\$2.50 FSG

LEASE RATE (SF/MO)

NOW

AVAILABLE

PREMIER DOWNTOWN LOCATION

Excellent proximity to numerous retail, local and nationally known restaurants, services, hotels, and residential projects

Ideal corner location in close proximity to LA Live, Crypto.com Arena and the vibrant South Park community of Downtown LA

On-site and surrounding public parking available

Ideal single-tenant corporate headquarters building that can be demised for a smaller use as well

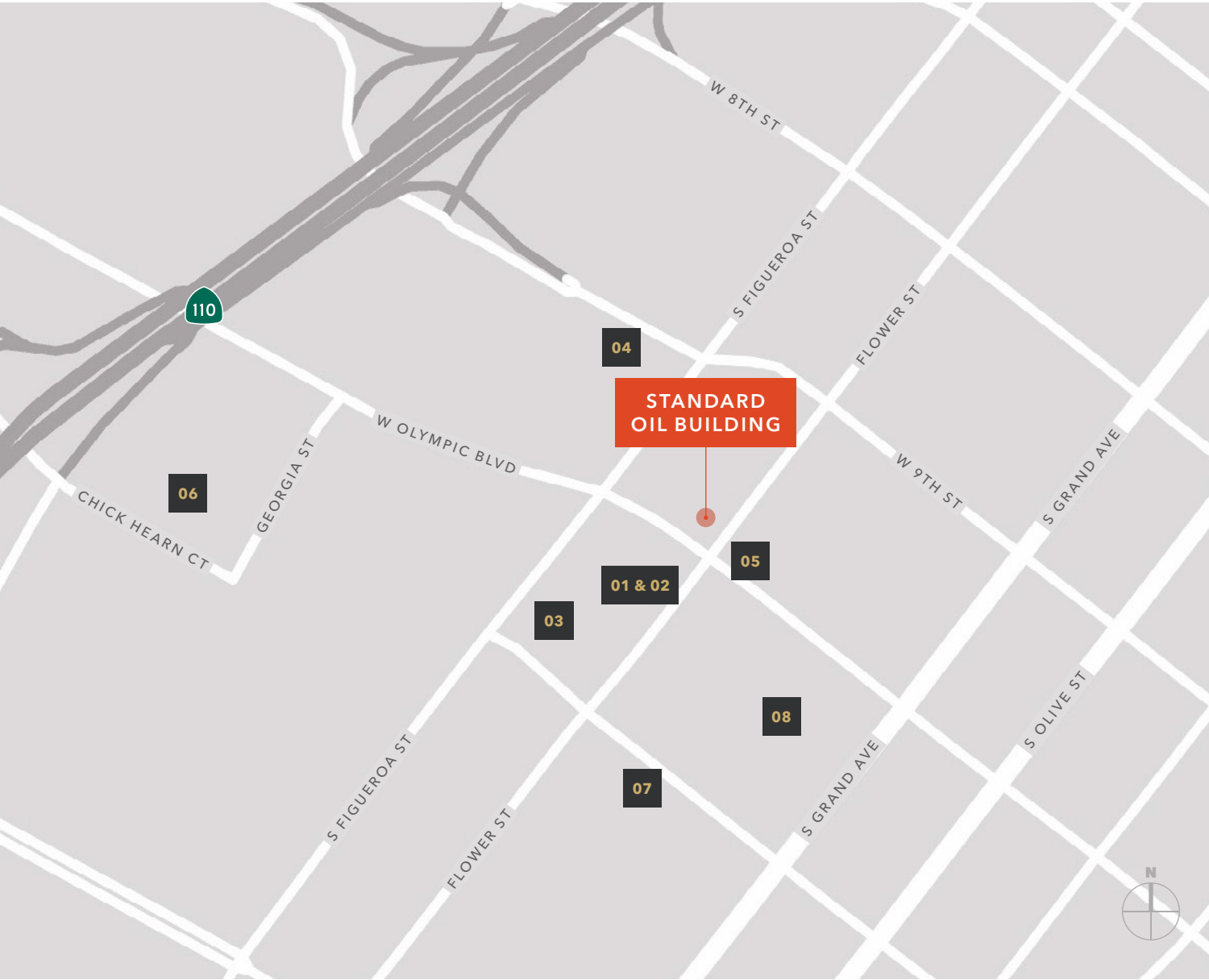
4 MIN

CA-110 VIA S HOPE ST & W 8TH ST

6 MIN

US 101 VIA W OLYMPIC BLVD & CA-110 N





PUBLIC PARKING STRUCTURES

	Address	Monthly Rate*
01	1025 S Flower St	\$154
02	1015 S Flower St	\$209
03	1046 S Figueroa St	\$175
04	913 S Figueroa St	\$190
05	950 S Flower St	\$175
06	1005 Chick Hearn Ct	\$200
07	1111 S Hope St	\$200
08	1028 S Hope St	\$135

*Estimated as of 5/2026



Exclusively leased by

JOHN ANTHONY, SIOR
Kidder Mathews
213.225.7218
john.anthony@kidder.com
LIC N° 01226464

CHRISTOPHER STECK, CCIM
Kidder Mathews
213.225.7231
christopher.steck@kidder.com
LIC N° 01871338

ELIZABETH CLARK
Kidder Mathews
424.653.1820
elizabeth.clark@kidder.com
LIC N° 01811246

ALEXANDER HALIMI
Douglas Elliman
424.653.1820
alexander.halimi@elliman.com
LIC N° 01892171

KIDDER.COM