

# East Lake Plaza

940 Frontenac Dr, Winona, MN 55981



## PROPERTY SUMMARY

- Prime Retail Location
- High Visibility
- Strong Co-Tenancy
- Front Door Parking
- Modern Building
- Great Accessibility
- National Retail Corridor
- Turn-Key Spaces

# East Lake Plaza Retail Center

940 Frontenac Dr, Winona, MN 55981

## Available Suites

| Suite     | Total Size | Lease Rate          | CAM/ReTax  |
|-----------|------------|---------------------|------------|
| Suite 100 | 3,500 sqft | \$30/SF/Year<br>NNN | \$9.50 PSF |
| Suite 140 | 1,450 sqft | \$25/SF/Year<br>NNN | \$9.50 PSF |

**Matt Gove**  
507.289.8000  
matt@rgi-group



**Dylan Carty**  
507.289.8000  
dylan@rgi-group

# 100

SUITE

THE  
PREMIER  
END-CAP



# Suite 100 - The Premier End-Cap



## Property Features

- High-Visibility End-Cap
- Prime Retail Corridor
- Strong National Co-Tenancy
- Superior Accessibility
- Turnkey Modern Layouts
- Exceptional Market Position

This versatile suite offers a clean, modern professional environment featuring a mix of private offices and expansive open work areas. The space is flooded with natural light and includes a dedicated reception area, a functional kitchenette, and updated finishes throughout. With its prime location and flexible layout, it's perfectly suited for a growing business looking for high visibility and move-in-ready convenience.

**Total Size**

3,500 SF

**Lease Rate**

\$30 SF

**CAM / RETAX**

\$9.50

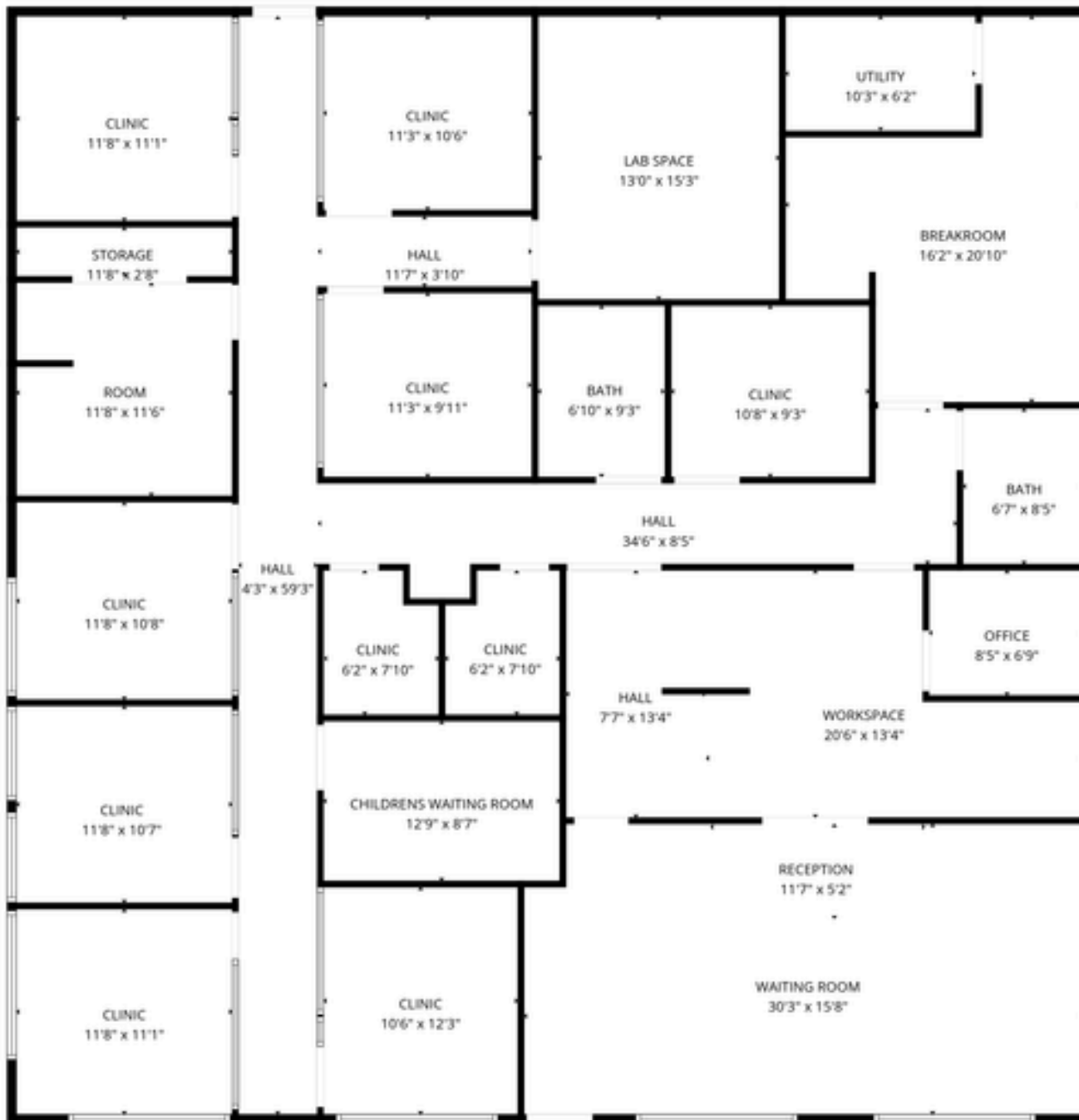


REALTY  
GROWTH  
INCORPORATED



**East Lake Plaza  
Suite 100**

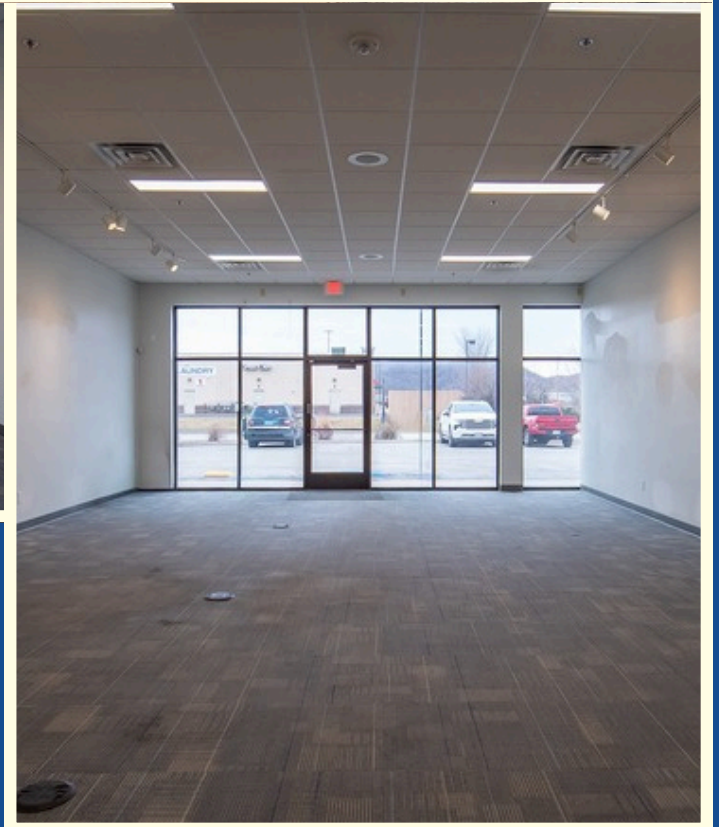
**3,500 SF**



# SUITE 140

SUITE

THE  
FLEXIBLE  
INLINE



# Suite 140 - The Flexible Inline



## Property Features

- High-Traffic Retail Hub
- Efficient 1,450 SF Layout
- National Neighbor Synergy
- Front-Door Convenience
- Modern Storefront Branding
- Turnkey Condition

**Total Size**  
1,450 SF

**Lease Rate**  
\$25 SF

**CAM / RETAX**  
\$9.50



Secure 1,450 SF of prime retail space in Winona's premier commercial corridor. Located near Target and Walmart, this modern suite offers a clean, functional layout with high visibility and consistent daily traffic. Features include front-door parking, easy accessibility, and a turnkey setup ready for your business. Join national co-tenants like Jimmy John's and Little Caesars in this high-momentum location.



**East Lake Plaza  
Suite 140**

**1,450 SF**



# East Lake Plaza Retail Center



**Dylan Carty**  
**507.289.8000**  
**dylan@rgi-group**



**Matt Gove**  
**507.289.8000**  
**matt@rgi-group**