

PRIME RETAIL/OFFICE FOR LEASE



MILESTONE PLAZA

2500 & 2502 Southwest 14th Street, Bentonville, AR 72712



PROPERTY DESCRIPTION

Prime commercial office/retail space available for lease just off SW 14th St in Bentonville, offering an excellent location for businesses looking to establish a presence in a high-traffic area. Spread across two buildings, these suites are currently in shell condition, providing a blank slate for customization to meet the needs of the future tenant. The property sits on the "going home" side of 14th St, which see approx. 35,000 VPD, ensuring maximum visibility and accessibility. Additionally, it is conveniently located less than a mile from the Centerton Walmart Neighborhood Market, making it an ideal spot for retail, office, or service-oriented businesses.

PROPERTY HIGHLIGHTS

- High-Visibility Location
- Ample Parking for Tenants and Guests
- Flexible and Customizable Floor Plans
- Situated on SW 14th St (35,000 VPD)

OFFERING SUMMARY

Lease Rate:	\$17.50 - 23 SF/yr (NNN)
Available SF:	1,250 - 3,050 SF
Building Size:	25,000 SF

DEMOGRAPHICS	1 MILE	3 MILES	5 MILES
Total Households	3,835	21,177	34,560
Total Population	10,107	57,727	93,868
Average HH Income	\$123,407	\$132,560	\$134,353

We obtained the information above from sources we believe to be reliable. However, we have not verified its accuracy and make no guarantee, warranty or representation about it. It is submitted subject to the possibility of errors, omissions, change of price, rental or other conditions, prior sale, lease or financing, or withdrawal without notice. We include projections, opinions, assumptions or estimates for example only, and they may not represent current or future performance of the property. You and your tax and legal advisors should conduct your own investigation of the property and transaction.

SALMONSEN GROUP

Executive Broker
O: 479.231.1355
C: 479.330.1250
sgrleadmanager@gmail.com
AR #EB00066512

KW COMMERCIAL
201 SW 14th St.
Suite 203
Bentonville, AR 72712

Each Office Independently Owned and Operated salmonsengroup.com

PRIME RETAIL/OFFICE FOR LEASE

MILESTONE PLAZA

2500 & 2502 Southwest 14th Street, Bentonville, AR 72712



LEASE INFORMATION

Lease Type:	NNN	Lease Term:	Negotiable
Total Space:	1,250 - 3,050 SF	Lease Rate:	\$17.50 - \$23 SF/yr

AVAILABLE SPACES

SUITE	TENANT	SIZE (SF)	LEASE TYPE	LEASE RATE	DESCRIPTION
2500 SW 14th St Suite 14	Available	1,365 SF	NNN	\$23.00 SF/yr	-
2502 SW 14th Suite 8	Available	1,750 SF	NNN	\$19.25 SF/yr	-
2502 SW 14th Suite 10	Available	1,300 SF	NNN	\$19.25 SF/yr	-
2502 SW 14th Suite 8 & 10	Available	3,050 SF	NNN	\$19.25 SF/yr	-
2502 SW 14th Suite 16 & 18	Available	2,500 SF	NNN	\$17.50 SF/yr	-
2502 SW 14th Suite 20	Available	1,250 SF	NNN	\$19.50 SF/yr	-

We obtained the information above from sources we believe to be reliable. However, we have not verified its accuracy and make no guarantee, warranty or representation about it. It is submitted subject to the possibility of errors, omissions, change of price, rental or other conditions, prior sale, lease or financing, or withdrawal without notice. We include projections, opinions, assumptions or estimates for example only, and they may not represent current or future performance of the property. You and your tax and legal advisors should conduct your own investigation of the property and transaction.

SALMONSEN GROUP
 Executive Broker
 O: 479.231.1355
 C: 479.330.1250
 sgrleadmanager@gmail.com
 AR #EB00066512

KW COMMERCIAL
 201 SW 14th St.
 Suite 203
 Bentonville, AR 72712

Each Office Independently Owned and Operated salmonsengroup.com

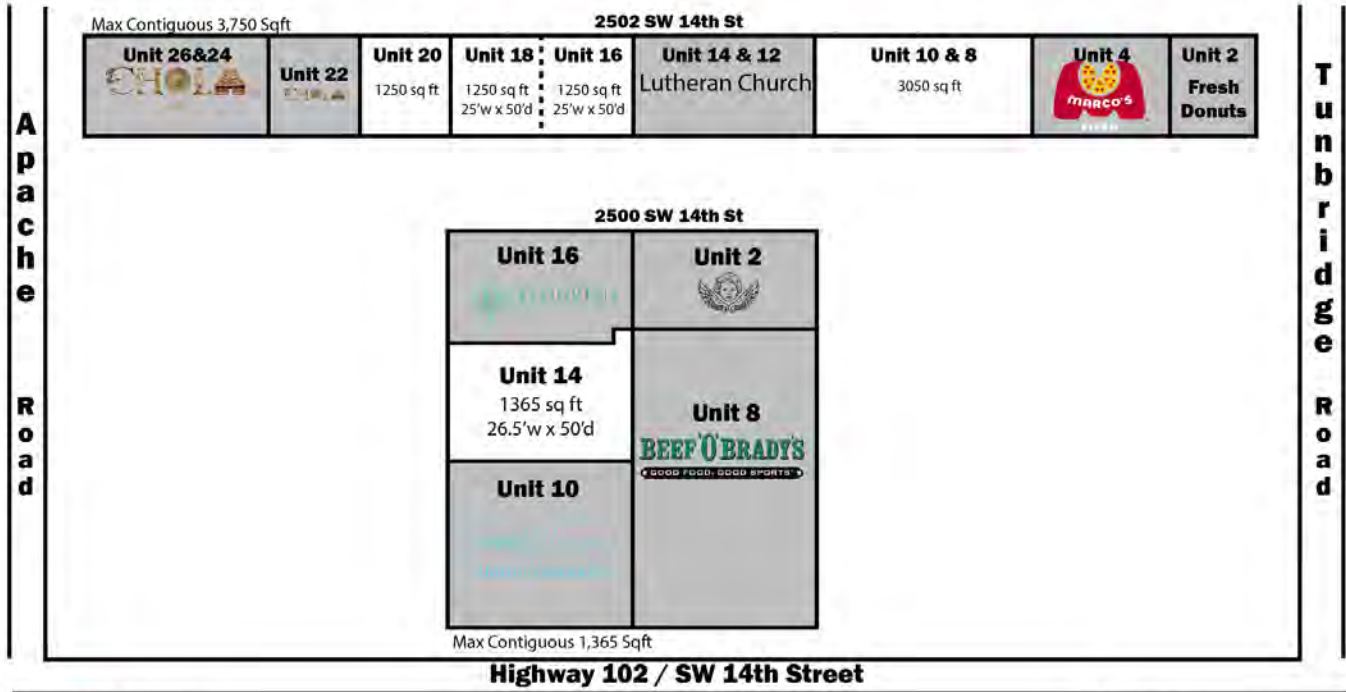
PRIME RETAIL/OFFICE FOR LEASE



MILESTONE PLAZA

2500 & 2502 Southwest 14th Street, Bentonville, AR 72712

Building Layout 2500 & 2502 SW 14th St



479-231-1355
info@salmonsengroup.com



We obtained the information above from sources we believe to be reliable. However, we have not verified its accuracy and make no guarantee, warranty or representation about it. It is submitted subject to the possibility of errors, omissions, change of price, rental or other conditions, prior sale, lease or financing, or withdrawal without notice. We include projections, opinions, assumptions or estimates for example only, and they may not represent current or future performance of the property. You and your tax and legal advisors should conduct your own investigation of the property and transaction.

SALMONSEN GROUP
 Executive Broker
 O: 479.231.1355
 C: 479.330.1250
 sgrleadmanager@gmail.com
 AR #EB00066512

KW COMMERCIAL
 201 SW 14th St.
 Suite 203
 Bentonville, AR 72712

Each Office Independently Owned and Operated salmonsengroup.com

PRIME RETAIL/OFFICE FOR LEASE



2500 SW 14TH SUITE 14

2500 & 2502 Southwest 14th Street, Bentonville, AR 72712



We obtained the information above from sources we believe to be reliable. However, we have not verified its accuracy and make no guarantee, warranty or representation about it. It is submitted subject to the possibility of errors, omissions, change of price, rental or other conditions, prior sale, lease or financing, or withdrawal without notice. We include projections, opinions, assumptions or estimates for example only, and they may not represent current or future performance of the property. You and your tax and legal advisors should conduct your own investigation of the property and transaction.

SALMONSEN GROUP
Executive Broker
O: 479.231.1355
C: 479.330.1250
sgrleadmanager@gmail.com
AR #EB00066512

KW COMMERCIAL
201 SW 14th St.
Suite 203
Bentonville, AR 72712

Each Office Independently Owned and Operated salmonsengroup.com

PRIME RETAIL/OFFICE FOR LEASE



2500 SW 14TH SUITE 14 FLOOR PLAN

2500 & 2502 Southwest 14th Street, Bentonville, AR 72712



FLOOR PLAN CREATED BY CUBICASA APP. MEASUREMENTS DEEMED HIGHLY RELIABLE BUT NOT GUARANTEED.

We obtained the information above from sources we believe to be reliable. However, we have not verified its accuracy and make no guarantee, warranty or representation about it. It is submitted subject to the possibility of errors, omissions, change of price, rental or other conditions, prior sale, lease or financing, or withdrawal without notice. We include projections, opinions, assumptions or estimates for example only, and they may not represent current or future performance of the property. You and your tax and legal advisors should conduct your own investigation of the property and transaction.

SALMONSEN GROUP
Executive Broker
O: 479.231.1355
C: 479.330.1250
sgrleadmanager@gmail.com
AR #EB00066512

KW COMMERCIAL
201 SW 14th St.
Suite 203
Bentonville, AR 72712

Each Office Independently Owned and Operated salmonsengroup.com

PRIME RETAIL/OFFICE FOR LEASE

2502 SW 14TH SUITE 8 & 10 PHOTOS

2500 & 2502 Southwest 14th Street, Bentonville, AR 72712



We obtained the information above from sources we believe to be reliable. However, we have not verified its accuracy and make no guarantee, warranty or representation about it. It is submitted subject to the possibility of errors, omissions, change of price, rental or other conditions, prior sale, lease or financing, or withdrawal without notice. We include projections, opinions, assumptions or estimates for example only, and they may not represent current or future performance of the property. You and your tax and legal advisors should conduct your own investigation of the property and transaction.

SALMONSEN GROUP
Executive Broker
O: 479.231.1355
C: 479.330.1250
sgrleadmanager@gmail.com
AR #EB00066512

KW COMMERCIAL
201 SW 14th St.
Suite 203
Bentonville, AR 72712

Each Office Independently Owned and Operated salmonsengroup.com

PRIME RETAIL/OFFICE FOR LEASE

2502 SW 14TH SUITE 8 & 10 FLOOR PLAN

2500 & 2502 Southwest 14th Street, Bentonville, AR 72712



Suite 10: +/- 1,300 SF

Suite 8: +/- 1,750 SF

FLOOR PLAN CREATED BY CURIELASA AFFILIATES/FRANCHISES DEEMED HIGHLY RELIABLE BUT NOT GUARANTEED

We obtained the information above from sources we believe to be reliable. However, we have not verified its accuracy and make no guarantee, warranty or representation about it. It is submitted subject to the possibility of errors, omissions, change of price, rental or other conditions, prior sale, lease or financing, or withdrawal without notice. We include projections, opinions, assumptions or estimates for example only, and they may not represent current or future performance of the property. You and your tax and legal advisors should conduct your own investigation of the property and transaction.

SALMONSEN GROUP
Executive Broker
O: 479.231.1355
C: 479.330.1250
sgrleadmanager@gmail.com
AR #EB00066512

KW COMMERCIAL
201 SW 14th St.
Suite 203
Bentonville, AR 72712

Each Office Independently Owned and Operated salmonsengroup.com

PRIME RETAIL/OFFICE FOR LEASE



2502 SW 14TH SUITE 16 & 18 PHOTOS

2500 & 2502 Southwest 14th Street, Bentonville, AR 72712



We obtained the information above from sources we believe to be reliable. However, we have not verified its accuracy and make no guarantee, warranty or representation about it. It is submitted subject to the possibility of errors, omissions, change of price, rental or other conditions, prior sale, lease or financing, or withdrawal without notice. We include projections, opinions, assumptions or estimates for example only, and they may not represent current or future performance of the property. You and your tax and legal advisors should conduct your own investigation of the property and transaction.

SALMONSEN GROUP
Executive Broker
O: 479.231.1355
C: 479.330.1250
sgrleadmanager@gmail.com
AR #EB00066512

KW COMMERCIAL
201 SW 14th St.
Suite 203
Bentonville, AR 72712

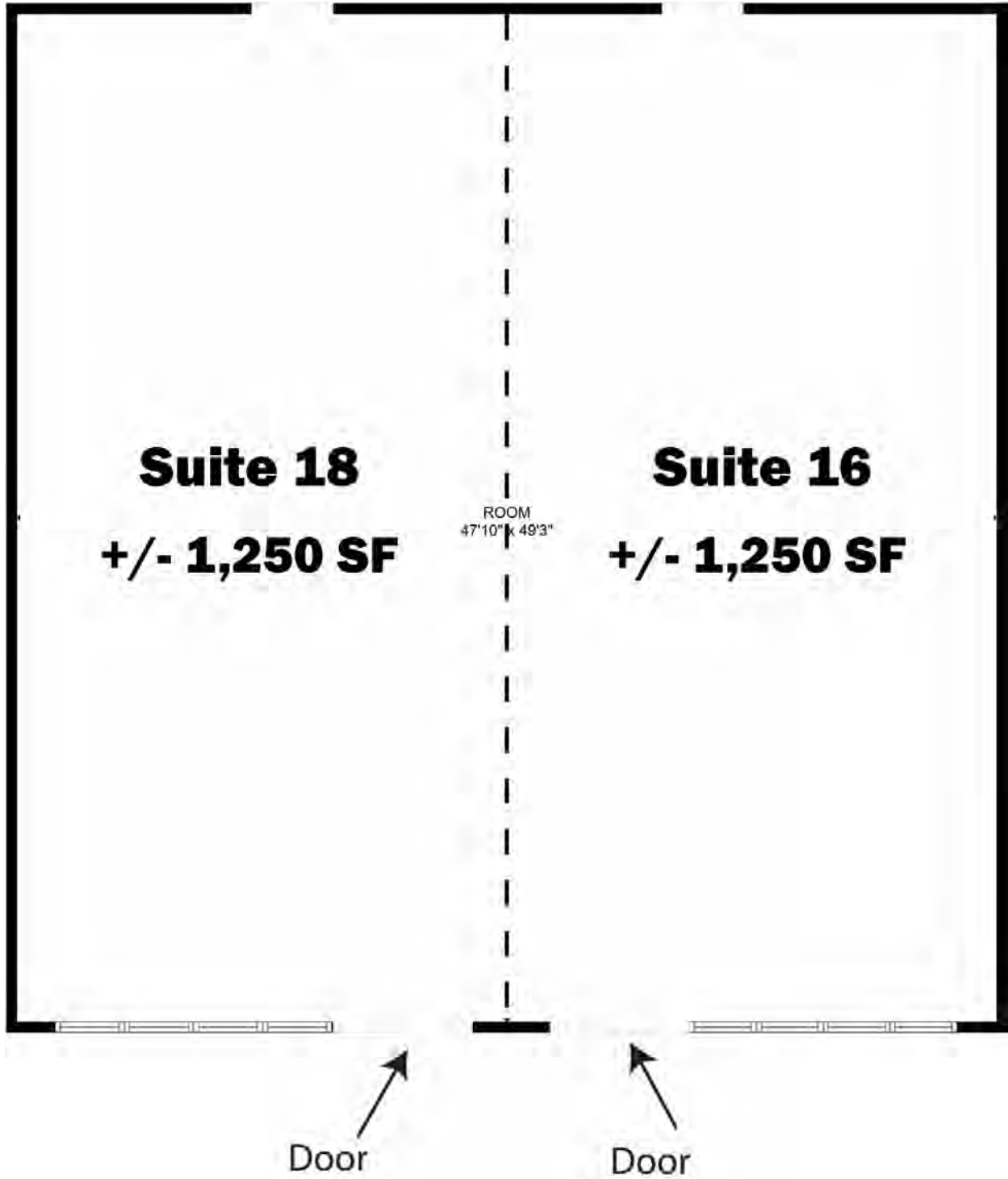
Each Office Independently Owned and Operated salmonsengroup.com

PRIME RETAIL/OFFICE FOR LEASE



2502 SW 14TH SUITE 16 & 18 FLOOR PLAN

2500 & 2502 Southwest 14th Street, Bentonville, AR 72712



We obtained the information above from sources we believe to be reliable. However, we have not verified its accuracy and make no guarantee, warranty or representation about it. It is submitted subject to the possibility of errors, omissions, change of price, rental or other conditions, prior sale, lease or financing, or withdrawal without notice. We include projections, opinions, assumptions or estimates for example only, and they may not represent current or future performance of the property. You and your tax and legal advisors should conduct your own investigation of the property and transaction.

SALMONSEN GROUP
Executive Broker
O: 479.231.1355
C: 479.330.1250
sgrleadmanager@gmail.com
AR #EB00066512

KW COMMERCIAL
201 SW 14th St.
Suite 203
Bentonville, AR 72712

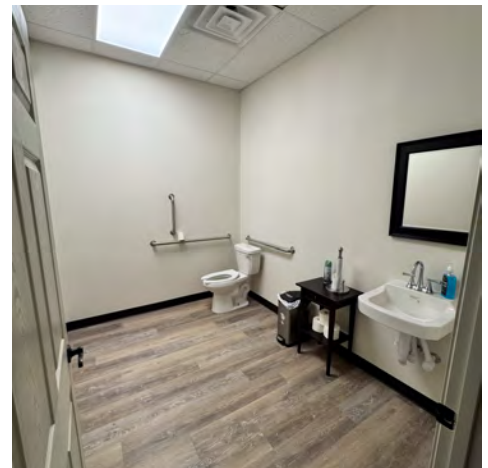
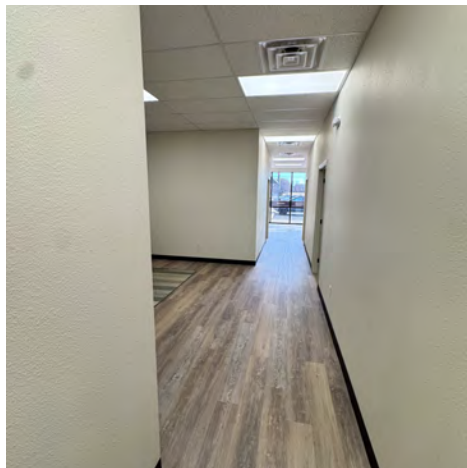
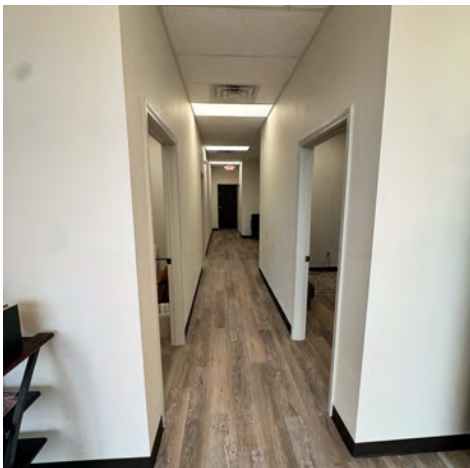
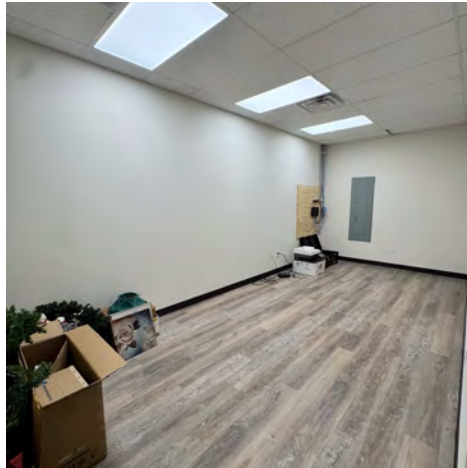
Each Office Independently Owned and Operated salmonsengroup.com

PRIME RETAIL/OFFICE FOR LEASE



2502 SW 14TH SUITE 20 PHOTOS

2500 & 2502 Southwest 14th Street, Bentonville, AR 72712



We obtained the information above from sources we believe to be reliable. However, we have not verified its accuracy and make no guarantee, warranty or representation about it. It is submitted subject to the possibility of errors, omissions, change of price, rental or other conditions, prior sale, lease or financing, or withdrawal without notice. We include projections, opinions, assumptions or estimates for example only, and they may not represent current or future performance of the property. You and your tax and legal advisors should conduct your own investigation of the property and transaction.

SALMONSEN GROUP
Executive Broker
O: 479.231.1355
C: 479.330.1250
sgrleadmanager@gmail.com
AR #EB00066512

KW COMMERCIAL
201 SW 14th St.
Suite 203
Bentonville, AR 72712

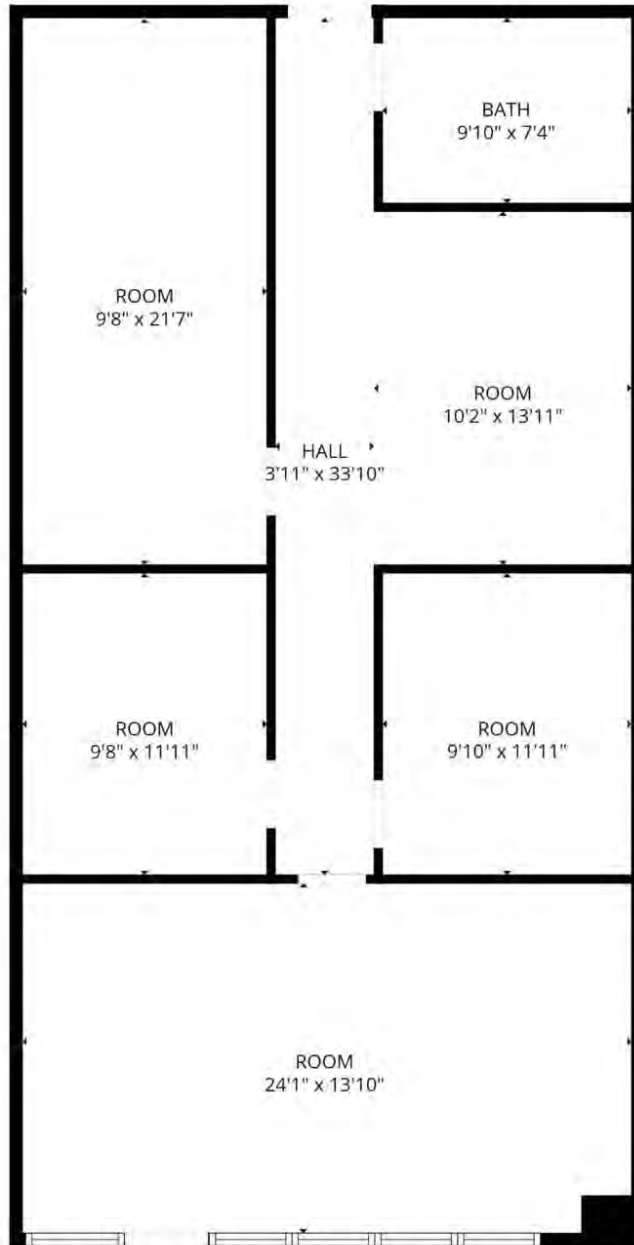
Each Office Independently Owned and Operated salmonsengroup.com

PRIME RETAIL/OFFICE FOR LEASE



2502 SW 14TH SUITE 20 FLOOR PLAN

2500 & 2502 Southwest 14th Street, Bentonville, AR 72712



2502 SW 14TH SUITE 20 +/- 1,250 SF

FLOOR PLAN CREATED BY CUBICASA, A.P.V. MEASUREMENTS DEEMED HIGHLY RELIABLE BUT NOT GUARANTEED

We obtained the information above from sources we believe to be reliable. However, we have not verified its accuracy and make no guarantee, warranty or representation about it. It is submitted subject to the possibility of errors, omissions, change of price, rental or other conditions, prior sale, lease or financing, or withdrawal without notice. We include projections, opinions, assumptions or estimates for example only, and they may not represent current or future performance of the property. You and your tax and legal advisors should conduct your own investigation of the property and transaction.

SALMONSEN GROUP
Executive Broker
O: 479.231.1355
C: 479.330.1250
sgrleadmanager@gmail.com
AR #EB00066512

KW COMMERCIAL
201 SW 14th St.
Suite 203
Bentonville, AR 72712

Each Office Independently Owned and Operated salmonsengroup.com

PRIME RETAIL/OFFICE FOR LEASE



MILESTONE PLAZA

2500 & 2502 Southwest 14th Street, Bentonville, AR 72712



We obtained the information above from sources we believe to be reliable. However, we have not verified its accuracy and make no guarantee, warranty or representation about it. It is submitted subject to the possibility of errors, omissions, change of price, rental or other conditions, prior sale, lease or financing, or withdrawal without notice. We include projections, opinions, assumptions or estimates for example only, and they may not represent current or future performance of the property. You and your tax and legal advisors should conduct your own investigation of the property and transaction.

SALMONSEN GROUP
Executive Broker
O: 479.231.1355
C: 479.330.1250
sgrleadmanager@gmail.com
AR #EB0066512

KW COMMERCIAL
201 SW 14th St.
Suite 203
Bentonville, AR 72712

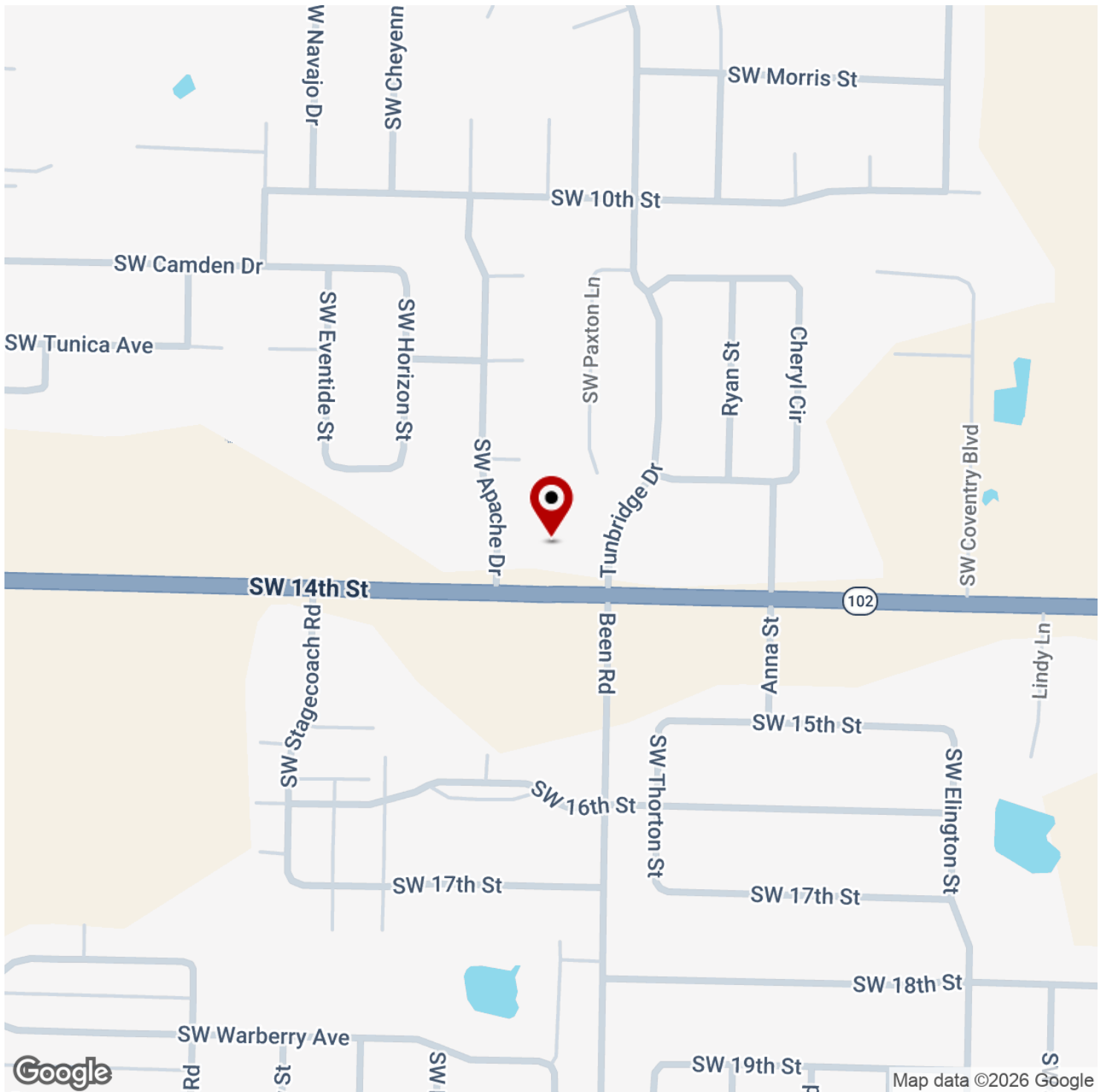
Each Office Independently Owned and Operated salmonsengroup.com

PRIME RETAIL/OFFICE FOR LEASE



MILESTONE PLAZA

2500 & 2502 Southwest 14th Street, Bentonville, AR 72712



We obtained the information above from sources we believe to be reliable. However, we have not verified its accuracy and make no guarantee, warranty or representation about it. It is submitted subject to the possibility of errors, omissions, change of price, rental or other conditions, prior sale, lease or financing, or withdrawal without notice. We include projections, opinions, assumptions or estimates for example only, and they may not represent current or future performance of the property. You and your tax and legal advisors should conduct your own investigation of the property and transaction.

SALMONSEN GROUP
Executive Broker
O: 479.231.1355
C: 479.330.1250
sgrleadmanager@gmail.com
AR #EB00066512

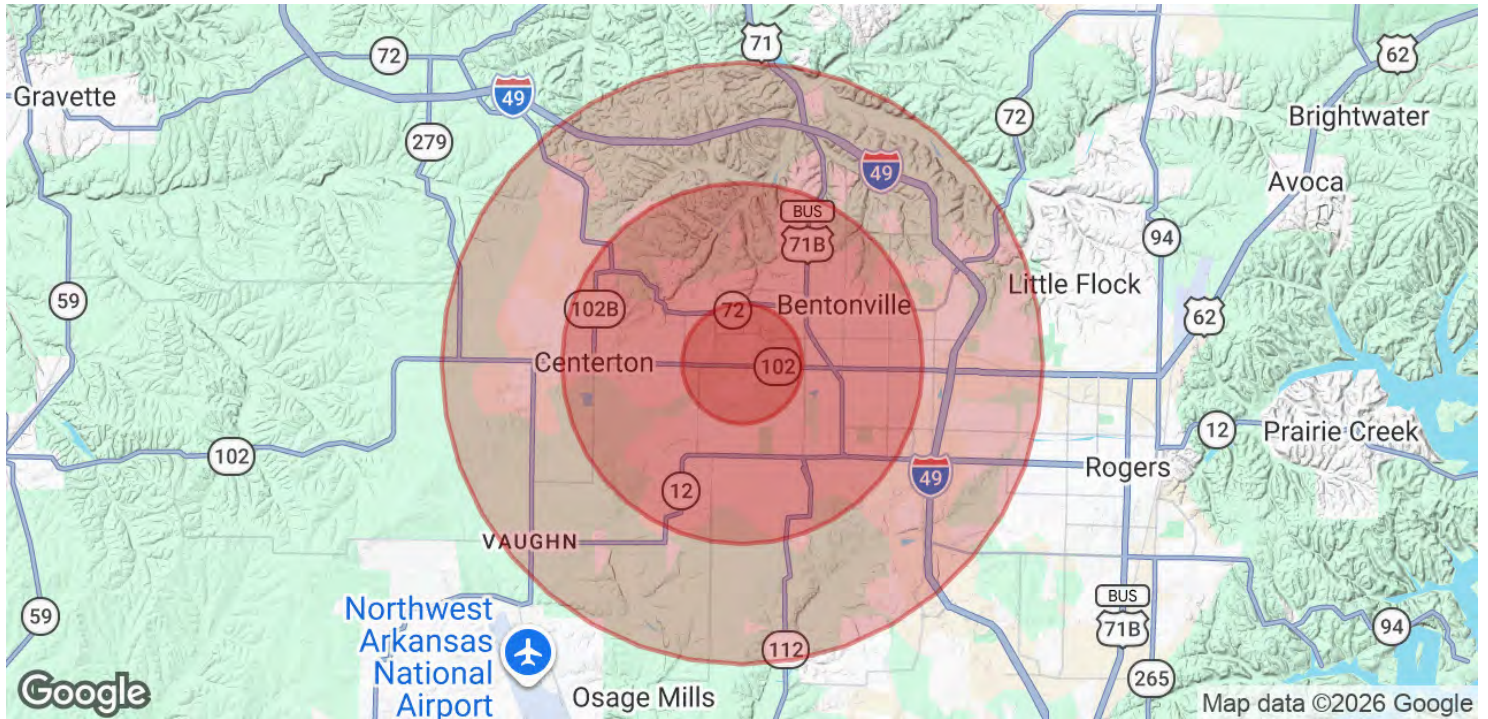
KW COMMERCIAL
201 SW 14th St.
Suite 203
Bentonville, AR 72712

Each Office Independently Owned and Operated salmonsengroup.com



MILESTONE PLAZA

2500 & 2502 Southwest 14th Street, Bentonville, AR 72712



POPULATION	1 MILE	3 MILES	5 MILES
Total Population	10,107	57,727	93,868
Average Age	34	34	35
Average Age (Male)	33	33	34
Average Age (Female)	34	34	36

HOUSEHOLDS & INCOME	1 MILE	3 MILES	5 MILES
Total Households	3,835	21,177	34,560
# of Persons per HH	2.6	2.7	2.7
Average HH Income	\$123,407	\$132,560	\$134,353
Average House Value	\$347,132	\$388,546	\$401,279

2020 American Community Survey (ACS)

We obtained the information above from sources we believe to be reliable. However, we have not verified its accuracy and make no guarantee, warranty or representation about it. It is submitted subject to the possibility of errors, omissions, change of price, rental or other conditions, prior sale, lease or financing, or withdrawal without notice. We include projections, opinions, assumptions or estimates for example only, and they may not represent current or future performance of the property. You and your tax and legal advisors should conduct your own investigation of the property and transaction.

SALMONSEN GROUP
 Executive Broker
 O: 479.231.1355
 C: 479.330.1250
 sgrleadmanager@gmail.com
 AR #EB00066512

KW COMMERCIAL
 201 SW 14th St.
 Suite 203
 Bentonville, AR 72712