

FOR LEASE: ± 5,465 SF FREESTANDING OFFICE

1890 DAWSON STREET

WILMINGTON, NC | NEW HANOVER COUNTY



Cape Fear Country Club

Cargo District



DAWSON ST

SUMMARY

± 5,465 SF available for lease in a two-story, freestanding office building in Wilmington. This move in ready and cost-effective property includes a functional mix of private offices and open work space. The site also provides ample parking for both tenants and visitors.

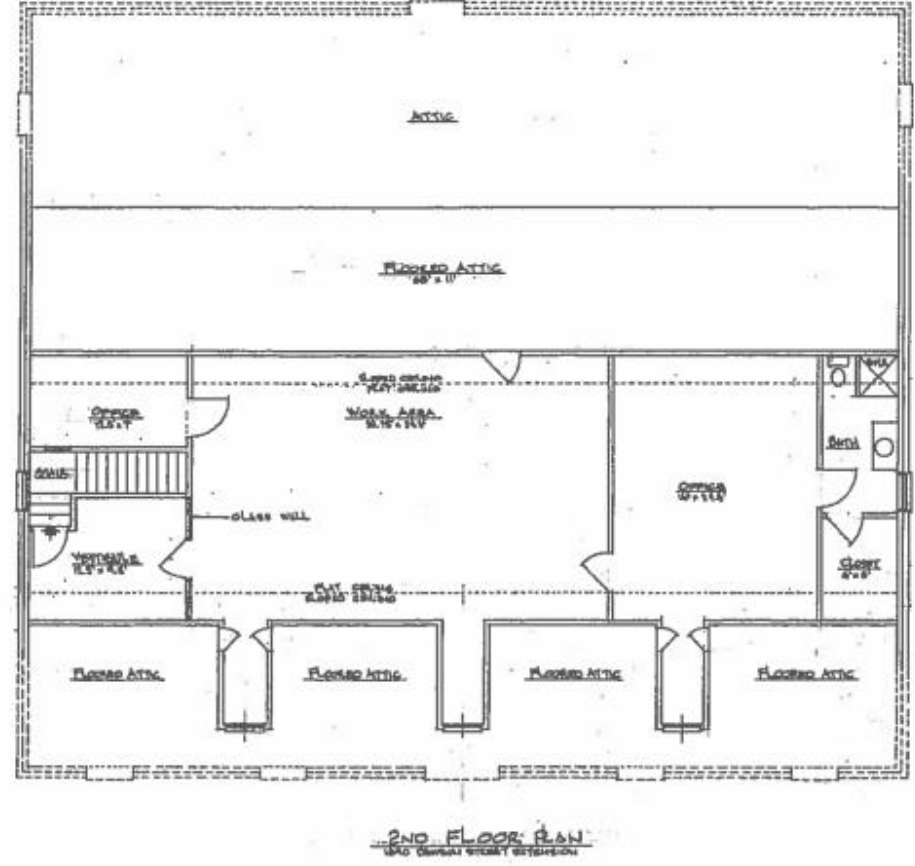
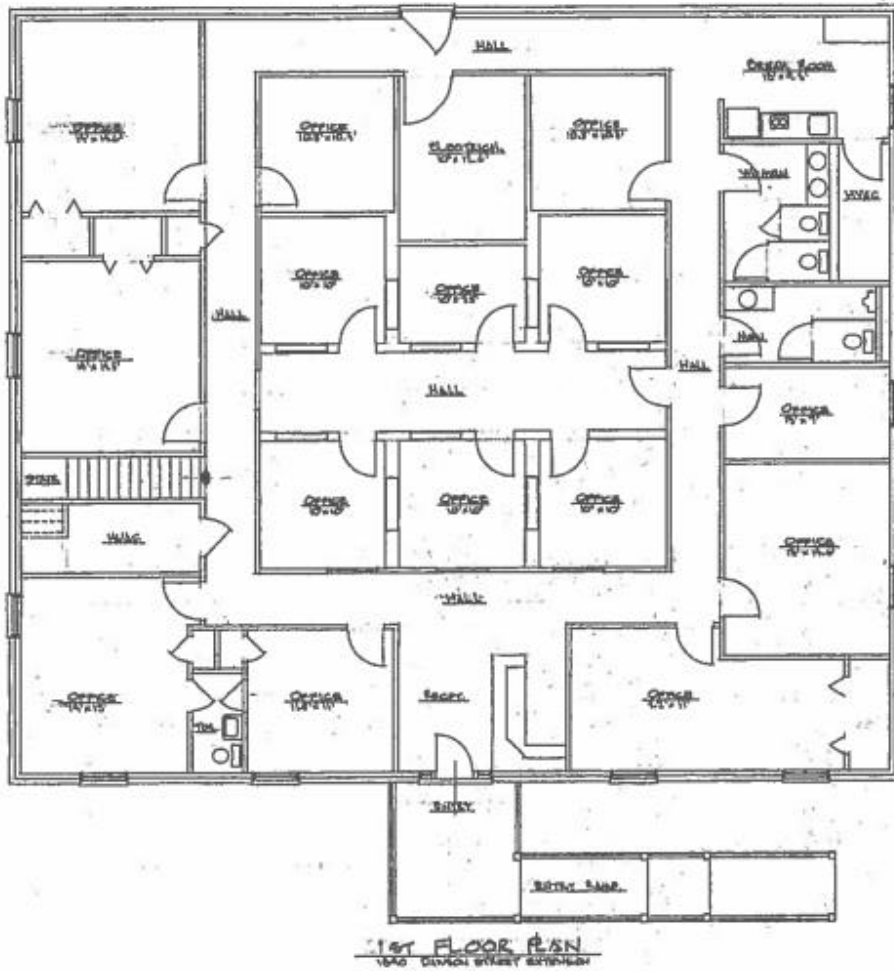
Strategically positioned along Dawson Street between Oleander Drive and Wrightsville Avenue, the property benefits from convenient access and close proximity to Wilmington's historic downtown, as well as a wide range of restaurants, retail, and businesses in the Midtown submarket.

ADDRESS	1890 Dawson Steet Wilmington, NC New Hanover County
AVAILABLE SF	± 5,465 SF (Entire Building)
LEASE RATE	\$7,150.00/month + utilities
AVAILABILITY	Immediately

PHOTOS



FLOORPLAN



APPROXIMATE AND NOT TO SCALE

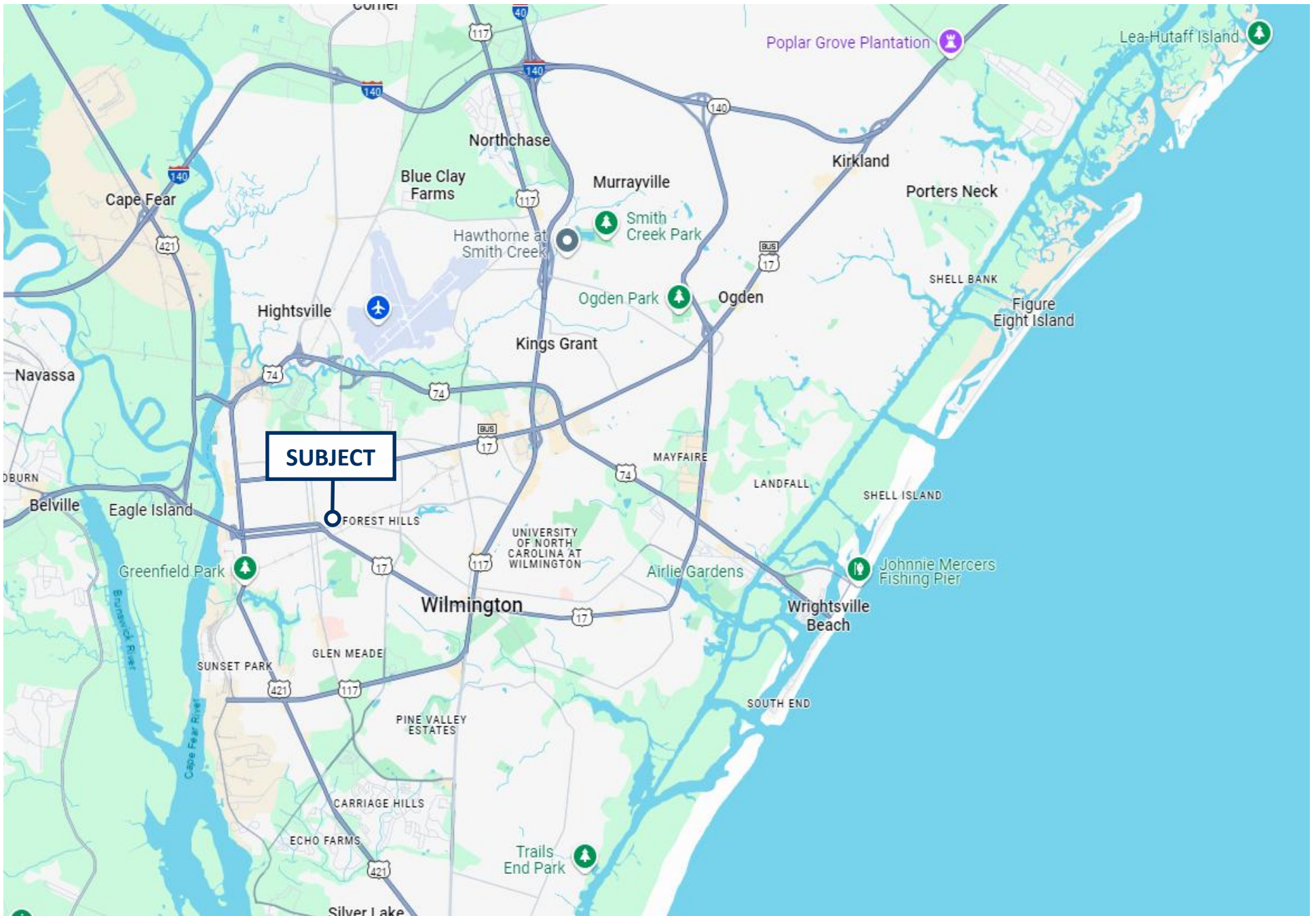
GIS AERIAL



SUBMARKET AERIAL



LOCATION MAP





Cape Fear Commercial

WILL LEONARD, SIOR

Senior Vice President

910.344.1015 direct

910.233.5351 mobile

wleonard@capefearcommercial.com



102 Autumn Hall Drive | Suite 210 | Wilmington, NC 28403

capefearcommercial.com

© 2023 Cape Fear Commercial, LLC. All rights reserved. The information contained in the following Marketing Brochure is proprietary and strictly confidential. It is intended to be reviewed only by the party receiving it from Cape Fear Commercial and should not be made available to any other person or entity without the written consent of Cape Fear Commercial. This Marketing Brochure has been prepared to provide summary, unverified information to prospective purchasers, and to establish only a preliminary level of interest in the Subject property. The information contained herein is not a substitute for a thorough due diligence investigation. Cape Fear Commercial has not made any investigation, and makes no warranty or representation, with respect to the income or expenses for the Subject property, the future projected financial performance of the property, the size and square footage of the property and improvements, the presence or absence of contaminate substances, PCB's or asbestos, the compliance with State and Federal regulations, the physical condition of the improvements thereon, or the financial condition or the business prospects of any tenant's plans or intentions to continue its occupancy of the Subject property. The information contained in this Marketing Brochure has been obtained from sources we believe to be reliable; however, Cape Fear Commercial has not verified, and will not verify, any of the information contained herein, nor has Cape Fear Commercial conducted any investigation regarding these matters and makes no warranty or representation whatsoever regarding the accuracy or completeness of the Information provided. All potential buyers must take appropriate measures to verify all of the information set forth herein.