

# SUITE PLAN

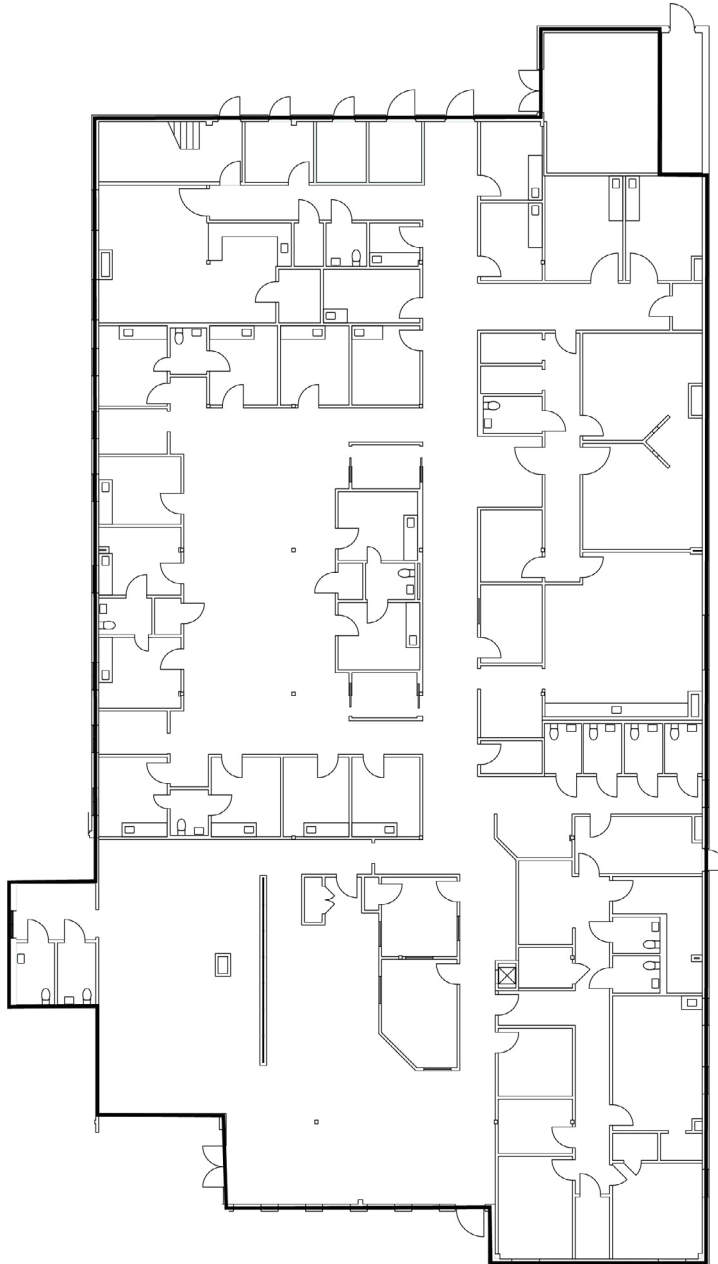
## TEXARKANA MEDICAL OFFICE BUILDING

1902 Moores Lane  
Texarkana, TX 75503

## SUITE 100

14,919 SF

Available April 1, 2026



## For Leasing Information

**Jinny Saad, Regional Leasing Director**  
jinny.saad@Lillibridge.com • 512.961.7336

**Connor Chatlos, Regional Leasing Associate**  
connor.chatlos@Lillibridge.com • 513.255.1111

